

# Department of Forestry and Fire Management

---

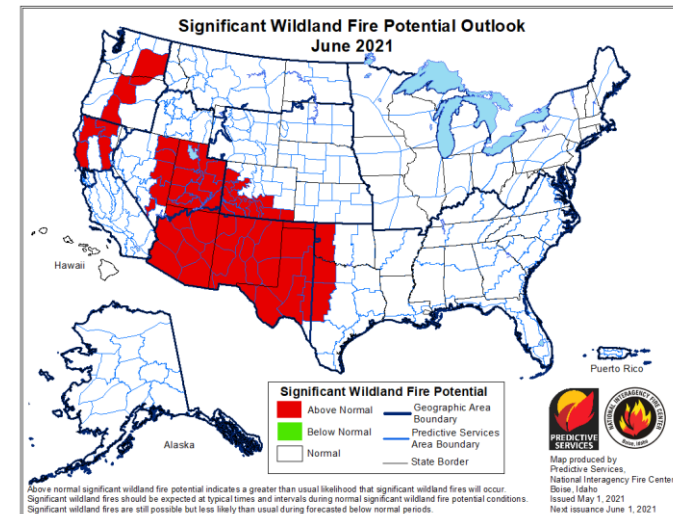
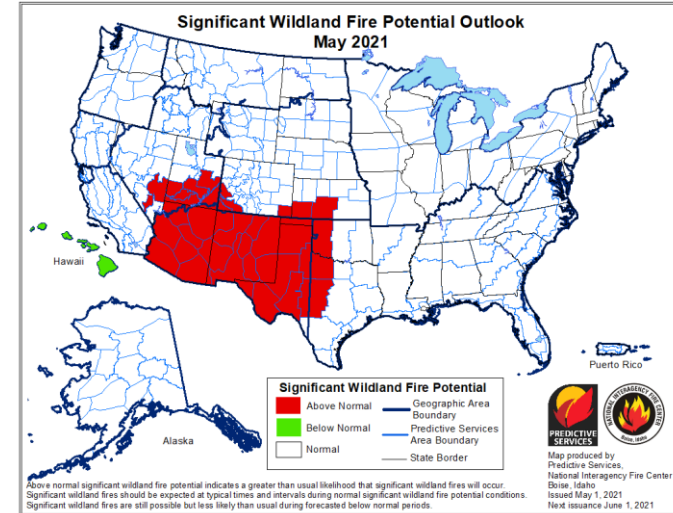


Tiffany Davila  
Public Affairs Officer  
[tdavila@dfm.az.gov](mailto:tdavila@dfm.az.gov)



# 2021 Outlook & Seasonal Factors

- **May** – Early fire activity due to La Nina, lack of precipitation, drought situation, unburned, carryover of fine fuel across Sonoran Desert
- **June** – Fire activity increases statewide (as predicted) exceptional/extreme drought factors
- **July** – Widespread/active monsoon season significantly decreased fire activity and new starts



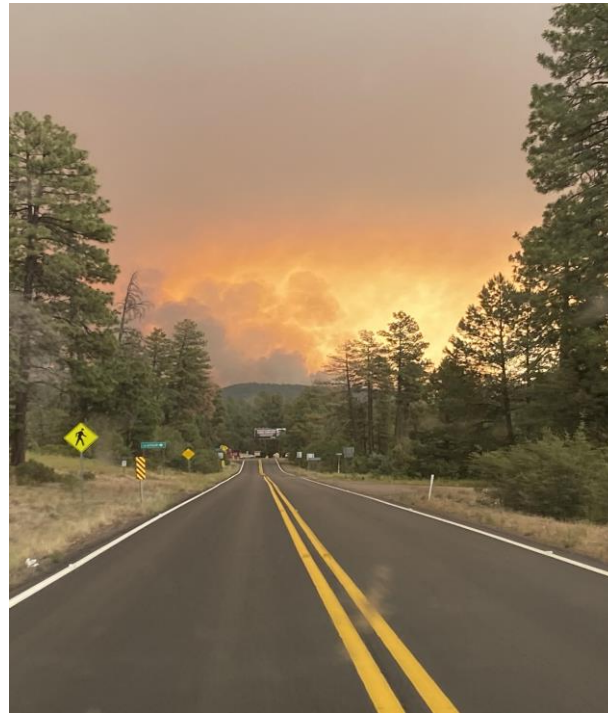
# 2021 Activity

---

**2021:** 1,683 fires:  
532,142 acres

**2020:** 2,324 fires:  
954,836 acres

**2020:** 2,520 fires:  
978,519 acres



Backbone Fire, Pine/Strawberry, June 2021



Copper Canyon Fire, near Globe, May 2021



\*Stats reflect YTD 1/1/2021-11/3/2021 on all land, private, state, federal, and tribal

# 2021 Activity

---

## Telegraph Fire – 180,757 acres

Globe/Miami-area – USFS Tonto



Telegraph Fire, Globe,  
June 2021

## Rafael Fire – 78,065 acres

Perkinsville, E. Hwy 89 – USFS Prescott

## Mescal Fire, 72,250 acres

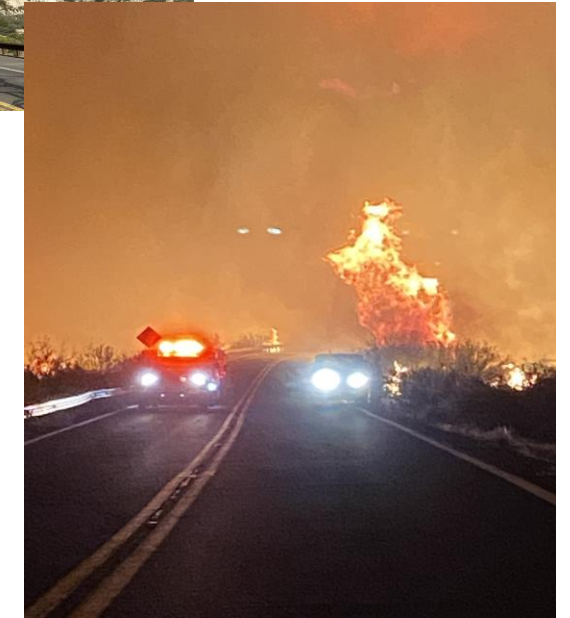
Near Globe – BLM

## Pinnacle Fire – 34,417 acres

Near Safford – USFS Coronado

## Margo Fire – 1,148 acres

Dudleyville, AZ – State



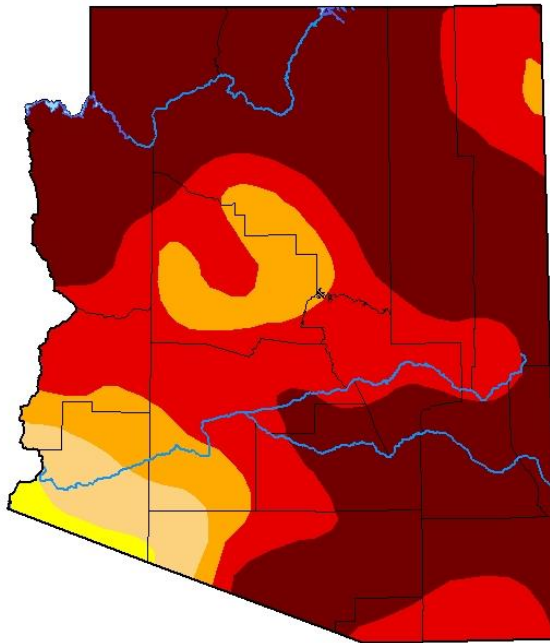
# 2021 Drought Before/After

## U.S. Drought Monitor Arizona

**March 9, 2021**  
(Released Thursday, Mar. 11, 2021)  
Valid 7 a.m. EST

## U.S. Drought Monitor Arizona

**November 2, 2021**  
(Released Thursday, Nov. 4, 2021)  
Valid 8 a.m. EDT



**Intensity:**

- None
- D0 Abnormally Dry
- D1 Moderate Drought
- D2 Severe Drought
- D3 Extreme Drought
- D4 Exceptional Drought

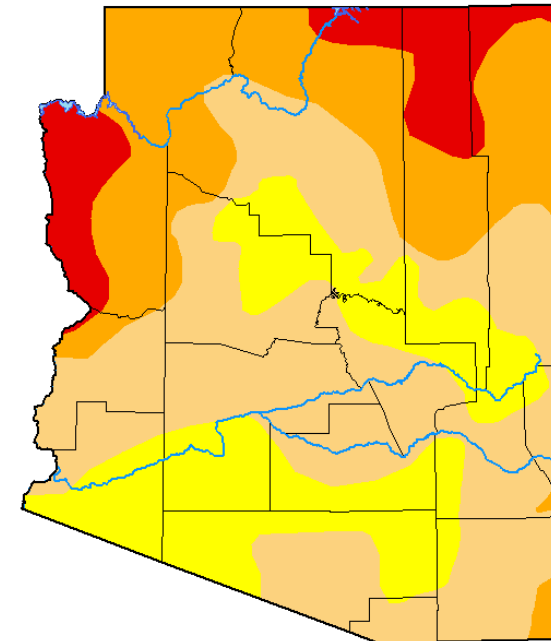
The Drought Monitor focuses on broad-scale conditions. Local conditions may vary. For more information on the Drought Monitor, go to <https://droughtmonitor.unl.edu/About.aspx>

**Author:**

Brian Fuchs  
National Drought Mitigation Center



[droughtmonitor.unl.edu](https://droughtmonitor.unl.edu)



**Intensity:**

- None
- D0 Abnormally Dry
- D1 Moderate Drought
- D2 Severe Drought
- D3 Extreme Drought
- D4 Exceptional Drought

The Drought Monitor focuses on broad-scale conditions. Local conditions may vary. For more information on the Drought Monitor, go to <https://droughtmonitor.unl.edu/About.aspx>

**Author:**

Adam Hartman  
NOAA/NWS/NCEP/CPC



[droughtmonitor.unl.edu](https://droughtmonitor.unl.edu)



# House Bill 2001

---

- \$36 million funding for post-fire flooding mitigation
- \$25 million Healthy Forest Initiative
- \$19 million wildfire suppression
- \$10 million DFFM capital expenditures and equipment for fire suppression
- \$10 million for emergency repair to public and private infrastructure damaged by wildfires or wildfire suppression efforts



# House Bill 2001

---

- Of the \$36 million for post-fire flooding mitigation - **\$8 million to Gila County**
- Money used for sandbagging machines, sandbags/sand, barricades, heavy equipment, flood warning gauge sensors
- \$335k approved for assistance under emergency infrastructure portion of bill. Money to help with infrastructure repair due to damage from wildfires or wildfire suppression activities
- Under \$25 million Healthy Forest Initiative – 31 projects active/planned throughout the state. Nine of which are prescribed burns



# 2022 Outlook – Now What?

---

- La Nina Forecast for Winter 2021/Spring 2022
- Overgrowth of grasses from monsoon rainfall likely to create abundance of dry grass come spring
- Warmer-than-normal temperatures and lack of precipitation due to La Nina could lead to an early start to fire activity. Fine vegetation fuel-type; grasses and brush will dry out faster. Potential for early fire activity across Sonoran Desert were this fuel type lives



# Thank You

---



---

[DFFM.az.gov](http://DFFM.az.gov)