

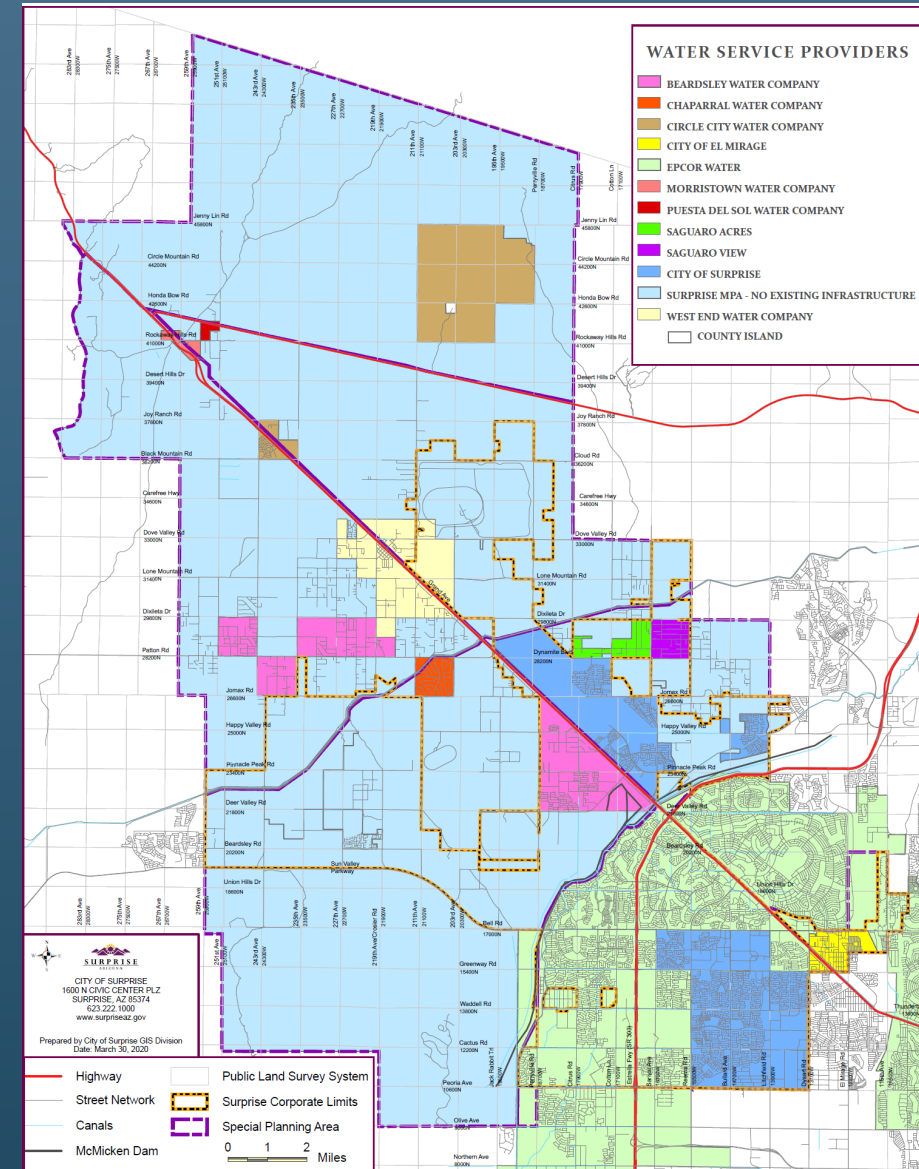


***City of Surprise
Xeriscape Demonstration Garden***

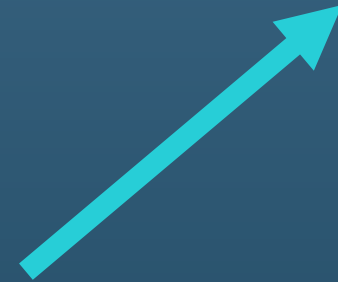
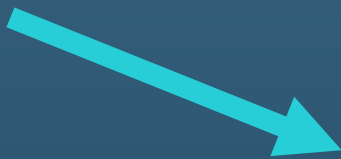
City of Surprise

- Master planning area = 302 square miles
- Current incorporated land = 108 square miles
- 12 water service providers
- 6 planning areas
- 98% SFR

	2021
Accounts	20,394
Delivered	9,088 af
Demand/account	0.481 af/acct.
SFR unit demand	0.285 af/acct.
IRR unit demand*	6.21 af/acct.
Designation Volume	24,450 af



Designing the Xeriscape Garden



What's in our garden?

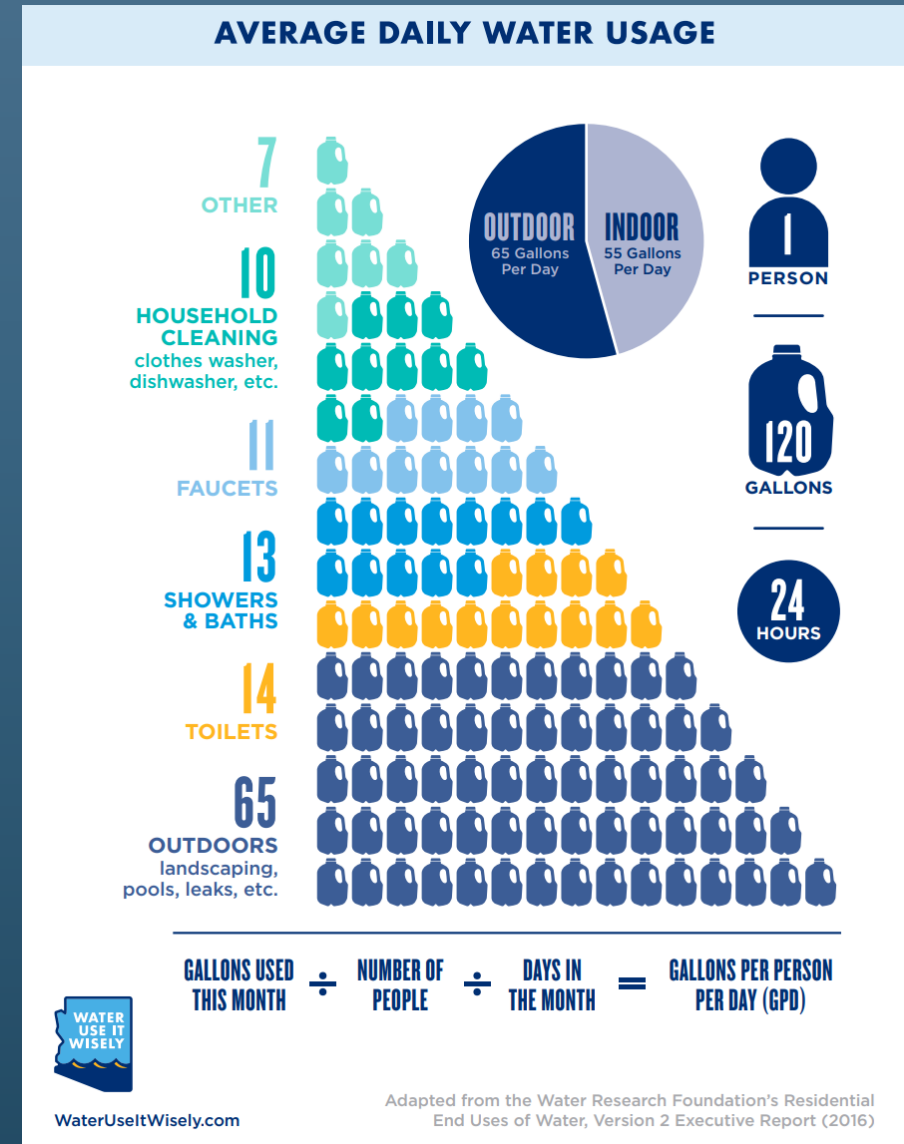
- 63 plant species
- 51 trees
- Concrete and DG pathways
- Seating areas
- Amphitheater
- Student/community artwork
- Interpretive signage
- 100% reclaimed water



Why Have Demonstration Gardens?

Water Management Tool

- In Surprise ~60% of all potable water is used outdoors
- Proper watering & leak detection is “lowest hanging fruit” of water conservation
- Conversion to xeric landscaping results in approximately 58 gallons of water saved annually per square foot*



*Sovocool, K.A., Morgan, M. and Bennett, D. (2006), An in-depth investigation of Xeriscape as a water conservation measure. Journal - American Water Works Association, 98: 82-93. <https://doi.org/10.1002/j.1551-8833.2006.tb07590.x>

Master Gardener Partnership

The Surprise University of Arizona Master Gardener Office is a space dedicated to the joint partnership between the West Valley Master Gardeners and the City of Surprise Water Conservation Program



THE UNIVERSITY OF ARIZONA

Cooperative Extension

Maricopa County - Master Gardeners

City of Surprise Xeriscape Demonstration Garden

The Seven Principles of Xeriscape

PLANNING & DESIGN

Create a plan that considers cost, function and both water and energy efficiency (by placing plants to shade your home).

SOIL IMPROVEMENT

Improve your soil health and it will benefit your plants and save water. Soil can also be graded to collect rainwater for your plants.

PRACTICAL TURF AREAS

Consider forgoing or minimizing the amount of grass in your landscape. Grass lawns use a lot of water and require specialized maintenance.

EFFICIENT IRRIGATION

Install a properly designed system that will deliver the right amount of water at the right time, and don't forget to collect rainwater.

MULCH

Apply organic mulches to: reduce evaporation from the soil surface, keep soil temperatures cooler in summer, and help prevent weed growth.

LOW- WATER- USE PLANTS

Select from hundreds of plants to provide many functions for your landscape, from attracting birds and butterflies to screening unsightly areas.

APPROPRIATE MAINTENANCE

All landscapes need some care. Improper pruning and fertilizing can actually cause your landscape to use more water.

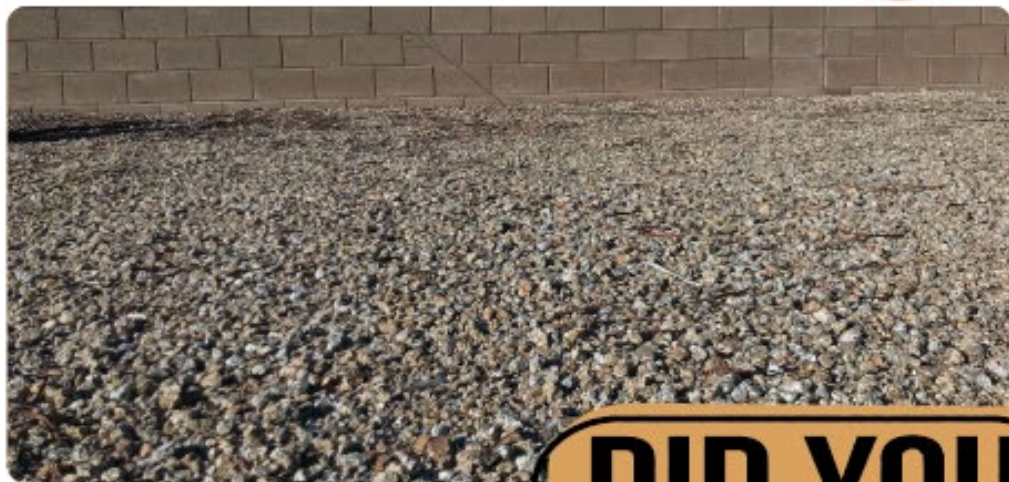
Scan this QR code for more information on how you can help conserve water.



XERISCAPE



ZERO-SCAPE



130

The average City of Surprise resident uses more than 130 gallons of water every day! Approximately 70% of that use is outdoors. Converting even a portion of landscape to low-water-use plants can save water and money!

DID YOU KNOW?

City of Surprise Xeriscape Demonstration Garden

- Themes
 - Low Desert
 - Native Compatible
 - Sensory
 - Year Round Color
- Interpretive Panels
 - Urban forests
 - Proper watering



Displays plants that offer seasonal color and add decoration to any garden.



Showcases the brilliant blooms that succeed in low desert gardens, chosen specifically for their ecosystem value and ability to delight the human senses.



Plants that perform like our native species and tolerate the same conditions.



Highlights the diversity of the Sonoran Desert.

Education Goals of Garden

Passive education

- Flyers & brochures for kiosk
- Informational sheets for bulletin board (plant or animal of the month)
- Self-guided tour pamphlet

Active education

- Water Education Center classes
- Garden tours
- Classroom tours



QUESTIONS???

Amanda Rothermal
Water Resource Analyst
623-222-7035
amanda.rothermal@surpriseaz.gov

Amy Peterson
Water Resource Analyst
623-222-7033
amy.peterson@surpriseaz.gov