

Welcome

The meeting will begin shortly, in the meantime please,

- Keep your phone muted during the meeting.
- If you have a question/comment type it in the chat box and it will be read and addressed during the Call to Public.
- If you experience any technical difficulties, please contact ADWR Help Desk at 602-771-8444 or tickets@azwater.gov



Meeting Agenda

1. Call to Order – Welcome & Introductions – *Chair*
2. Meeting Logistics – *Kennedy Shepard, ADWR*
3. Colorado River Update – *James Heffner, ADWR*
James will provide an update on Colorado River hydrology.
4. Arizona Water Bank Authority Preliminary 2023 Plan of Operation – *Virginia O’Connell, AWBA*
Virginia will present the AWBA 2023 Preliminary Plan of Operation.
5. Groundwater Withdrawal Fee Recommendation & WMAP
 - a. Review withdrawal fee rates and money collected in past five years, WMAP projects, and remaining balance – *Melissa Sikes, ADWR*
 - b. Discuss and recommend to ADWR Director groundwater withdrawal fee rates for reporting year 2022 - *Council*
6. WMAP Project Update and Funding Renewal Request – *Renewal of Contract #2021-3144: Jennifer Salcido, Natural Resources Education Center, Eats Maricopa Natural Resource Conservation District.*
The council will hear an update and discuss a request for a renewal of WMAP funding. Based upon such discussion, the Council may vote to make a recommendation to the director with respect to the proposed action.
7. Overdraft and the Management Goal in the Pinal AMA – *Amanda Long, ADWR*
Amanda will present on overdraft in the Pinal AMA using the method described in a recently published report assessing each AMA’s progress towards its management goal.
8. Statewide Planning Updates – *John Riggins, ADWR*
9. Call to the Council – *Council*
10. Call to the Public – *Chair*
11. Adjournment - *Chair*



Pinal AMA GUAC

September 19, 2022



Meeting Agenda

1. Call to Order – Welcome & Introductions – *Chair*
2. Meeting Logistics – *Kennedy Shepard, ADWR*
3. Colorado River Update – *James Heffner, ADWR*
James will provide an update on Colorado River hydrology.
4. Arizona Water Bank Authority Preliminary 2023 Plan of Operation – *Virginia O’Connell, AWBA*
Virginia will present the AWBA 2023 Preliminary Plan of Operation.
5. Groundwater Withdrawal Fee Recommendation & WMAP
 - a. Review withdrawal fee rates and money collected in past five years, WMAP projects, and remaining balance – *Melissa Sikes, ADWR*
 - b. Discuss and recommend to ADWR Director groundwater withdrawal fee rates for reporting year 2022 - *Council*
6. WMAP Project Update and Funding Renewal Request – *Renewal of Contract #2021-3144: Jennifer Salcido, Natural Resources Education Center, Eats Maricopa Natural Resource Conservation District.*
The council will hear an update and discuss a request for a renewal of WMAP funding. Based upon such discussion, the Council may vote to make a recommendation to the director with respect to the proposed action.
7. Overdraft and the Management Goal in the Pinal AMA – *Amanda Long, ADWR*
Amanda will present on overdraft in the Pinal AMA using the method described in a recently published report assessing each AMA’s progress towards its management goal.
8. Statewide Planning Updates – *John Riggins, ADWR*
9. Call to the Council – *Council*
10. Call to the Public – *Chair*
11. Adjournment - *Chair*



Meeting Logistics

- For guests joining online:
 - Please keep your phone muted during the meeting.
 - Type your question/comment in the chat box and it will be read and addressed during the Call to Public
- During the Call to Public people will have the option to speak to the Council.
- This meeting is being recording and will be posted to ADWR's website.
- With any technical difficulties please contact ADWR Help Desk at 602-771-8444 or tickets@azwater.gov



Meeting Agenda

1. Call to Order – Welcome & Introductions – *Chair*
2. Meeting Logistics – *Kennedy Shepard, ADWR*
3. Colorado River Update – *James Heffner, ADWR*
James will provide an update on Colorado River hydrology.
4. Arizona Water Bank Authority Preliminary 2023 Plan of Operation – *Virginia O’Connell, AWBA*
Virginia will present the AWBA 2023 Preliminary Plan of Operation.
5. Groundwater Withdrawal Fee Recommendation & WMAP
 - a. Review withdrawal fee rates and money collected in past five years, WMAP projects, and remaining balance – *Melissa Sikes, ADWR*
 - b. Discuss and recommend to ADWR Director groundwater withdrawal fee rates for reporting year 2022 - *Council*
6. WMAP Project Update and Funding Renewal Request – *Renewal of Contract #2021-3144: Jennifer Salcido, Natural Resources Education Center, Eats Maricopa Natural Resource Conservation District.*
The council will hear an update and discuss a request for a renewal of WMAP funding. Based upon such discussion, the Council may vote to make a recommendation to the director with respect to the proposed action.
7. Overdraft and the Management Goal in the Pinal AMA – *Amanda Long, ADWR*
Amanda will present on overdraft in the Pinal AMA using the method described in a recently published report assessing each AMA’s progress towards its management goal.
8. Statewide Planning Updates – *John Riggins, ADWR*
9. Call to the Council – *Council*
10. Call to the Public – *Chair*
11. Adjournment - *Chair*



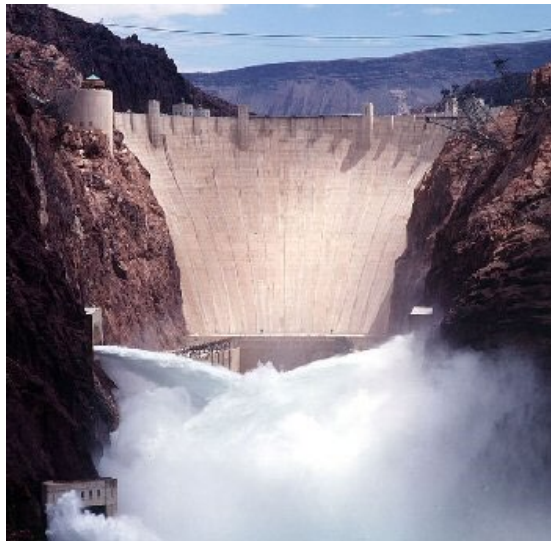
COLORADO RIVER BASIN STATUS UPDATE

Presented to:

Pinal AMA

Groundwater Users Advisory Council

September 19, 2022



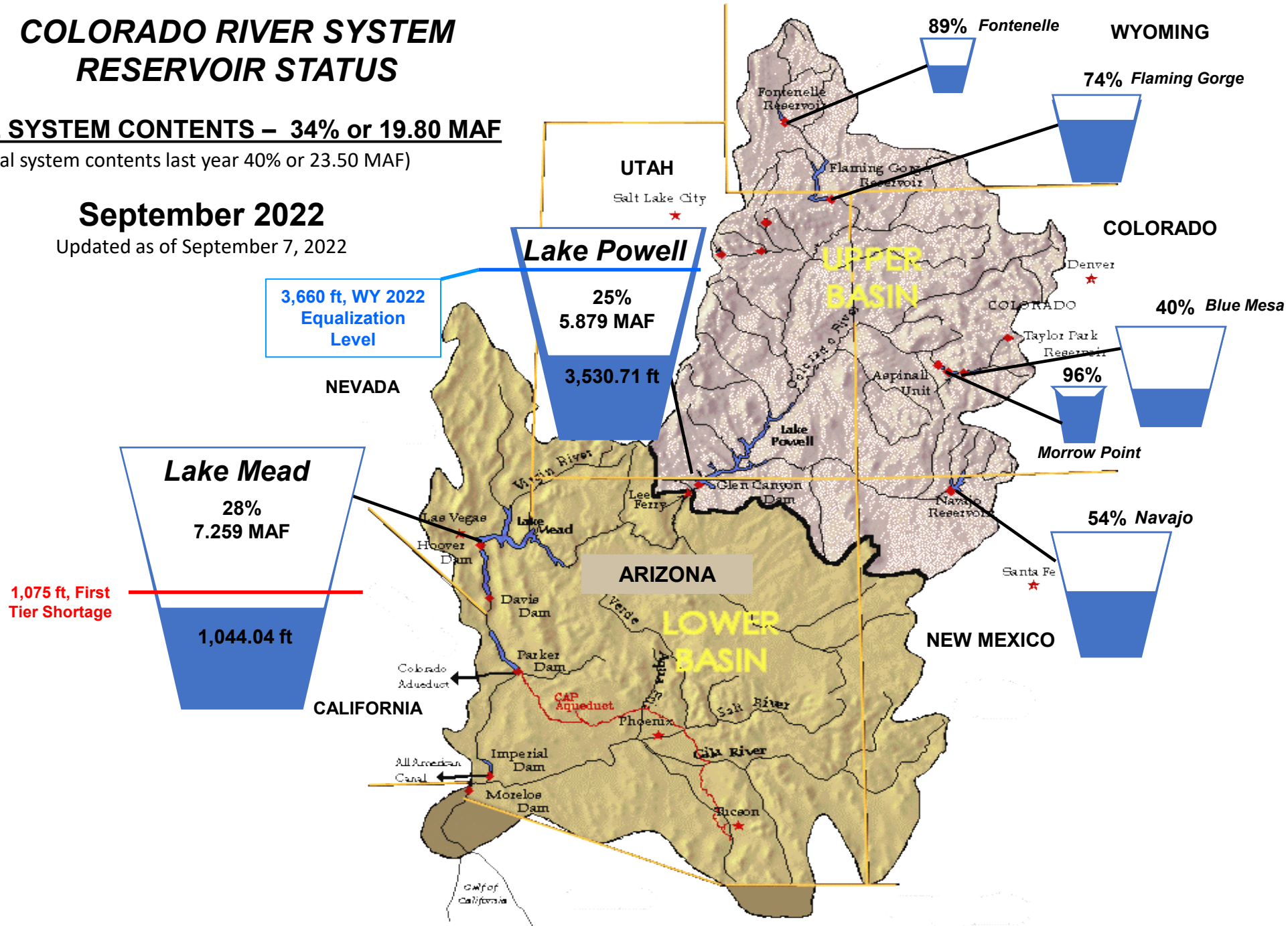
COLORADO RIVER SYSTEM RESERVOIR STATUS

TOTAL SYSTEM CONTENTS – 34% or 19.80 MAF

(Total system contents last year 40% or 23.50 MAF)

September 2022

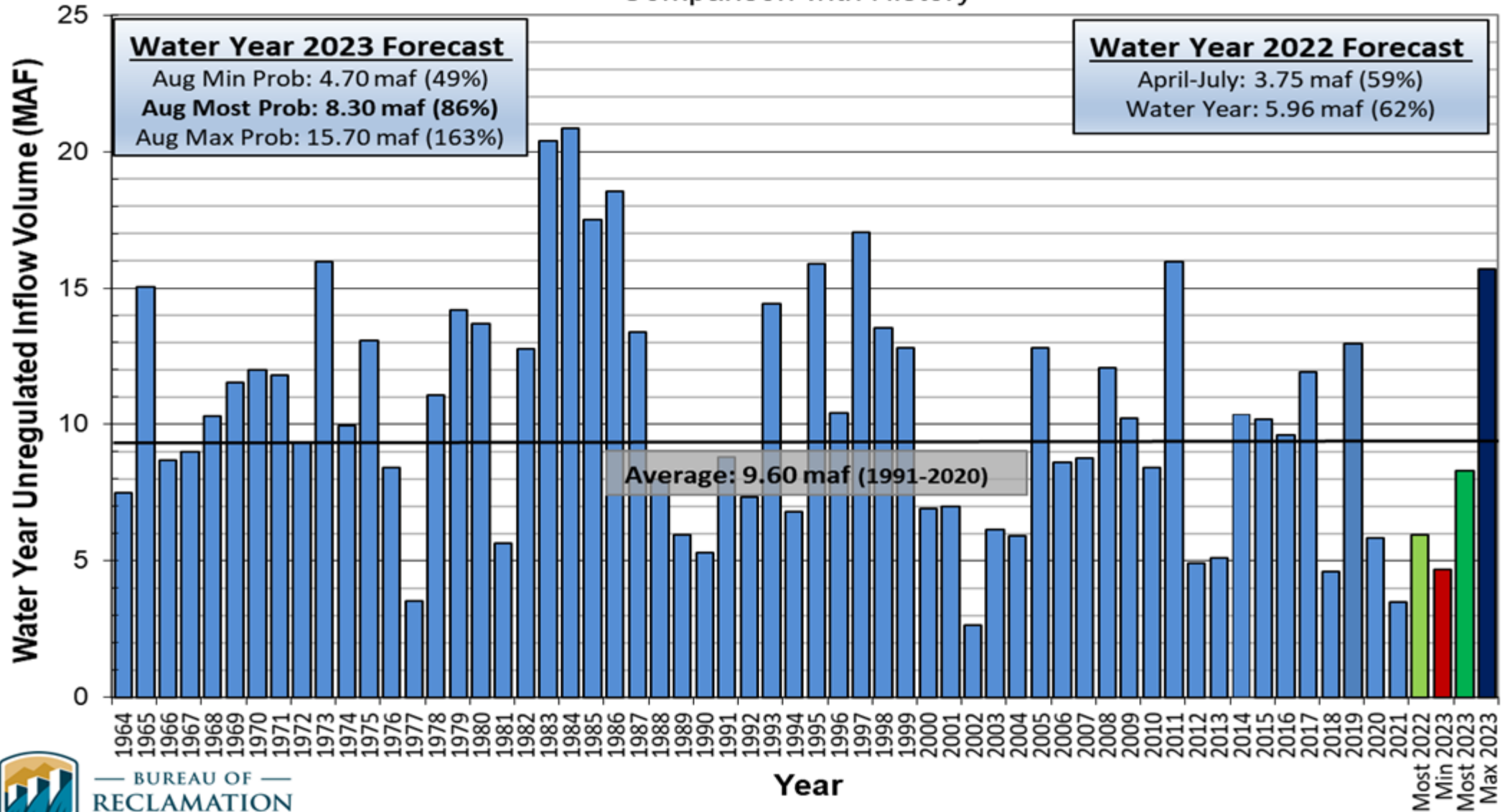
Updated as of September 7, 2022



Lake Powell Unregulated Inflow

Water Year 2022 and 2023 Forecast *(issued August 2)*

Comparison with History



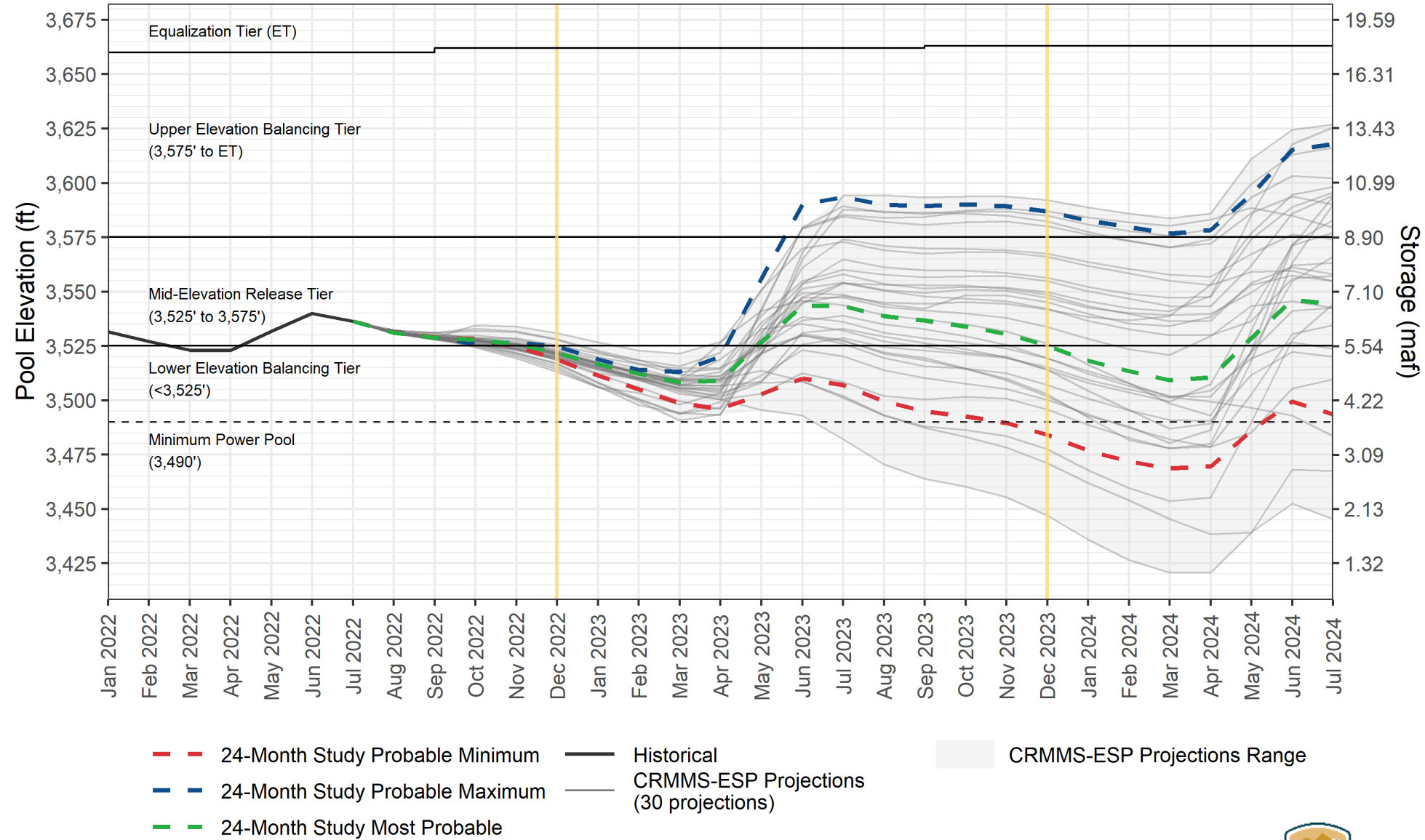
BUREAU OF RECLAMATION

Year

Most 2022
 Min 2023
 Most 2023
 Max 2023

Lake Powell End-of-Month Elevations¹

CRMMS Projections from August 2022



End of CY 2022 Projections

Most Probable:
3,521.84 feet (23% full)

Probable Min to Max Range:
3,518.75 to 3,524.72 feet

End of CY 2023 Projections

Most Probable:
3,525.07 feet (24% full)

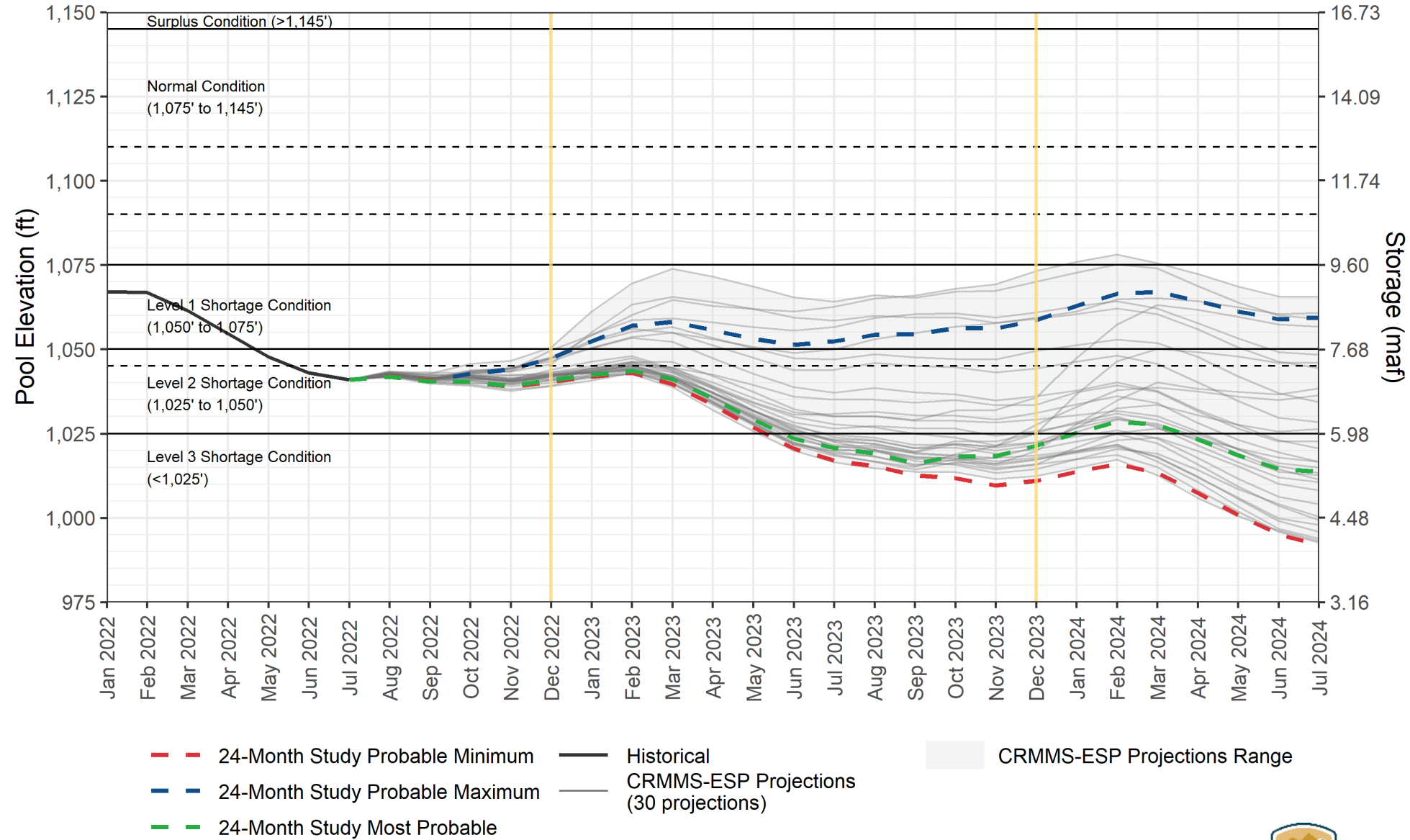
Probable Min to Max Range:
3,484.06 to 3,586.78 feet

¹ Projected Lake Powell end-of-month physical elevations from the latest CRMMS-ESP and 24-Month Study inflow scenarios.



Lake Mead End-of-Month Elevations¹

CRMMS Projections from August 2022



End of CY 2022 Projections

Most Probable:
1,040.78 feet (27% full)

Probable Min to Max Range:
1,040.25 to 1,047.39 feet

End of CY 2023 Projections

Most Probable:
1,021.39 feet (22% full)

Probable Min to Max Range:
1,010.95 to 1,058.63 feet

¹ Projected Lake Mead end-of-month physical elevations from the latest CRMMS-ESP and 24-Month Study inflow scenarios.



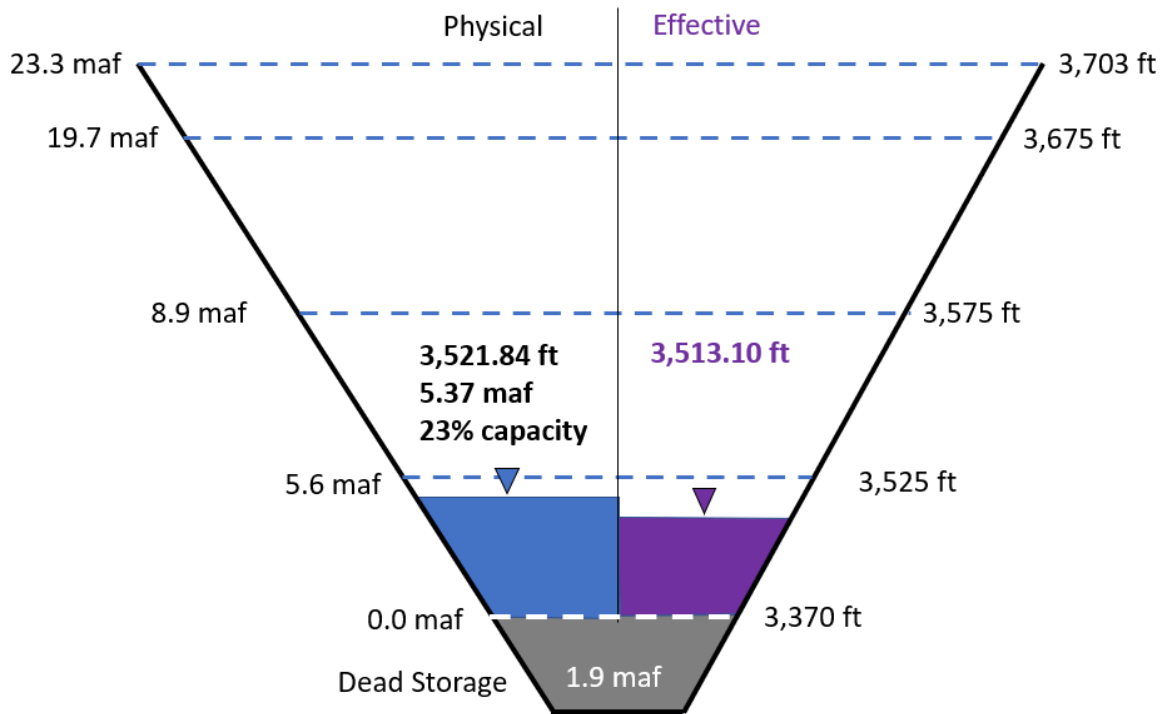
Arizona 500+ Plan Activity (August 24-Month Study)	2021	2022 (Projected)	2023 (Projected)
CAP ICS delivery offset	6,147	19,604	-18,400
Gila River Indian Community System Conservation	40,000	50,937	0
Gila River Indian Community ICS Creation	0	78,565	0
Colorado River Indian Tribes System Conservation	4,685	4,685	0
CAWCD System Conservation	0	35,506	0
YMIDD System Conservation	0	8,544	13,670
MVIDD System Conservation	0	9,592	9,592
Total Arizona 500+ Plan Activity	50,832	207,433	4,862

Additional 500+ Plan Activity	2021	2022 (Projected)	2023 (Projected)
MWD ICS delivery offset and/or creation	58,134	-4,578	-161,978
PVID System Conservation	12,305	50,800	58,000
SNWA ICS creation	12,832	15,000	15,000
Total CA and NV 500+ Plan	83,271	61,222	-88,978
Total LB 500+ Plan Activity - Modeled	134,103	268,655	-84,116
Total LB 500+ Plan Activity - Modeled (Cumulative)		402,758	318,642

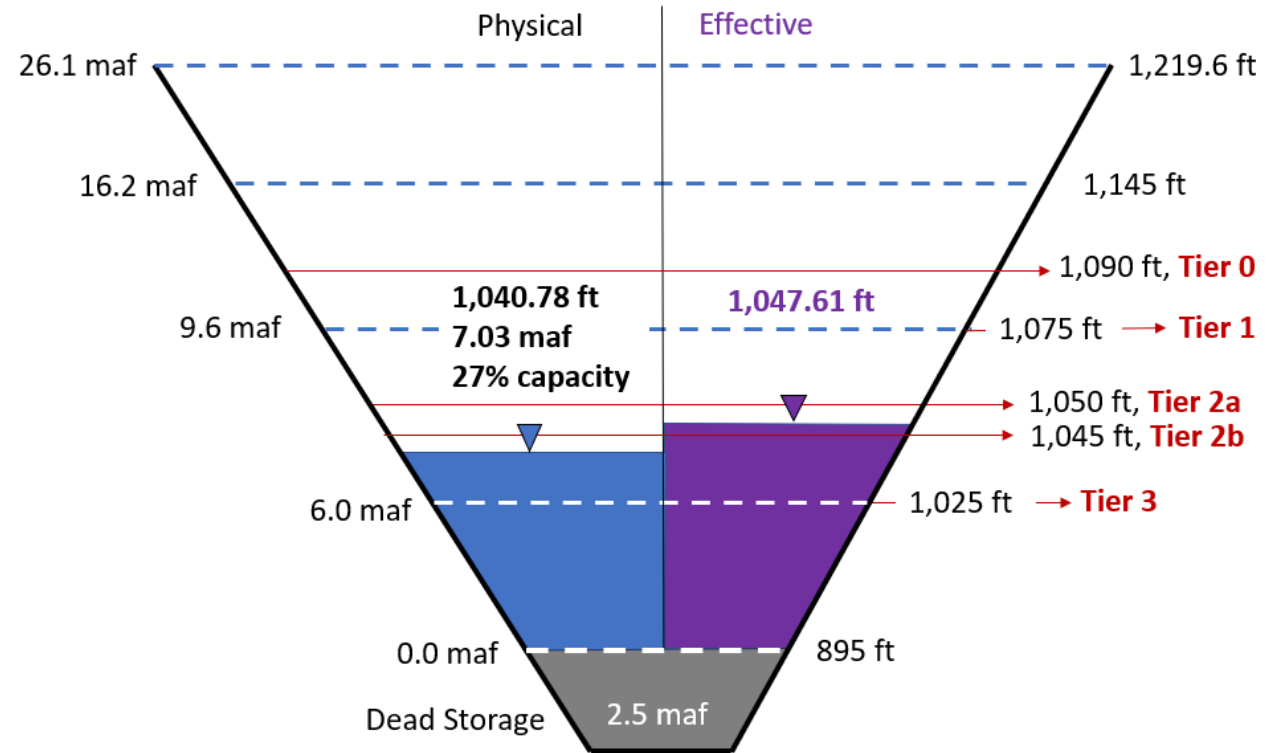
End of Calendar Year 2022 Projections

August 2022 24-Month Study Most Probable Inflow Scenario

Lake Powell



Lake Mead



Lower Colorado River Tier 2a Shortage in 2023

On Tuesday, August 16th, Camille Touton, Commissioner of the Bureau of Reclamation, announced Lake Mead will operate in a Tier 2a Shortage Condition in 2023. Tier 2a reductions include:

- Arizona: 592,000 acre-feet, which is approximately 21% of the state's annual apportionment
- Nevada: 25,000 acre-feet, which is 8% of the state's annual apportionment
- Mexico: 104,000 acre-feet, which is approximately 7% of the country's annual allotment
- There is no required water savings contribution for California in 2023 under this operating condition.

2007 Interim Guidelines, Minute 323, Lower Basin Drought Contingency Plan, and Binational Water Scarcity Contingency Plan

Total Volumes (kaf)

Tier 1 →

Tier 2a →

Tier 2b →

Tier 2c →

Tier 2d →

Tier 2e →

Tier 3 →

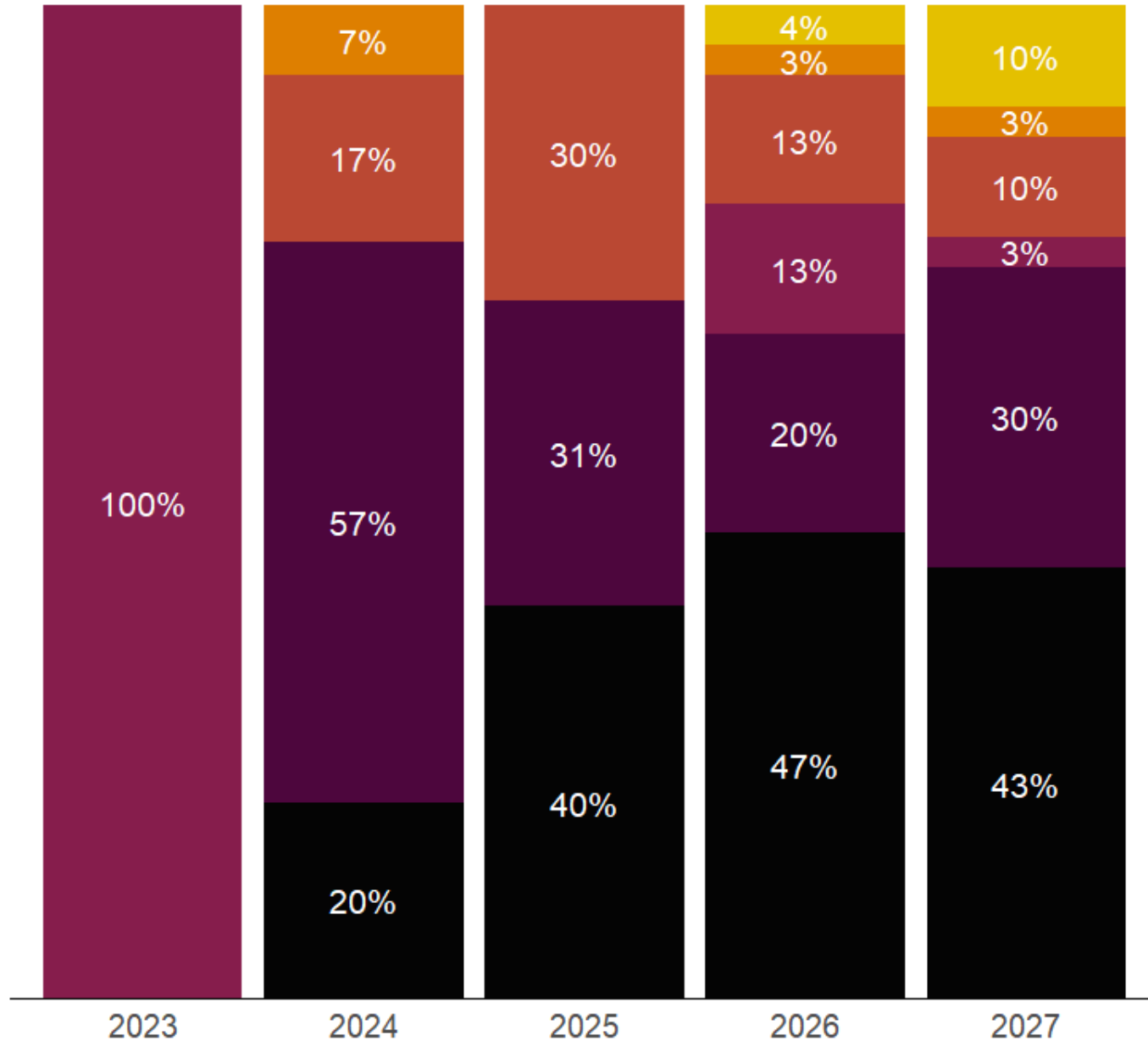
Lake Mead Elevation (feet msl)	2007 Interim Guidelines Shortages		Minute 323 Delivery Reductions	Total Combined Reductions	DCP Water Savings Contributions			Binational Water Scarcity Contingency Plan Savings	Combined Volumes by Country <i>US: (2007 Interim Guidelines Shortages + DCP Contributions)</i> <i>Mexico: (Minute 323 Delivery Reductions + Binational Water Scarcity Contingency Plan Savings)</i>					Total Combined Volumes
	AZ	NV	Mexico	<i>Lower Basin States + Mexico</i>	AZ	NV	CA	Mexico	AZ Total	NV Total	CA Total	<i>Lower Basin States Total</i>	<i>Mexico Total</i>	<i>Lower Basin States + Mexico</i>
1,090 - 1,075	0	0	0	0	192	8	0	41	192	8	0	200	41	241
1,075 - 1050	320	13	50	383	192	8	0	30	512	21	0	533	80	613
1,050 - 1,045	400	17	70	487	192	8	0	34	592	25	0	617	104	721
1,045 - 1,040	400	17	70	487	240	10	200	76	640	27	200	867	146	1,013
1,040 - 1,035	400	17	70	487	240	10	250	84	640	27	250	917	154	1,071
1,035 - 1,030	400	17	70	487	240	10	300	92	640	27	300	967	162	1,129
1,030 - 1,025	400	17	70	487	240	10	350	101	640	27	350	1,017	171	1,188
<1,025	480	20	125	625	240	10	350	150	720	30	350	1,100	275	1,375

Basin States Commit to Continue Working

- The Basin States were unable to meet the mid-August deadline set by Commissioner Touton to identify 2-4 MAF of conservation.
- The Basin States will continue to meet with the U.S. to address the challenges on the Colorado River System.
- All water users have a stake in the outcome and all need to contribute to the solution.
- The Basin States are discussing ways that additional reductions can be implemented.

Percent of Traces with Event or System Condition - Lake Mead

August 2022 CRMMS-ESP Projections



Data Source: Bureau of Reclamation

Operating Condition	Pool Elevation	AZ Reduction & Contribution
Surplus	≥ 1,145'	0 KAF
Normal	> 1,090' and < 1,145'	0 KAF
Tier 0	> 1,075' and ≤ 1,090'	192 KAF
Tier 1	≥ 1,050' and ≤ 1,075'	512 KAF
Tier 2a	> 1,045' and < 1,050'	592 KAF
Tier 2b-e	≥ 1,025' and ≤ 1,045'	640 KAF
Tier 3	< 1,025'	720 KAF

Notes:

1. All results computed as the percent of traces with a system condition. Percentages shown in this table may not be representative of the full range of future possibilities that could occur with different modeling assumptions.
2. For modeling purposes, simulated years beyond 2026 assume a continuation of the 2007 Interim Guidelines, the 2019 Colorado River Basin Drought Contingency Plans, and Minute 323, including the Binational Water Scarcity Contingency Plan. With the exception of certain provisions related to ICS recovery and Upper Basin demand management, operations under these agreements are in effect through 2026. Reclamation anticipates beginning a process in early 2023 to develop operations for post-2026, and the modeling assumptions described here are subject to change for the analysis to be used in that process.

Questions?

Rachel von Gnechten
rvongnechten@AZWater.gov

James Heffner
jheffner@AZWater.gov

Additional Resources

- Arizona Reconsultation Committee: <https://new.azwater.gov/arc>
- Colorado Basin River Forecast Center: <https://www.cbrfc.noaa.gov/>
- Lower Colorado Region River Operations: <https://www.usbr.gov/lc/riverops.html>
- Upper Colorado Region River Operations: <https://www.usbr.gov/uc/water/index.html>



Meeting Agenda

1. Call to Order – Welcome & Introductions – *Chair*
2. Meeting Logistics – *Kennedy Shepard, ADWR*
3. Colorado River Update – *James Heffner, ADWR*
James will provide an update on Colorado River hydrology.
4. Arizona Water Bank Authority Preliminary 2023 Plan of Operation – *Virginia O’Connell, AWBA*
Virginia will present the AWBA 2023 Preliminary Plan of Operation.
5. Groundwater Withdrawal Fee Recommendation & WMAP
 - a. Review withdrawal fee rates and money collected in past five years, WMAP projects, and remaining balance – *Melissa Sikes, ADWR*
 - b. Discuss and recommend to ADWR Director groundwater withdrawal fee rates for reporting year 2022 - *Council*
6. WMAP Project Update and Funding Renewal Request – *Renewal of Contract #2021-3144: Jennifer Salcido, Natural Resources Education Center, Eats Maricopa Natural Resource Conservation District.*
The council will hear an update and discuss a request for a renewal of WMAP funding. Based upon such discussion, the Council may vote to make a recommendation to the director with respect to the proposed action.
7. Overdraft and the Management Goal in the Pinal AMA – *Amanda Long, ADWR*
Amanda will present on overdraft in the Pinal AMA using the method described in a recently published report assessing each AMA’s progress towards its management goal.
8. Statewide Planning Updates – *John Riggins, ADWR*
9. Call to the Council – *Council*
10. Call to the Public – *Chair*
11. Adjournment - *Chair*



2023 Preliminary AWBA Plan of Operation

Virginia O'Connell, Director



Groundwater Users Advisory Council – Pinal AMA

Sept 19, 2022

2023 Preliminary Plan of Operation

Credit Development

- **No Excess CAP water available to AWBA**
- **Goals achieved through other means**
 - Long-term Storage Credit purchases
 - Intentionally Created Surplus Firming Credits



Photo credits: NASA



Funding for 2023 Plan of Operation

Funding Source	Estimated Funds Available		Estimated Funds Utilized		Estimated Credits (AF)	
	AWBA	CAWCD	AWBA	CAWCD	Water Storage	Developed Credits
Withdrawal Fees						
Phoenix AMA ¹	\$ 1,832,000	\$ 0	\$ 1,832,000	\$ 0	0	6,134
Tucson AMA	\$ 978,000	\$ 0	\$ 978,000	\$ 0	0	3,110
Water Storage Tax²						
Phoenix AMA	\$ 0	\$ 3,321,000	\$ 0	\$ 3,321,000	0	10,640
Pinal AMA	\$ 0	\$ 0	\$ 0	\$ 0	0	0
Tucson AMA	\$ 0	\$ 7,818,000	\$ 0	\$ 7,818,000	0	24,900
Total	\$	13,949,000	\$	13,949,000	0	44,784

¹ Funds used to develop ICS Firming Credits at \$268.80/AF pursuant to AWBA's 2019 IGA with the Community. Developed credits include a 10% loss factor.

² Carryover from funds reserved by the CAWCD Board of Directors for AWBA LTSC purchases in 2021 and 2022.

Distribution of Credits

Firming for 2023

- Tier 2a Shortage Condition
- Tribal firming obligation for the Community
- No firming for CAP M&I or on-River (sub)contractors

No request for Intentionally Created Unused Apportionment



Photo credits: NASA



Estimated Firming Volumes thru 2023

Objective and Location	Estimated Credits Available as of Dec 31, 2022 ¹	Estimated Credits Used in 2023	Estimated Credits Remaining as of Dec 31, 2023
	Acre-feet		
CAP M&I Firming (4-cent tax)	2,329,507	0	2,329,507
Phoenix AMA	1,582,489	0	1,582,489
Pinal AMA	234,791	0	234,791
Tucson AMA	512,227	0	512,227
On-River M&I Firming (gen. fund)	403,830	0	403,830
Tribal Settlement Obligations:²	169,281	15,000	154,281
Community - 15,000 AFY	169,281	15,000	154,281
LTSCs	105,390	0	105,390
Firming Credits	37,571	15,000	22,571
ICS Firming Credits	26,320	0	26,320
WMAT - 3,750 AFY	0	0	0
Hualapai - 557.5 AFY	0	0	0
Future Settlements- 4416.5 AFY	0	0	0
Federal Assistance (SAWRSA)	34,102	0	34,102
Groundwater Mgmt.³ (W/Fees)	776,265	0	776,265
Phoenix AMA	251,411	0	251,411
Pinal AMA	417,706	0	417,706
Tucson AMA	107,148	0	107,148
Shortage Reparations⁴	109,489	0	109,489
Pinal Redirect Credits⁵	14,125	0	14,125
Interstate - SNWA	613,846	0	613,846

¹ Includes all credits accrued and utilized through 2022.

² WMAT enforceability date is April 30, 2025; Hualapai settlement subject to congressional approval.

³ Withdrawal Fee LTSCs may be used for CAP M&I firming and/or Tribal settlement obligations if needed.

⁴ LTSCs accrued pursuant to Arizona-Nevada Shortage-Sharing Agreement executed in 2007.

⁵ Credits accrued from water provided to Pinal AMA GSFs at full cost to the GSF operators.

Questions?

Email: voconnell@azwater.gov

Website: <https://waterbank.az.gov/>



Meeting Agenda

1. Call to Order – Welcome & Introductions – *Chair*
2. Meeting Logistics – *Kennedy Shepard, ADWR*
3. Colorado River Update – *James Heffner, ADWR*
James will provide an update on Colorado River hydrology.
4. Arizona Water Bank Authority Preliminary 2023 Plan of Operation – *Virginia O’Connell, AWBA*
Virginia will present the AWBA 2023 Preliminary Plan of Operation.
5. Groundwater Withdrawal Fee Recommendation & WMAP
 - a. Review withdrawal fee rates and money collected in past five years, WMAP projects, and remaining balance – *Melissa Sikes, ADWR*
 - b. Discuss and recommend to ADWR Director groundwater withdrawal fee rates for reporting year 2022 - *Council*
6. WMAP Project Update and Funding Renewal Request – *Renewal of Contract #2021-3144: Jennifer Salcido, Natural Resources Education Center, Eats Maricopa Natural Resource Conservation District.*
The council will hear an update and discuss a request for a renewal of WMAP funding. Based upon such discussion, the Council may vote to make a recommendation to the director with respect to the proposed action.
7. Overdraft and the Management Goal in the Pinal AMA – *Amanda Long, ADWR*
Amanda will present on overdraft in the Pinal AMA using the method described in a recently published report assessing each AMA’s progress towards its management goal.
8. Statewide Planning Updates – *John Riggins, ADWR*
9. Call to the Council – *Council*
10. Call to the Public – *Chair*
11. Adjournment - *Chair*



Meeting Agenda

1. Call to Order – Welcome & Introductions – *Chair*
2. Meeting Logistics – *Kennedy Shepard, ADWR*
3. Colorado River Update – *James Heffner, ADWR*
James will provide an update on Colorado River hydrology.
4. Arizona Water Bank Authority Preliminary 2023 Plan of Operation – *Virginia O’Connell, AWBA*
Virginia will present the AWBA 2023 Preliminary Plan of Operation.
5. Groundwater Withdrawal Fee Recommendation & WMAP
 - a. Review withdrawal fee rates and money collected in past five years, WMAP projects, and remaining balance – *Melissa Sikes, ADWR*
 - b. Discuss and recommend to ADWR Director groundwater withdrawal fee rates for reporting year 2022 - *Council*
6. WMAP Project Update and Funding Renewal Request – *Renewal of Contract #2021-3144: Jennifer Salcido, Natural Resources Education Center, Eats Maricopa Natural Resource Conservation District.*
The council will hear an update and discuss a request for a renewal of WMAP funding. Based upon such discussion, the Council may vote to make a recommendation to the director with respect to the proposed action.
7. Overdraft and the Management Goal in the Pinal AMA – *Amanda Long, ADWR*
Amanda will present on overdraft in the Pinal AMA using the method described in a recently published report assessing each AMA’s progress towards its management goal.
8. Statewide Planning Updates – *John Riggins, ADWR*
9. Call to the Council – *Council*
10. Call to the Public – *Chair*
11. Adjournment - *Chair*



Natural Resource Education Center



DESTINATION CONSERVATION

Farm Filled Ag-Ventures

Natural Resource Education Center at Central Arizona College Signal Peak Campus



**NREC
STAFF**



JENNIFER SALCIDO
DIRECTOR

TEACHING TEAM:

JAN ZAPATA
LORALEE WUERTZ
CAROLYN HARBISON



Natural Resource Education Center Programs



➤ **On-line presentations**



➤ **Classroom Visits**

➤ **Field Trips**



NREC PROGRAMS



6 “Farm Filled Ag-Ventures” programs are offered each year:

- Veggie Ventures
- Water out West (WOW)
- Ag-Ventures Corn Festival
- From Alfalfa to Ice Cream
- The Five C’s of Arizona
- Let’s get crackin’ egg program



**NREC is sponsored by three (3)
Natural Resource Conservation Districts**

~Eloy Natural Resource Conservation District~

~Florence-Coolidge Natural Resource Conservation District~

~West Pinal Natural Resource Conservation District~



**NREC is over seen by the Arizona State Land
Department**

Grants



- **Arizona Department of Water Resources**
- **Gila River Indian Community**
- **Pinal 40**



WATER OUT WEST

- curriculum for K-5th graders
 - Az State Educational Standards
 - STEM
- Builds on information they learned during 4th grade, Project Wet
- Unique program throughout Arizona

Water cycle



Water sheds



Rolling Rivers



Water movement/management



Water history/conservation

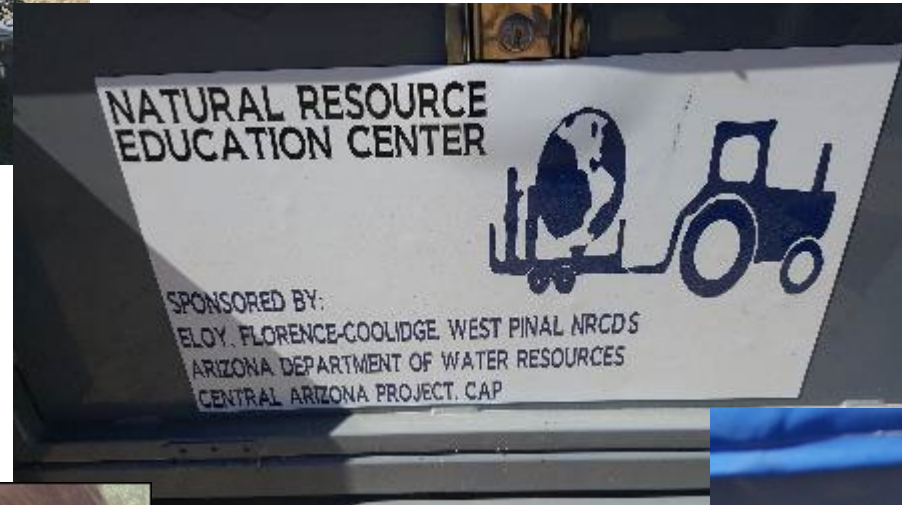


irrigation





Rolling Rivers Mobile Trailers



Water Out West
(WOW)





Other expenses

- **Resource materials**
- **Classroom supplies**
- **Office supplies**
- **Classroom lease**
- **Internet WiFi**
- **Accountant**

2022-2023

- ✓ Resume In classroom visits/field trips
- ✓ maintenance of NREC farm at CAC
- ✓ material kits for classroom follow-up/support





THANK YOU

Arizona Department of Water Resources

for your continued generous support
of the

Natural Resource Education Center

Meeting Agenda

1. Call to Order – Welcome & Introductions – *Chair*
2. Meeting Logistics – *Kennedy Shepard, ADWR*
3. Colorado River Update – *James Heffner, ADWR*
James will provide an update on Colorado River hydrology.
4. Arizona Water Bank Authority Preliminary 2023 Plan of Operation – *Virginia O’Connell, AWBA*
Virginia will present the AWBA 2023 Preliminary Plan of Operation.
5. Groundwater Withdrawal Fee Recommendation & WMAP
 - a. Review withdrawal fee rates and money collected in past five years, WMAP projects, and remaining balance – *Melissa Sikes, ADWR*
 - b. Discuss and recommend to ADWR Director groundwater withdrawal fee rates for reporting year 2022 - *Council*
6. WMAP Project Update and Funding Renewal Request – *Renewal of Contract #2021-3144: Jennifer Salcido, Natural Resources Education Center, Eats Maricopa Natural Resource Conservation District.*
The council will hear an update and discuss a request for a renewal of WMAP funding. Based upon such discussion, the Council may vote to make a recommendation to the director with respect to the proposed action.
7. Overdraft and the Management Goal in the Pinal AMA – *Amanda Long, ADWR*
Amanda will present on overdraft in the Pinal AMA using the method described in a recently published report assessing each AMA’s progress towards its management goal.
8. Statewide Planning Updates – *John Riggins, ADWR*
9. Call to the Council – *Council*
10. Call to the Public – *Chair*
11. Adjournment - *Chair*





Overdraft and the Management Goal in the Pinal AMA

Pinal AMA GUAC Meeting
September 19, 2022
Amanda Long
Associate Water Analyst

Management Goals (A.R.S. § 45-562)

Pinal AMA:

“The management goal of the Pinal active management area is to allow development of non-irrigation uses as provided in this chapter and to preserve existing agricultural economies in the active management area for as long as feasible, consistent with the necessity to preserve future water supplies for non-irrigation uses.”

(A.R.S. § 45-562(B))

Prescott, Phoenix, and Tucson AMAs:

Safe-yield by the year 2025

Santa Cruz AMA:

To maintain a safe-yield condition in the AMA and to prevent local water tables from experiencing long term declines



Discussion of the Management Goals in the Management Plans

- * First to fourth management plans:
 - * Not consistent
 - * Past plans may have included:
 - * Annual water budgets overtime
 - * Potential for meeting the management goal under various projections and scenarios
 - * Impediments to reaching the management goal
 - * Often did not include the actual status of the goal
- * Goal for 5MP:
 - * Clear, consistent methodology for assessing the management goal in each AMA
 - * A method to communicate the status of the goal to the public, regulated community, and water professionals

MANAGEMENT PLANS WORK GROUP

A.R.S. § 45-563 (A)

“The director shall develop a management plan for each initial active management area for each of five management periods... and shall adopt the plans only after public hearings... The plans shall include a continuing mandatory conservation program... designed to achieve reductions in withdrawals of groundwater.”

ADWR-led stakeholder forum for the development of the 5th Management Plans (2019-2021)

Goals:

- * Assess existing conservation programs
- * Update existing management strategies
- * Develop new management strategies

Five Subgroups Created

- * Agricultural
- * Municipal
- * Industrial
- * Turf
- * Safe-Yield Technical Subgroup
 - * Safe-yield is **not** the goal of the Pinal AMA
 - * Meeting discussions specific to safe-yield are not relevant to the Pinal AMA.

Agenda

- * The Pinal AMA Management goal
- * Fifth Management Plans Work Group: Technical Subgroup
 - Annual Overdraft Calculation
 - Long-Term Overdraft Calculation
 - Communication Strategy
- * Overdraft Data Dashboard
- * Status of Management Goal in the Pinal AMA

OVERDRAFT, SAFE-YIELD, AND THE MANAGEMENT GOALS OF ARIZONA'S ACTIVE MANAGEMENT AREAS

JANUARY 2022



EMAIL: MANAGEMENTPLANS@AZWATER.GOV
TEL: 602-771-8585

ADDRESS: 1110 W, WASHINGTON STREET,
SUITE 310, PHOENIX, AZ 85007

FIFTH MANAGEMENT PLAN PINAL ACTIVE MANAGEMENT AREA

2020-2025



EMAIL: MANAGEMENTPLANS@AZWATER.GOV
TEL: 602-771-8585

ADDRESS: 1110 W, WASHINGTON STREET,
SUITE 310, PHOENIX, AZ 85007

Report available at:
https://new.azwater.gov/sites/default/files/media/ManagementGoalsReport2022_o.pdf

<https://new.azwater.gov/sites/default/files/media/PAMA5MP.pdf>

Pinal AMA Management Goal

Pinal AMA Management Goal:

“The management goal of the Pinal active management area is to allow development of non-irrigation uses as provided in this chapter and to preserve existing agricultural economies in the active management area for as long as feasible, consistent with the necessity to preserve future water supplies for non-irrigation uses.”

(A.R.S. § 45-562(B))

Assessment:

- * Quantitative:
 - * Long-term overdraft trends
- * Qualitative:
 - * Factors influencing progress towards the management goal
- * Communication Strategy

Pinal AMA Management Goal

Pinal AMA Management Goal:

“The management goal of the Pinal active management area is to allow development of non-irrigation uses as provided in this chapter and to preserve existing agricultural economies in the active management area for as long as feasible, consistent with the necessity to preserve future water supplies for non-irrigation uses.”

(A.R.S. § 45-562(B))

Assessment:

- * Quantitative:
 - * Long-term overdraft trends
- * Qualitative:
 - * Factors influencing progress towards the management goal
- * Communication Strategy

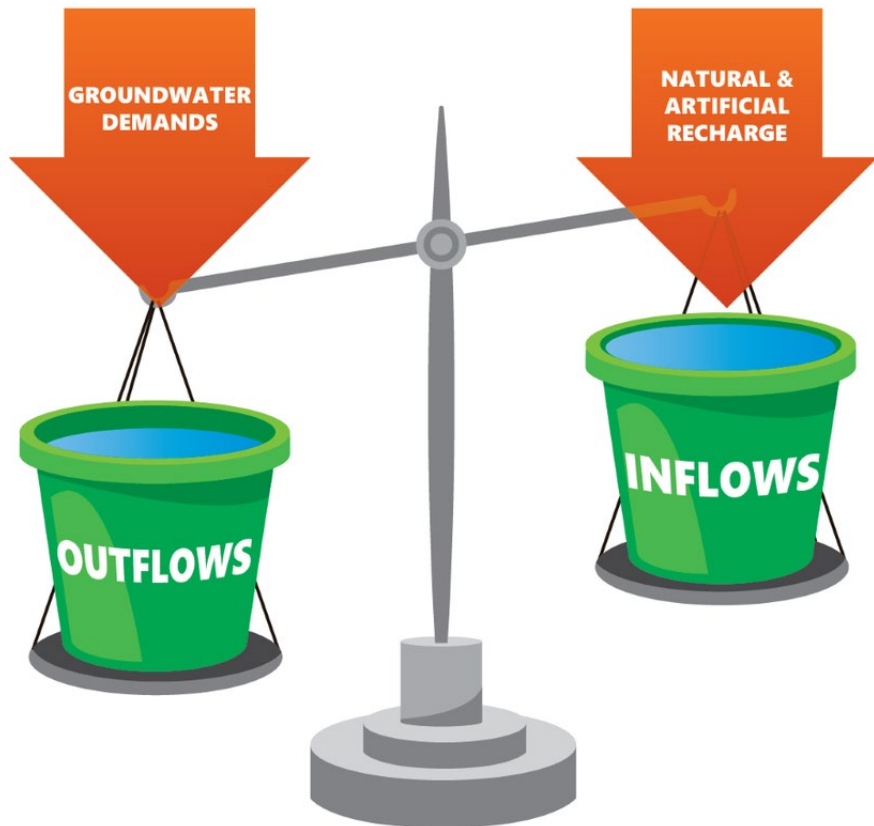
5MP Concepts

- * Development dashboard and concept/proposal summaries:

<https://new.azwater.gov/5MP/plans-concepts>



Overdraft Calculation



OVERDRAFT

Outflows from Aquifer > Inflows to Aquifer

- * Slowing the rate of overdraft over time can contribute to extending the agricultural economy and help to preserve water supplies for non-irrigation uses
- * Overdraft Calculation
 - * Groundwater focused, AMA-level
 - * Quantitative water budget calculation comparing inflows to and outflows from the aquifer
- * Analyzing trends around overdraft is one quantitative aspect that can be used to assess the Pinal AMA goal
 - * Annual Overdraft
 - * Long-term Overdraft

Annual Overdraft Calculation – Data Sources

Source	Inflows	Outflows
Natural	Groundwater Inflow	Groundwater Outflow
	Streambed Recharge	Riparian Demand
	Mountain-front Recharge	
Artificial	Incidental Recharge: Agricultural Municipal Industrial	Sector Demands: Agricultural Municipal Industrial Indian
	Canal Seepage	
	Cut to the Aquifer	Remediated Groundwater
	CAGRDR Replenishment	Poor Quality Groundwater

**Annual Calculation:
Inflows – Outflows =
Overdraft**

Items highlighted in blue are outputs of ADWR’s regional groundwater models.

Items highlighted in gray are compiled from AMA Annual Reports.

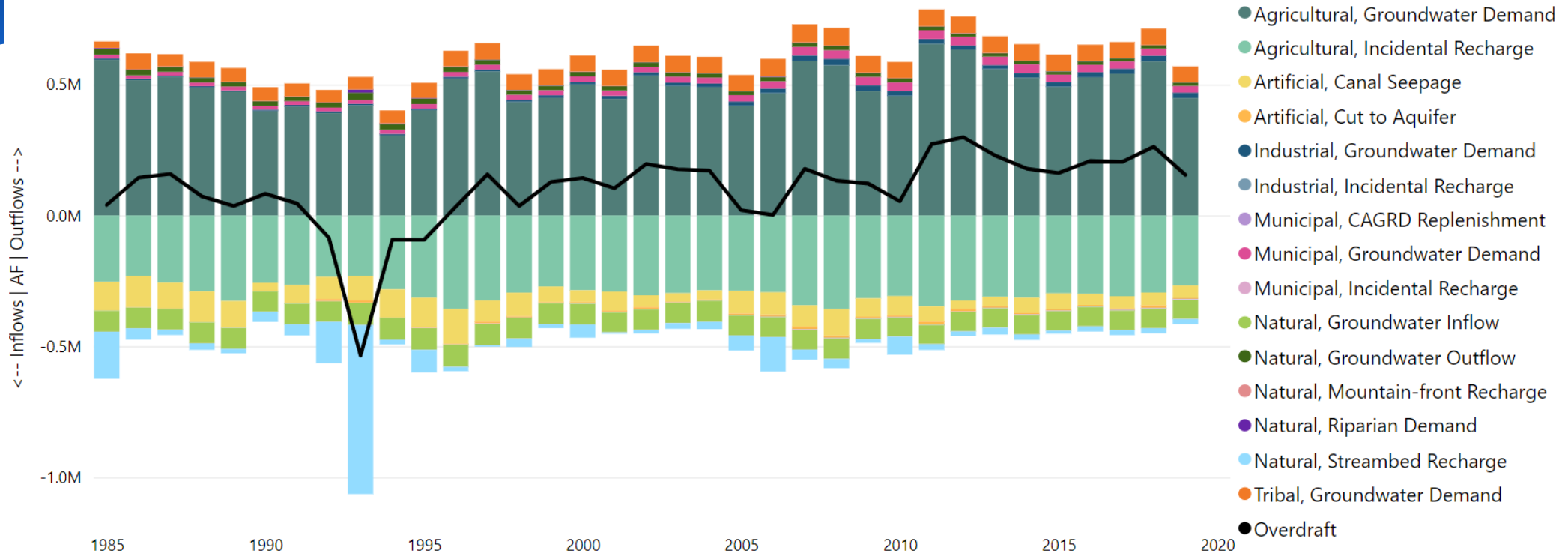


Overdraft Data Dashboard: Annual

OVERDRAFT DATA DASHBOARD: Annual Overdraft

For more information, click here for the Safe-Yield Report

Click on the columns and/or legend components to highlight specific data



Show Components

Hide Components

YEAR

1985 2019

AMA

- Phoenix
- Pinal
- Prescott
- Santa Cruz
- Tucson

SECTOR

- Agricultural
- Artificial
- Industrial
- Municipal
- Natural

COMPONENT

- CAGR Replenishment
- Canal Seepage
- Cut to Aquifer
- Groundwater Demand
- Groundwater Inflow
- Groundwater Outflow

Hold down "Ctrl" to select multiple AMAs, Sectors, and/or Components



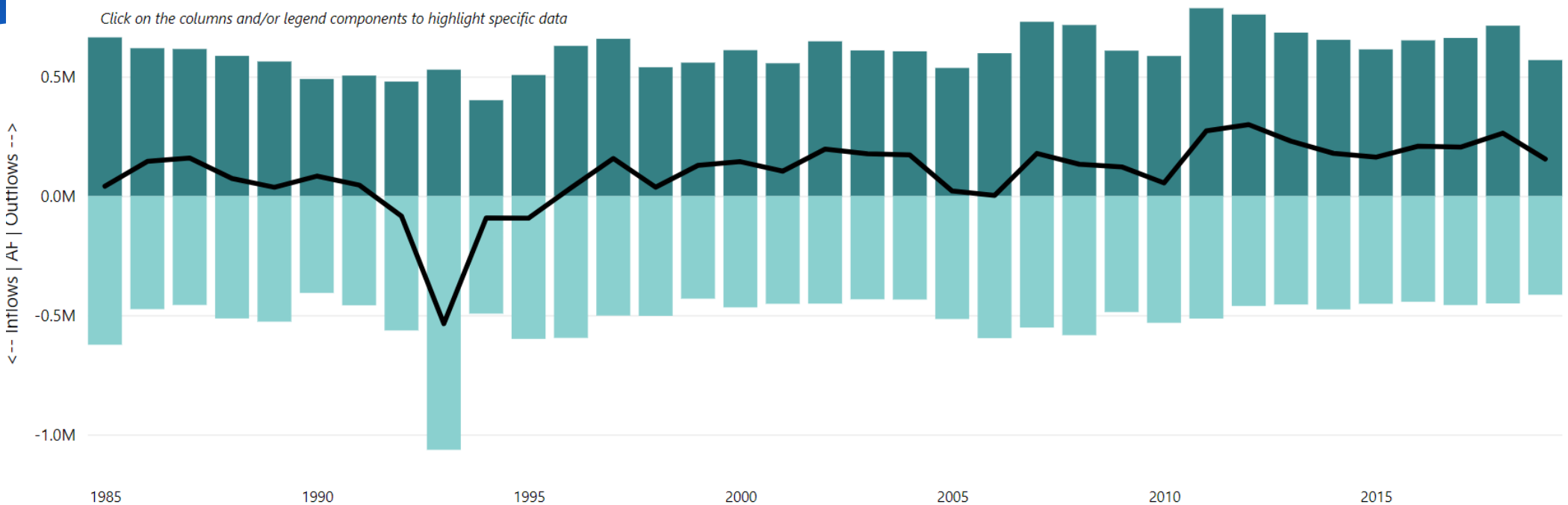
Overdraft Data Dashboard: Annual

OVERDRAFT DATA DASHBOARD: Annual Overdraft

For more information, click here for the Safe-Yield Report

● Inflow ● Outflow ● Overdraft

Click on the columns and/or legend components to highlight specific data



Show Components
Hide Components

YEAR
1985 2019

AMA
 Phoenix
 Pinal
 Prescott
 Santa Cruz
 Tucson

Hold down "Ctrl" to select multiple AMAs

SAFE-YIELD INFLOWS:

- Groundwater Inflow (Natural)*
- Streambed Recharge (Natural)*
- Mountain-front Recharge (Natural)*
- Agricultural Incidental Recharge (Artificial)
- Municipal Incidental Recharge (Artificial)
- Industrial Incidental Recharge (Artificial)
- Canal Seepage (Artificial)
- Cut to the Aquifer (Artificial)
- CAGRDR Replenishment (Artificial)

SAFE-YIELD OUTFLOWS:

- Groundwater Outflow (Natural)*
- Riparian Demand (Natural)*
- Agricultural Demand (Artificial)
- Municipal Demand (Artificial)
- Industrial Demand (Artificial)
- Indian Demand (Artificial)



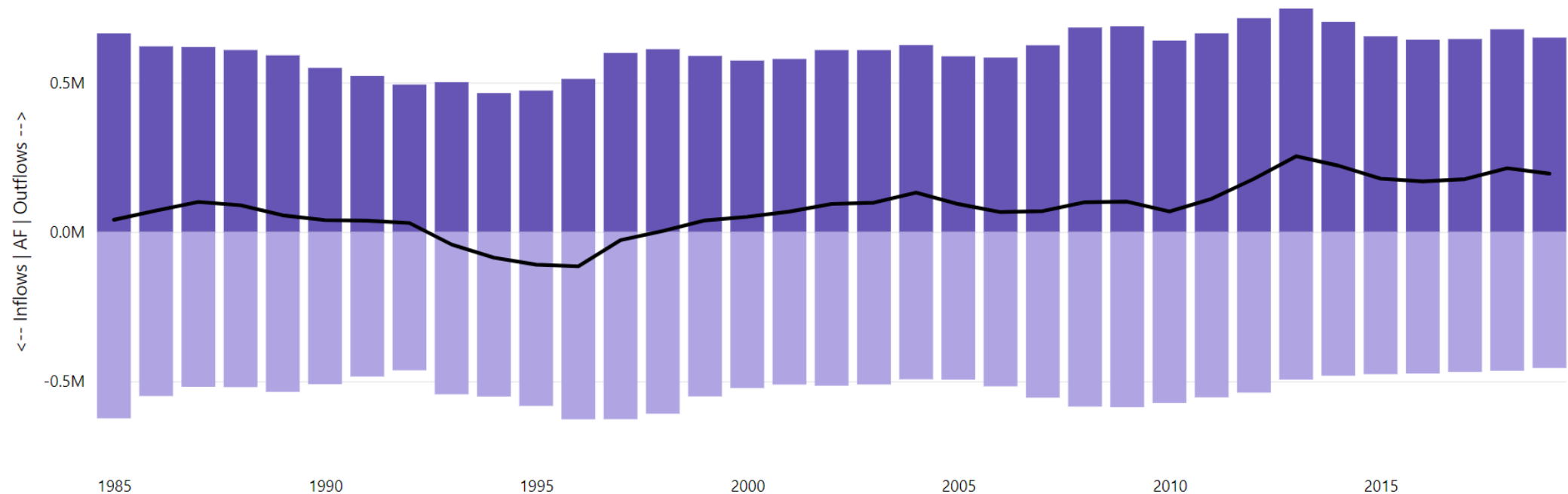
Overdraft Data Dashboard : Long-Term

OVERDRAFT DATA DASHBOARD: Long-Term Overdraft

For more information, click here for the Safe-Yield Report

The long-term method uses a 3-year rolling average of artificial components and a 20-year rolling average of natural components.

● Inflows
 ● Outflows
 ● Overdraft
 Click on the columns and/or legend components to highlight specific data



YEAR

1985 2019



AMA

- Phoenix
- Pinal
- Prescott
- Santa Cruz
- Tucson

Hold down "Ctrl" to select multiple AMAs, Sectors, and/or Components

Long-Term Balance Calculation:

- 3 year rolling average of artificial components
- 20 year rolling average of natural components

Pinal AMA Management Goal

Pinal AMA Management Goal:

“The management goal of the Pinal active management area is to allow development of non-irrigation uses as provided in this chapter and to preserve existing agricultural economies in the active management area for as long as feasible, consistent with the necessity to preserve future water supplies for non-irrigation uses.”

(A.R.S. § 45-562(B))

Assessment:

- * Quantitative:
 - * Long-term overdraft trends
- * Qualitative:
 - * Factors influencing progress towards the management goal
- * Communication Strategy

Pinal AMA Management Goal

Pinal AMA:

“The management goal of the Pinal active management area is to allow development of non-irrigation uses as provided in this chapter and to preserve existing agricultural economies in the active management area for as long as feasible, consistent with the necessity to preserve future water supplies for non-irrigation uses.”

(A.R.S. § 45-562(B))

Factors influencing progress towards the management goal

- * Colorado River shortage
 - * Cuts to the Agricultural Pool
 - * Decrease in storage and recoverable credits
 - * Increase in groundwater pumping
- * Projected unmet demand
 - * Groundwater not available for future residential development

Pinal AMA Management Goal

Pinal AMA Management Goal:

“The management goal of the Pinal active management area is to allow development of non-irrigation uses as provided in this chapter and to preserve existing agricultural economies in the active management area for as long as feasible, consistent with the necessity to preserve future water supplies for non-irrigation uses.”

(A.R.S. § 45-562(B))

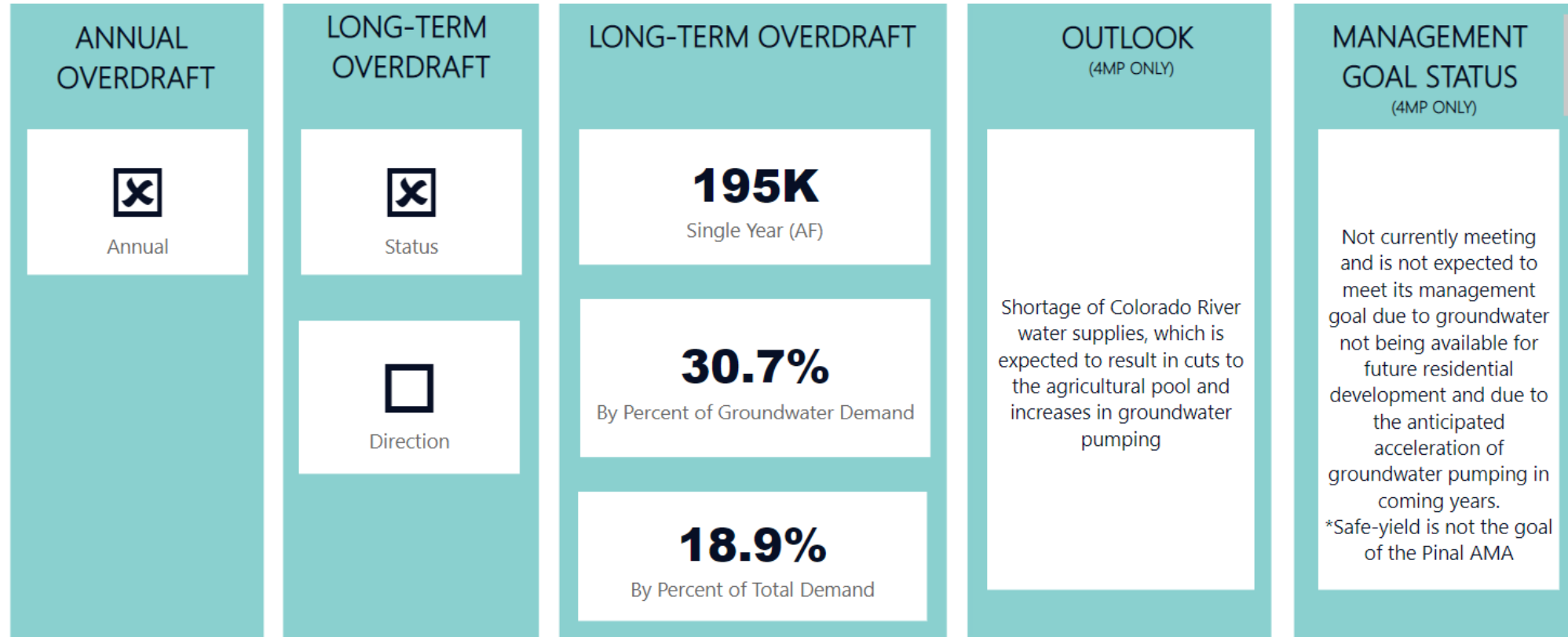
Assessment:

- * Quantitative:
 - * Long-term overdraft trends
- * Qualitative:
 - * Factors influencing progress towards the management goal
- * Communication Strategy

Communication Strategy: Technical

OVERDRAFT DATA DASHBOARD: Management Goal Assessment

For more information, click here for the Safe-Yield Report



AMA

- Phoenix
- Pinal
- Prescott
- Santa Cruz
- Tucson

Management Period


- 1MP (1985-1989)
- 2MP(1990-1999)
- 3MP (2000-2009)
- 4MP (2010-Present)

2019

Last Year of Long-Term Analysis

METRIC DEFINITIONS:

For the definition of the metric:

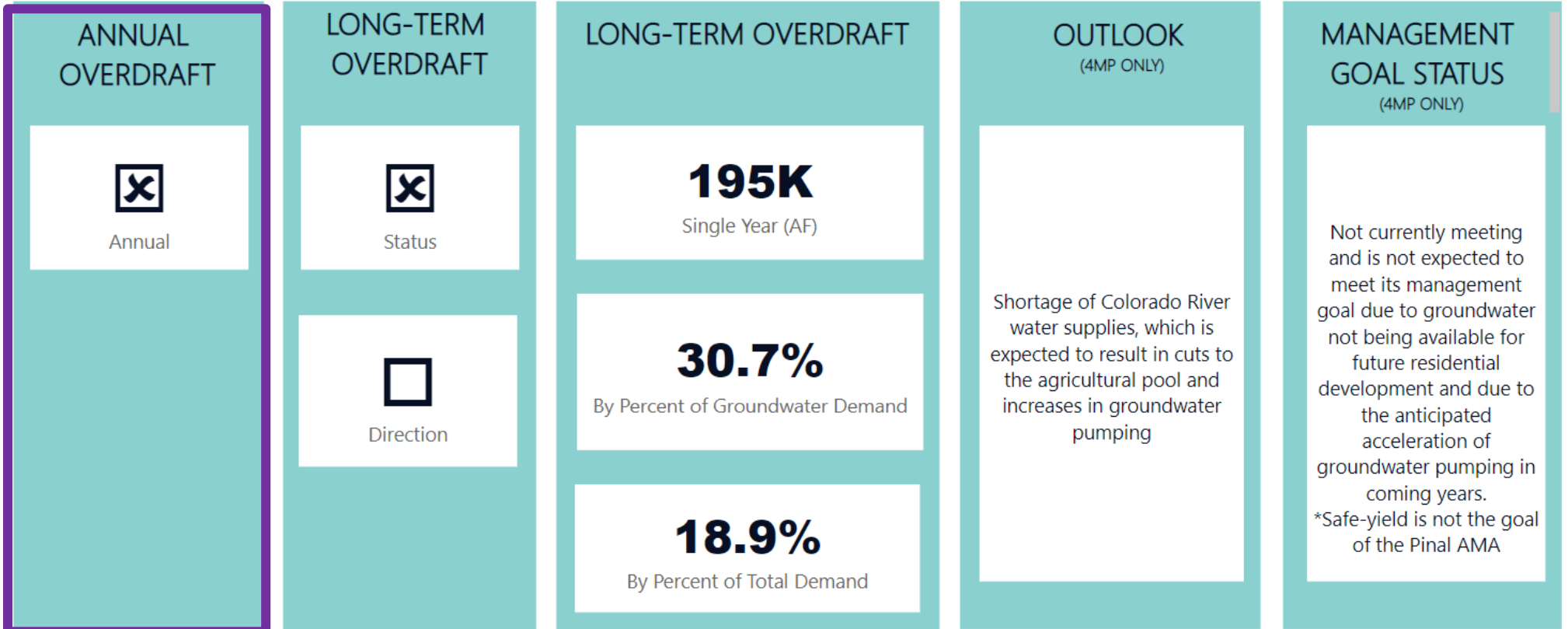
1. Hover over the white metric box and this symbol 
2. See Section 7 of the Safe-Yield Report



Communication Strategy: Technical

OVERDRAFT DATA DASHBOARD: Management Goal Assessment

For more information, click here for the Safe-Yield Report



Annual Overdraft Calculation, Qualitative

AMA

- Phoenix
- Pinal
- Prescott
- Santa Cruz
- Tucson

Management Period


- 1MP (1985-1989)
- 2MP(1990-1999)
- 3MP (2000-2009)
- 4MP (2010-Present)

2019

Last Year of Long-Term Analysis

METRIC DEFINITIONS:

For the definition of the metric:

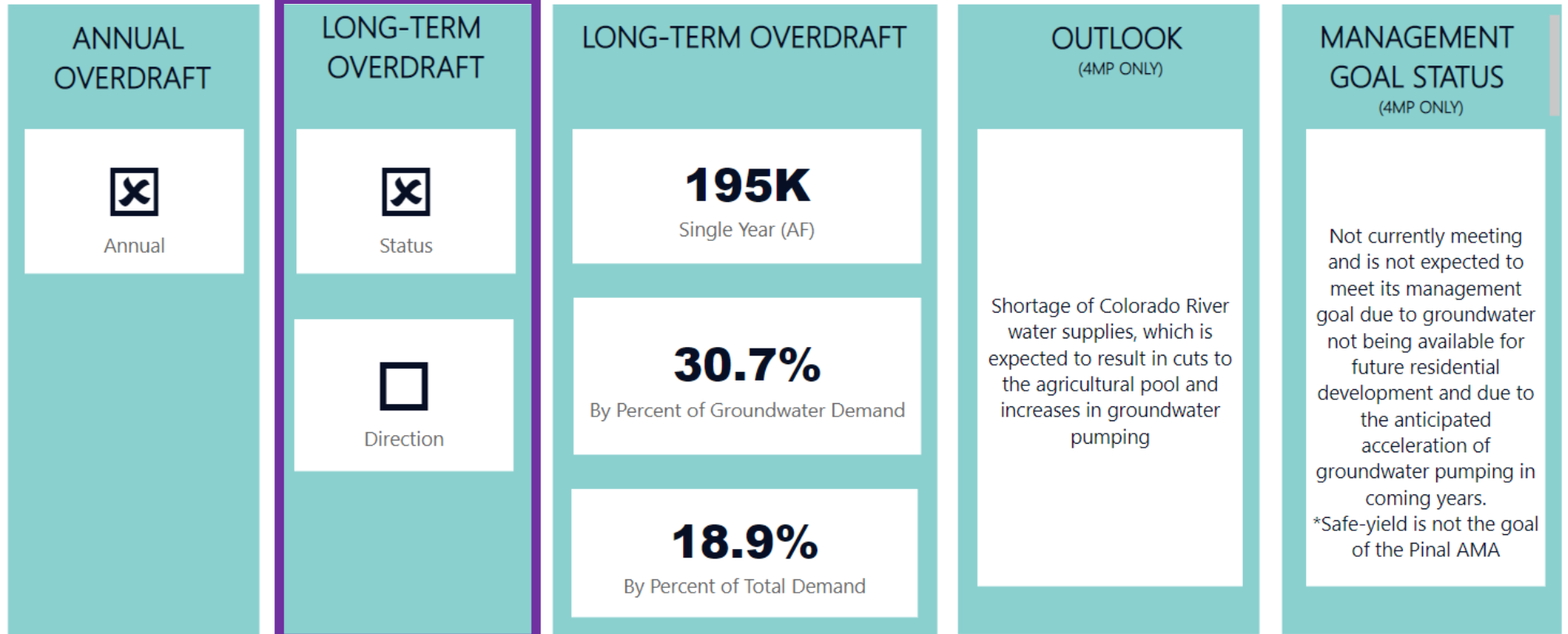
1. Hover over the white metric box and this symbol 
2. See Section 7 of the Safe-Yield Report



Communication Strategy: Technical

OVERDRAFT DATA DASHBOARD: Management Goal Assessment

For more information, click here for the Safe-Yield Report



Long-Term Overdraft Calculation, Qualitative

AMA

- Phoenix
- Pinal
- Prescott
- Santa Cruz
- Tucson

Management Period


- 1MP (1985-1989)
- 2MP(1990-1999)
- 3MP (2000-2009)
- 4MP (2010-Present)

2019

Last Year of Long-Term Analysis

METRIC DEFINITIONS:

For the definition of the metric:

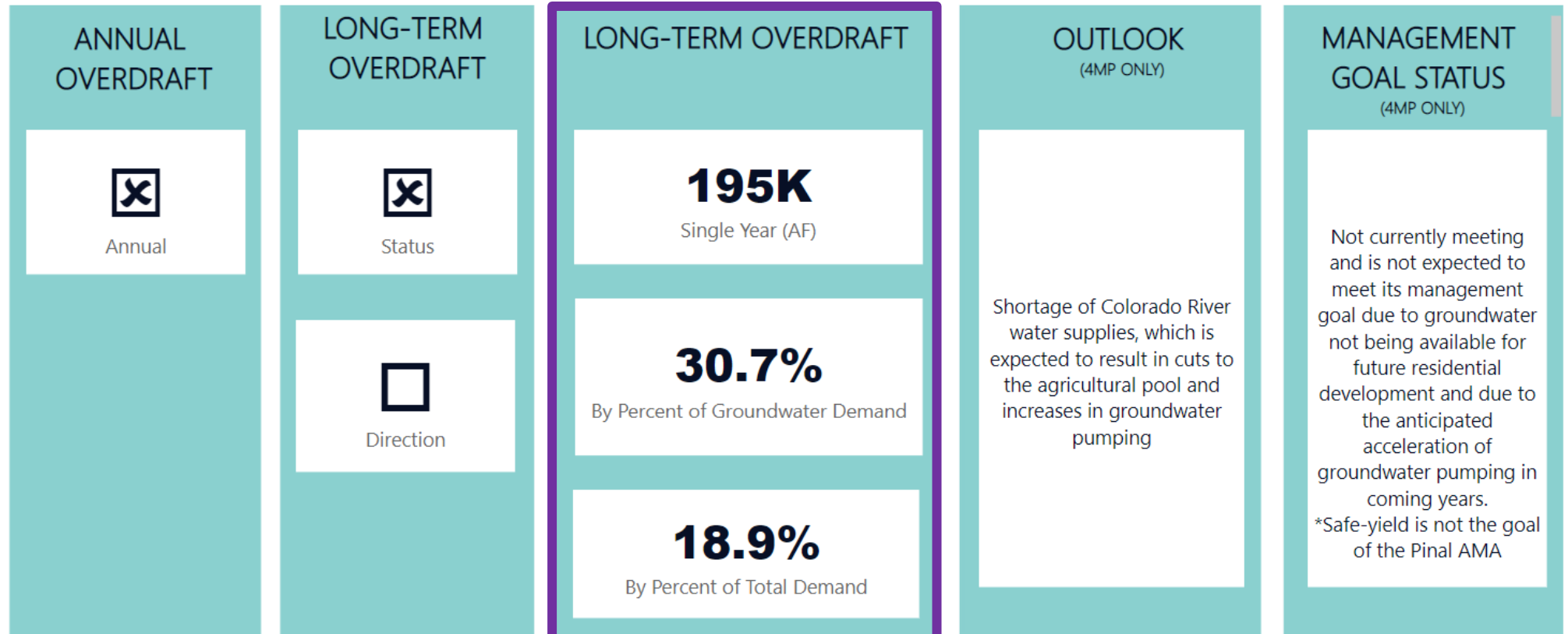
1. Hover over the white metric box and this symbol 
2. See Section 7 of the Safe-Yield Report



Communication Strategy: Technical

OVERDRAFT DATA DASHBOARD: Management Goal Assessment

For more information, click here for the Safe-Yield Report



Long-Term Overdraft Calculation, Quantitative

AMA


- Phoenix
- Pinal
- Prescott
- Santa Cruz
- Tucson

Management Period

- 1MP (1985-1989)
- 2MP (1990-1999)
- 3MP (2000-2009)
- 4MP (2010-Present)

2019
Last Year of Long-Term Analysis

METRIC DEFINITIONS:

- For the definition of the metric:
- Hover over the white metric box and this symbol 
 - See Section 7 of the Safe-Yield Report



Communication Strategy: Technical

OVERDRAFT DATA DASHBOARD: Management Goal Assessment

For more information, click here for the Safe-Yield Report

ANNUAL OVERDRAFT



Annual

LONG-TERM OVERDRAFT



Status



Direction

LONG-TERM OVERDRAFT

195K

Single Year (AF)

30.7%

By Percent of Groundwater Demand

18.9%

By Percent of Total Demand

OUTLOOK (4MP ONLY)

Shortage of Colorado River water supplies, which is expected to result in cuts to the agricultural pool and increases in groundwater pumping

MANAGEMENT GOAL STATUS (4MP ONLY)

Not currently meeting and is not expected to meet its management goal due to groundwater not being available for future residential development and due to the anticipated acceleration of groundwater pumping in coming years.
*Safe-yield is not the goal of the Pinal AMA

AMA

- Phoenix
- Pinal
- Prescott
- Santa Cruz
- Tucson

Management Period


- 1MP (1985-1989)
- 2MP(1990-1999)
- 3MP (2000-2009)
- 4MP (2010-Present)

2019

Last Year of Long-Term Analysis

METRIC DEFINITIONS:

For the definition of the metric:

1. Hover over the white metric box and this symbol 
2. See Section 7 of the Safe-Yield Report

<https://new.azwater.gov/ama/ama-data>

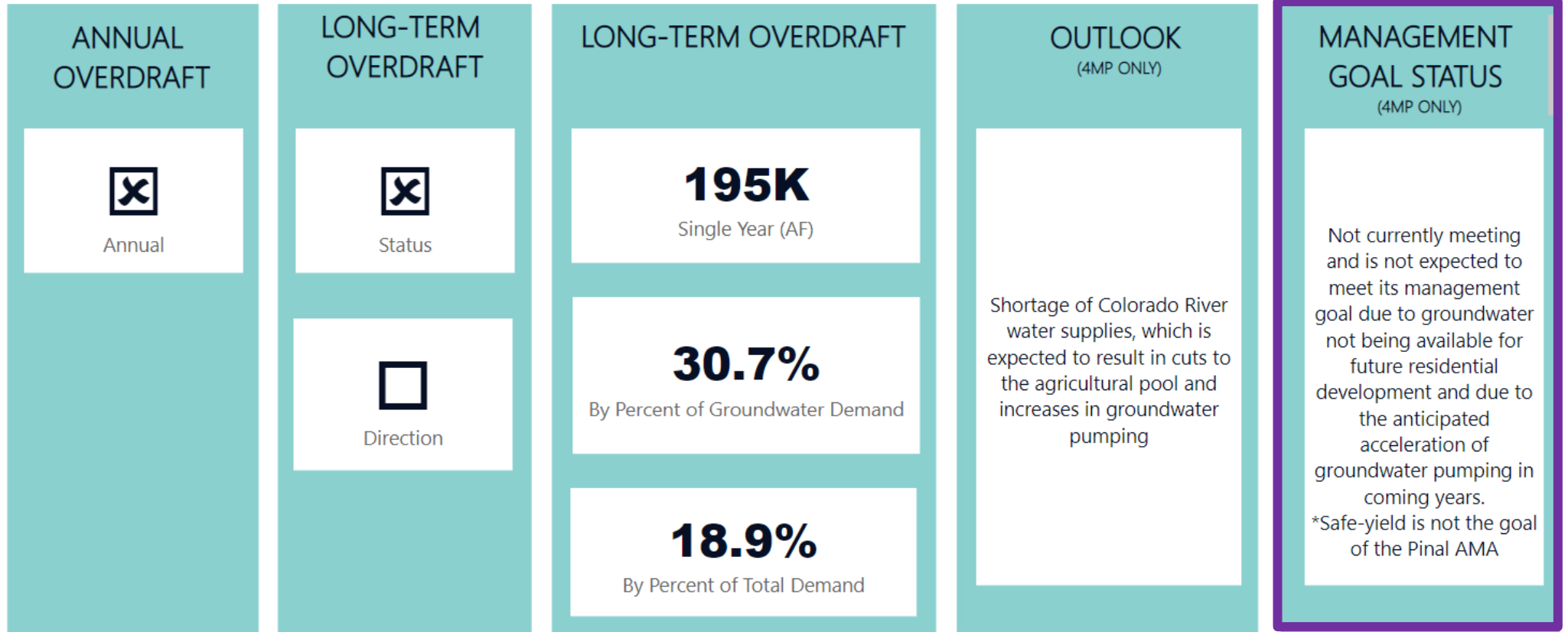


Factors influencing progress towards the management goal , Qualitative

Communication Strategy: Technical

OVERDRAFT DATA DASHBOARD: Management Goal Assessment

For more information, click here for the Safe-Yield Report



Status of Management Goal, Qualitative

AMA

- Phoenix
- Pinal
- Prescott
- Santa Cruz
- Tucson

Management Period

- 1MP (1985-1989)
- 2MP(1990-1999)
- 3MP (2000-2009)
- 4MP (2010-Present)

2019

Last Year of Long-Term Analysis

METRIC DEFINITIONS:

- For the definition of the metric:
1. Hover over the white metric box and this symbol
 2. See Section 7 of the Safe-Yield Report



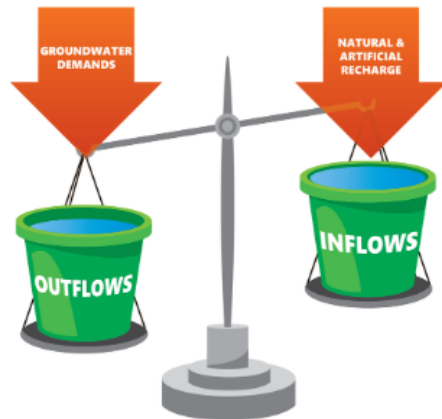
Communication Strategy: General Public

OVERDRAFT DATA DASHBOARD: Status of Management Goal

For more information, click here for the Safe-Yield Report*

Overdraft

An annual or long-term AMA-level condition where outflows from the aquifer are greater than inflows to the aquifer. Annual or long-term balance exists when there is no overdraft in an AMA.



Safe-yield

An AMA level condition where inflows and outflows are balanced and maintained in the long-term. Safe-yield is the management goal for the Prescott, Phoenix, and Tucson AMA. Safe-yield is also a portion of Santa Cruz management goal. **Safe-yield is not the management goal of the Pinal AMA.**

ACHIEVE AND MAINTAIN LONG-TERM BALANCE = SAFE-YIELD!



Status of the Management Goal

Not currently meeting and is not expected to meet its management goal due to groundwater not being available for future residential development and due to the anticipated acceleration of groundwater pumping in coming years.

*Safe-yield is not the goal of the Pinal AMA

AMA

- Phoenix
- Pinal
- Prescott
- Santa Cruz
- Tucson

Year of Management Goal Assessment:

2019

5TH MANAGEMENT PLANS CONCEPTS

Concepts and stakeholder comments related to the development of the 5MP conservation programs are available below. The draft 5MP for each AMA can be found on the [Management Plans page](#) under the "Fifth" dropdown.

AGRICULTURAL SUBGROUP >

INDUSTRIAL SUBGROUP >

TURF BREAKOUT GROUP >

MUNICIPAL SUBGROUP >

SAFE-YIELD TECHNICAL SUBGROUP v

> [Concept: Annual Calculation and Long-Term Analysis of Safe-Yield](#)

> [Concept: Methods of Communicating Safe-Yield](#)


RECHARGE SUBGROUP

OTHER TOPICS

[5th Management Plans Workgroup
https://new.azwater.gov/5MP/plans-concepts](https://new.azwater.gov/5MP/plans-concepts)

OVERDRAFT, SAFE-YIELD, AND THE MANAGEMENT GOALS OF ARIZONA'S ACTIVE MANAGEMENT AREAS

JANUARY 2022



ARIZONA DEPARTMENT OF WATER RESOURCES

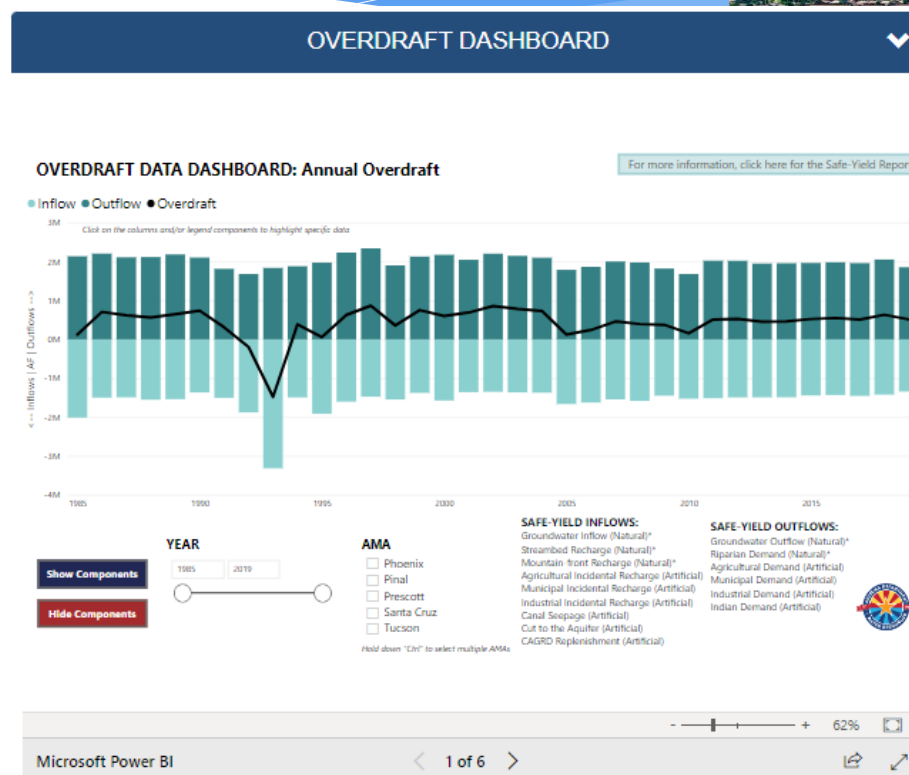
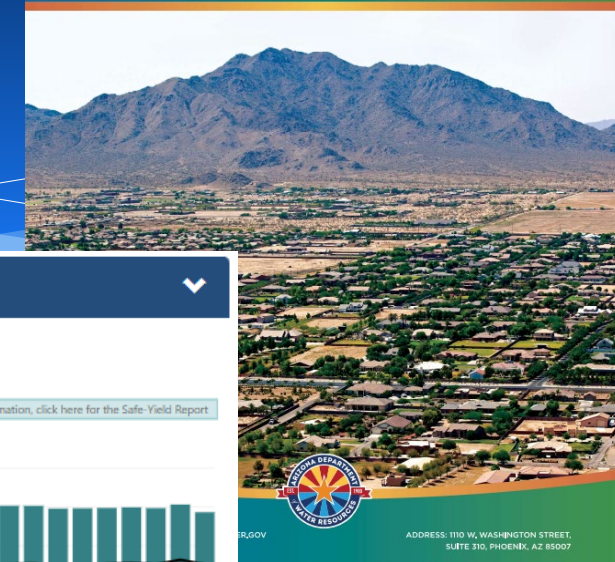
EMAIL: MANAGEMENTPLANS@AZWATER.GOV
TEL: 602-771-8585

ADDRESS: 1110 W, WASHINGTON STREET,
SUITE 310, PHOENIX, AZ 85007

Report available at:
https://new.azwater.gov/sites/default/files/media/2022_SYReport_o.pdf

Resources

FIFTH MANAGEMENT PLAN PINAL ACTIVE MANAGEMENT AREA 2020-2025



[Source Data](#)

Overdraft Data Dashboard: <https://new.azwater.gov/ama/ama-data>

<https://new.azwater.gov/sites/default/files/media/PAMA5MP.pdf>

Questions?

Amanda Long
Associate Water Analyst
along@azwater.gov
(602) 771-8420

Natalie Mast
AMA Director - Planning
nlmast@azwater.gov
(602) 771-4646



Meeting Agenda

1. Call to Order – Welcome & Introductions – *Chair*
2. Meeting Logistics – *Kennedy Shepard, ADWR*
3. Colorado River Update – *James Heffner, ADWR*
James will provide an update on Colorado River hydrology.
4. Arizona Water Bank Authority Preliminary 2023 Plan of Operation – *Virginia O’Connell, AWBA*
Virginia will present the AWBA 2023 Preliminary Plan of Operation.
5. Groundwater Withdrawal Fee Recommendation & WMAP
 - a. Review withdrawal fee rates and money collected in past five years, WMAP projects, and remaining balance – *Melissa Sikes, ADWR*
 - b. Discuss and recommend to ADWR Director groundwater withdrawal fee rates for reporting year 2022 - *Council*
6. WMAP Project Update and Funding Renewal Request – *Renewal of Contract #2021-3144: Jennifer Salcido, Natural Resources Education Center, Eats Maricopa Natural Resource Conservation District.*
The council will hear an update and discuss a request for a renewal of WMAP funding. Based upon such discussion, the Council may vote to make a recommendation to the director with respect to the proposed action.
7. Overdraft and the Management Goal in the Pinal AMA – *Amanda Long, ADWR*
Amanda will present on overdraft in the Pinal AMA using the method described in a recently published report assessing each AMA’s progress towards its management goal.
8. Statewide Planning Updates – *John Riggins, ADWR*
9. Call to the Council – *Council*
10. Call to the Public – *Chair*
11. Adjournment - *Chair*



Supply & Demand



John Riggins
Statewide Planning Manager



Arizona's Water Future

As Arizona transitions to a drier future, we must continue to promote a culture of conservation - one that enables the unbeatable quality of life and boundless opportunity we enjoy.

GOVERNOR DOUG DUCEY

Signs Arizona DCP Legislation (1.31.19)

SECURING ARIZONA'S WATER FUTURE

“Challenges bring opportunity. This expansion of WIFA creates an opportunity for the state to secure its water future. I want to thank Governor Ducey, the Arizona Legislature and stakeholders for coming together to collaboratively come up with this important legislation.”

TOM BUSCHATZKE
DIRECTOR, ARIZONA DEPARTMENT OF WATER RESOURCES



Water Supply & Demand Analysis

A.R.S. § 45-105(B)(14)

“Not later than December 1, 2023 and on or before December 1 of each year thereafter, prepare and issue a water supply and demand assessment for at least six of the forty-six groundwater basins established pursuant to section 45-403. The director shall ensure that a water supply and demand assessment is completed for all groundwater basins at least once every five years...”



Purpose of the Analysis

A.R.S. § 49-1304

“A. The authority shall determine the order and priority of water supply development projects proposed to be funded in whole or in part with monies from the long-term water augmentation fund, participation in projects to import water or allocation of imported water based on the following, as applicable:

...

14. Existing, near-term and long-term water demands compared to the volume and reliability of existing water supplies of the beneficiaries of the funding or project. In evaluating this criterion, the authority shall consider information contained in any applicable water supply and demand assessment that has been issued by the director of water resources pursuant to section 45-105, subsection b, paragraph 14, in addition to any other information submitted to evaluate this criterion.”



Previous Assessments/Studies

DRAFT Demand and Supply Assessment	November 3 2010
<small>This Assessment is a compilation and study of historical water demand and supply characteristics for the Phoenix AMA from the year 1985 through 2006. In addition, the Assessment calculates eight water supply and demand projection scenarios to the year 2025.</small>	Phoenix Active Management Area

DRAFT Demand and Supply Assessment	May 13 2011
---	-----------------------

DRAFT Demand and Supply Assessment	July 2012
<small>This Assessment is a compilation and study of historical water demand and supply characteristics for the SCAMA from the year 1985 through 2009. In addition, the Assessment calculates three projected demand scenarios and compares them to statistically generated "normal" and "dry" water supply scenarios to the year 2025.</small>	Santa Cruz Active Management Area

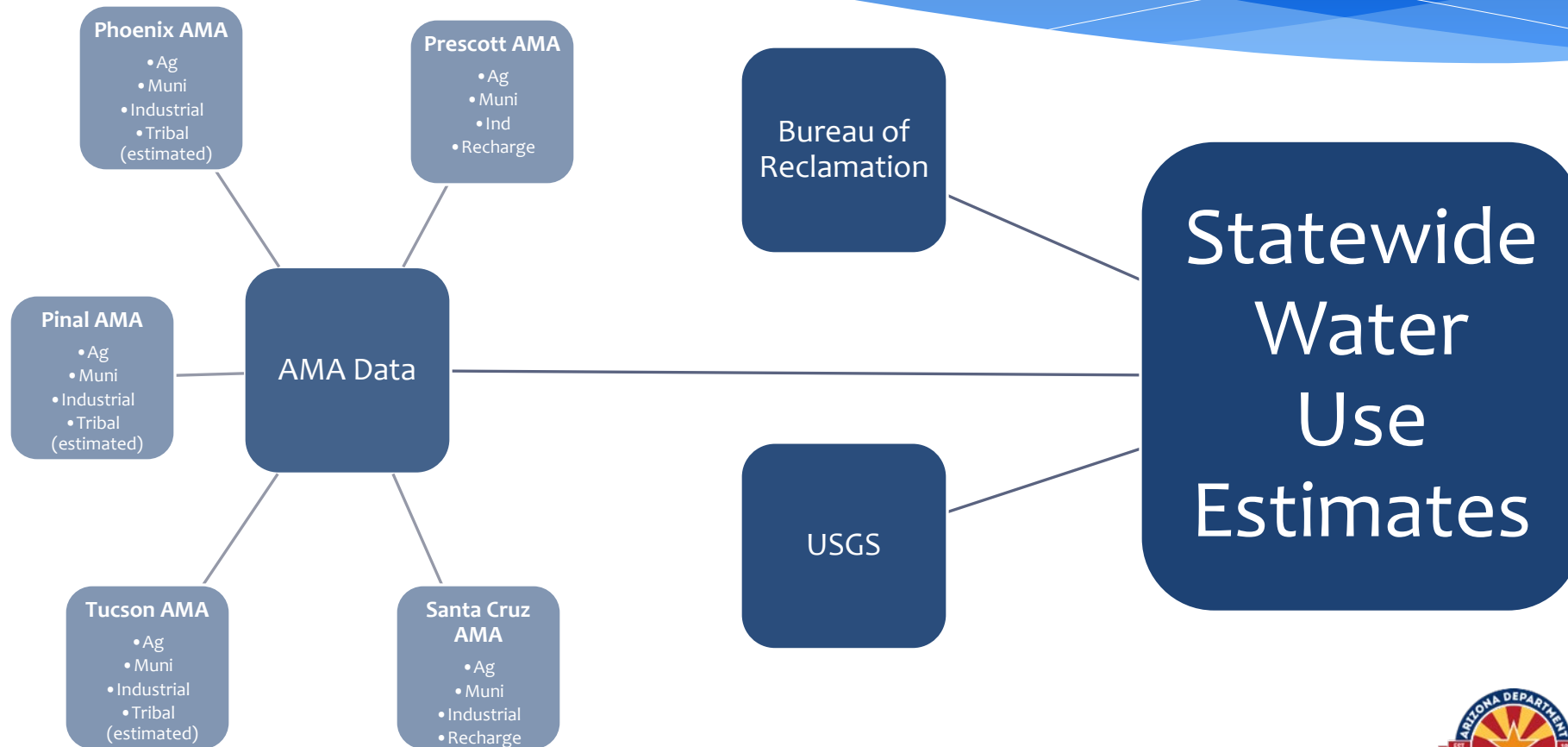
<small>Compilation and study of historical water demand and supply characteristics for the Pinal Active Management Area from the year 1985 through 2006. In addition, the Assessment calculates seven water supply and demand projection scenarios to the year 2025.</small>	Pinal Active Management Area
--	------------------------------

DRAFT Demand and Supply Assessment	May 28 2010
<small>This Assessment is a compilation and study of historical water demand and supply characteristics for the Tucson AMA from the year 1985 through 2006. In addition, the Assessment calculates seven water supply and demand projection scenarios to the year 2025.</small>	Tucson Active Management Area

DRAFT Demand and Supply Assessment	January 2011
<small>This Assessment is a compilation and study of historical water demand and supply characteristics for the Prescott AMA from the year 1985 through 2006. In addition, the Assessment calculates seven water supply and demand projection scenarios to the year 2025.</small>	Prescott Active Management Area

[Source: 2010 Supply and Demand Assessments](#)

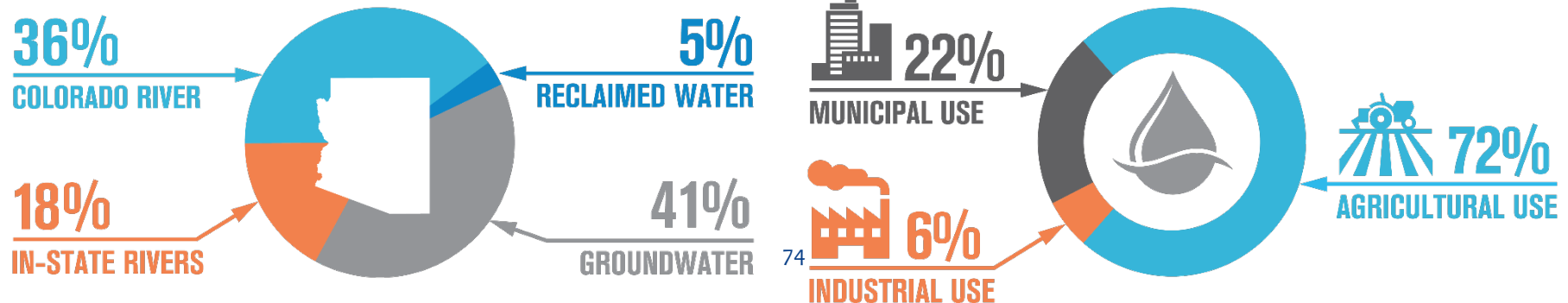
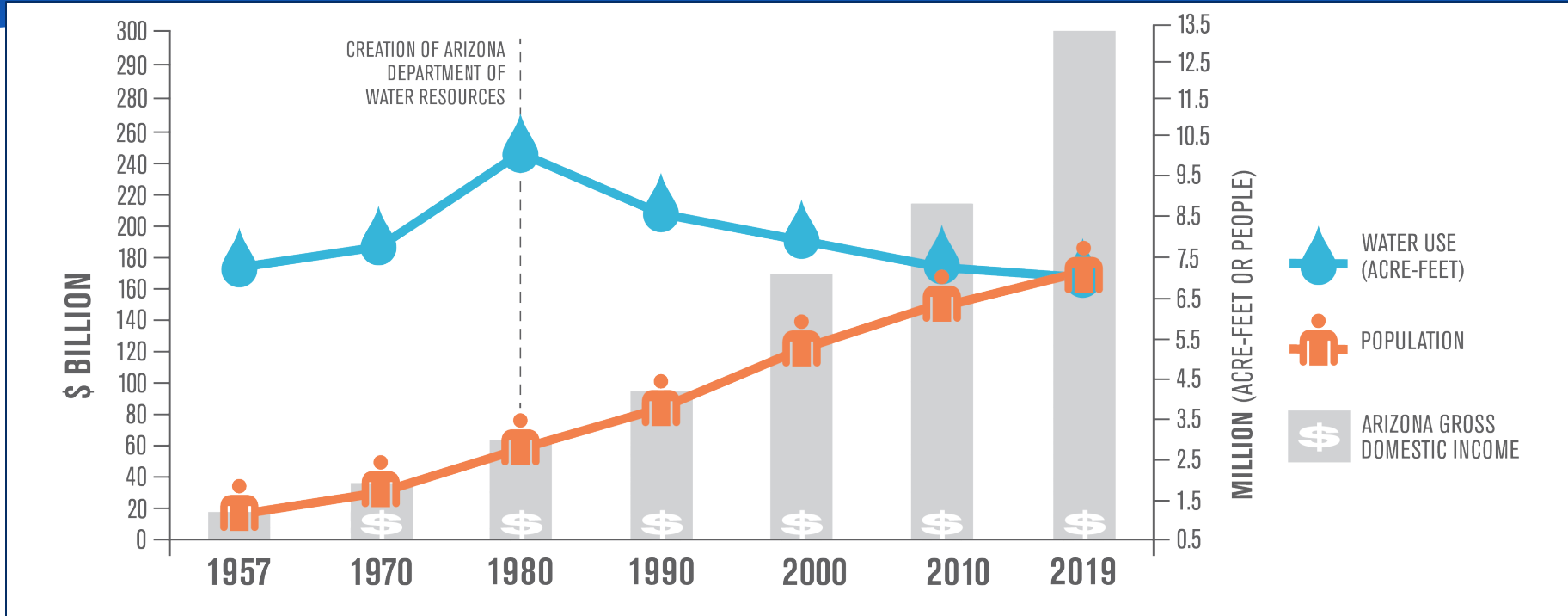
ADWR Data Compilation





Statewide Water Use Estimates

(2019)



Timeline: Supply & Demand Analysis

- * Present – December 2022
 - * Hiring/Training Staff
 - * Developing initial datasets
 - * Developing initial assumptions
 - * Identify initial basins for analysis
- * CY 2023
 - * Analyses for initial basins
 - * Reports due December 1, 2023 (and December 1 of each year thereafter)



Considerations for Scenarios & Assumptions

Supply

- * Treatment of water types/categories
 - * Source
 - * Current Utilization
 - * Additional Supply
- * Definition of Imbalance
- * Shortage Scenarios

Demand

- * Treatment of Various Sectors/Water Uses
 - * Data availability
 - * Methods for estimates
- * Impact of Conservation Programs and/or Curtailments
- * Impact of Population Change



“In Arizona, we’re going to have to make tough policy choices about water management. We’ll have to make choices about which aspects of our lifestyle we can give up and which we will maintain.”

ADWR Director Tom Buschatzke



Questions?

John Riggins
Statewide Planning Manager

Phone: 602-771-8742

Email: jrriggins@azwater.gov



PROTECTING
ARIZONA'S WATER SUPPLIES
for **CURRENT & FUTURE GENERATIONS**

Meeting Agenda

1. Call to Order – Welcome & Introductions – *Chair*
2. Meeting Logistics – *Kennedy Shepard, ADWR*
3. Colorado River Update – *James Heffner, ADWR*
James will provide an update on Colorado River hydrology.
4. Arizona Water Bank Authority Preliminary 2023 Plan of Operation – *Virginia O’Connell, AWBA*
Virginia will present the AWBA 2023 Preliminary Plan of Operation.
5. Groundwater Withdrawal Fee Recommendation & WMAP
 - a. Review withdrawal fee rates and money collected in past five years, WMAP projects, and remaining balance – *Melissa Sikes, ADWR*
 - b. Discuss and recommend to ADWR Director groundwater withdrawal fee rates for reporting year 2022 - *Council*
6. WMAP Project Update and Funding Renewal Request – *Renewal of Contract #2021-3144: Jennifer Salcido, Natural Resources Education Center, Eats Maricopa Natural Resource Conservation District.*
The council will hear an update and discuss a request for a renewal of WMAP funding. Based upon such discussion, the Council may vote to make a recommendation to the director with respect to the proposed action.
7. Overdraft and the Management Goal in the Pinal AMA – *Amanda Long, ADWR*
Amanda will present on overdraft in the Pinal AMA using the method described in a recently published report assessing each AMA’s progress towards its management goal.
8. Statewide Planning Updates – *John Riggins, ADWR*
9. Call to the Council – *Council*
10. Call to the Public – *Chair*
11. Adjournment - *Chair*



Meeting Agenda

1. Call to Order – Welcome & Introductions – *Chair*
2. Meeting Logistics – *Kennedy Shepard, ADWR*
3. Colorado River Update – *James Heffner, ADWR*
James will provide an update on Colorado River hydrology.
4. Arizona Water Bank Authority Preliminary 2023 Plan of Operation – *Virginia O’Connell, AWBA*
Virginia will present the AWBA 2023 Preliminary Plan of Operation.
5. Groundwater Withdrawal Fee Recommendation & WMAP
 - a. Review withdrawal fee rates and money collected in past five years, WMAP projects, and remaining balance – *Melissa Sikes, ADWR*
 - b. Discuss and recommend to ADWR Director groundwater withdrawal fee rates for reporting year 2022 - *Council*
6. WMAP Project Update and Funding Renewal Request – *Renewal of Contract #2021-3144: Jennifer Salcido, Natural Resources Education Center, Eats Maricopa Natural Resource Conservation District.*
The council will hear an update and discuss a request for a renewal of WMAP funding. Based upon such discussion, the Council may vote to make a recommendation to the director with respect to the proposed action.
7. Overdraft and the Management Goal in the Pinal AMA – *Amanda Long, ADWR*
Amanda will present on overdraft in the Pinal AMA using the method described in a recently published report assessing each AMA’s progress towards its management goal.
8. Statewide Planning Updates – *John Riggins, ADWR*
9. Call to the Council – *Council*
10. Call to the Public – *Chair*
11. Adjournment - *Chair*



Meeting Agenda

1. Call to Order – Welcome & Introductions – *Chair*
2. Meeting Logistics – *Kennedy Shepard, ADWR*
3. Colorado River Update – *James Heffner, ADWR*
James will provide an update on Colorado River hydrology.
4. Arizona Water Bank Authority Preliminary 2023 Plan of Operation – *Virginia O’Connell, AWBA*
Virginia will present the AWBA 2023 Preliminary Plan of Operation.
5. Groundwater Withdrawal Fee Recommendation & WMAP
 - a. Review withdrawal fee rates and money collected in past five years, WMAP projects, and remaining balance – *Melissa Sikes, ADWR*
 - b. Discuss and recommend to ADWR Director groundwater withdrawal fee rates for reporting year 2022 - *Council*
6. WMAP Project Update and Funding Renewal Request – *Renewal of Contract #2021-3144: Jennifer Salcido, Natural Resources Education Center, Eats Maricopa Natural Resource Conservation District.*
The council will hear an update and discuss a request for a renewal of WMAP funding. Based upon such discussion, the Council may vote to make a recommendation to the director with respect to the proposed action.
7. Overdraft and the Management Goal in the Pinal AMA – *Amanda Long, ADWR*
Amanda will present on overdraft in the Pinal AMA using the method described in a recently published report assessing each AMA’s progress towards its management goal.
8. Statewide Planning Updates – *John Riggins, ADWR*
9. Call to the Council – *Council*
10. Call to the Public – *Chair*
11. Adjournment - *Chair*

