



Drought Monitoring Technical  
Committee Report  
to the  
Arizona Interagency  
Coordinating Group

May 14, 2026

---

Erinanne Saffell, Ph.D.  
Arizona State Climatologist

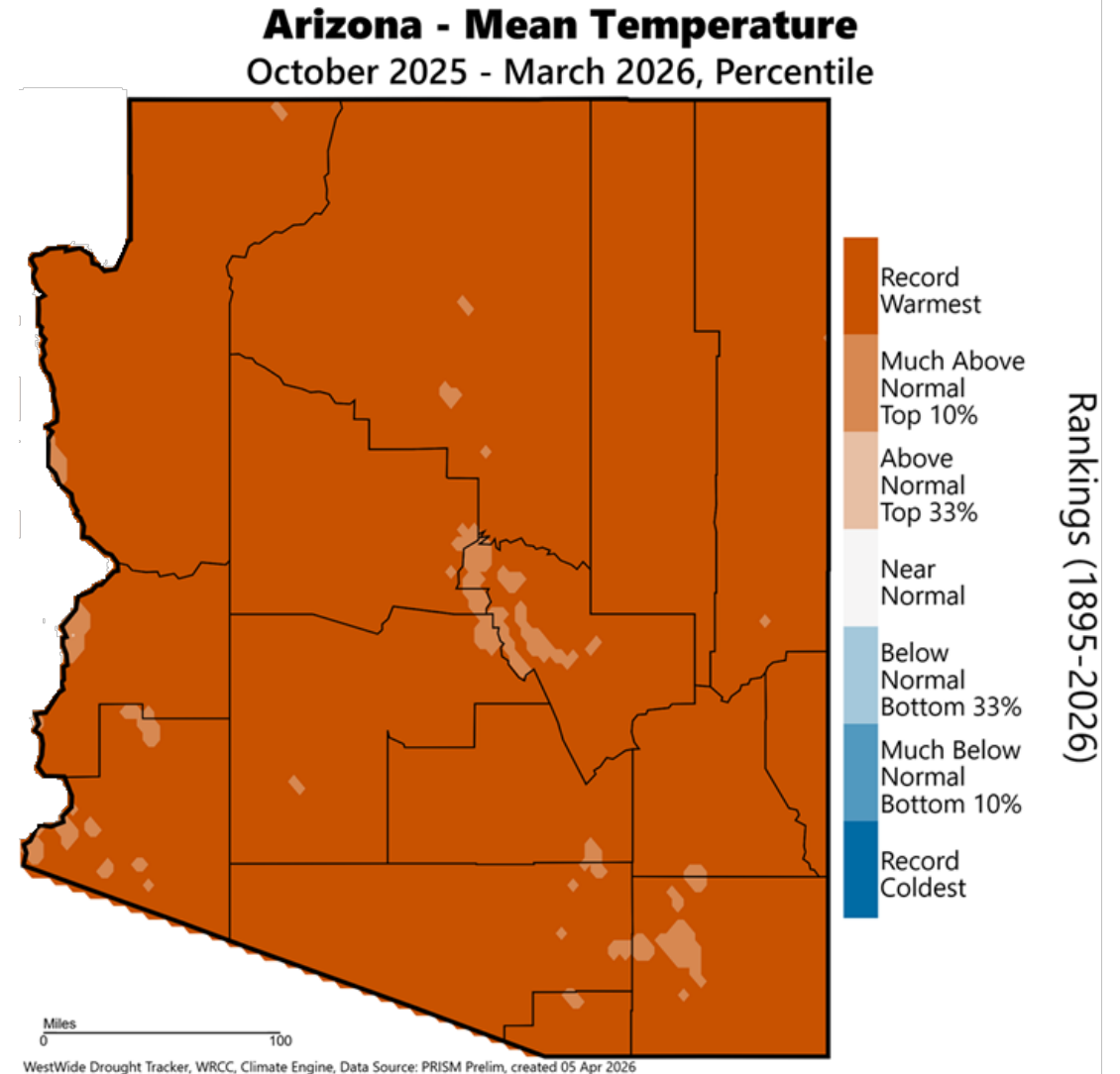
# Record temperatures October 2025 to March 2026

Temp: 55.2° Rank: hottest Anomaly: +7.0°F

AZ Monthly Average Temperature October 2025 – March 2026	
<small>Preliminary data from NOAA/NCEI as of 4/12/26</small>	
Month	Rank
October 2025	20 <sup>th</sup> hottest (tie)
November 2025	4 <sup>th</sup> hottest
December 2025	Hottest
January 2026	5 <sup>th</sup> hottest (tie)
February 2026	Hottest
March 2026	Hottest

Record coldest	Top 10% coldest	Top 33% coldest	Normal	Top 33% hottest	Top 10% hottest	Record hottest
----------------	-----------------	-----------------	--------	-----------------	-----------------	----------------

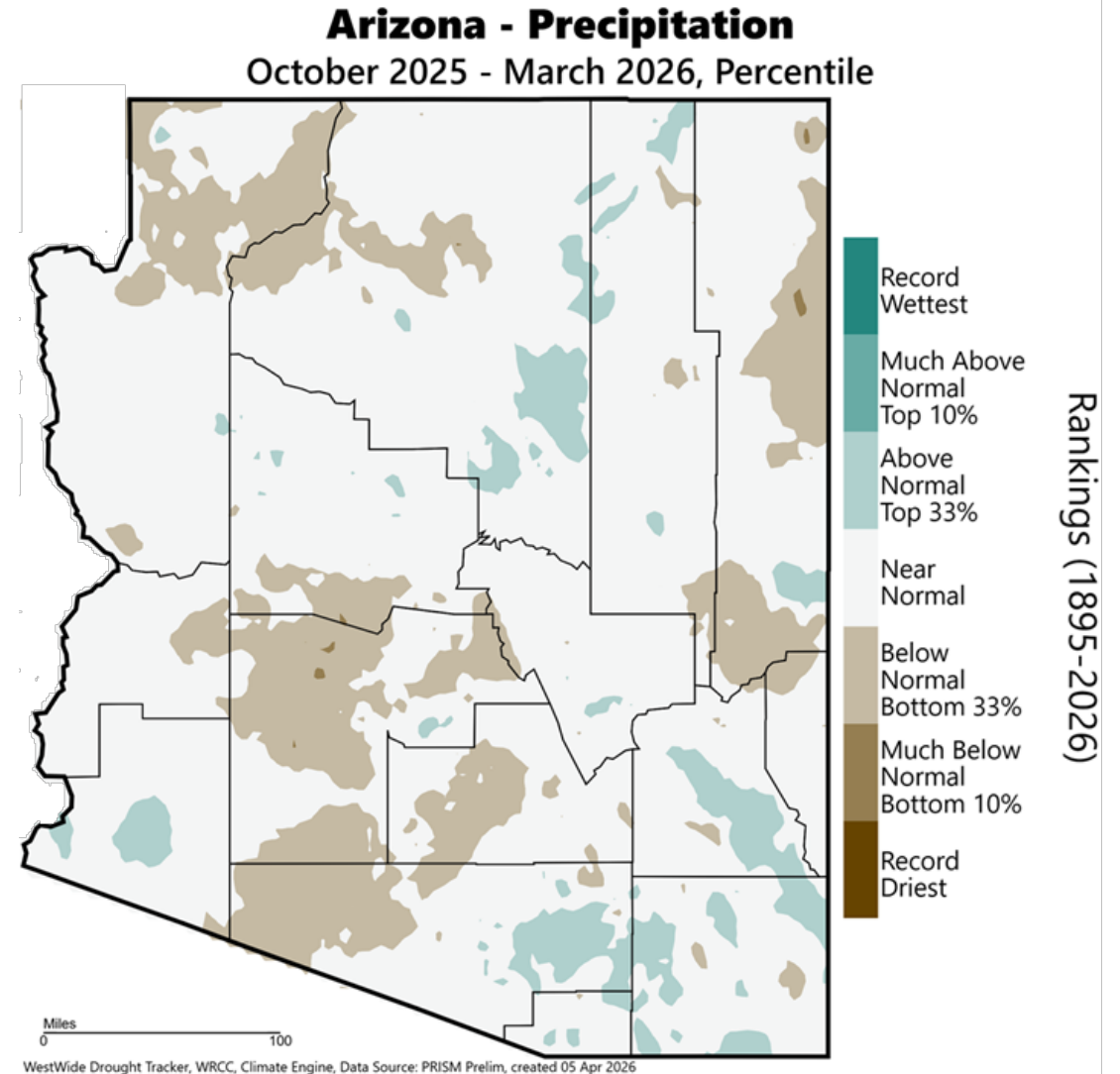


# Precipitation below average October 2025 to March 2026

Total: 5.29° Rank: 59<sup>th</sup> driest Anomaly: -0.79"

AZ Monthly Precipitation October 2025 – March 2026	
<small>Preliminary data from NOAA/NCEI as of 4/12/26</small>	
Month	Rank
October 2025	20 <sup>th</sup> wettest
November 2025	21 <sup>st</sup> wettest
December 2025	30 <sup>th</sup> driest
January 2026	66 <sup>th</sup> driest
February 2026	52 <sup>nd</sup> driest
March 2026	13 <sup>th</sup> driest

Record driest
Top 10% driest
Top 33% driest
Normal
Top 33% wettest
Top 10% wettest
Record wettest

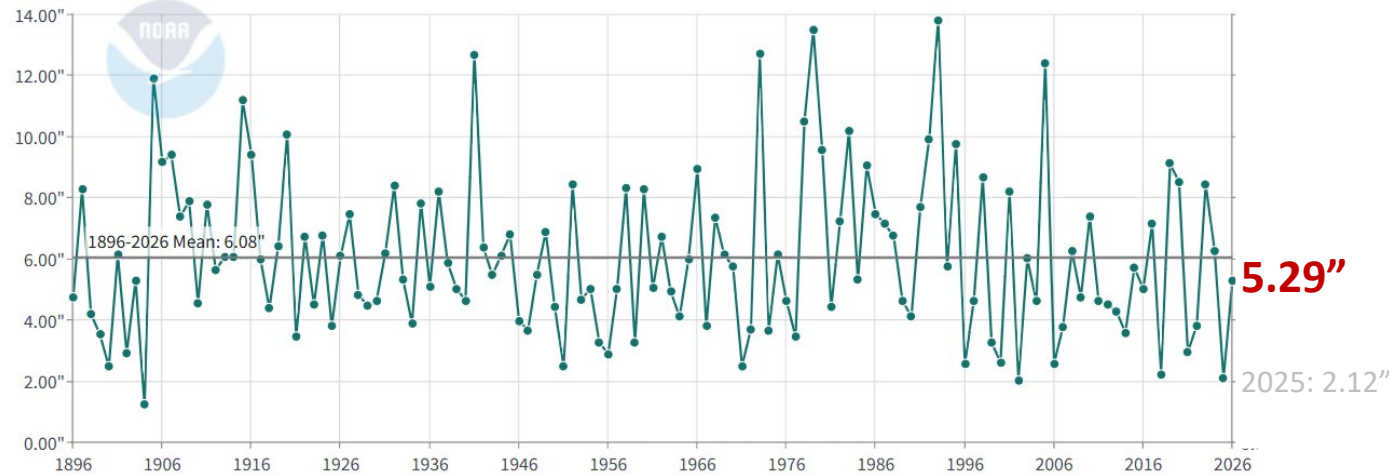


# WY2026: wet fall 2025 now lost in dry winter 2026

Water Year runs from Oct 1- Sep 30

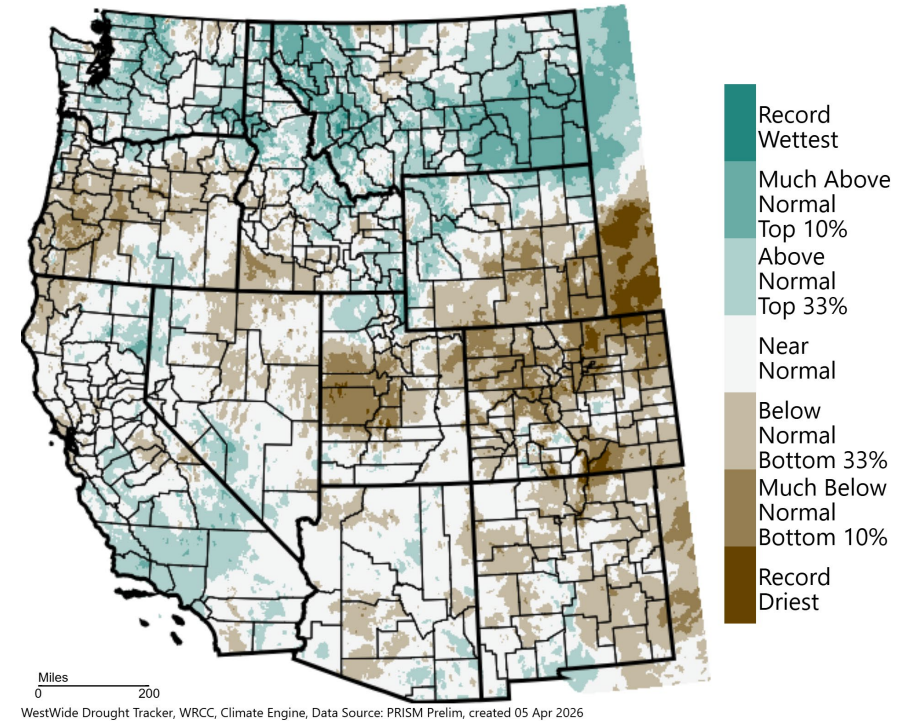
**WY2026 October-March:**  
 Statewide Total: 5.29"  
 Rank: 59<sup>th</sup> driest  
 Anomaly: -0.79"

**Arizona Precipitation**  
 October-March



Long-term average Oct-Mar: 6.08"  
 1994-2026 average Oct-Mar: 5.44"  
 Preliminary data from NOAA/NCEI as of 4/6/26

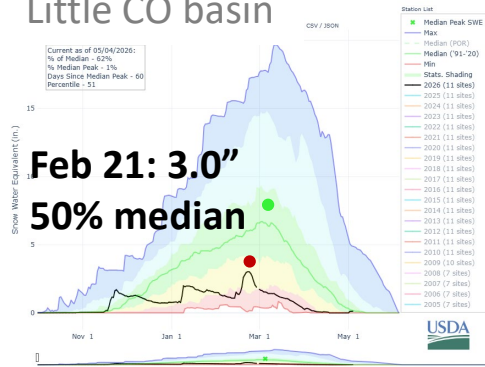
**Western United States - Precipitation**  
 October 2025 - March 2026, Percentile



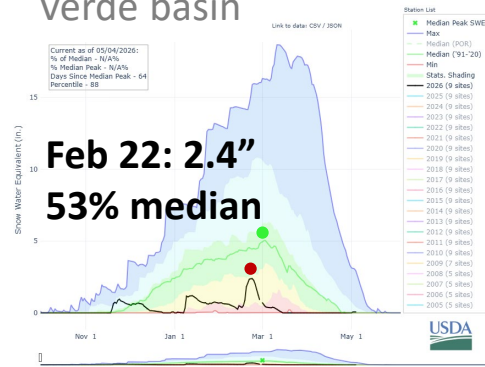
Rankings (1895-2026)

# Snow drought in AZ, Colorado Basin

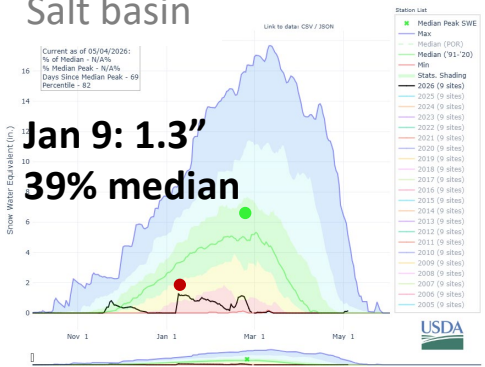
## Little CO basin



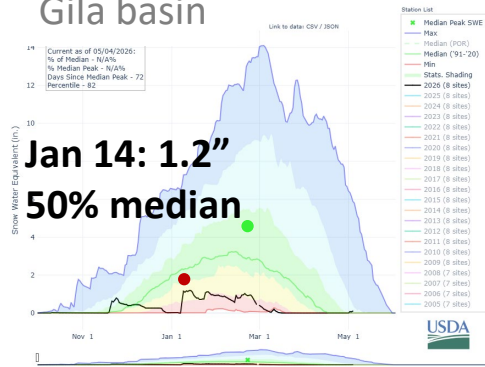
## Verde basin



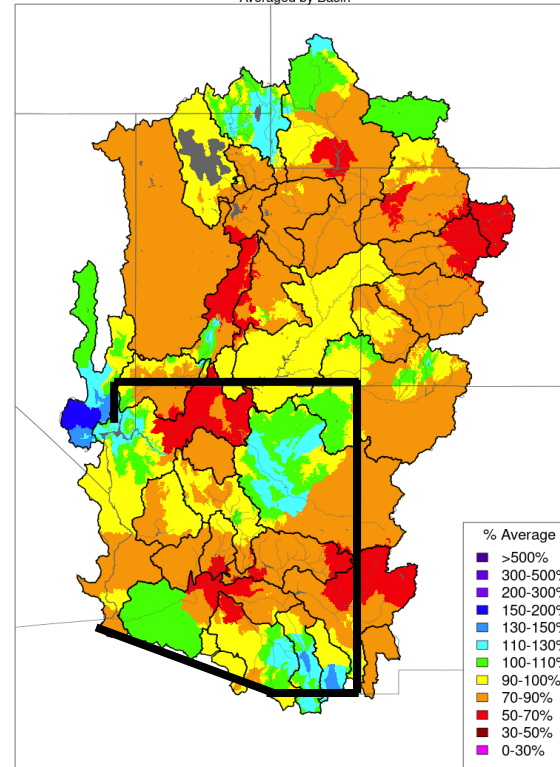
## Salt basin



## Gila basin

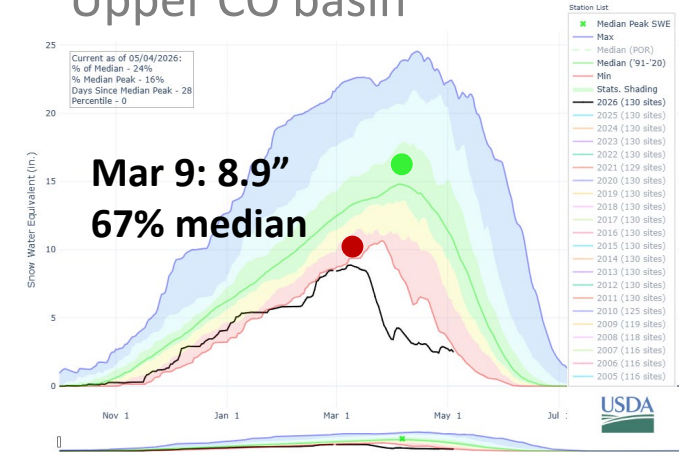


## Water Year Precipitation, October 2025 - April 2026 Averaged by Basin

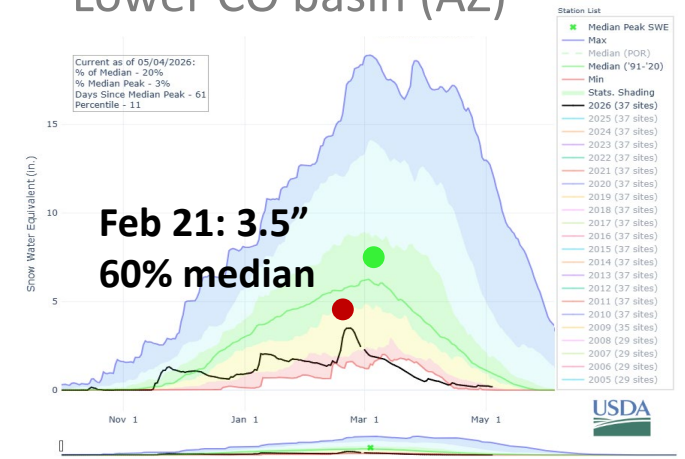


Prepared by NOAA, Colorado Basin River Forecast Center  
Salt Lake City, Utah, [www.cbrfc.noaa.gov](http://www.cbrfc.noaa.gov)

## Upper CO basin



## Lower CO basin (AZ)

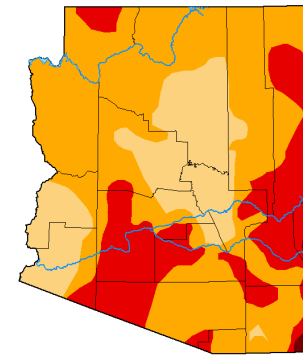


Snow water equivalent (SWE) to May 4, 2026

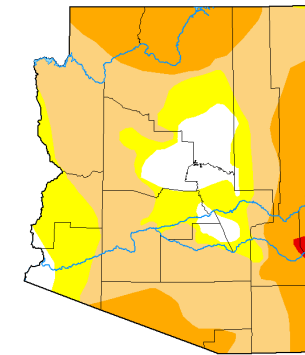
# Short-term drought advanced in spring 2026

## Arizona Short-Term Drought Water Year 2026 (October to April)

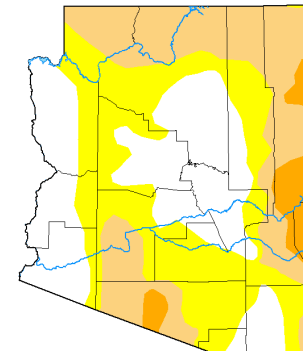
Arizona: percentage of change in short-term drought October 1, 2025 to April 30, 2026			
Category	1-Oct-25	30-Apr-26	Change (WY2026)
No Drought	0	3	+3
D0 - Abnormally Dry	0	12	+12
D1 - Moderate Drought	21	60	+39
D2 - Severe Drought	54	25	-29
D3 - Extreme Drought	24	0	-24
D4 - Exceptional Drought	1	0	-1



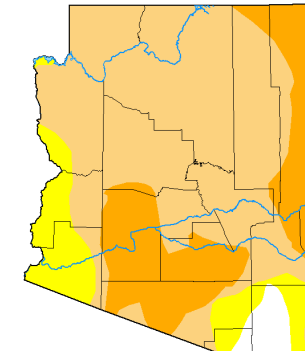
October 1, 2025



December 4, 2025



February 5, 2026



April 30, 2026



The Drought Monitor focuses on broad-scale conditions. Local conditions may vary. For more information on the Drought Monitor, go to <https://droughtmonitor.unl.edu/About.aspx>



@AZStateClimate

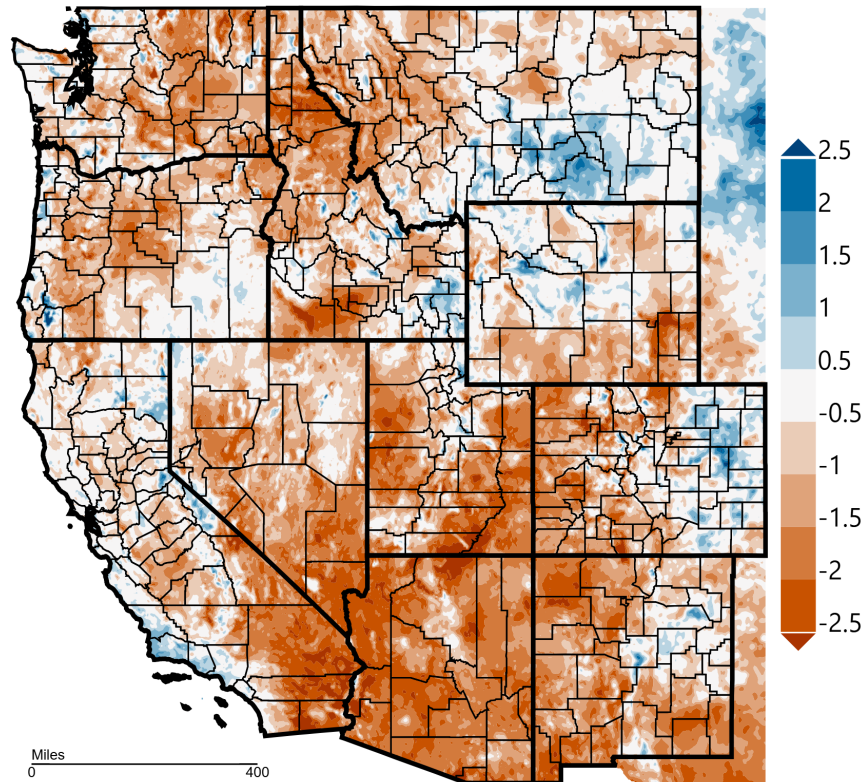


# 60-month SPEI deficits cover most of the Southwest

*Standardized Precipitation Evapotranspiration Index shows hot temperatures and dry conditions*

*Arizona's long-term drought since 1994*

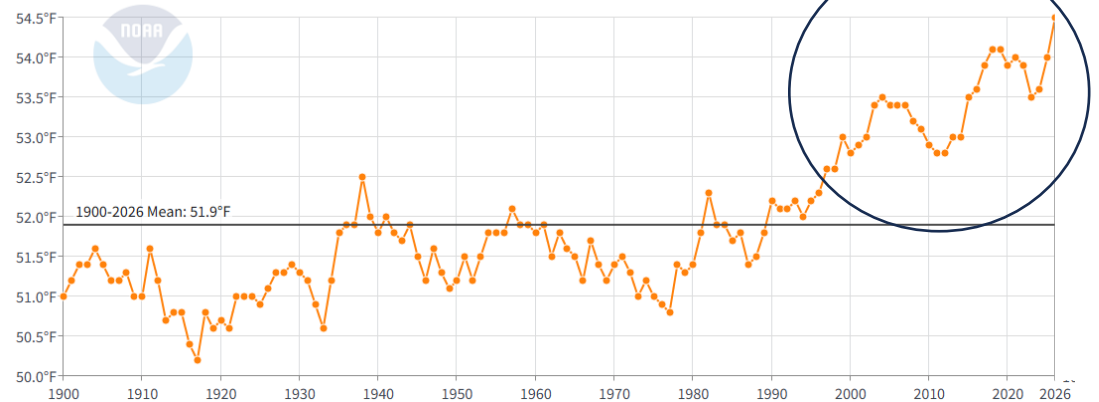
## Western United States - 60 Month SPEI March 2026



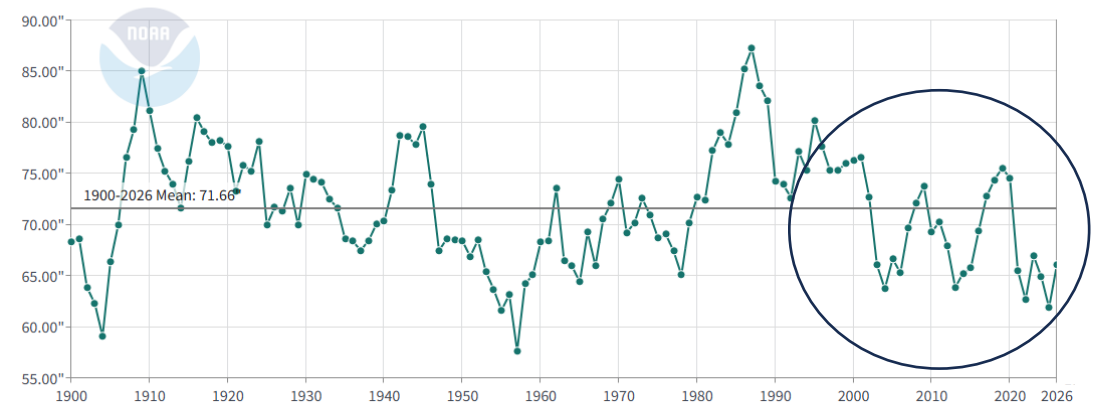
WestWide Drought Tracker, WRCC, Climate Engine, Data Source: PRISM Prelim, created 05 Apr 2026

SPEI60

### Southwest Average Temperature 60-Month Period Ending in March

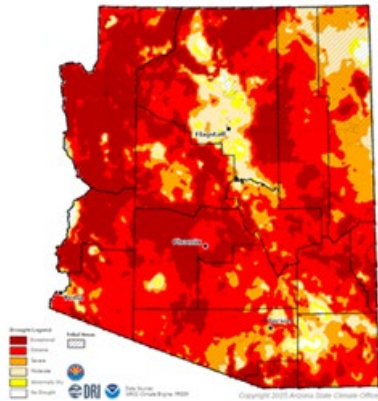


### Southwest Precipitation 60-Month Period Ending in March

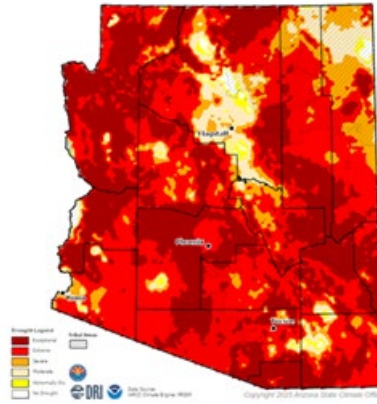


# Long-term deficits continue across Arizona

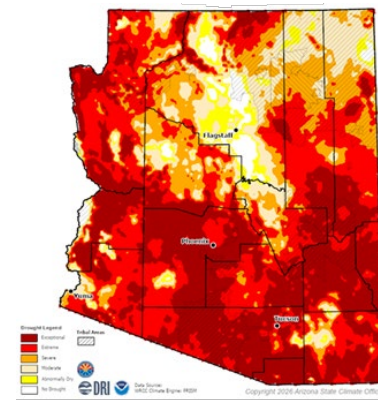
*SPEI 24-month, 36-month, 48-month averages*



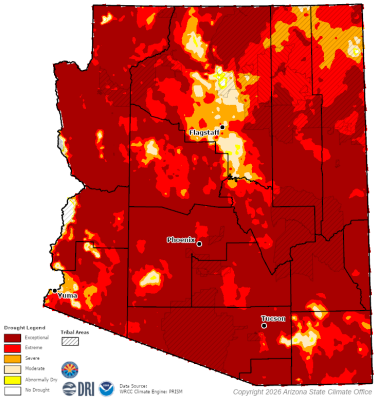
*April to June 2025*



*July to September 2025*



*October to December 2025*



*January to March 2026*

*48-month rankings*

**Arizona  
April 2022 to March 2026  
Hottest**



*Preliminary data from NOAA/NCEI as of 4/12/26*

**Arizona  
April 2022 to March 2026  
27<sup>th</sup> driest**



*Preliminary data from NOAA/NCEI as of 4/12/26*

# Thank you

Erinanne Saffell, Ph.D.

Arizona State Climatologist

Erinanne.Saffell@asu.edu

azclimate.asu.edu

@AZStateClimate

