

Drought Interagency Coordinating Group

Colorado River Basin Status Update

*James Heffner
Colorado River Management Section
Arizona Department of Water Resources*

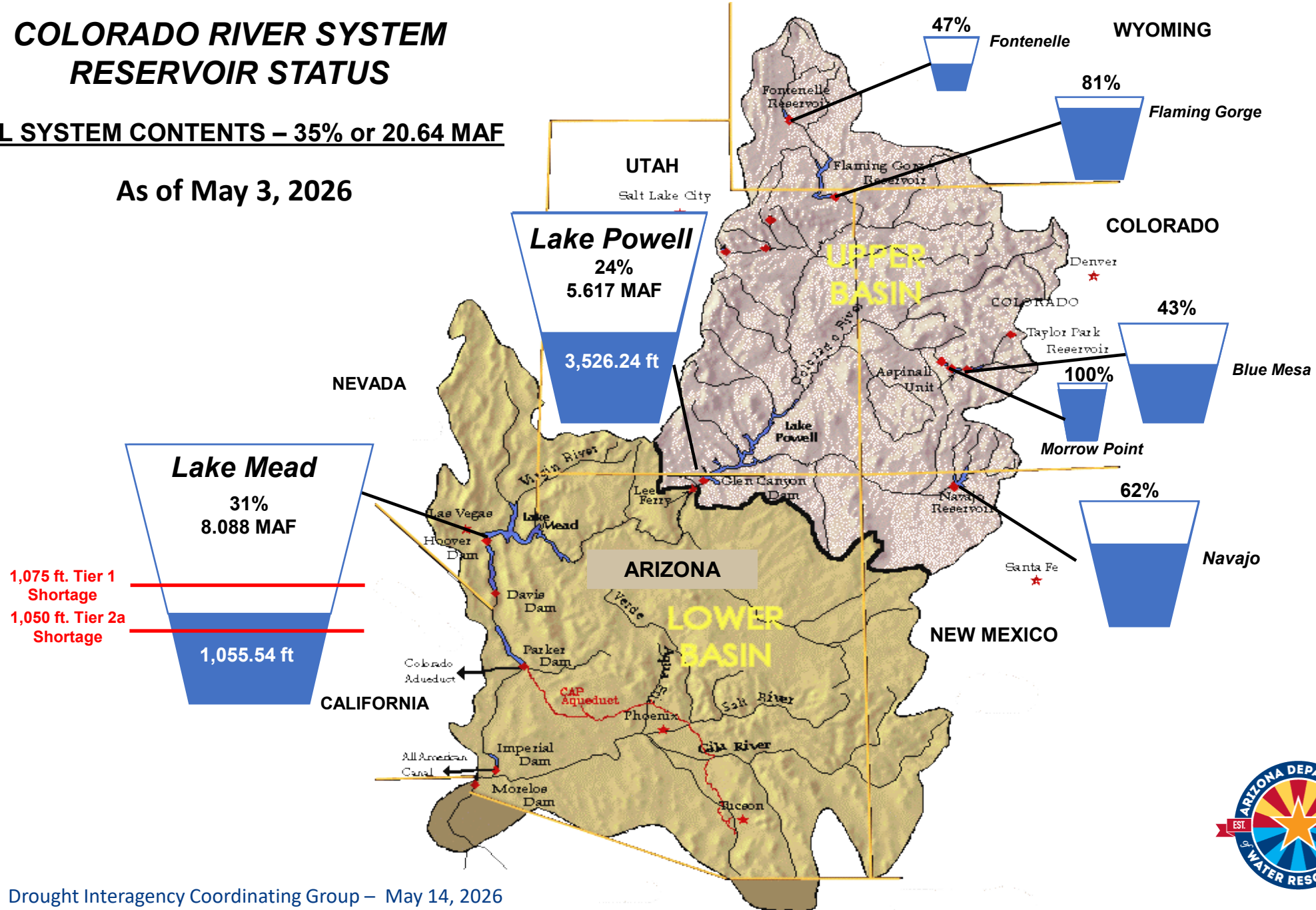
May 14, 2026



COLORADO RIVER SYSTEM RESERVOIR STATUS

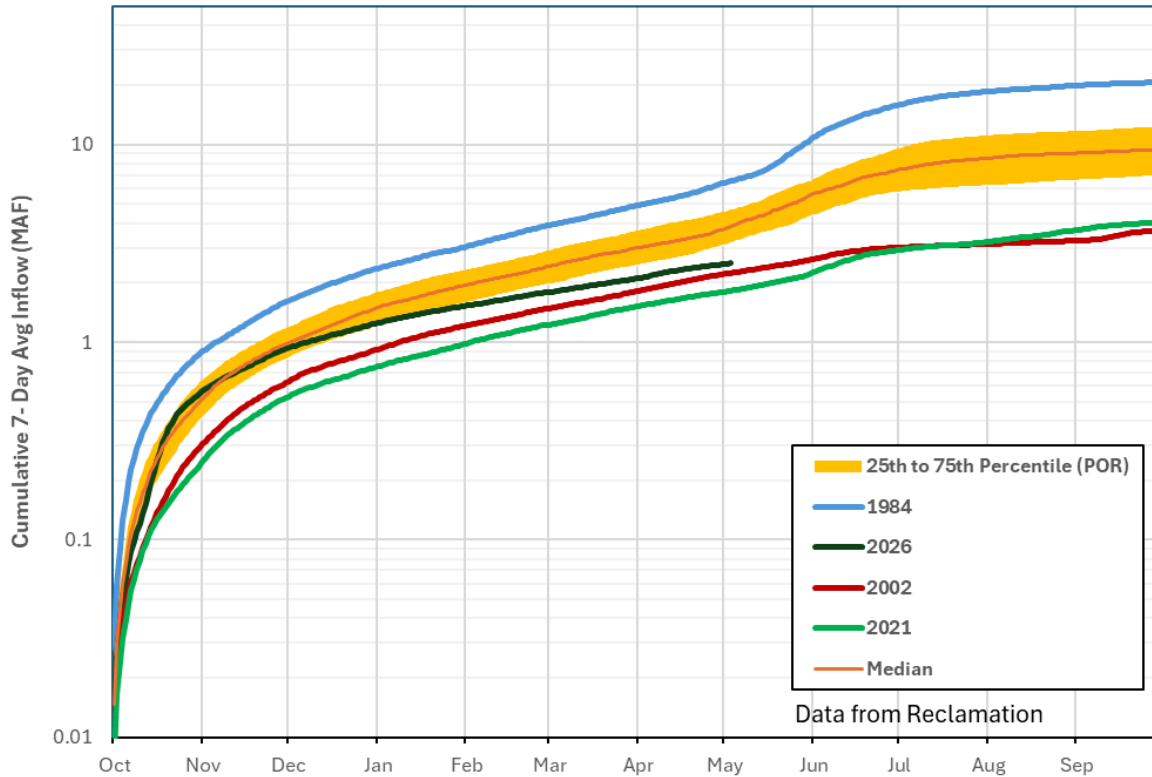
TOTAL SYSTEM CONTENTS – 35% or 20.64 MAF

As of May 3, 2026

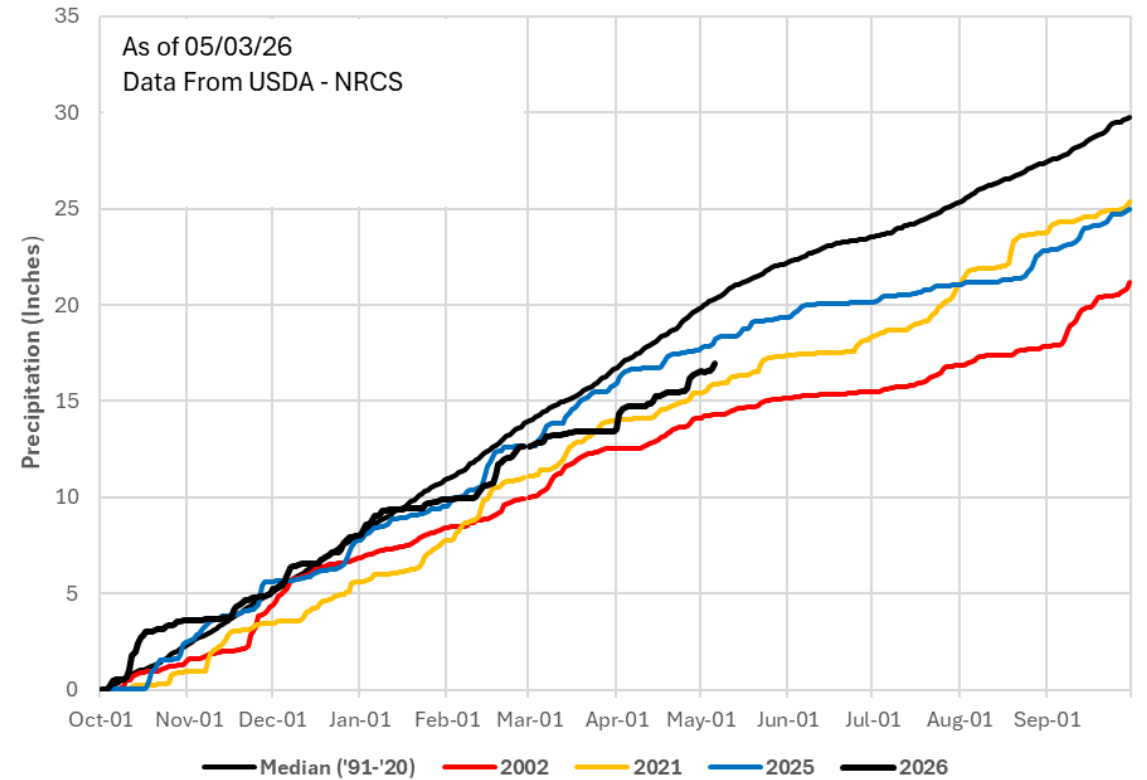


Inflow

Powell Cumulative 7-Day Average Inflow (MAF)

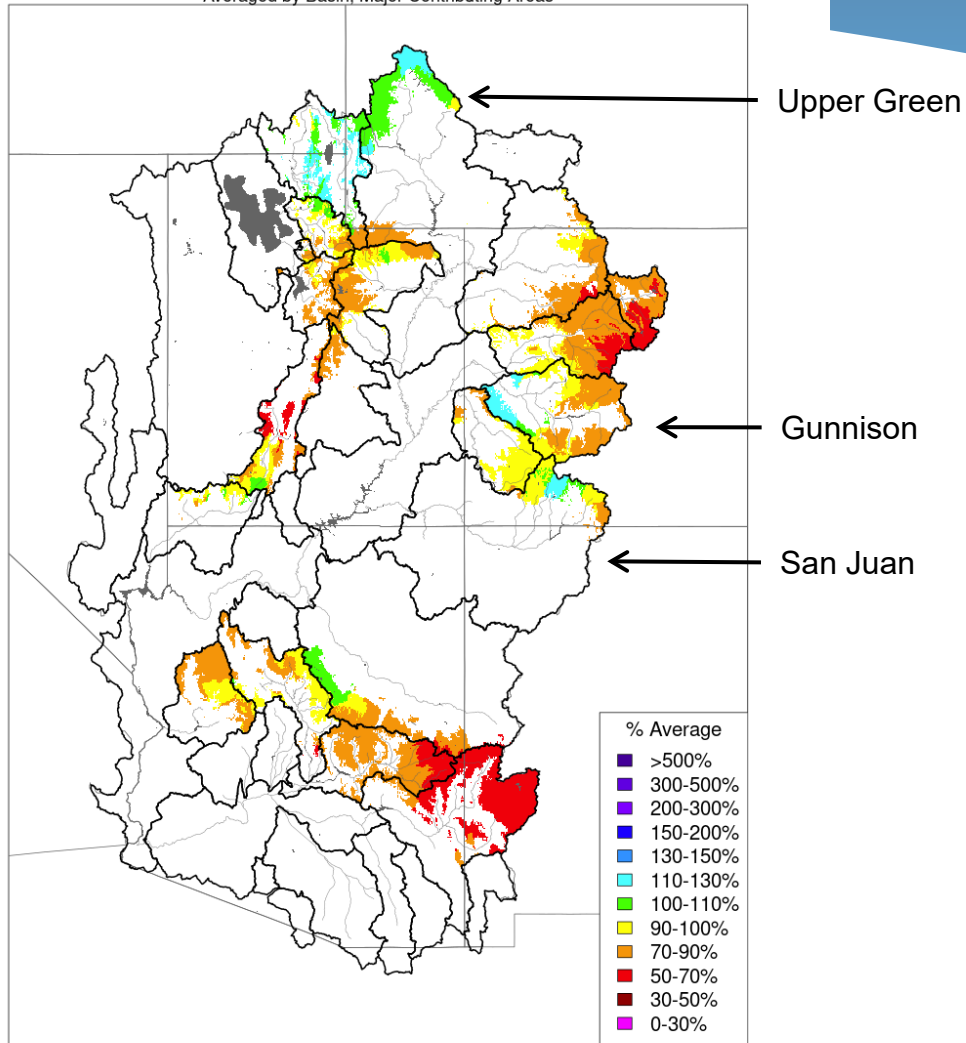


Colorado River Basin Above Lake Powell Precipitation



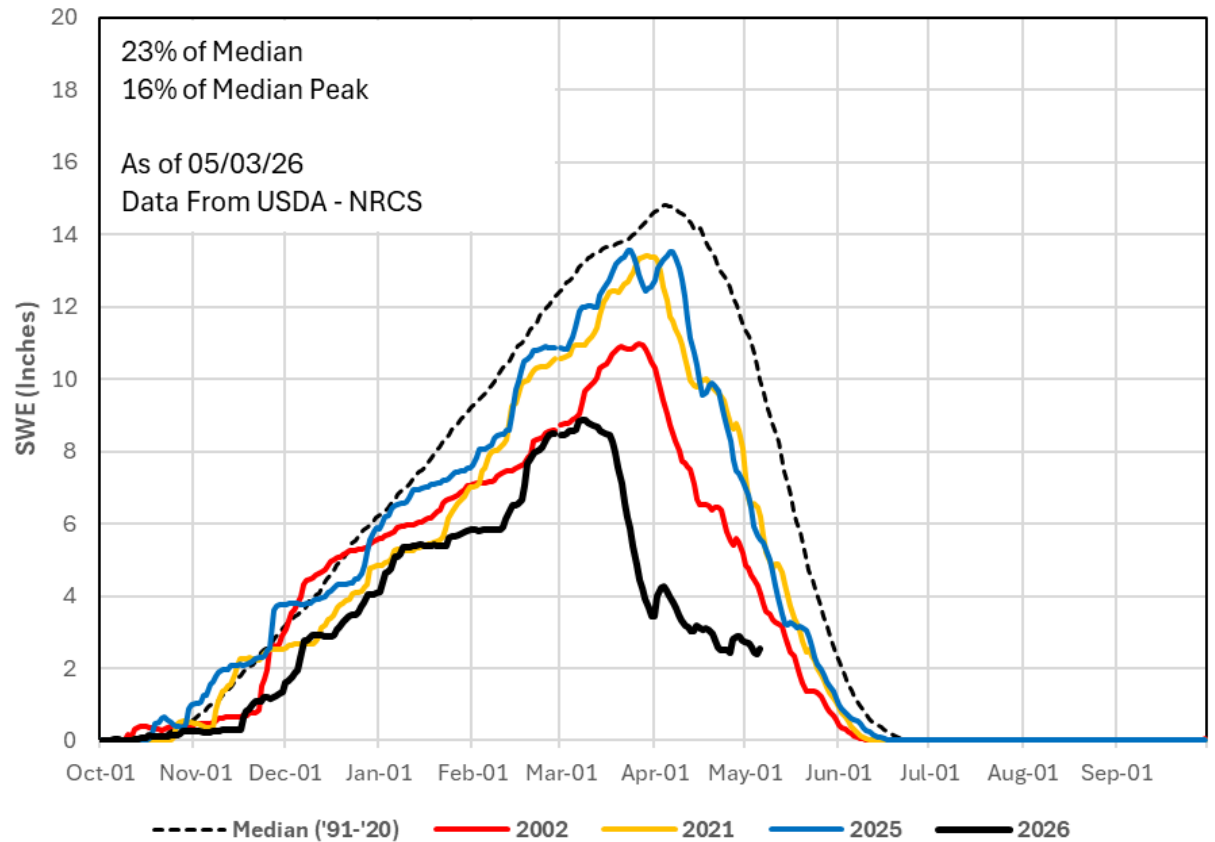
Precipitation

Water Year to Date Precipitation, October 01 - April 30 2026
Averaged by Basin, Major Contributing Areas



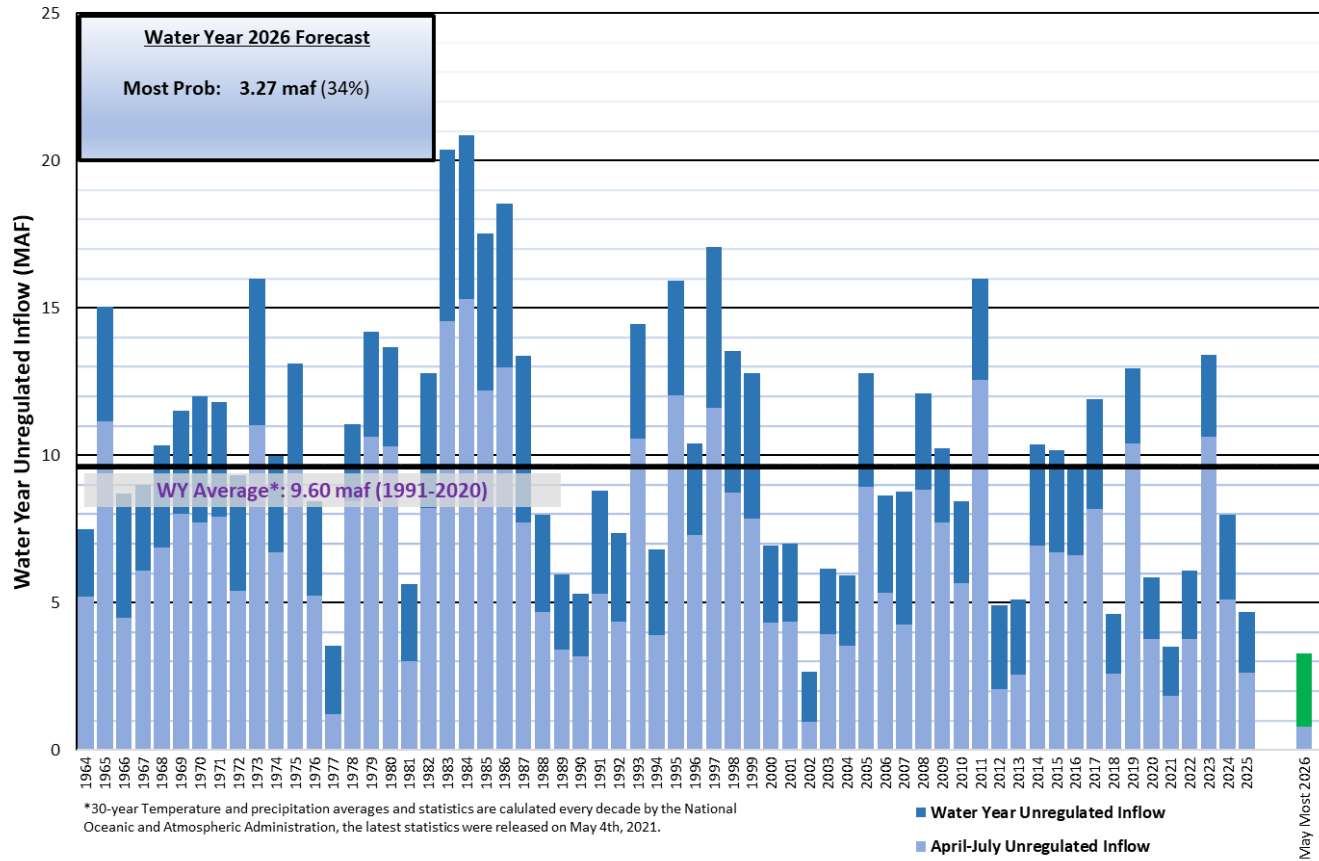
Prepared by NOAA, Colorado Basin River Forecast Center
Salt Lake City, Utah, www.cbrfc.noaa.gov

Colorado River Basin Above Lake Powell SWE



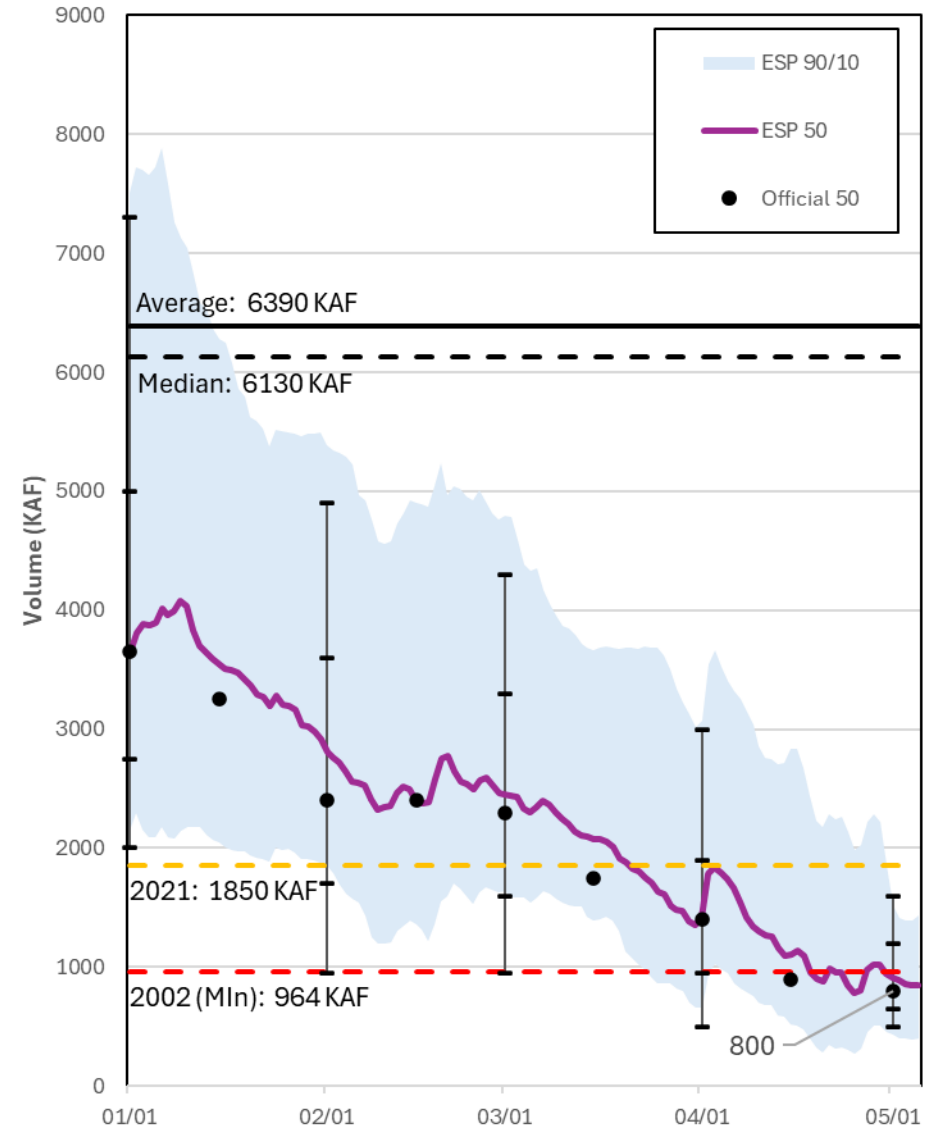
Runoff

Lake Powell Unregulated Inflow
Water Year 2026 Forecast (Issued May 2026)



*30-year Temperature and precipitation averages and statistics are calculated every decade by the National Oceanic and Atmospheric Administration, the latest statistics were released on May 4th, 2021.

2026 Water Supply Forecast - Colorado - Lake Powell, Glen Canyon Dam (GLDA3)

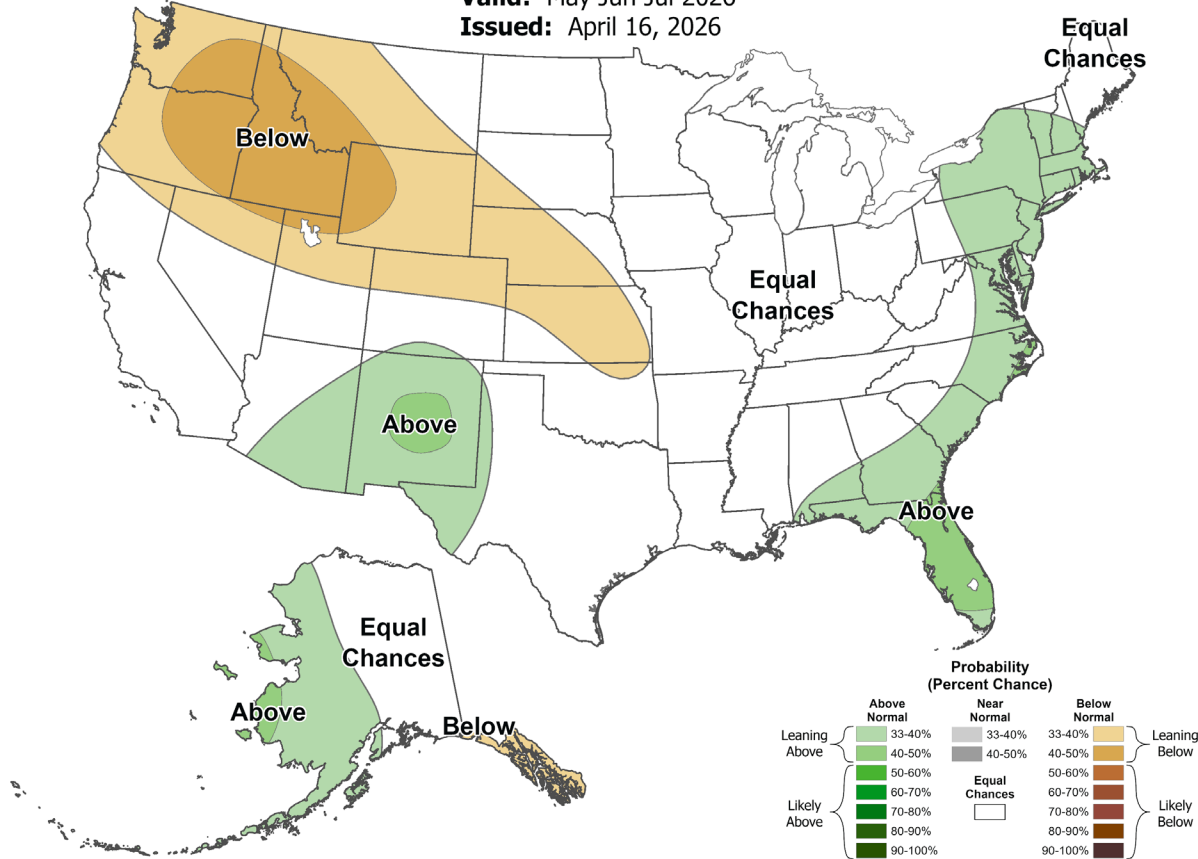


Seasonal Outlook



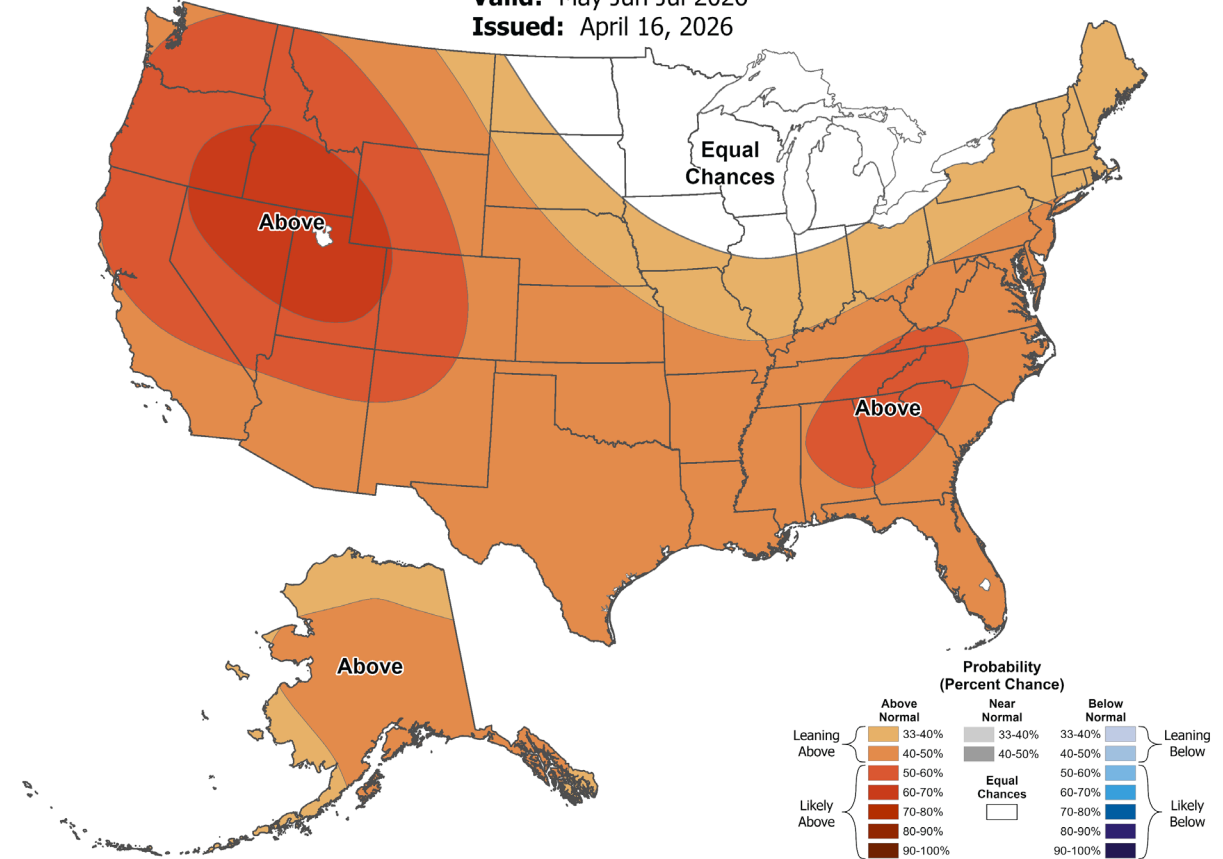
Seasonal Precipitation Outlook

Valid: May-Jun-Jul 2026
 Issued: April 16, 2026



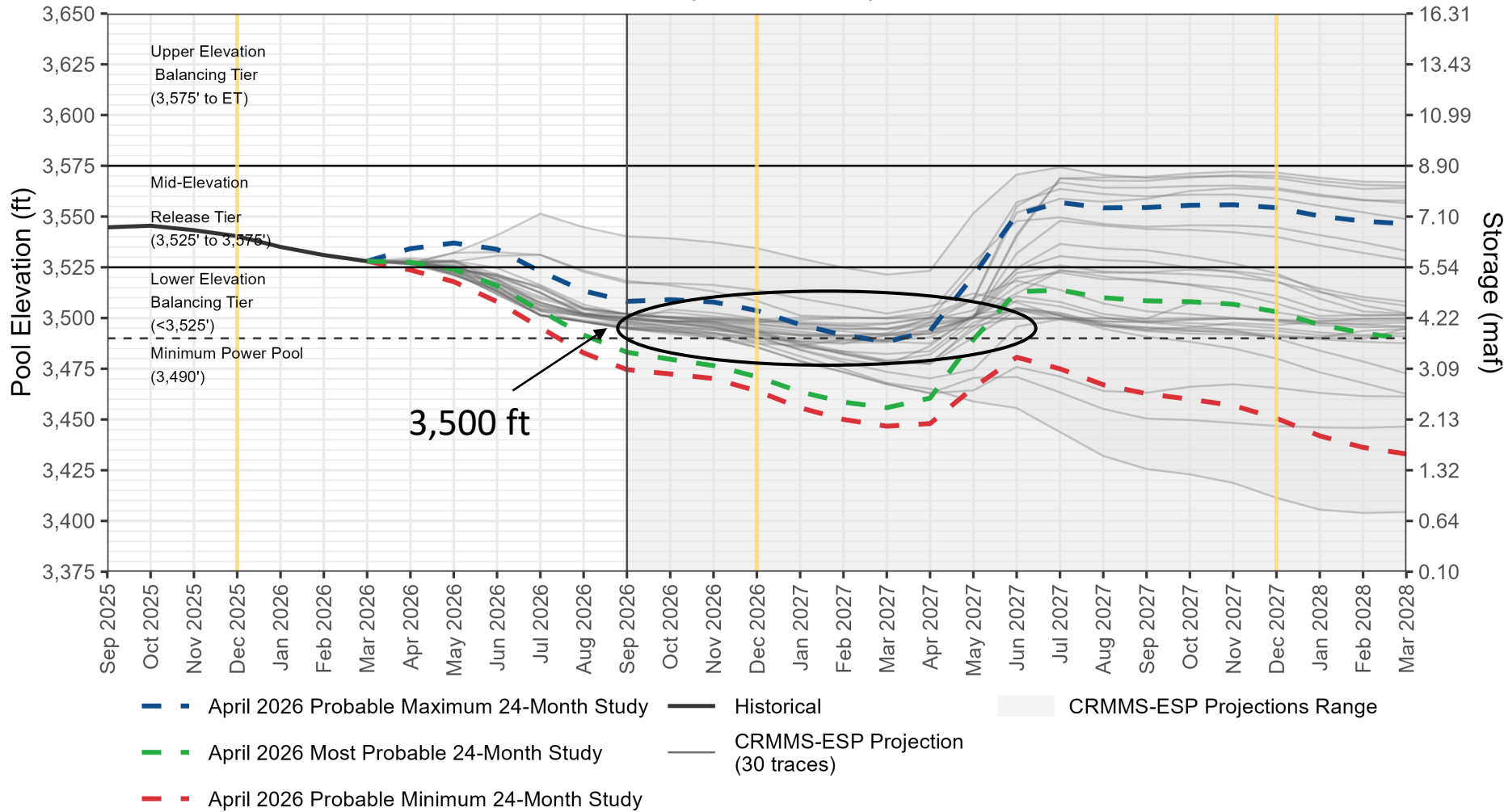
Seasonal Temperature Outlook

Valid: May-Jun-Jul 2026
 Issued: April 16, 2026



Lake Powell End-of-Month Elevations^{1,2}

CRMMS Projections from April 2026



End of CY 2026 Projections

Most Probable:
3,471.06 feet (13% full)

Probable Min:
3,464.07 feet

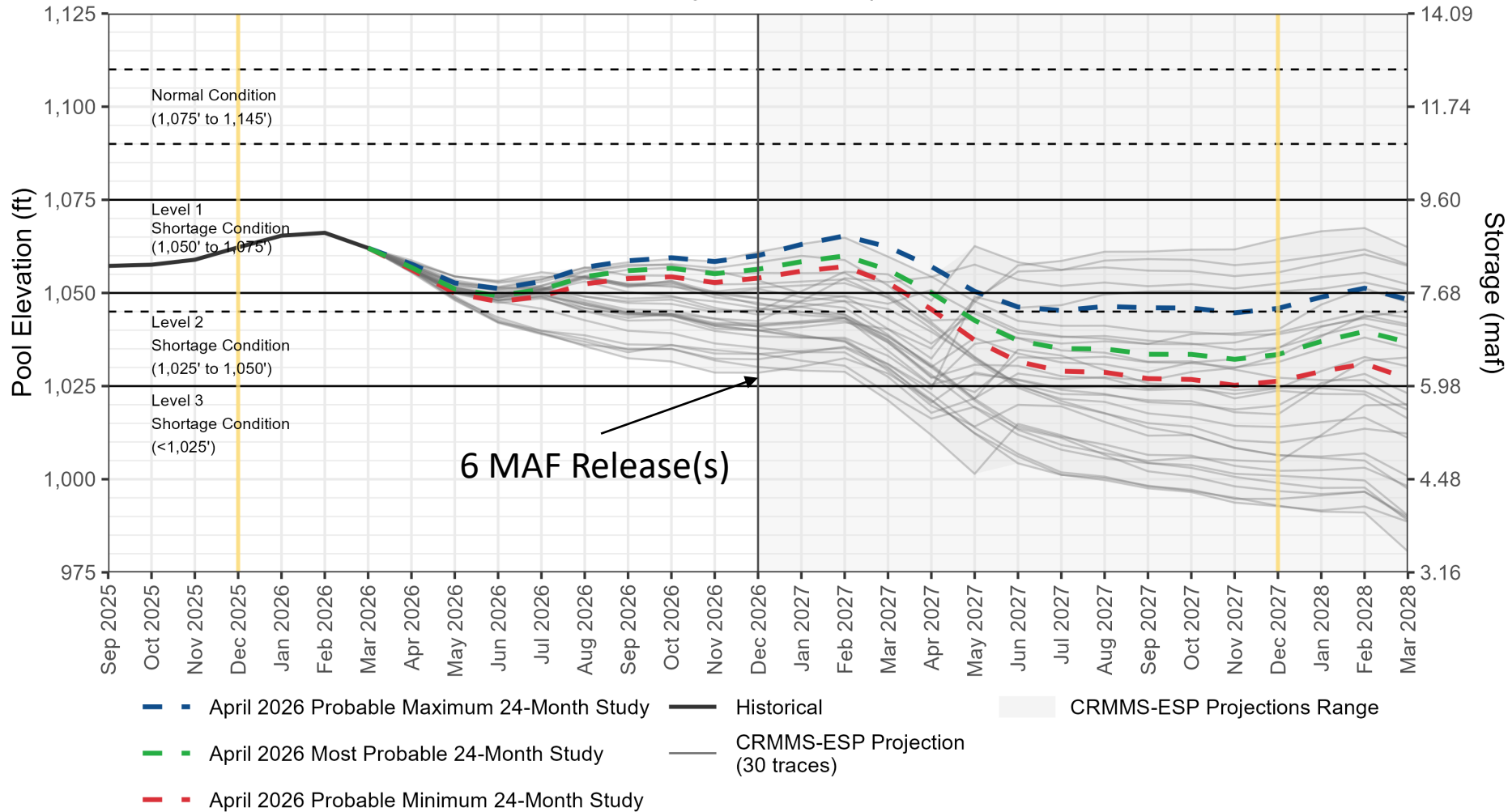
¹For modeling purposes, simulated years beyond 2026 assume a continuation of the 2007 Interim Guidelines including the 2024 Supplement to the 2007 Interim Guidelines (no additional SEIS conservation is assumed to occur after 2026), the 2019 Colorado River Basin Drought Contingency Plans, and Minute 323 including the Binational Water Scarcity Contingency Plan. With the exception of certain provisions related to ICS recovery and Upper Basin Demand management, operations under these agreements are in effect through 2026.

²For modeling purposes, this graphic contains existing operational assumptions built into CRMMS that constrain Glen Canyon Dam releases to prevent Lake Powell from falling below elevation 3,500 feet. As described in Sections 6.E and 7.B of the Supplement to the 2007 Colorado River Interim Guidelines, Reclamation will consider all tools that are available to avoid Lake Powell elevation declining below 3,500 feet and any actual constraining of Lake Powell releases is subject to appropriate consultation between Reclamation and other Basin partners with respect to the implementation of potential releases. The Probable Minimum also shows Lake Powell elevations without any Glen Canyon Dam release constraints so Reclamation and Basin partners can assess the hydrology and be prepared to discuss appropriate solutions.



Lake Mead End-of-Month Elevations^{1,2}

CRMMS Projections from April 2026



¹For modeling purposes, simulated years beyond 2026 assume a continuation of the 2007 Interim Guidelines including the 2024 Supplement to the 2007 Interim Guidelines (no additional SEIS conservation is assumed to occur after 2026), the 2019 Colorado River Basin Drought Contingency Plans, and Minute 323 including the Binational Water Scarcity Contingency Plan. With the exception of certain provisions related to ICS recovery and Upper Basin Demand management, operations under these agreements are in effect through 2026.

²For modeling purposes, this graphic contains existing operational assumptions built into CRMMS that constrain Glen Canyon Dam releases to prevent Lake Powell from falling below elevation 3,500 feet. As described in Sections 6.E and 7.B of the Supplement to the 2007 Colorado River Interim Guidelines, Reclamation will consider all tools that are available to avoid Lake Powell elevation declining below 3,500 feet and any actual constraining of Lake Powell releases is subject to appropriate consultation between Reclamation and other Basin partners with respect to the implementation of potential releases. The Probable Minimum also shows Lake Powell elevations without any Glen Canyon Dam release constraints so Reclamation and Basin partners can assess the hydrology and be prepared to discuss appropriate solutions.

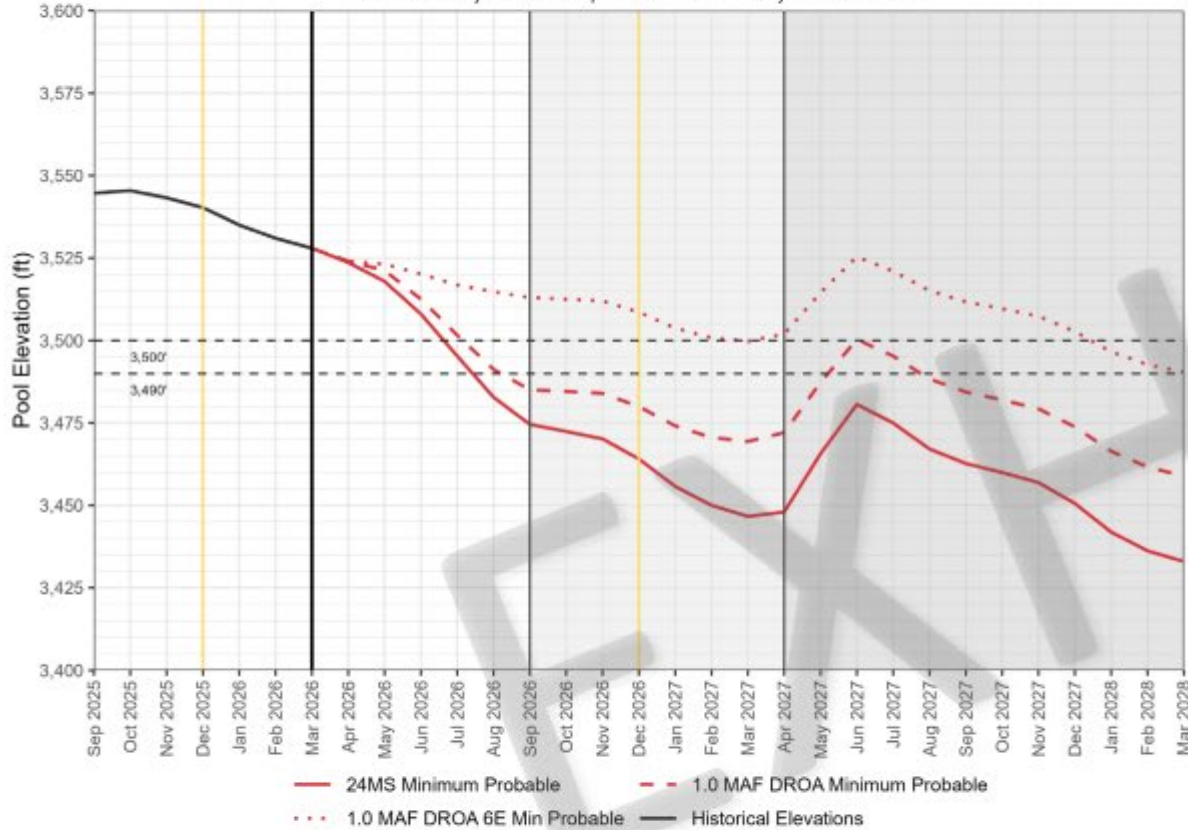


DROA & 6E Exhibit Model Results

1 maf Release from UIU and 6.0 maf Release from Powell in WY 2026

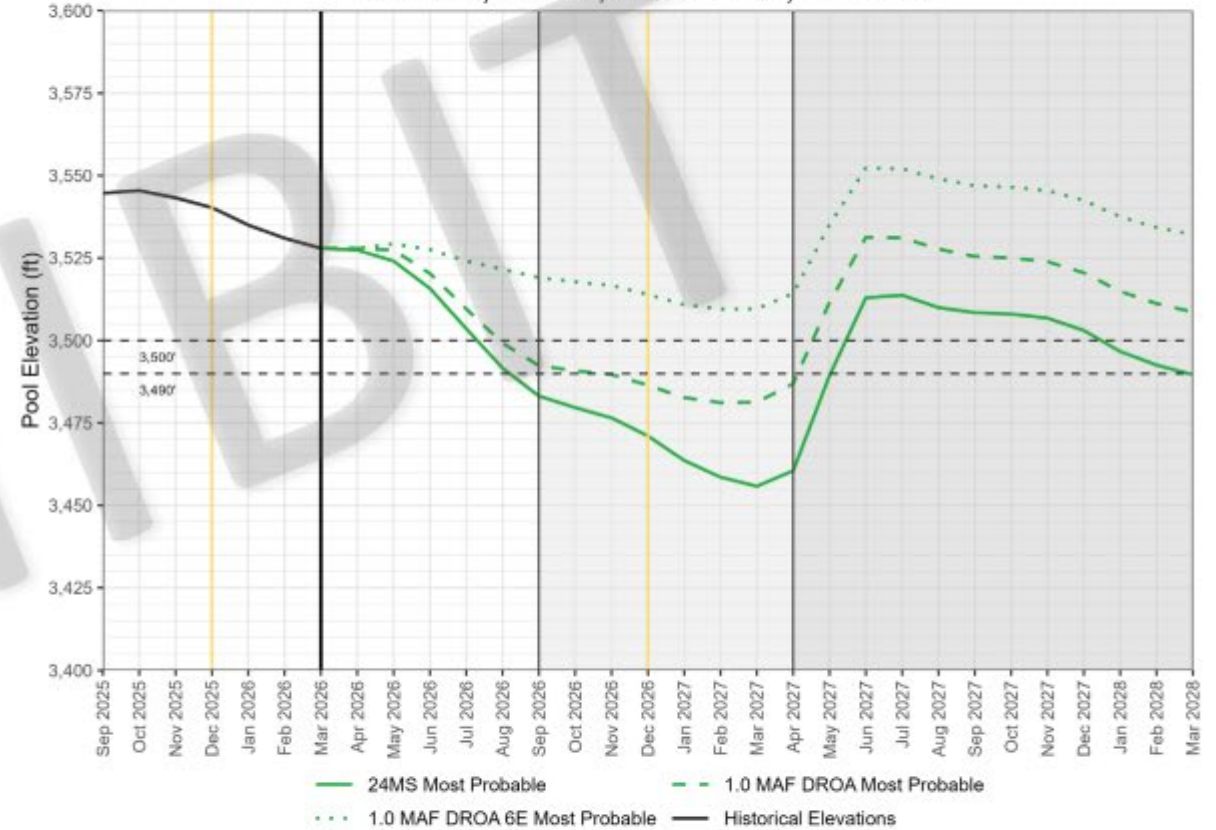
Lake Powell End-of-Month Elevations

Provisional Projections from April 2026 24-Month Study Inflow Scenarios



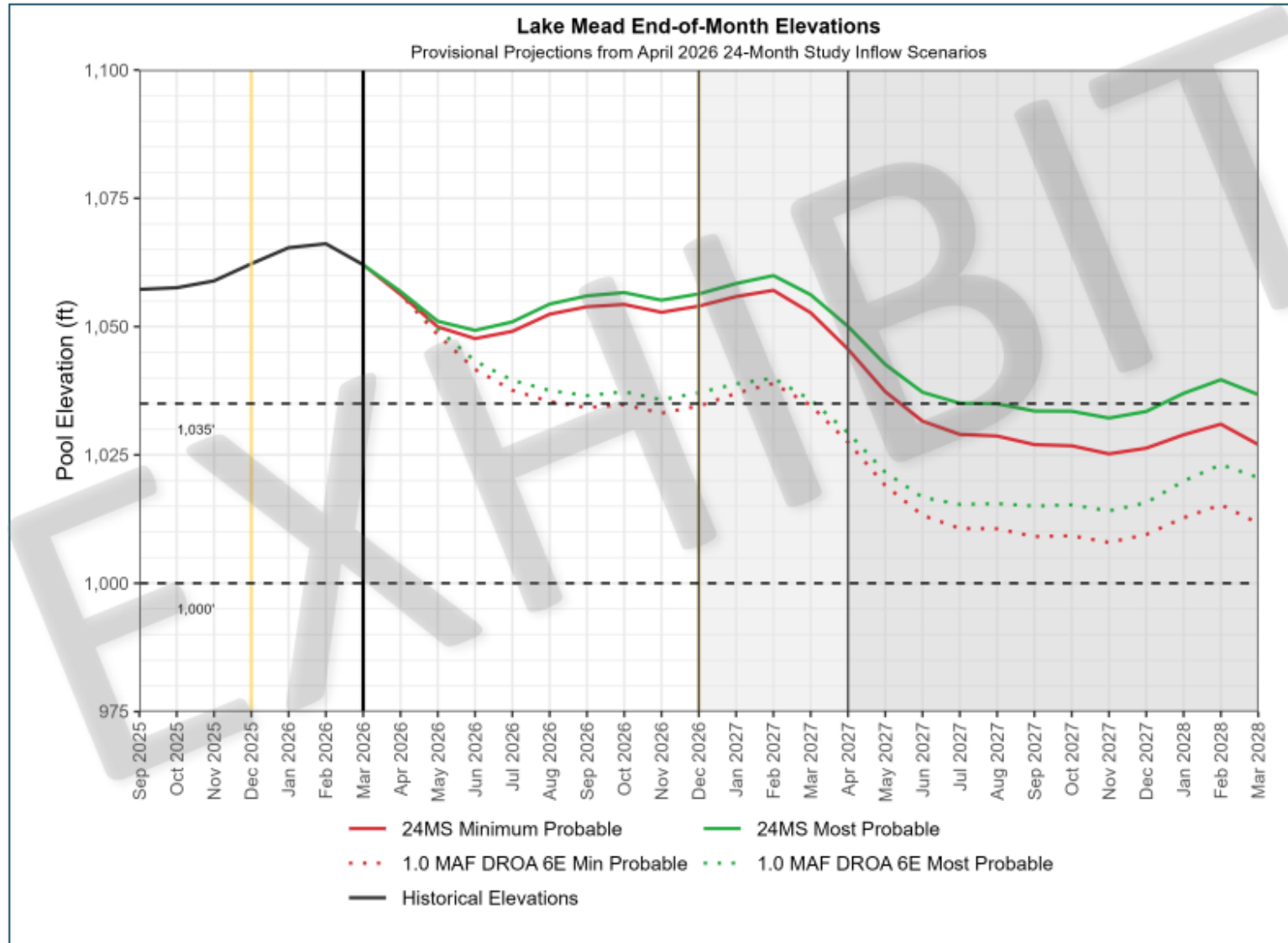
Lake Powell End-of-Month Elevations

Provisional Projections from April 2026 24-Month Study Inflow Scenarios



DROA & 6E Exhibit Model Results

1 maf Release from UIU and 6.0 maf Release from Powell in WY 2026



Questions?

James Heffner

Phone: 602.771.8411

Email: jheffner@azwater.gov

Website: azwater.gov

Twitter: [@azwater](https://twitter.com/azwater)

Colorado River Conditions:

<https://www.azwater.gov/crm/dashboard>

