

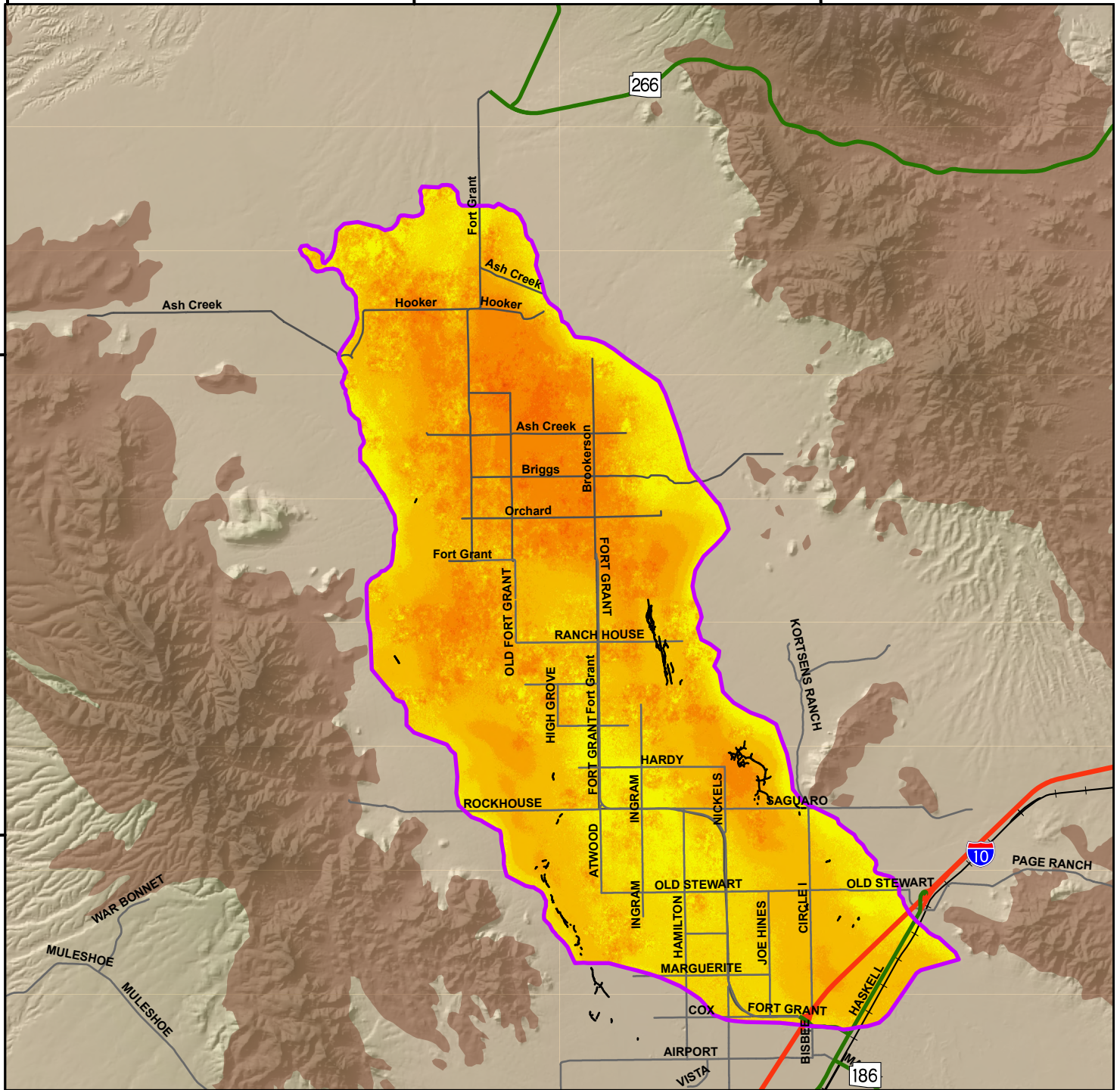
110°10'0"W

110°0'0"W

109°50'0"W

32°30'0"N

32°20'0"N



Total Land Subsidence in the Fort Grant Rd and Willcox Areas, Cochise and Graham Counties
 Based on Sentinel-1 Satellite Interferometric Synthetic Aperture Radar (InSAR) Data

© ESA 2025 - 2026
 © ASF 2025 - 2026

Time Period of Analysis: 1.0 Years 05/13/2025 To 05/08/2026

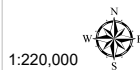
Explanation

05/13/2025 To 05/08/2026

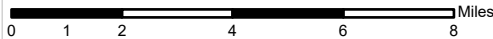
Total Land Subsidence

- Decorrelation/No Data
- Greater 40 cm (15.7 in)
- 25 - 40 cm (9.8 - 15.7 in)
- 15 - 25 cm (5.9 - 9.8 in)
- 10 - 15 cm (3.9 - 5.9 in)
- 6 - 10 cm (2.4 - 3.9 in)
- 4 - 6 cm (1.6 - 2.4 in)
- 2 - 4 cm (0.8 - 1.6 in)
- 1 - 2 cm (0.4 - 0.8 in)
- 0 - 1 cm (0 - 0.4 in)

- Subsidence Feature
- Hardrock
- Earth Fissures
- Highways and Interstates**
- Interstate
- US
- State
- Roads
- Railway



1:220,000



Decorrelation (white areas) are areas where the phase of the received satellite signal changed between satellite passes, causing the data to be unusable. This occurs in areas where the land surface has been disturbed (i.e. bodies of water, snow, agriculture areas, areas of development, etc).

Earth fissures were mapped by the Arizona Geological Survey. For information on earth fissures visit: www.azgs.gov/EFC

Coordinate System: NAD 1983 UTM Zone 12N
 Projection: Transverse Mercator
 Datum: North American 1983
 Units: Meter
 Created: 5/19/2026

