

# Welcome

The meeting will begin shortly, in the meantime please:

- Keep your microphone muted during the meeting
- If you have a question/comment during the meeting type it in the chat box and it will be read and addressed
- If you experience any technical difficulties, please contact ADWR Help Desk at 602-771-8444 or [tickets@azwater.gov](mailto:tickets@azwater.gov)



# Santa Cruz Active Management Area Groundwater Users Advisory Council April 8th, 2026



4/8/2026

Santa Cruz GUAC

# Meeting Agenda

**1. Call to Order – Welcome & Introductions – Chair**

**2. Meeting Logistics – Cali Mauri, ADWR**

**3. Water Management Assistance Program (WMAP) – Tommy Thiatmaja, ADWR**

Discussion and report of the WMAP fund balance.

**4. WMAP Project Presentations**

**Borderlands Restoration Network (BRN) – Aspen Thies**

Presentation on the accomplishments of the Groundwater Recharge on Working Lands by Local Youth to Enhance Ecosystem Services project.

**5. Call to the Council – Chair**

**6. Call to the Public – Chair**

**7. Adjournment – Chair**



# Meeting Agenda

1. Call to Order – Welcome & Introductions – *Chair*
2. **Meeting Logistics** – *Cali Mauri, ADWR*
3. **Water Management Assistance Program (WMAP)** – *Tommy Thiatmaja, ADWR*  
Discussion and report of the WMAP fund balance.
4. **WMAP Project Presentations**  
**Borderlands Restoration Network (BRN)** – *Aspen Thies*  
Presentation on the accomplishments of the Groundwater Recharge on Working Lands by Local Youth to Enhance Ecosystem Services project.
5. Call to the Council – *Chair*
6. Call to the Public – *Chair*
7. Adjournment – *Chair*



# Meeting Logistics

- For guests joining online:
  - Please keep your microphone muted during the meeting
  - Type your question/comment in the chat box and it will be read and addressed
- During the Call to Public attendees will have the option to speak to the Council
- This meeting is being recording and will be posted to ADWR's website
- With any technical difficulties please contact ADWR Help Desk at 602-771-8444 or [tickets@azwater.gov](mailto:tickets@azwater.gov)
- If you would like to be added to the GUAC mailing list, please email [cmauri@azwater.gov](mailto:cmauri@azwater.gov) stating:  
“Add (your email) to Santa Cruz AMA GUAC Mailing List”



# Meeting Agenda

1. Call to Order – Welcome & Introductions – *Chair*

2. Meeting Logistics – *Cali Mauri, ADWR*

3. **Water Management Assistance Program (WMAP)** – *Tommy Thiatmaja, ADWR*

Discussion and report of the WMAP fund balance.

4. **WMAP Project Presentations**

**Borderlands Restoration Network (BRN)** – *Aspen Thies*

Presentation on the accomplishments of the Groundwater Recharge on Working Lands by Local Youth to Enhance Ecosystem Services project.

5. Call to the Council – *Chair*

6. Call to the Public – *Chair*

7. Adjournment – *Chair*



# Water Management Assistance Program Fund

**Current Balance: \$489,299**

**Encumbered/committed: \$25,000**

**Remaining Balance: \$464,299**



# Santa Cruz Active Management Area Groundwater Withdrawal Information



Year		2021	2022	2023	2024	2025	2026
WMAP	Fee	\$2.00	\$2.00	\$2.00	\$2.00	\$2.00	\$2.00
	Collected	\$29,642	\$28,937	\$30,345	\$19,857	N/A	N/A
Admin & Enforcement	Fee	\$1.00	\$1.00	\$1.00	\$1.00	\$1.00	\$1.00
	Collected	\$14,821	\$14,469	\$15,172	\$9,428	N/A	N/A
Total	Fee	\$3.00	\$3.00	\$3.00	\$3.00	\$3.00	\$3.00
	Collected	\$49,145	\$48,569	\$48,132	\$30,451	N/A	N/A

4/8/2026

Santa Cruz GUAC

# Current projects being funded by WMAP:

PROJECT NAME	CONTRACTOR	TOTAL FUNDING	REMAINING FUNDING	CONTRACT ENDS
Arizona Project WET	University of Arizona	\$25,000	\$25,000	10/31/2027



# Groundwater Conservation Grant Projects

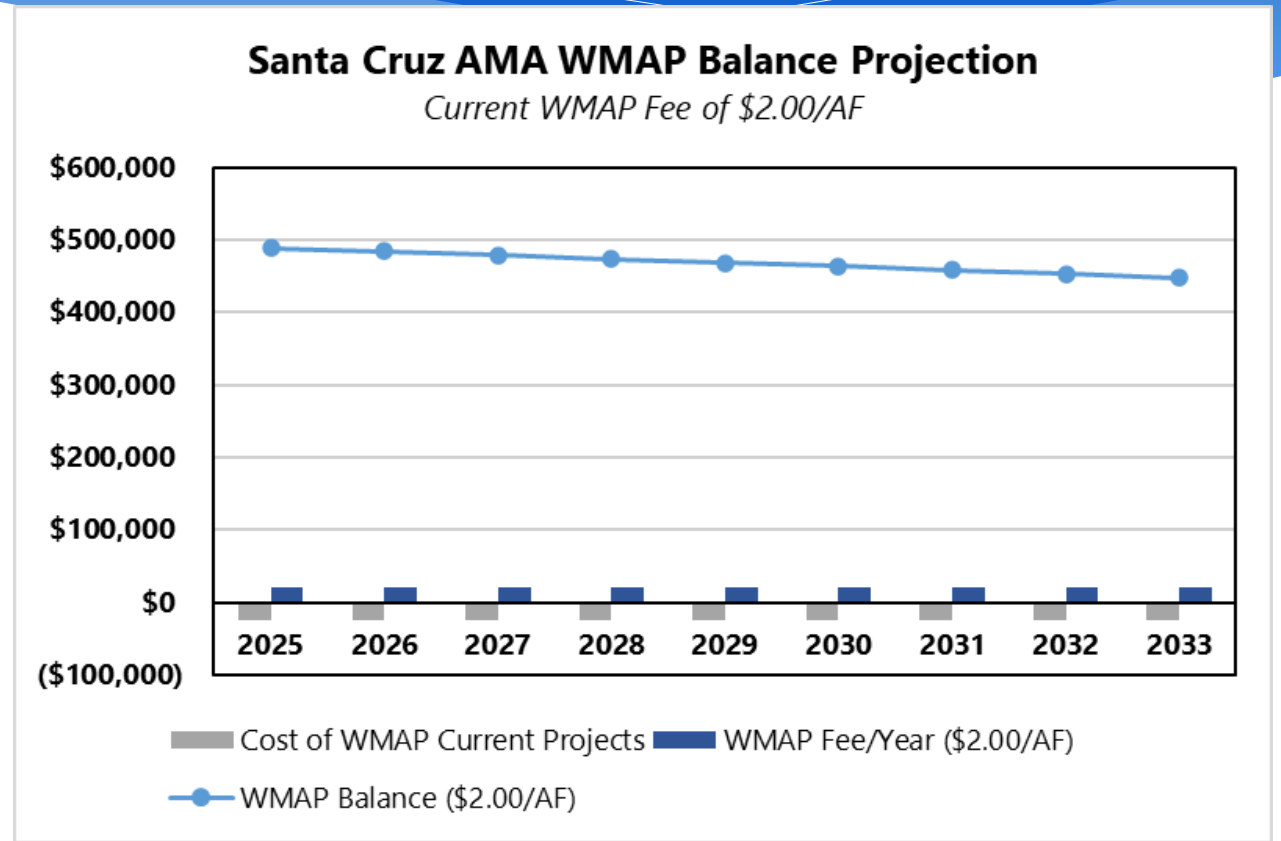
PROJECT NAME	DESCRIPTION	CONTRACT NUMBER	TOTAL FUNDING	REMAINING FUNDING	CONTRACT ENDS
Groundwater Recharge on Working Lands by Local Youth to Enhance Ecosystem Services	Stabilize the riparian headwater and return native vegetation to main drainage areas of the watershed in order to increase flows, recharge groundwater, stabilize soils, restore riparian habitats and enhance ecosystem services.	2020-3131	\$105,291 (\$11,938 WMAP Funds)	\$0	Completed



# Santa Cruz Active Management Area Water Management Assistance Program Fee Projections

**\$2.00:**

Year	WMAP Fee/AF	WMAP Fee/Year	Cost of WMAP Current Contracts	Unobligated WMAP Balance
<b>2025</b>	<b>\$2.00</b>	<b>\$19,857</b>	<b>(\$25,000)</b>	<b>\$489,299</b>
2026	\$2.00	\$19,857	(\$25,000)	\$484,156
2027	\$2.00	\$19,857	(\$25,000)	\$479,013
2028	\$2.00	\$19,857	(\$25,000)	\$473,870
2029	\$2.00	\$19,857	(\$25,000)	\$468,727
2030	\$2.00	\$19,857	(\$25,000)	\$463,584
2031	\$2.00	\$19,857	(\$25,000)	\$458,441
2032	\$2.00	\$19,857	(\$25,000)	\$453,298
2033	\$2.00	\$19,857	(\$25,000)	\$448,155



# Meeting Agenda

1. Call to Order – Welcome & Introductions – *Chair*
2. Meeting Logistics – *Cali Mauri, ADWR*
3. Water Management Assistance Program (WMAP) – *Tommy Thiatmaja, ADWR*  
Discussion and report of the WMAP fund balance.
4. **WMAP Project Presentations**  
**Borderlands Restoration Network (BRN) – *Aspen Thies***  
Presentation on the accomplishments of the Groundwater Recharge on Working Lands by Local Youth to Enhance Ecosystem Services project.
5. Call to the Council – *Chair*
6. Call to the Public – *Chair*
7. Adjournment – *Chair*





# BORDERLANDS RESTORATION NETWORK

REBUILD.  
RESTORE.  
RECONNECT.

## Groundwater Recharge on Working Lands by Local Youth to Enhance Ecosystem Services

Aspen Thies, Watershed Restoration Project Manager



**PROTECT**

*critical wildlife corridors.*

**RESTORE**

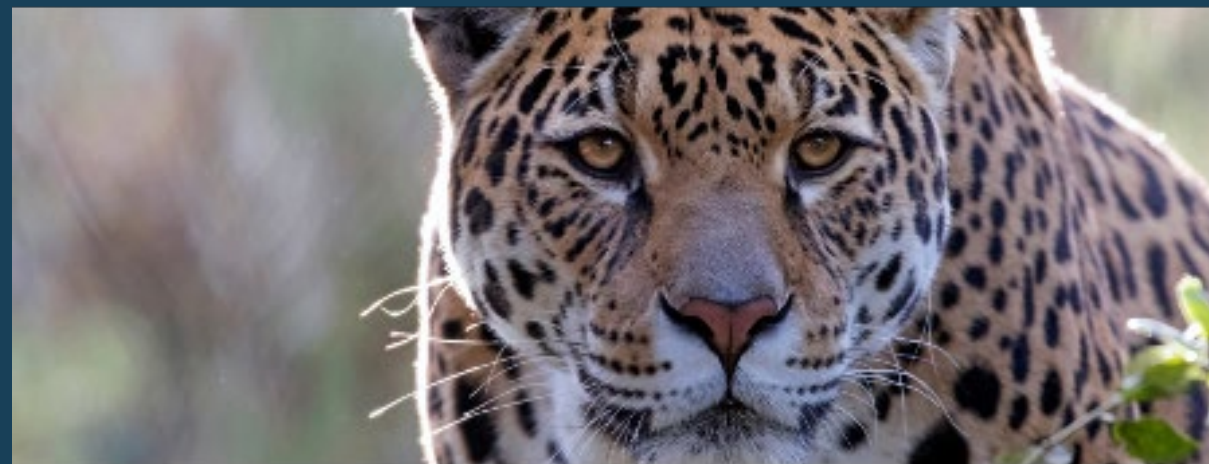
*habitat for plants and animals*

**RECONNECT**

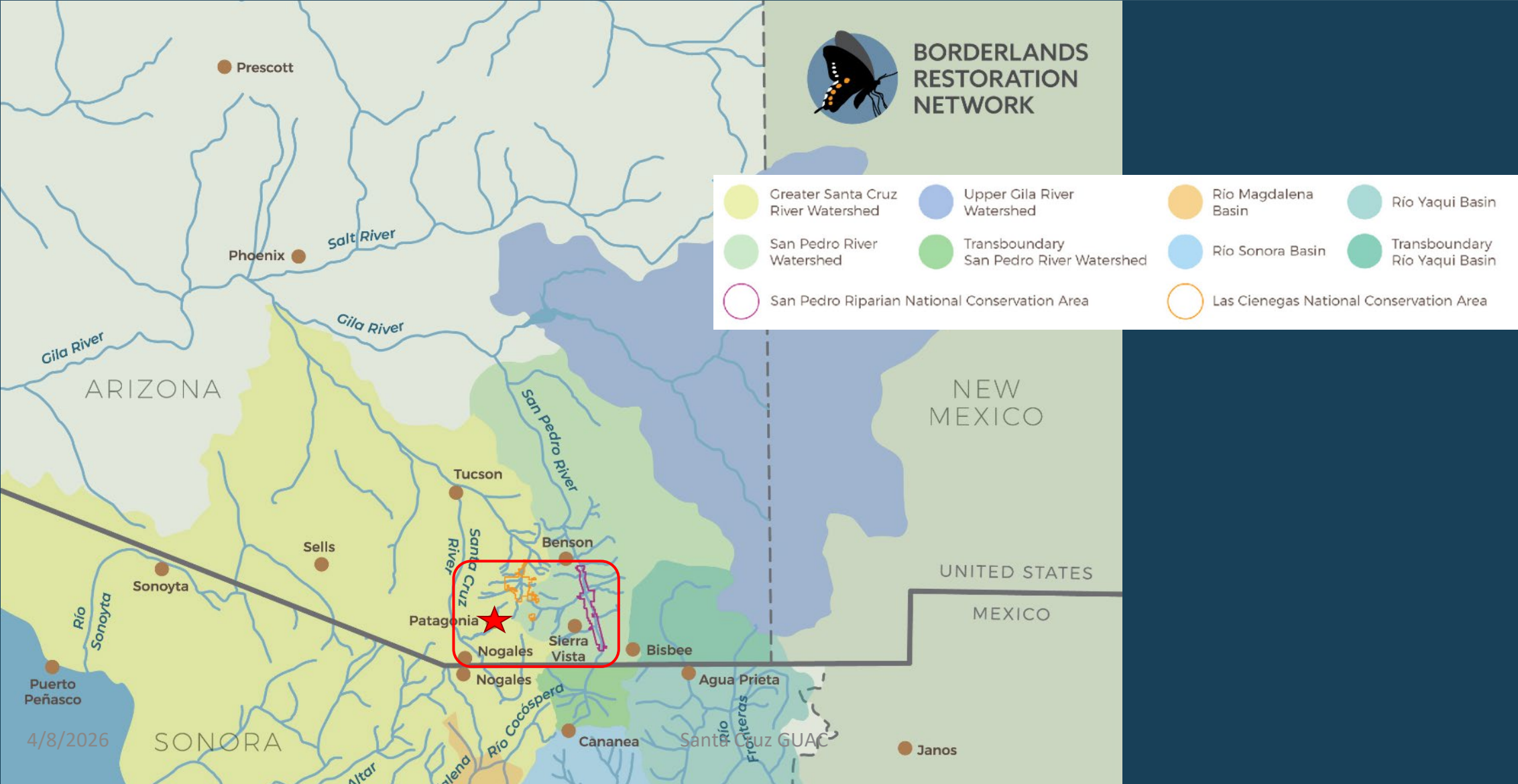
*to the land through shared learning*

4/8/2026

Santa Cruz GUAC



# Where we work: geographically



# Project Site: T4 Ranch



# Why?



4/8/2026

Santa Cruz GUAC

# Human Impacts on the Landscape



7/8/2026

Santa Cruz Co, AZ

# Erosion – A Visible Symptom



# How?



4/8/2026

Santa Cruz GUAC

# Watershed Restoration Program



- **699** erosion control structures installed across **12** drainages
- **193** tons of sediment potentially collected

# Before and After



# T4 Ranch: Site conditions



**Site conditions:** arid and semi arid uplands and ephemeral washes

**Characterized by:** highly variable, high-energy flow regimes

# Watershed Restoration Program



- Slow water to allow for infiltration
- Slow problematic erosion
- Trap sediment and organic material to rebuild soils
- Create microclimates for plants to thrive
- Buffer against flooding and wildfire

# Log-rock-structures



# One-rock-dams



# Native Plant Program

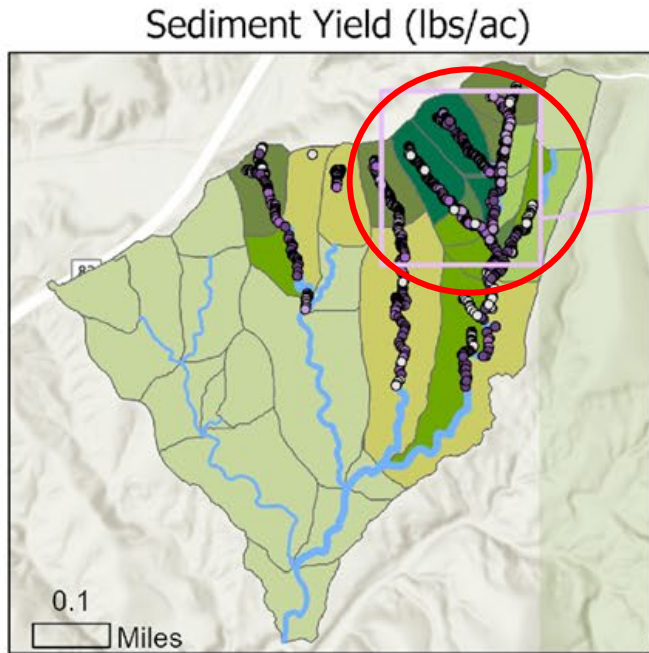
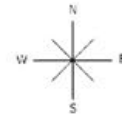


# Education Program



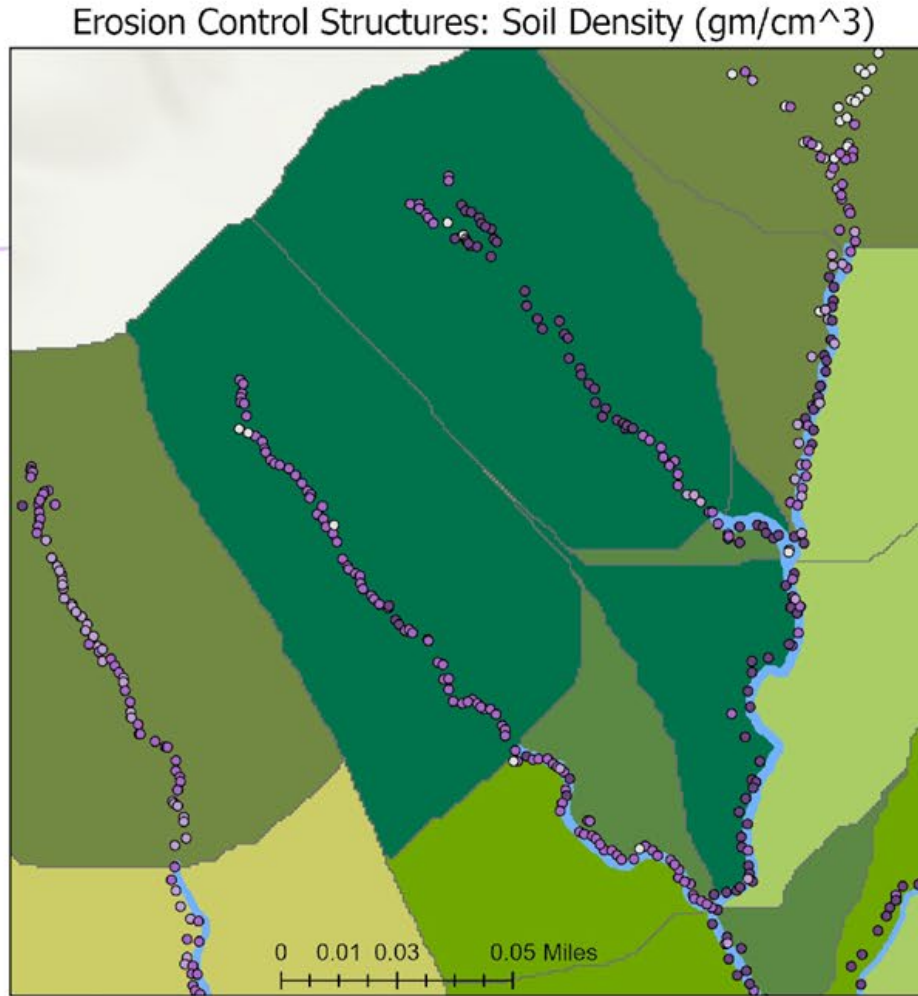
# T4 Ranch Watershed Restoration (2021-2023)

Percent Difference Pre and Post ECS



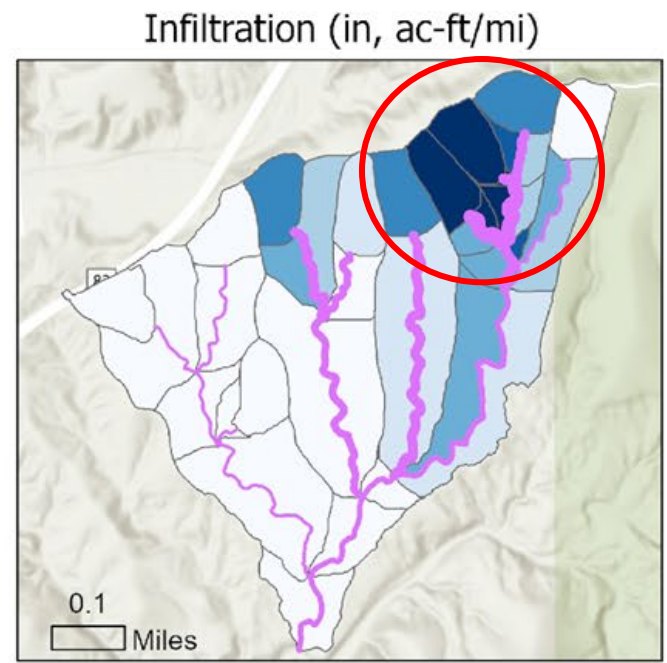
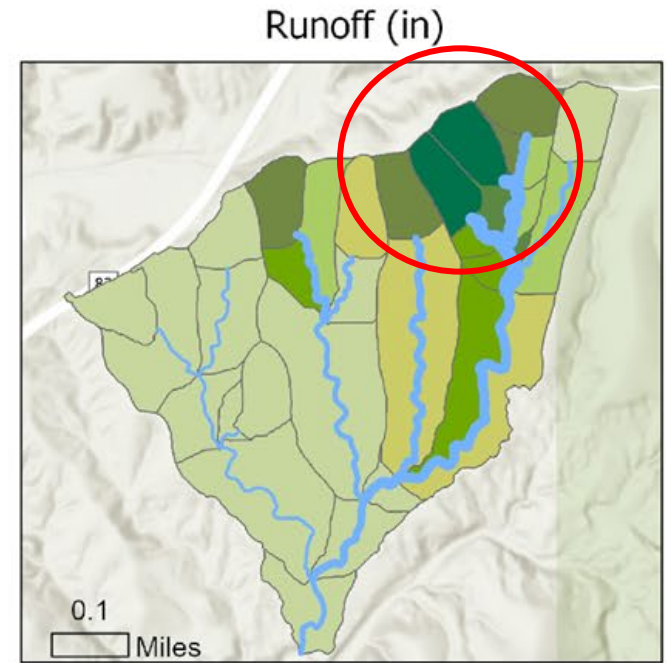
Sediment Yield Legend	
Planes	Streams
Dark Green: -51% - -47%	Blue: > -43%
Medium Green: -46% - -43%	Light Blue: -42% - -26%
Light Green: -42% - -38%	Very Light Blue: -25% - -16%
Yellow-Green: -37% - -29%	Lightest Blue: -15% - -8%
Yellow: -28% - -27%	White: -7% - 0%
Lightest Yellow: -26% - -20%	
White: -19% - 0%	

ECS Legend
Soil Density (gm/cm <sup>3</sup> )
White circle: 0
Purple circle: 0.1 - 1.52
Dark Purple circle: 1.53 - 1.63
Black circle: 1.64 - 1.7



Runoff Legend	
Streams	Planes
Blue: -16.9% - -13.4%	Dark Green: -18.1% - -16.6%
Light Blue: -13.3% - -9.1%	Medium Green: -16.5% - -13.9%
Very Light Blue: -9.0% - -6.9%	Light Green: -13.8% - -9.7%
Lightest Blue: -6.8% - -3.2%	Yellow-Green: -9.6% - -6.4%
White: -3.1% - 0%	Yellow: -6.3% - -5.2%
	Lightest Yellow: -5.1% - 3.7%
	White: -3.6% - 0%

Infiltration Legend	
Streams	Planes
Purple: -0.74% - 0%	White: -0.03% - 0.46%
Light Purple: 0.1% - 1.69%	Lightest Blue: 0.47% - 5.52%
Medium Purple: 1.70% - 2.37%	Light Blue: 5.53% - 7.11%
Dark Purple: 2.38% - 2.75%	Medium Blue: 7.12% - 8.54%
Black: 2.76% - 3.35%	Dark Blue: 8.55% - 13.98%
	Very Dark Blue: 13.98% - 18.01%
	Black: 18.02% - 24.4%



The T4 Ranch Watershed Restoration project, planned and executed by Borderlands Restoration Network, built 700+ erosion control structures to increase surface and base flow for greater groundwater recharge, stabilized soils, and increased native plant propagation. Utilizing KINEROS Model within AGWA, the depicted data was extracted where the concluding analysis shows the potential for groundwater recharge, by significant sediment and runoff decrease and infiltration increase.

Santa Cruz GUAC

# Conclusions





**BORDERLANDS  
RESTORATION  
NETWORK**

**REBUILD.  
RESTORE.  
RECONNECT.**

**Thank you!**

Questions?

# Meeting Agenda

1. **Call to Order – Welcome & Introductions** – *Chair*
2. **Meeting Logistics** – *Cali Mauri, ADWR*
3. **Water Management Assistance Program (WMAP)** – *Tommy Thiatmaja, ADWR*  
Discussion and report of the WMAP fund balance.
4. **WMAP Project Presentations**  
**Borderlands Restoration Network (BRN)** – *Aspen Thies*  
Presentation on the accomplishments of the Groundwater Recharge on Working Lands by Local Youth to Enhance Ecosystem Services project.
5. **Call to the Council** – *Chair*
6. **Call to the Public** – *Chair*
7. **Adjournment** – *Chair*



# Meeting Agenda

1. **Call to Order – Welcome & Introductions** – *Chair*
2. **Meeting Logistics** – *Cali Mauri, ADWR*
3. **Water Management Assistance Program (WMAP)** – *Tommy Thiatmaja, ADWR*  
Discussion and report of the WMAP fund balance.
4. **WMAP Project Presentations**  
**Borderlands Restoration Network (BRN)** – *Aspen Thies*  
Presentation on the accomplishments of the Groundwater Recharge on Working Lands by Local Youth to Enhance Ecosystem Services project.
5. **Call to the Council** – *Chair*
6. **Call to the Public** – *Chair*
7. **Adjournment** – *Chair*



# Meeting Agenda

1. **Call to Order – Welcome & Introductions** – *Chair*
2. **Meeting Logistics** – *Cali Mauri, ADWR*
3. **Water Management Assistance Program (WMAP)** – *Tommy Thiatmaja, ADWR*  
Discussion and report of the WMAP fund balance.
4. **WMAP Project Presentations**  
**Borderlands Restoration Network (BRN)** – *Aspen Thies*  
Presentation on the accomplishments of the Groundwater Recharge on Working Lands by Local Youth to Enhance Ecosystem Services project.
5. **Call to the Council** – *Chair*
6. **Call to the Public** – *Chair*
7. **Adjournment** – *Chair*

