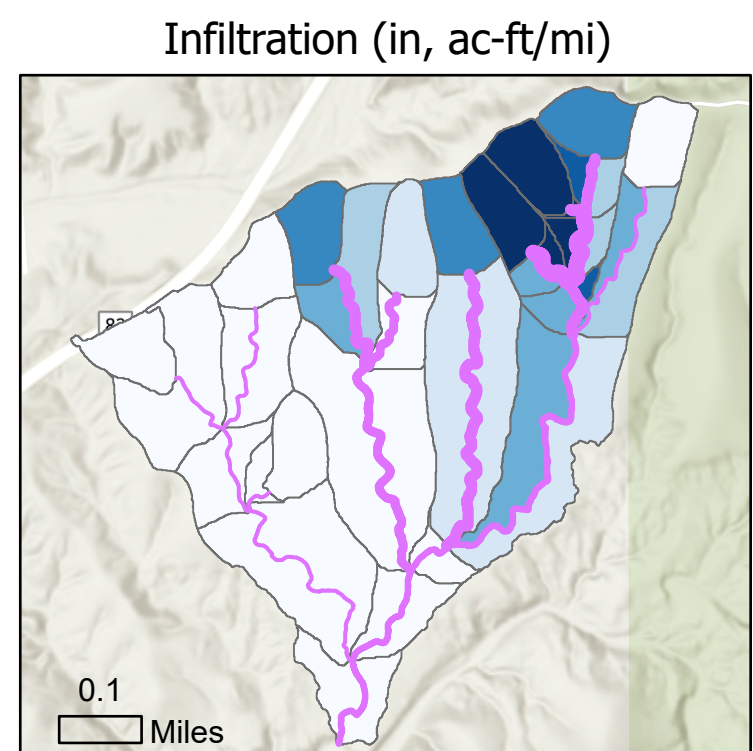
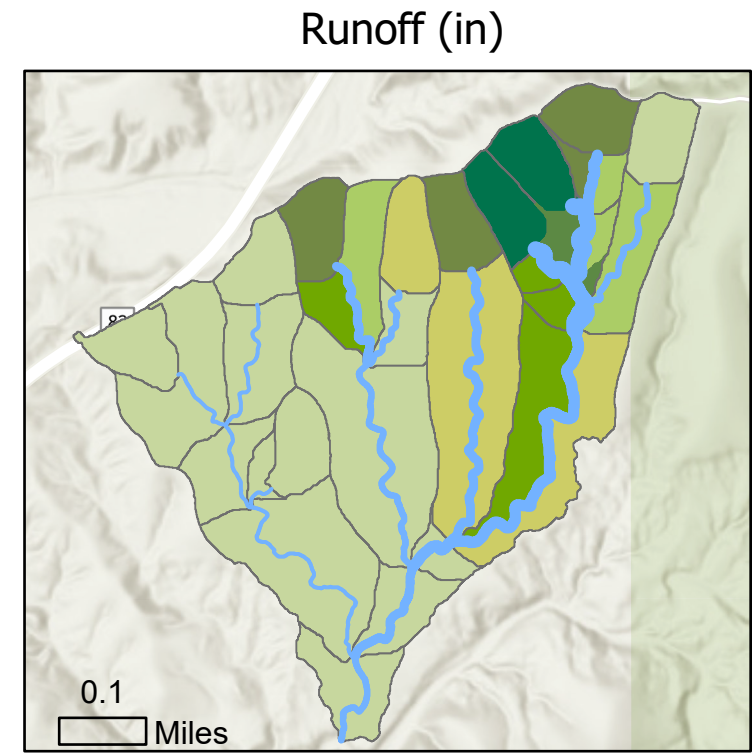
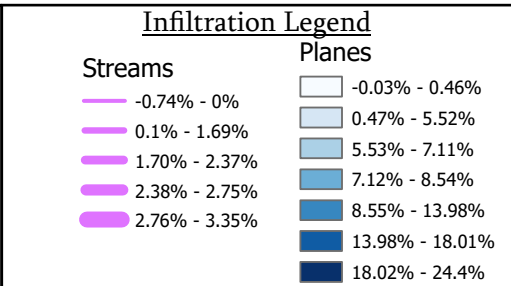
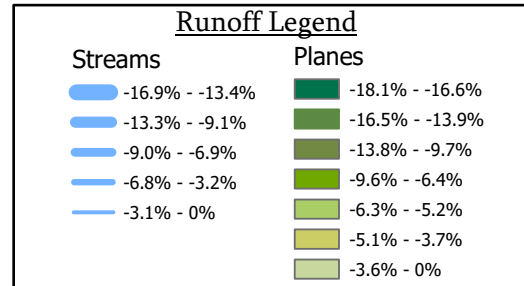
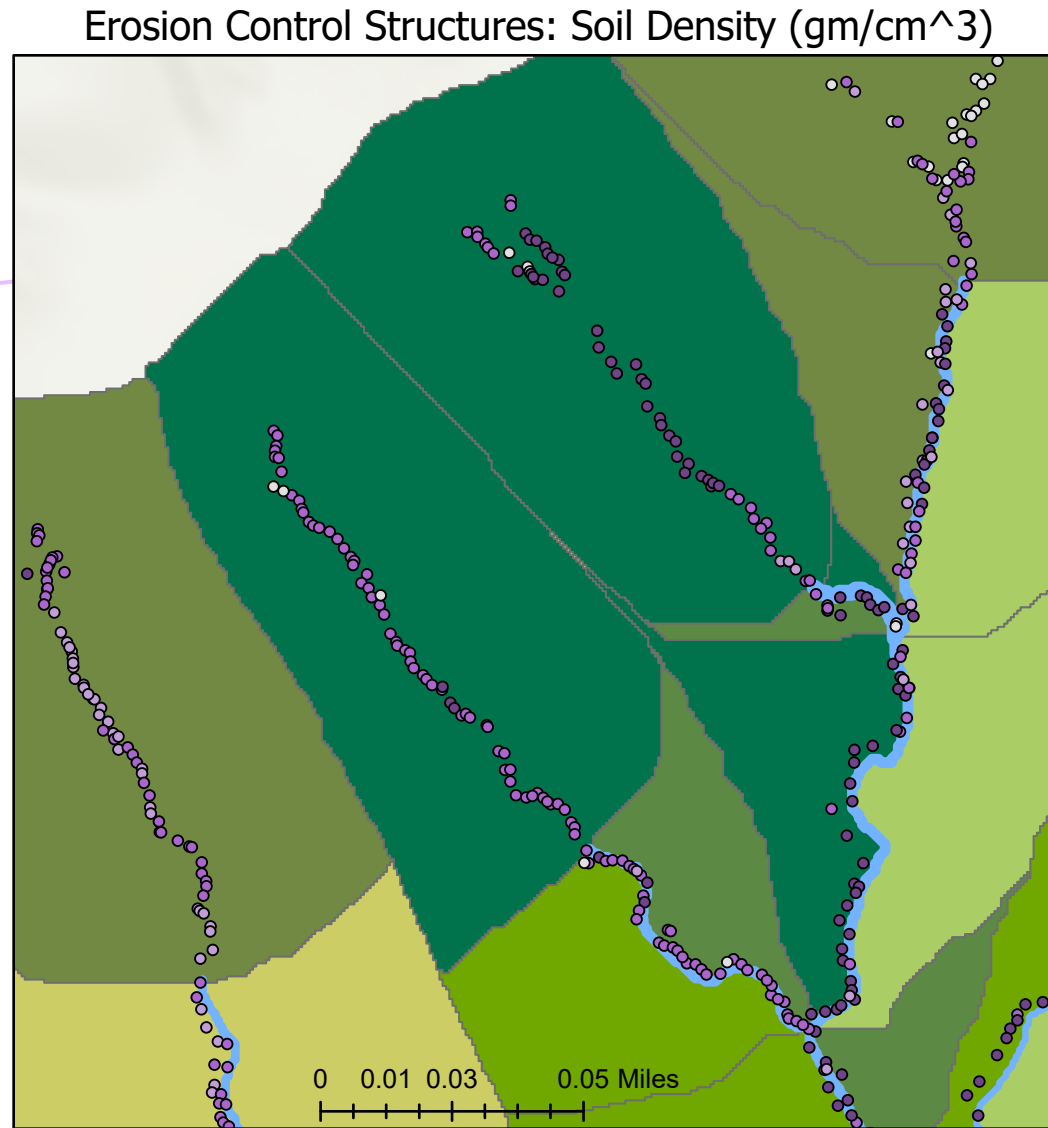
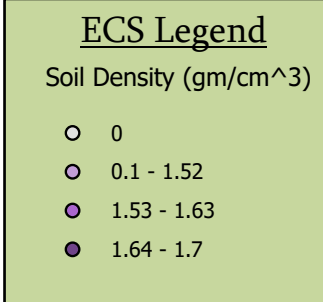
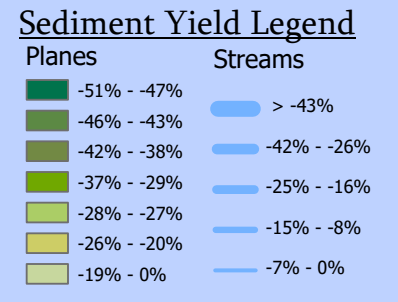
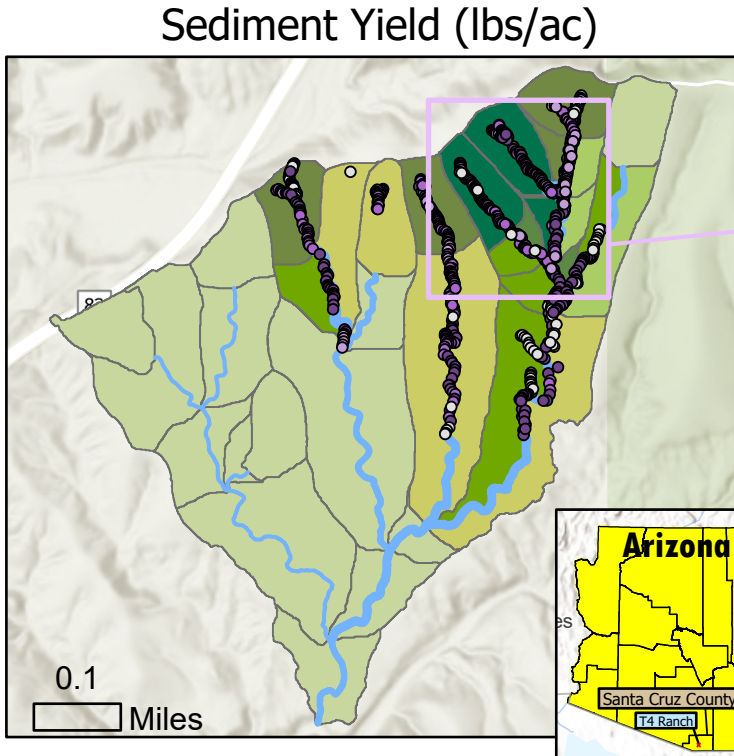
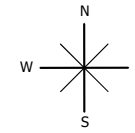


T4 Ranch Watershed Restoration (2021-2023)

Percent Difference Pre and Post ECS



The T4 Ranch Watershed Restoration project, planned and executed by Borderlands Restoration Network, built 700+ erosion control structures to increase surface and base flow for greater groundwater recharge, stabilized soils, and increased native plant propagation. Utilizing KINEROS Model within AGWA, the depicted data was extracted where the concluding analysis shows the potential for groundwater recharge, by significant sediment and runoff decrease and infiltration increase.