

Verde River Basin (2024)

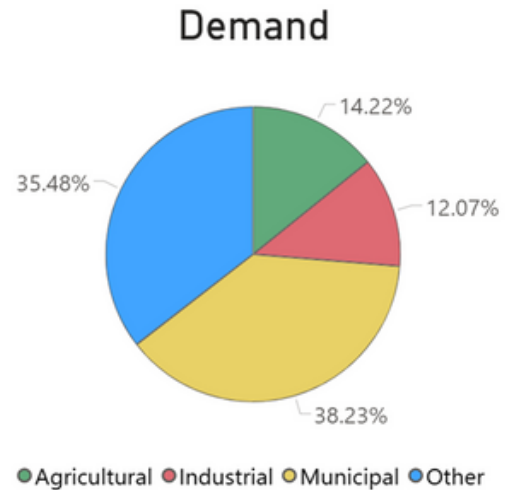
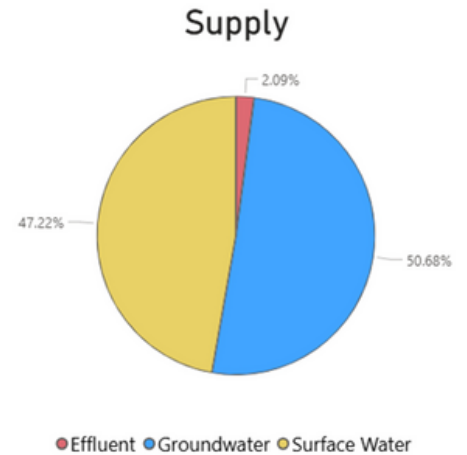
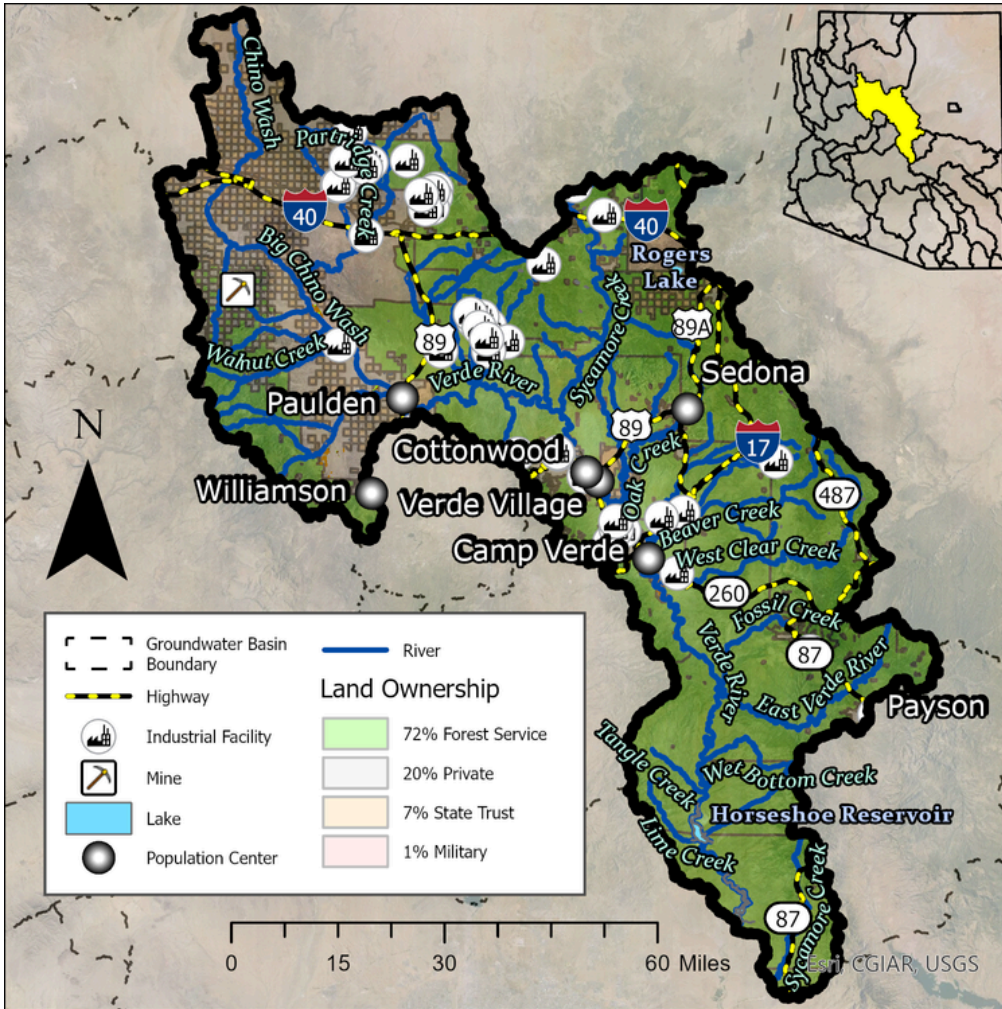


Quick Facts

- The Verde River Basin comprises 5,661 square miles in Yavapai, Coconino, Gila and Maricopa Counties.
- Groundwater regionally flows toward the southeast, following the surface water drainage pattern.
- The Verde River begins south of the census-designated place Paulden, and runs southeast through the basin and the Town of Clarkdale, City of Cottonwood, and Town of Camp Verde.
- The Verde River Basin has experienced significant growth in recent decades. Its current estimated population is 105,766.

Groundwater Status
Undetermined*
 (Positive Balance in Big Chino Subbasin)

The main source of supply in the basin is groundwater. The greatest demand in this basin is municipal.



*Groundwater storage estimates are limited to the Big Chino subbasin within the Verde River Basin. While the supply and demand can individually be broken down for the entire Verde River basin, as in the Supply and Demand charts to the right, supply and demand results cannot be combined into a comprehensive water budget, except for the Big Chino subbasin which has a positive balance of groundwater supply to demand.