

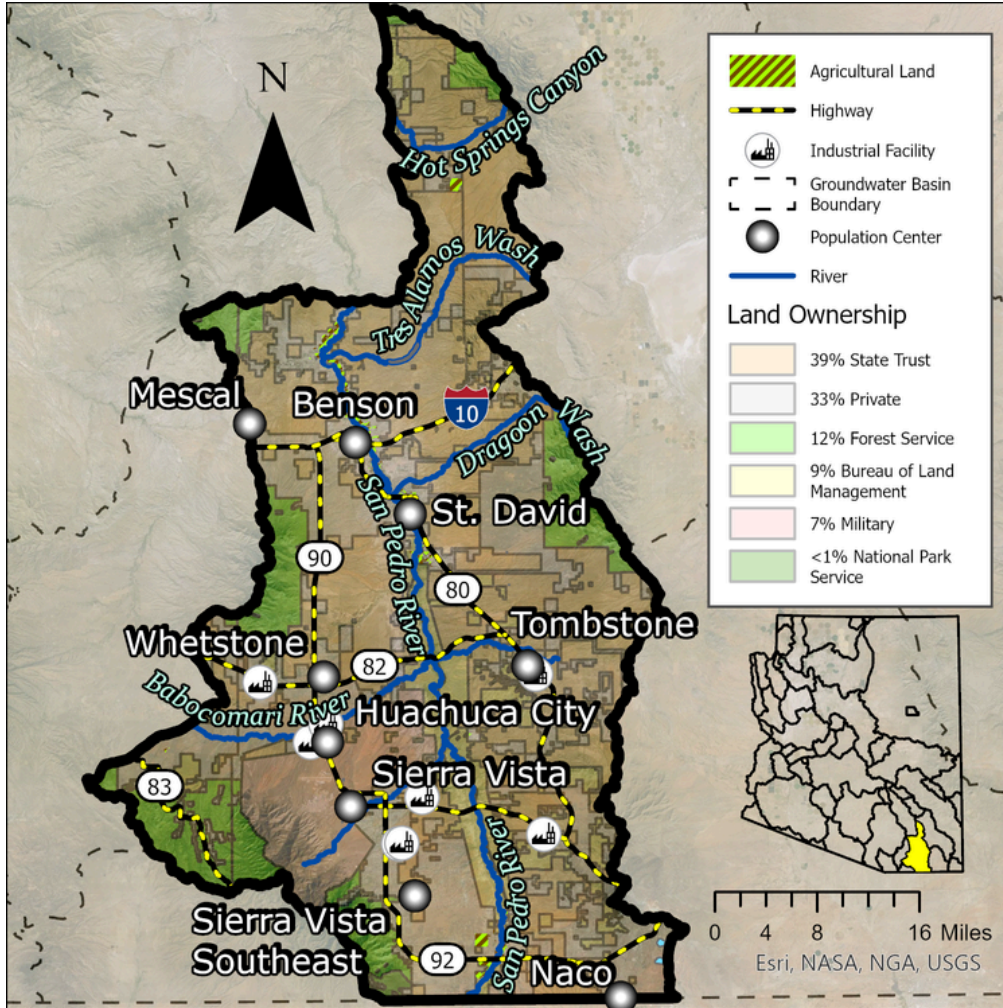
Upper San Pedro Basin (2024)



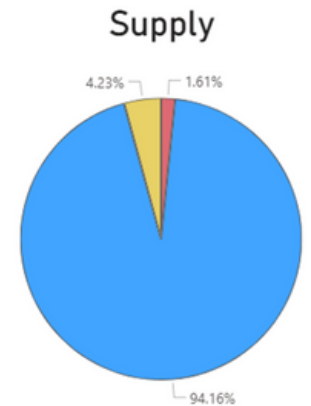
Quick Facts

- The Upper San Pedro Basin encompasses 1,825 square miles in Cochise, Pima, and Santa Cruz Counties.
- Groundwater flows from the mountain fronts toward the San Pedro River and continues north.
- The San Pedro River flows north through the valley east of the cities of Sierra Vista and Benson.
- The basin has an estimated population of 87,228. Sierra Vista, Benson, and the army installation of Fort Huachuca are the largest population centers in the basin.

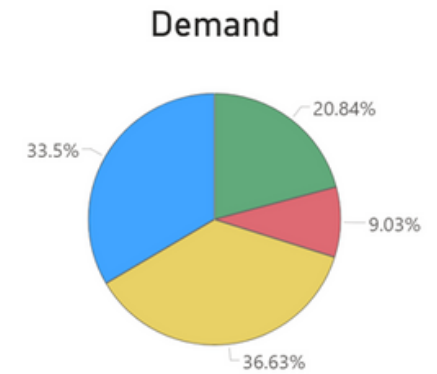
Groundwater Status
Negative Balance
 -20,051 AF / year
Stored: 4.2 MAF



The main source of supply in the basin is groundwater. The greatest demand in this basin is municipal.



● Effluent ● Groundwater ● Surface Water



● Agricultural ● Industrial ● Municipal ● Other

Projected Groundwater Stored, 2050 - 2075

