

Upper Hassayampa Basin (2024)



Quick Facts

- The Upper Hassayampa Basin encompasses 787 square miles in Yavapai and Maricopa Counties.
- The Hassayampa River runs north to south through the basin's center and the Town of Wickenburg. Groundwater generally flows southward.
- The Upper Hassayampa Basin has a population of 12,833. The Town of Wickenburg is the largest population center.
- The basin has perennial streamflow along the reaches of the Hassayampa River, Ash Creek, Weaver Creek, Minnehaha Creek, and Antelope Creek.

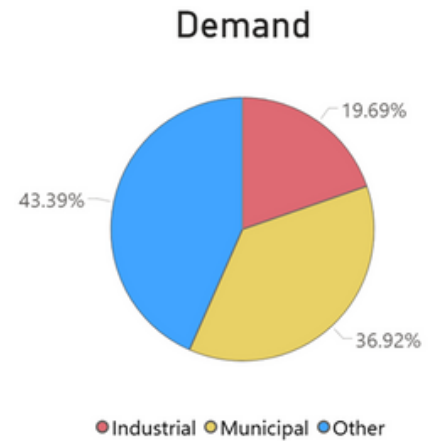
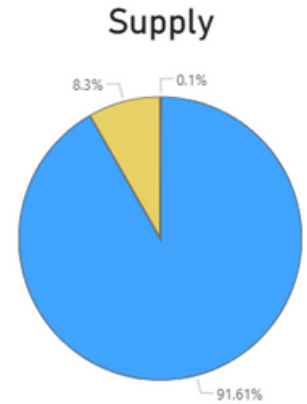
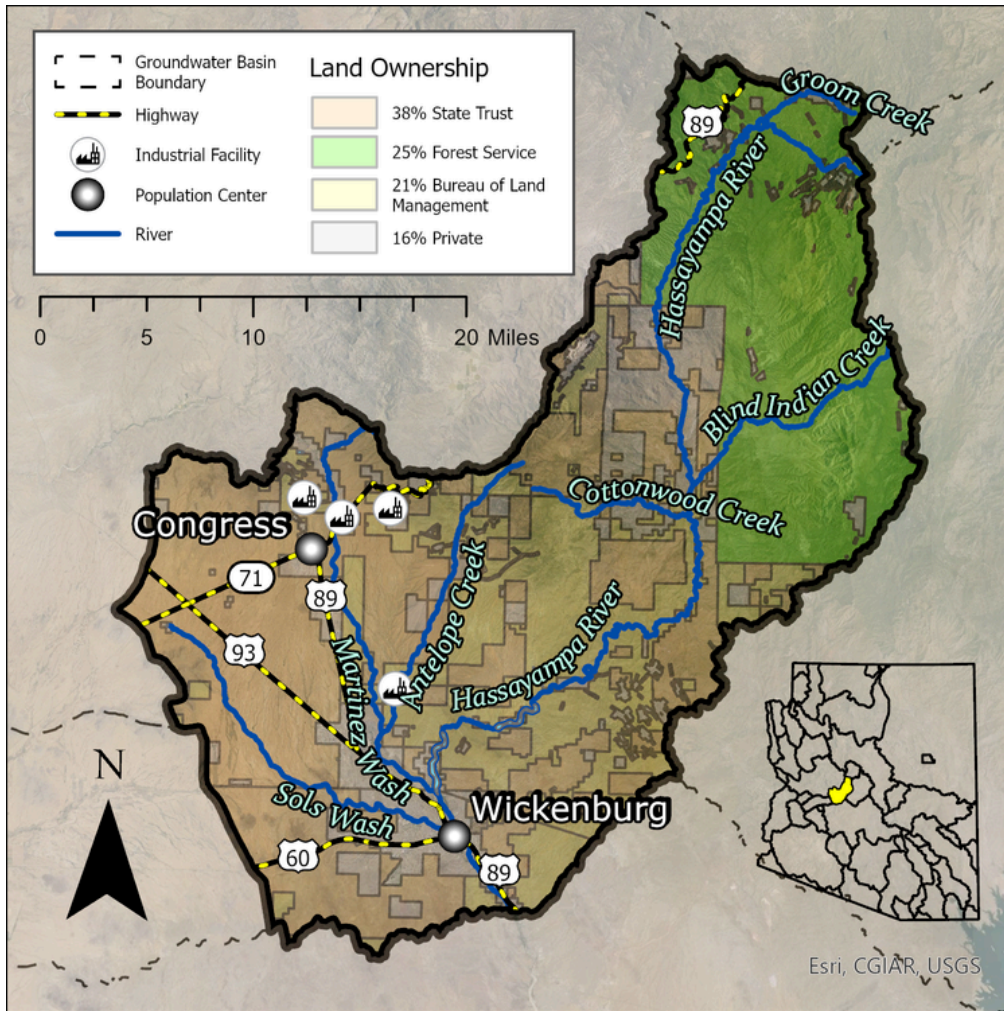
Groundwater Status

Positive Balance

+27,653 AF / year

Stored: 763,512 AF

The main source of supply in the basin is groundwater. The greatest demand in this basin is from evapotranspiration in the Other category.



Projected Groundwater Stored, 2050 - 2075

