

Tonto Creek Basin (2024)



Quick Facts

- The Tonto Creek Basin is located approximately 40 miles northeast of Phoenix. The basin covers 955 square miles within Gila County.
- Groundwater flow direction is generally to the south.
- The Tonto Creek Basin has an estimated population of 9,582. The largest population center is the city of Payson, which is centered in the Verde River Basin but extends into the Tonto Creek Basin.
- The basin has several perennial streams including Tonto Creek, Haigler Creek, and Spring Creek. Various intermittent streams also run through the basin.

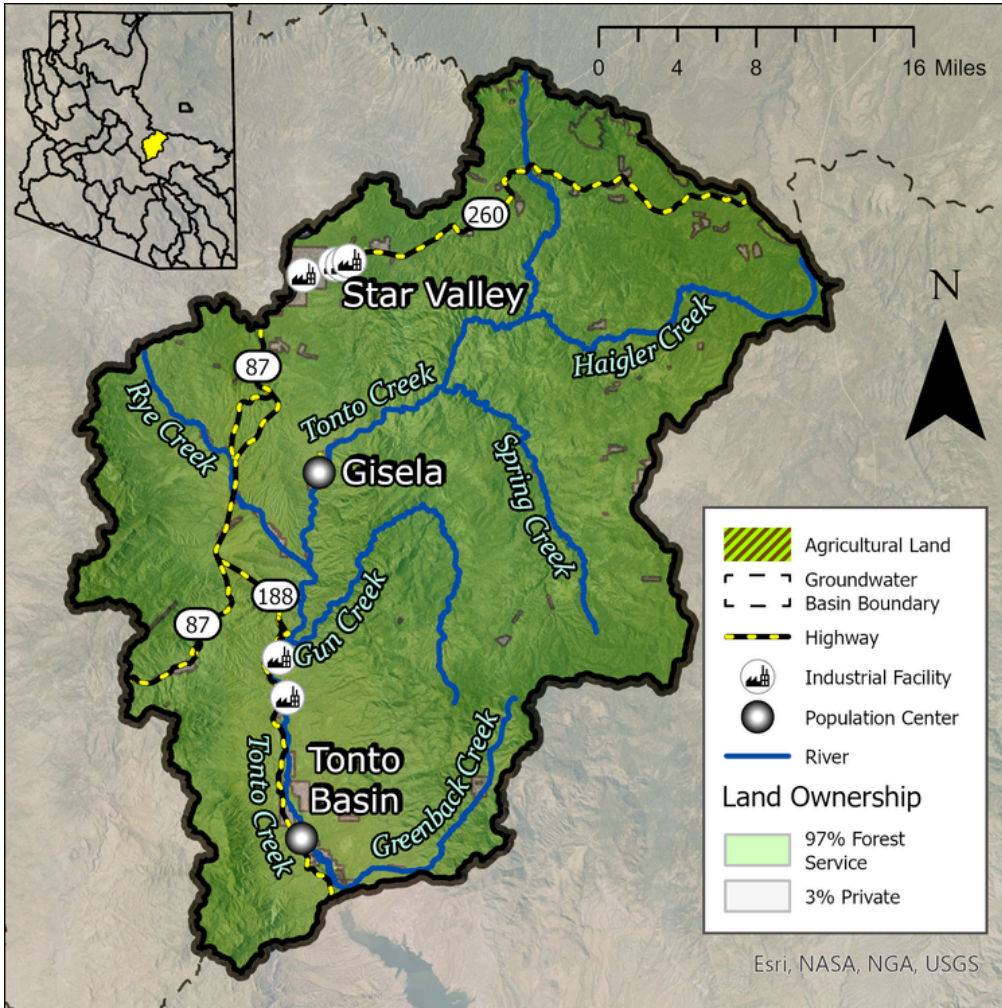
Groundwater Status

Positive Balance

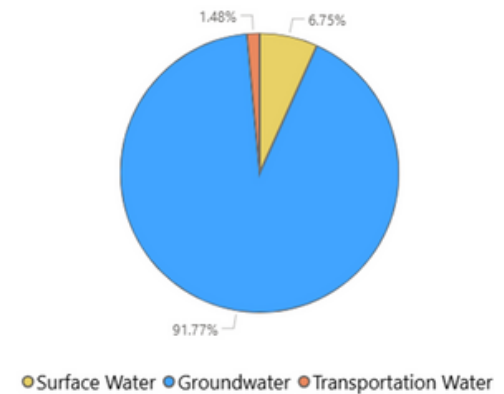
+175,877 AF / yr

Stored: 3.1 MAF

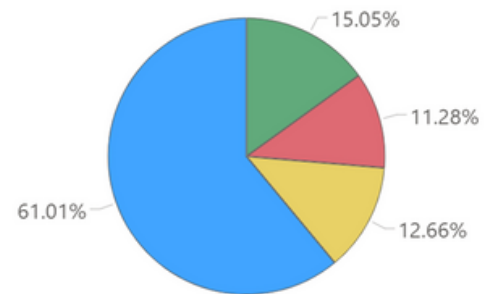
The main source of supply in the basin is groundwater. The greatest demand in this basin is from evapotranspiration in the other category.



Supply



Demand



Projected Groundwater Stored, 2050 - 2075

