

Santa Cruz AMA (2024)

Quick Facts

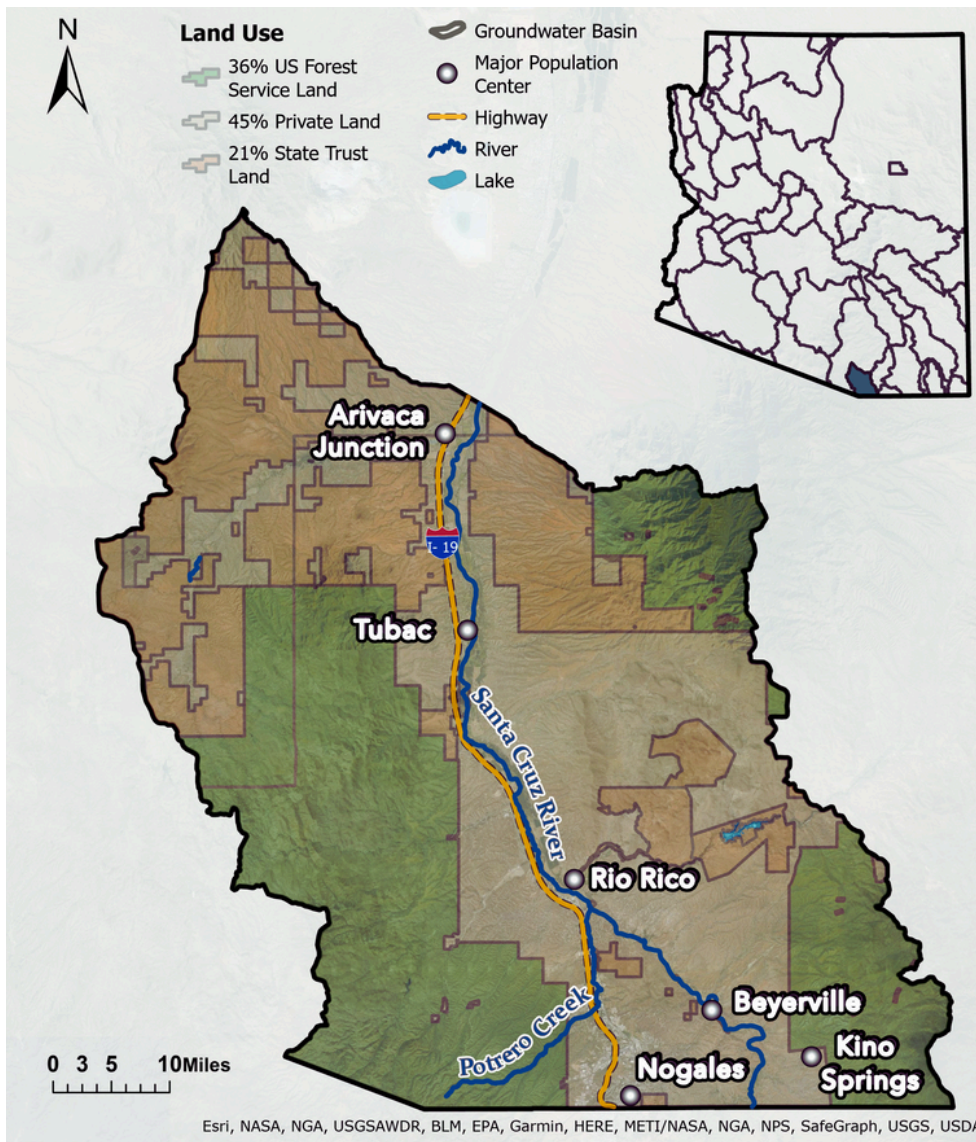
- The Santa Cruz Active Management Area (AMA) covers 716 square miles in Santa Cruz and Pima Counties.
- The estimated population is 46,051, and Nogales is the largest city.
- Surface water and groundwater flow from the mountain ranges into the Santa Cruz River Valley, then north towards Tucson.
- The Nogales International Wastewater Treatment Plant discharges effluent from Sonora, Mexico that contributes to perennial flows in reaches of the Santa Cruz River and Sonoita Creek.
- The Santa Cruz AMA separated from the Tucson AMA in 1994.

Groundwater Status

Negative Balance

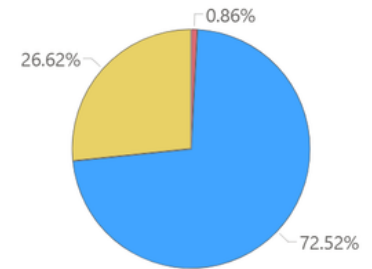
-14,335 AF / year

Stored: 257,622 AF



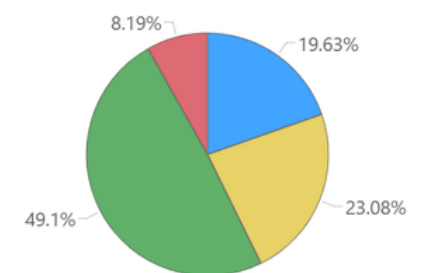
The main source of supply in the basin is groundwater. The greatest demand in this basin is agricultural (49%), followed by municipal (23%), other (20%), and lastly industrial (8%).

Supply



● Effluent ● Groundwater ● Surface Water

Demand



● Other ● Municipal ● Agricultural ● Industrial

Projected Groundwater Stored, 2050 - 2075

