

San Simon Wash Basin (2025)



Quick Facts

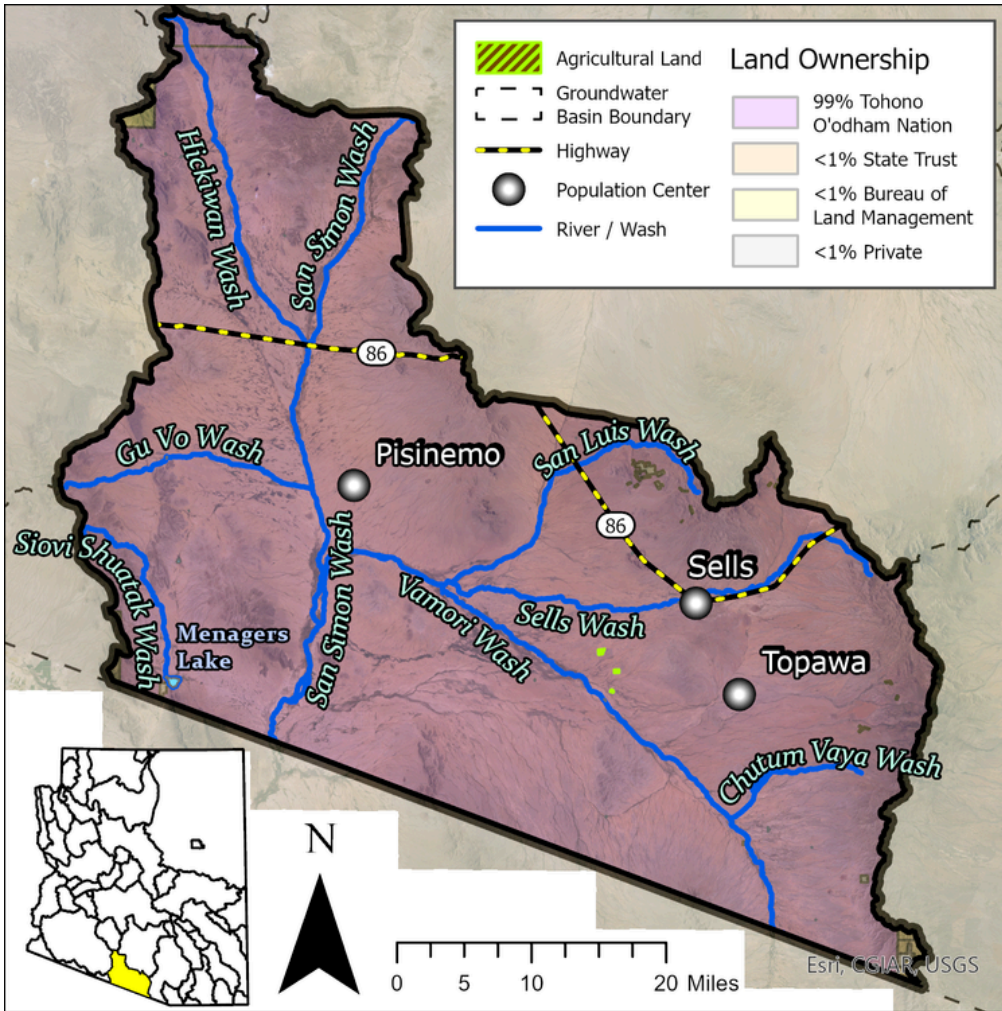
- The San Simon Wash Basin encompasses 2,284 square miles, mostly within Pima County.
- Groundwater typically flows from south to northwest.
- The San Simon Wash is the largest stream and runs north to south through the center of the basin.
- The basin has an estimated 4,870 residents.

Groundwater Status

Negative Balance

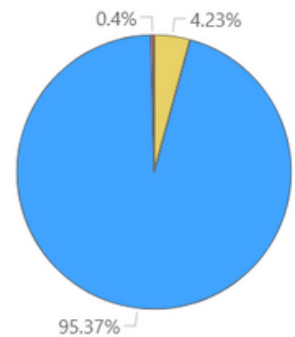
-10,693 AF / year

Stored: 2.8 MAF

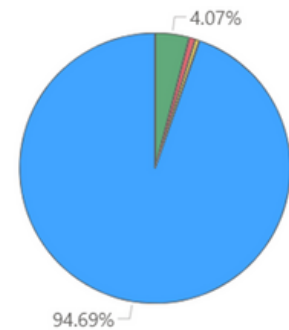


The main source of supply in the basin is groundwater. The greatest demand in this basin is from riparian evapotranspiration in the Other category.

Supply



Demand



● Agricultural ● Industrial ● Municipal ● Other

Projected Groundwater Stored, 2050 - 2075

