

San Rafael Basin (2024)



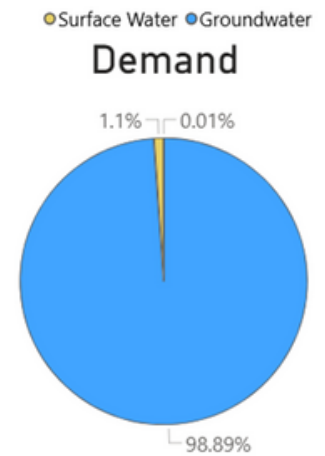
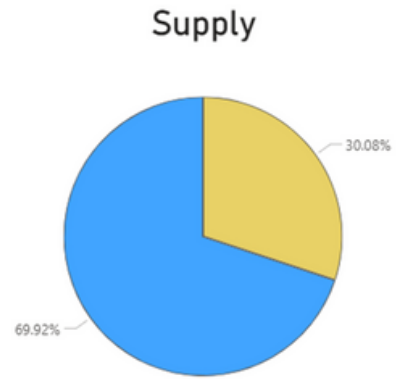
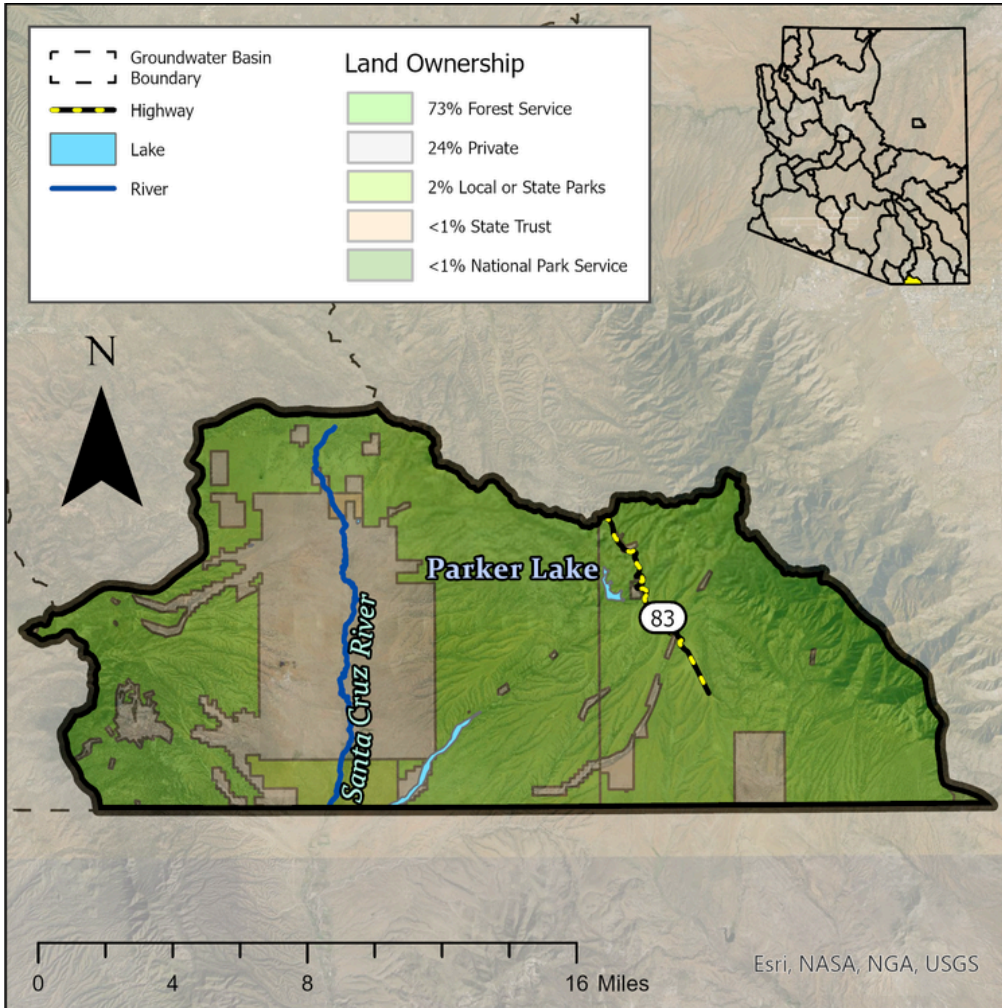
Quick Facts

- The San Rafael Basin covers 229 square miles along the US-Mexico border in Santa Cruz and Cochise Counties.
- Groundwater flows from the basin margins toward the Santa Cruz River, then south to Mexico.
- The San Rafael Basin has an estimated population of 200, and its population centers include Washington Camp and Lochiel.
- The Santa Cruz River is the only perennial stream in the basin, although several intermittent streams are located in the east of the basin.

Groundwater Status

Positive Balance
 +365 AF / year
 Stored: 511,788 AF

The main source of supply in the basin is groundwater. The greatest demand in this basin is municipal.



Projected Groundwater Stored, 2050 - 2075

