

San Bernardino Valley Basin (2023)



Quick Facts

- The San Bernardino Valley groundwater basin covers 387 square miles in Cochise County in the southeastern corner of Arizona.
- The basin is bounded by the Pedregosa and Perilla Mountains on the west, the Peloncillo Mountains and New Mexico border on the east, the Safford basin to the north, and the international border with Mexico to the south.
- Groundwater flows from the mountains at the basin boundaries toward the valley center, then south to Mexico.
- The estimated population was approximately 137 in 2022.
- The basin remains relatively undeveloped, with no agricultural activity and minimal municipal or industrial activity.

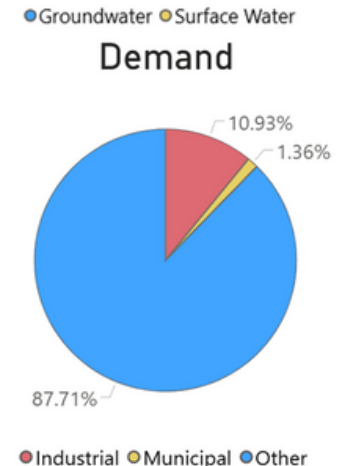
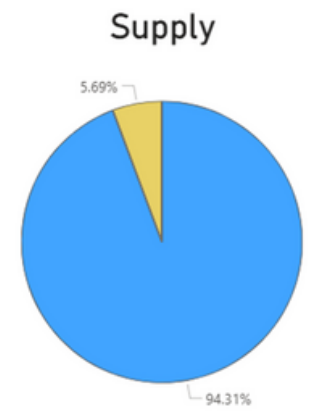
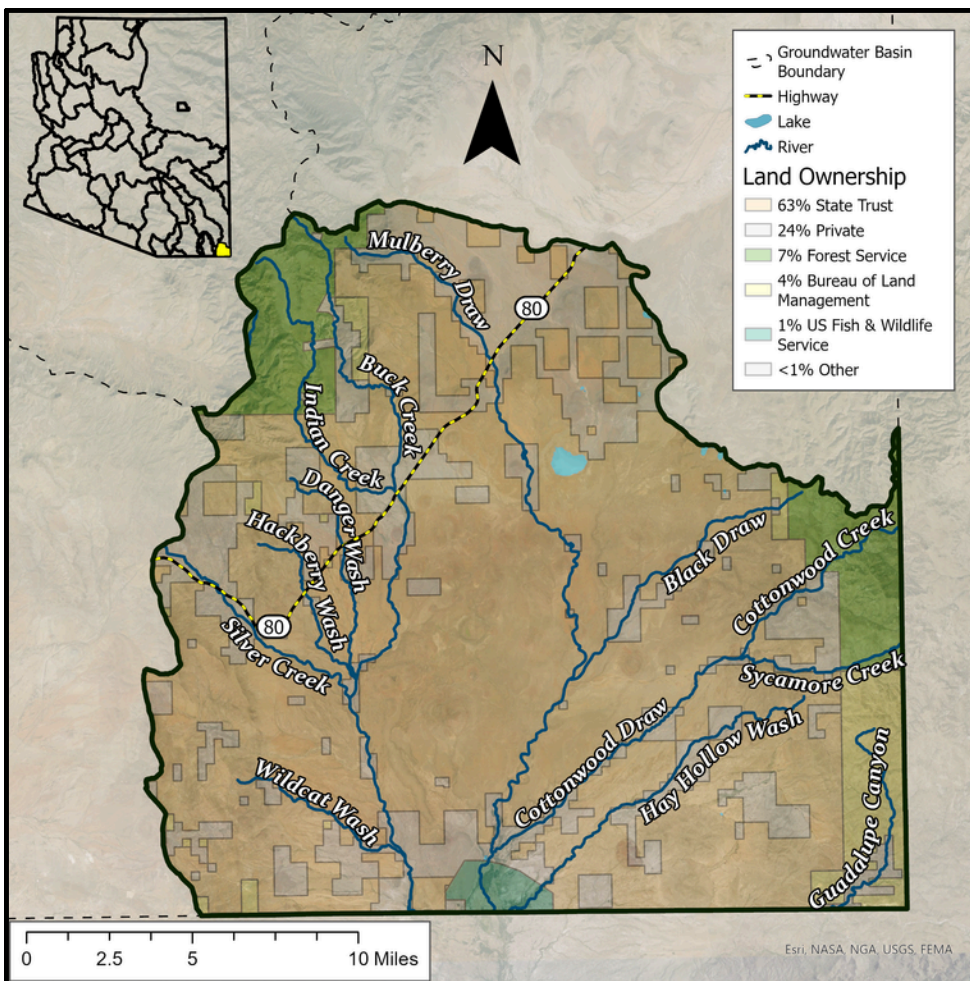
Groundwater Status

Positive Balance

+5,062 AF / year

Stored: Undetermined*

The main source of supply in the basin is groundwater. The greatest demand in this basin is from evapotranspiration in the Other category.



*Due to the complex geology of the San Bernardino Valley basin, ADWR did not estimate the amount of groundwater in storage. However, estimated annual supply volumes are greater than estimated demand values, leading to a potential increase in groundwater storage over the baseline period.