

# Salt River Basin (2025)

## Quick Facts

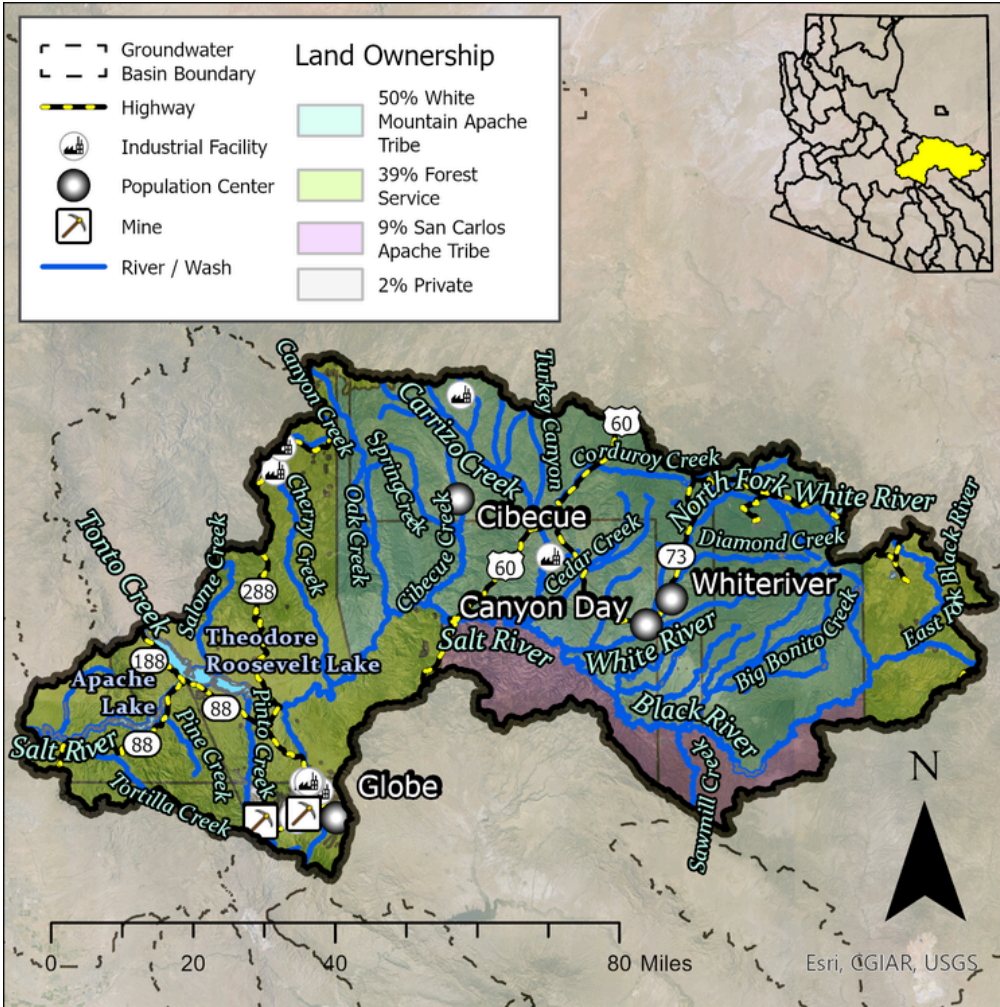
- The Salt River Basin encompasses 5,232 square miles in Gila, Apache, Navajo, Greenlee, Graham, and Maricopa Counties.
- Groundwater typically flows east to west.
- The Salt River runs east to west through the southern part of the basin from the confluence of the White and Black Rivers.
- The basin has an estimated 33,300 residents. The most significant population centers are the towns of Globe and Miami, and the census-designated places of Whiteriver, Cibecue, and Canyon Day.

## Groundwater Status

**Positive Balance**

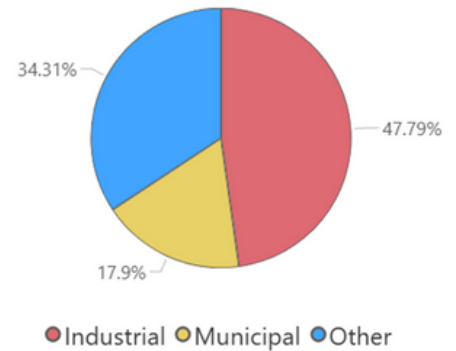
**+116,132 AF / year**

**Stored: 631,000 AF**

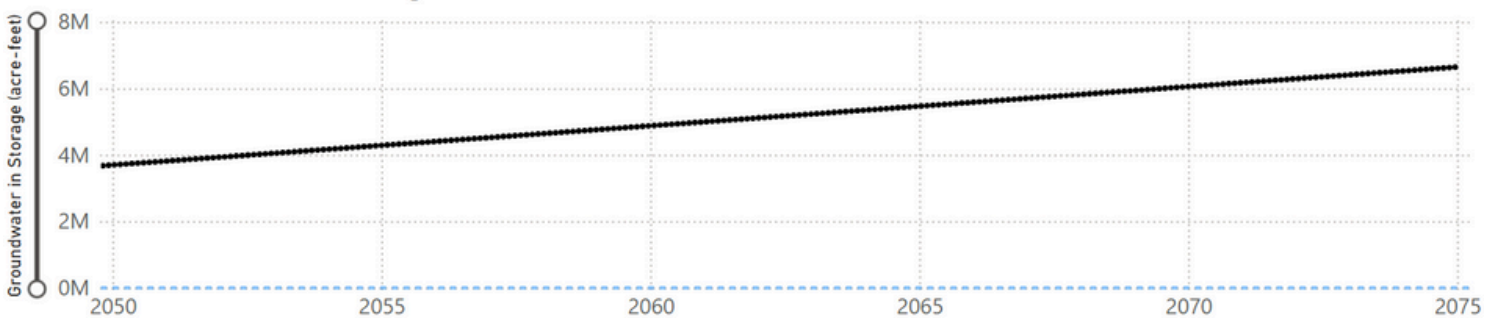


The distribution of supply (surface water vs. groundwater and other sources) in the basin is unknown. The greatest demand in this basin is industrial.

## Demand



## Projected Groundwater Stored, 2050 - 2075



Projection Scenario: Status Quo