

# Safford Basin (2025)



## Quick Facts

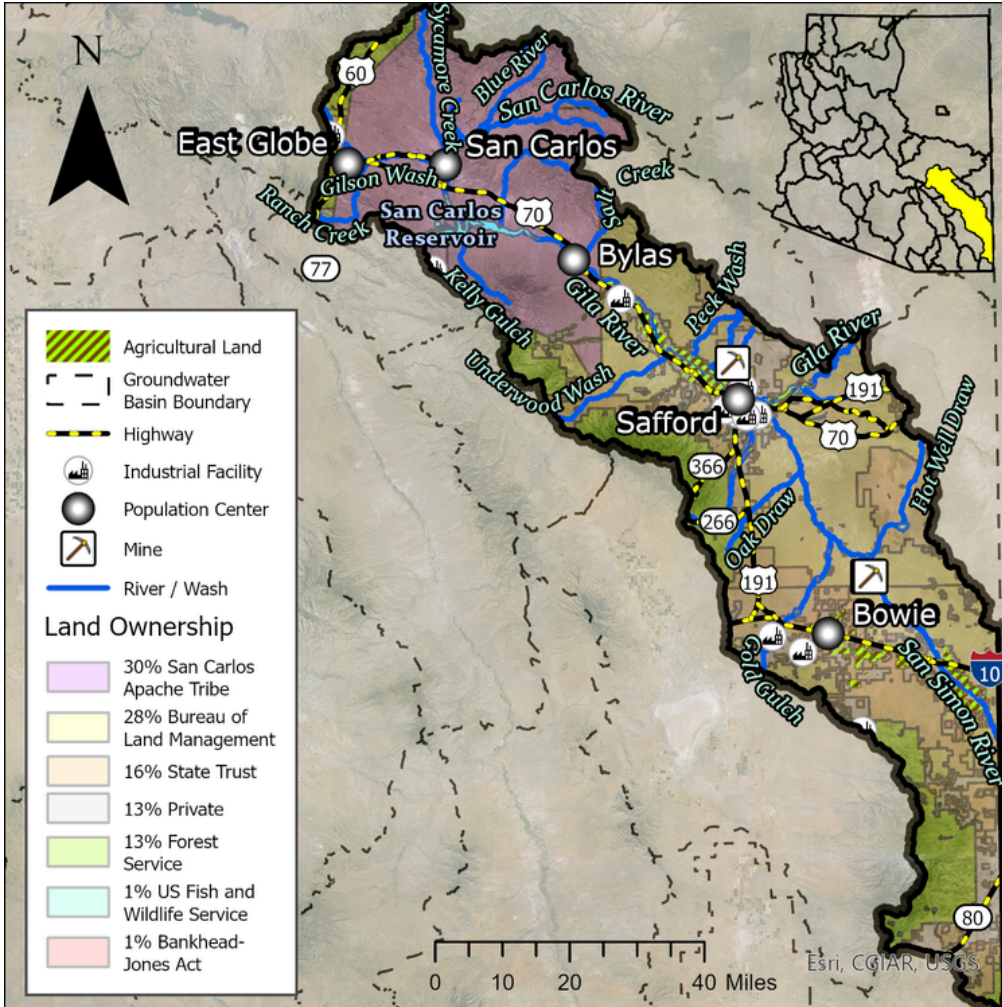
- The Safford Basin encompasses 4,747 square miles within Cochise, Gila, Graham, Pinal, and Greenlee Counties.
- Groundwater flows from mountain fronts down to the Gila River.
- The basin's major stream, the Gila River, runs northwest from Greenlee County to the San Carlos Reservoir. The San Simon Creek runs through the San Simon Valley south of the City of Safford.
- The basin has an estimated 29,139 residents, with the largest population centers being the towns of Safford, Thatcher, and Solomon.

## Groundwater Status

**Positive Balance**

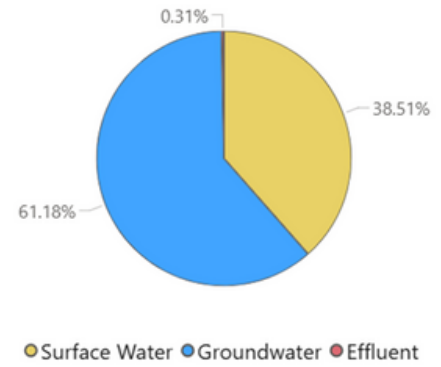
**+1,821 AF / year**

**Stored: 4.6 MAF**

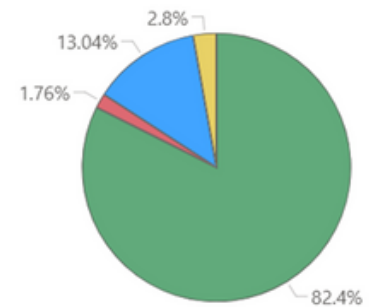


The main source of supply in the basin is groundwater. The greatest demand in this basin is agricultural.

## Supply



## Demand



## Projected Groundwater Stored, 2050 - 2075

