

# Sacramento Valley Basin (2025)

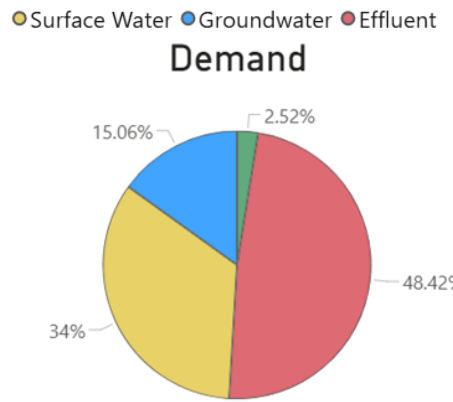
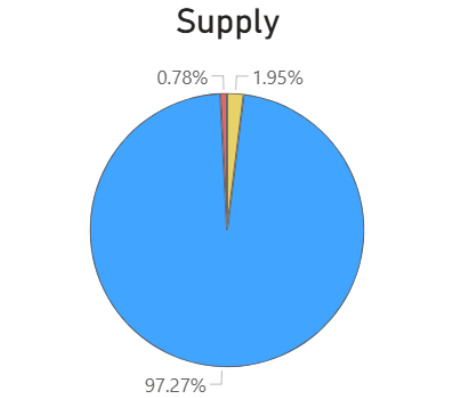
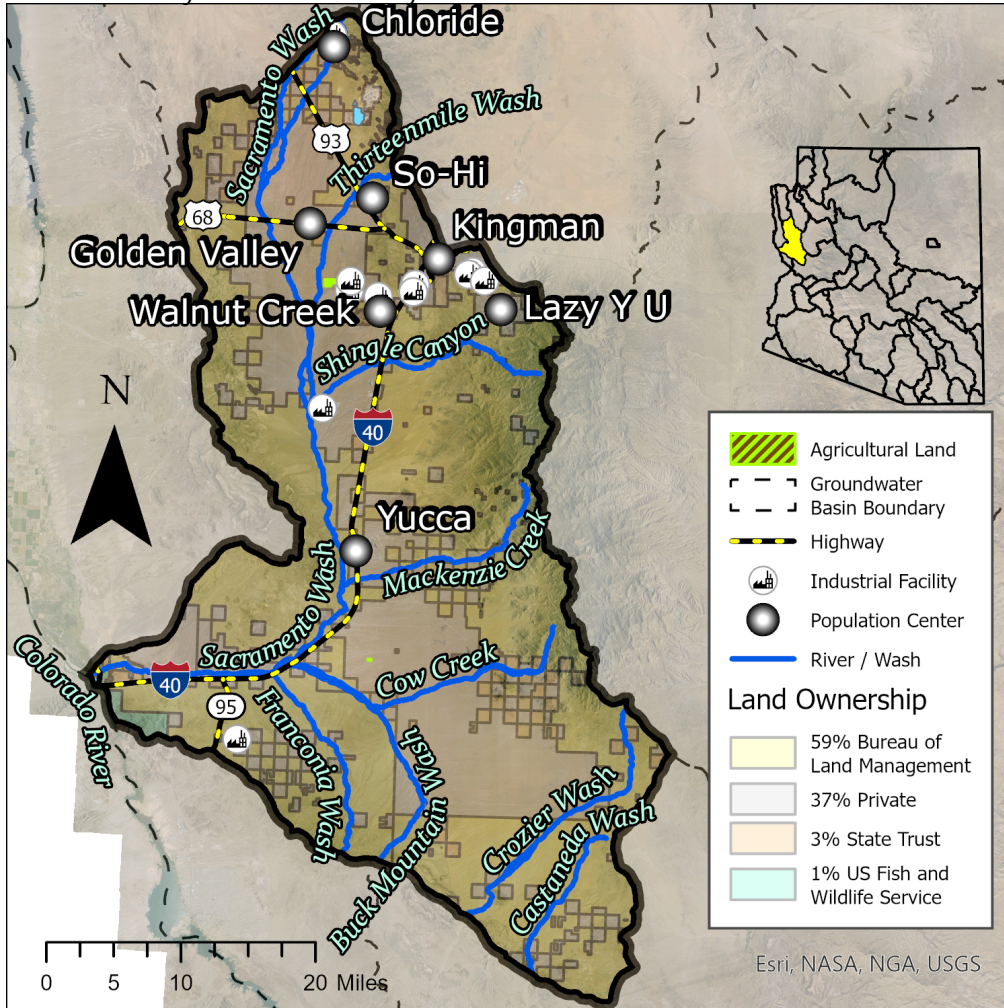


## Quick Facts

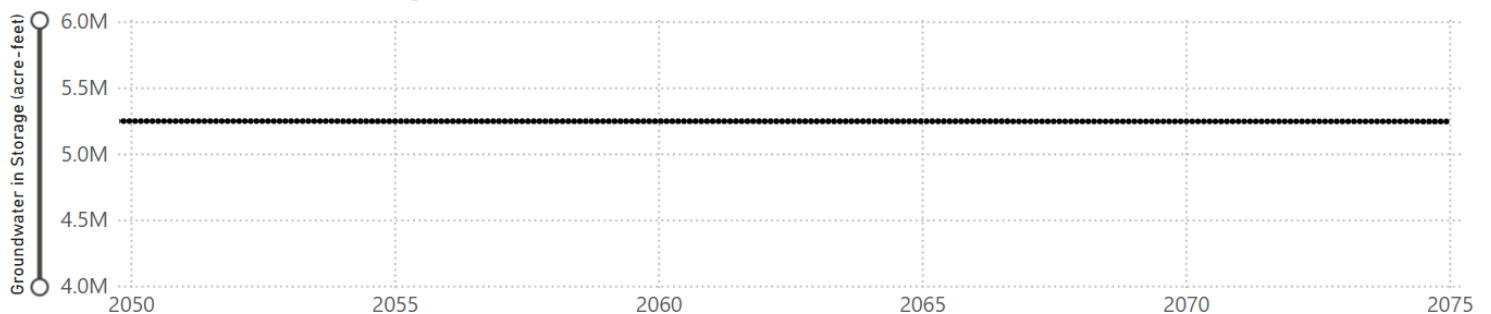
- The Sacramento Valley Basin encompasses 1,587 square miles within Mohave County.
- Groundwater typically flows from higher to lower elevations throughout the basin.
- The basin consists of the Sacramento Wash running north to south, then east to west near Yucca. The Colorado River runs along a small length of the basin's far western border.
- The basin has an estimated 28,130 residents. The largest population centers in the basin are the City of Kingman and the unincorporated community of Golden Valley.

**Groundwater Status**  
**Negative Balance**  
 -10,866 AF / year  
 Stored: 5.3 MAF

The main source of supply in the basin is groundwater. The greatest demand in this basin is industrial.



## Projected Groundwater Stored, 2050 - 2075



Projection Scenario: Status Quo