

Prescott AMA (2024)



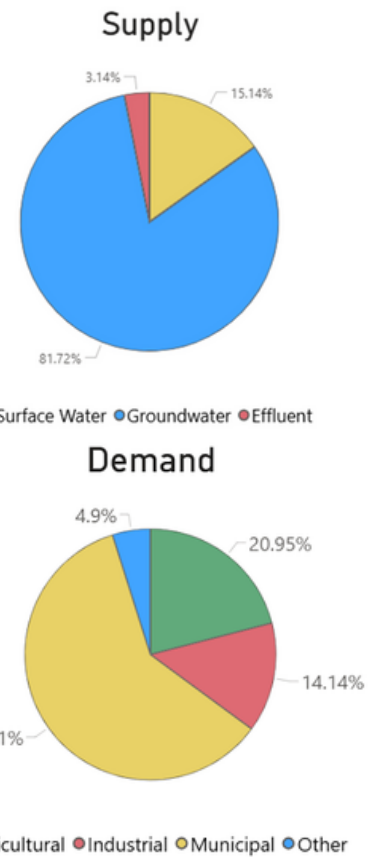
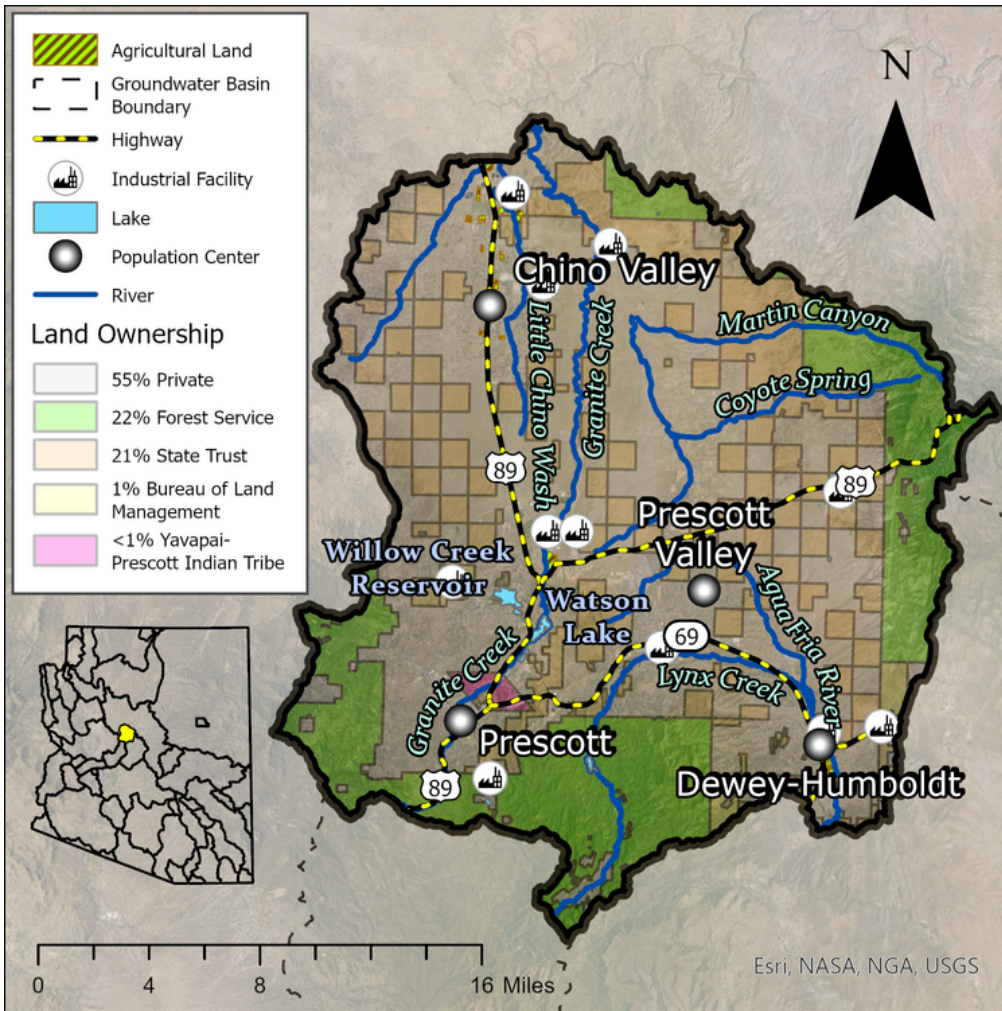
Quick Facts

- The Prescott Active Management Area (AMA) covers 485 square miles in the Central Highlands of Yavapai County.
- Groundwater flows from the mountain fronts on the basin boundary toward the center. Groundwater flows north in the Little Chino Valley subbasin and south in the Upper Agua Fria subbasin.
- The Prescott AMA has an estimated 134,264 residents, with Prescott and Prescott Valley being the largest cities within the basin.
- The headwaters of the Agua Fria River are in the Prescott AMA.

Groundwater Status

Positive Balance
+11,310 AF / year
Stored: 11.4 MAF

The main source of supply in the basin is groundwater. The greatest demand in this basin is municipal.



Projected Groundwater Stored, 2050 - 2075

