

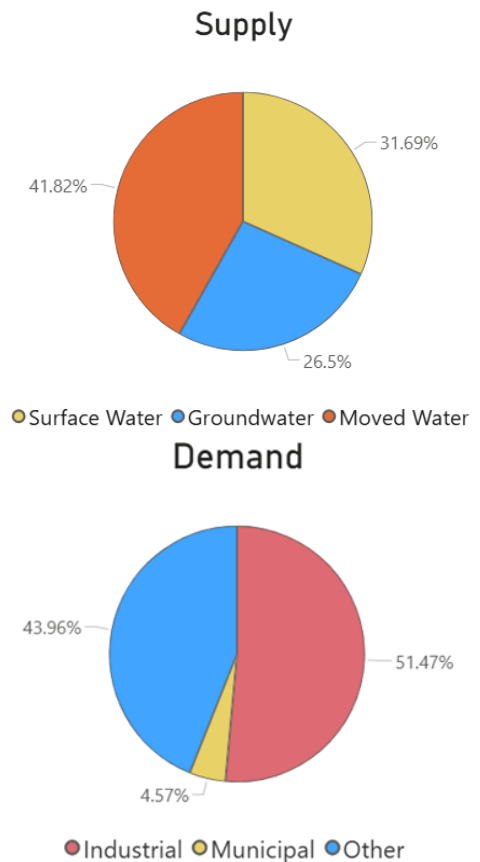
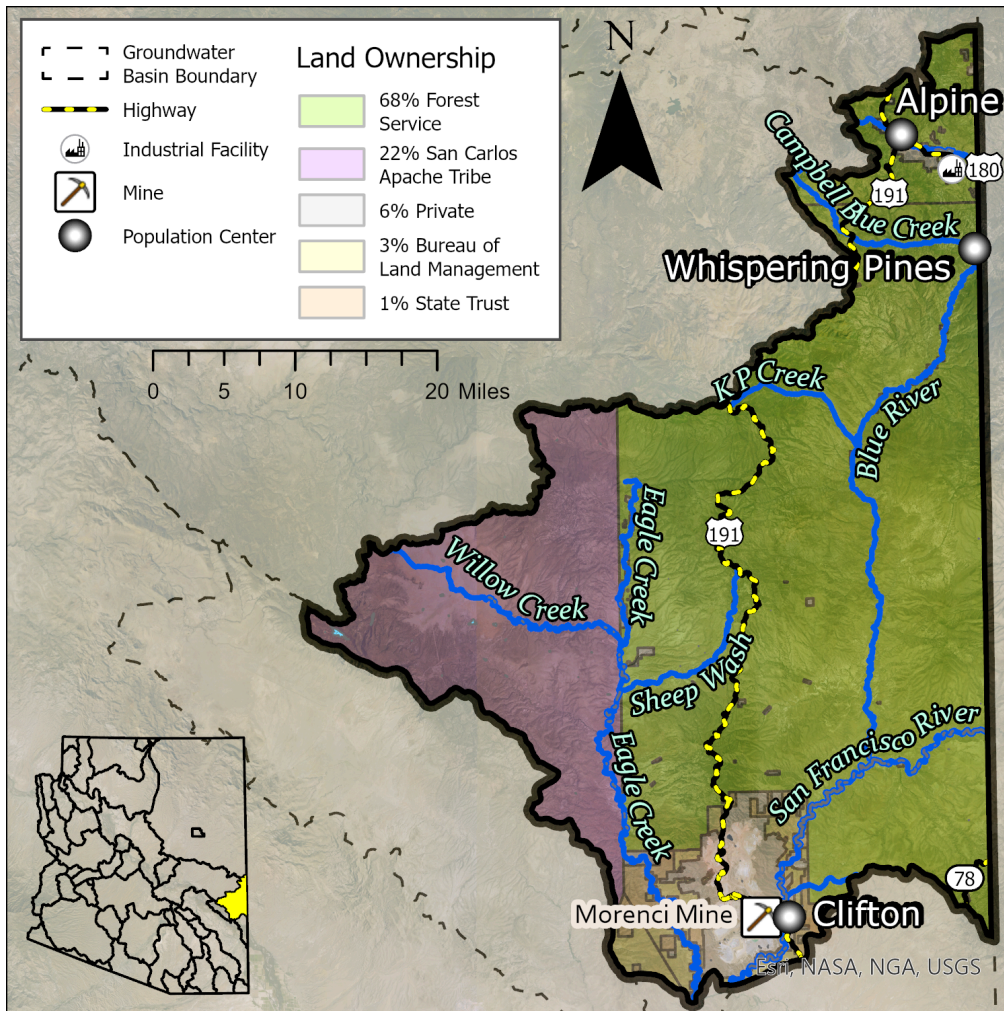
Morenci Basin (2025)

Quick Facts

- The Morenci Basin encompasses 1,599 square miles within Greenlee, Graham, and Apache counties.
- Groundwater typically flows south to southwest towards the Gila River.
- The basin includes the San Francisco River, which runs from west to east in Apache County, and east to south near the Town of Clifton. Eagle Creek flows near the boundary between Graham and Greenlee counties. The Blue River is just south of the Apache county line, flowing south through the basin to join the San Francisco River.
- The Morenci Basin has an estimated 4,254 residents, with the largest centers being the Town of Clifton and the unincorporated community of Morenci.

Groundwater Status
Undetermined*

The main source of supply in the basin is moved water from the Salt River Basin. The greatest demand in the Morenci Basin is industrial.



*ADWR has assessed various water supply components in the Morenci Basin, including streamflow, streamflow infiltration, and groundwater inflow, as well as various demand sectors. However, ADWR has not estimated the amount of groundwater in storage due to a lack of available water level measurements. The lack of groundwater storage data prevents the complete combination of supply and demand results into a comprehensive picture of the basin's overall water budget.