

Lower San Pedro Basin (2024)



Quick Facts

- The Lower San Pedro Basin is a 1,624-square-mile basin covering areas of Cochise, Pima, Graham, Pinal, and Gila Counties.
- Groundwater flows from the mountain fronts towards the San Pedro River, then trends north. The San Pedro River runs north from the Cascabel area and joins the Gila River at the town of Winkelman.
- The Lower San Pedro Basin has an estimated population of 11,853.
- While groundwater is the main water supply in the basin, there are significant surface water diversions from the San Pedro River and its tributaries, which have both perennial and intermittent reaches.

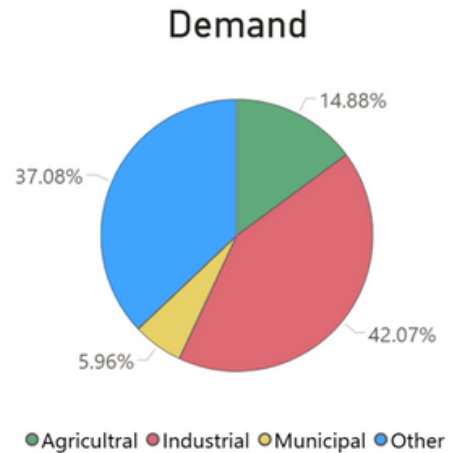
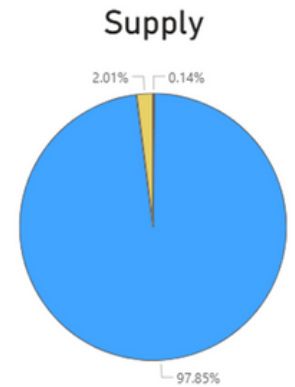
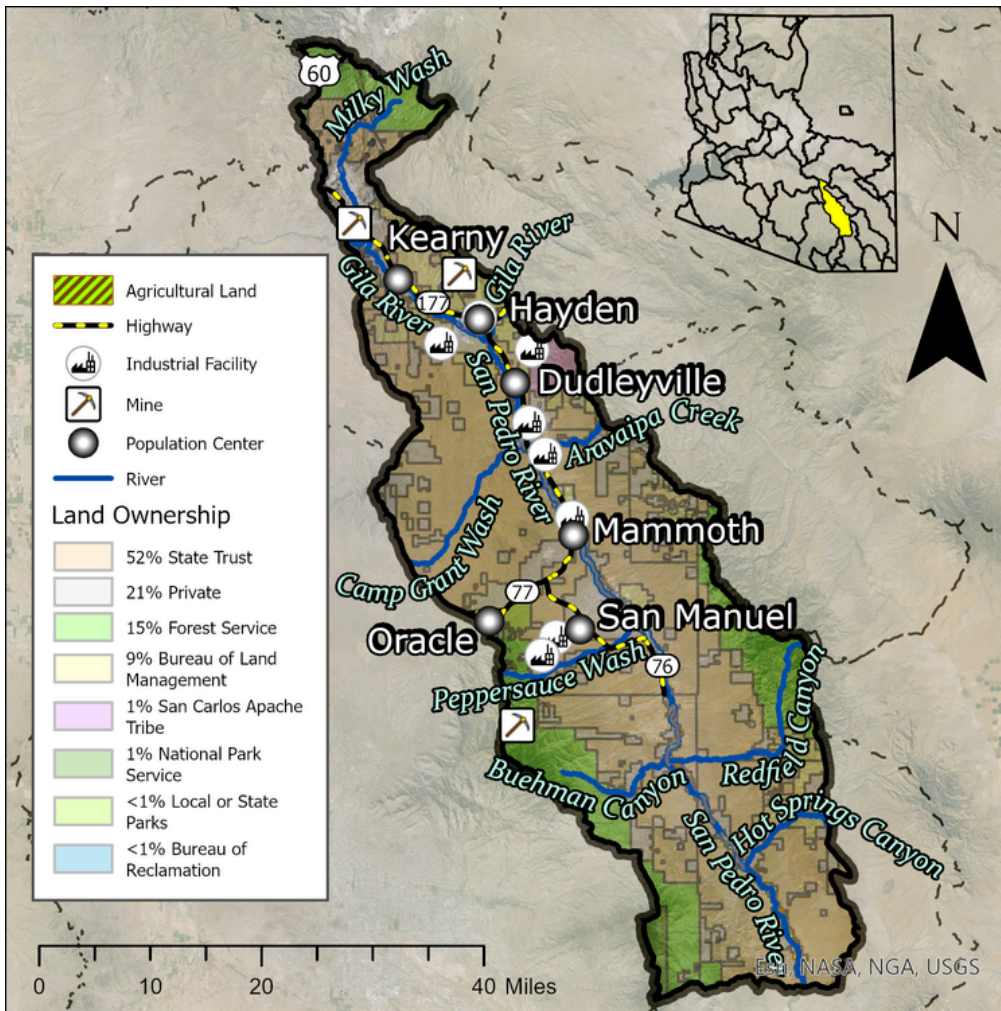
Groundwater Status

Negative Balance

-17,813 AF / year

Stored: 3.4 MAF

The main source of supply in the basin is groundwater. The greatest demand in this basin is industrial.



Projected Groundwater Stored, 2050 - 2075

