

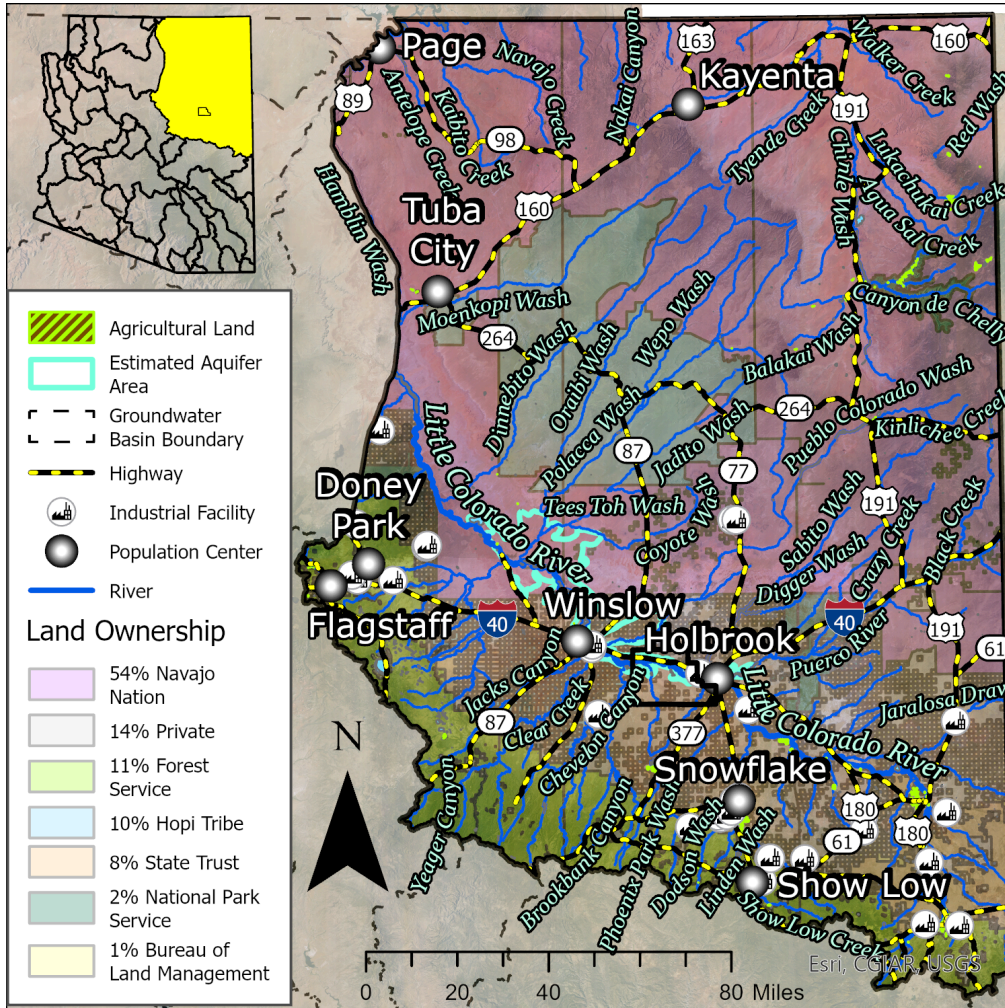


Little Colorado River Plateau Basin (2025)

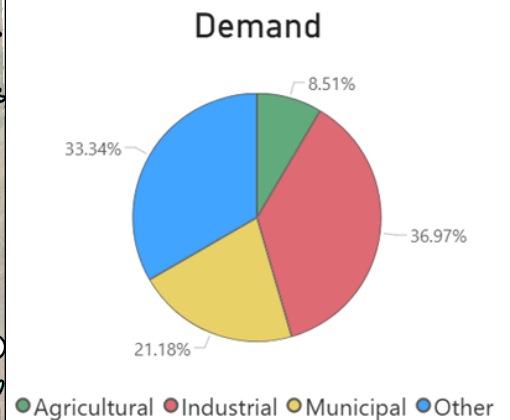
Quick Facts

- The Little Colorado River Plateau Basin encompasses 26,700 square miles within Apache, Coconino, and Navajo Counties.
- Groundwater typically flows west to northwest.
- The Little Colorado River is the major drainage in the basin, flowing perennially near its headwaters and below Silver Creek. Numerous other perennial streams are found at higher elevations in the basin.
- The basin has a total population of 272,231. A significant portion of residents live within the Navajo Nation Reservation, Hopi Tribe Reservation, San Juan Southern Paiute Tribe lands, and Pueblo of Zuni lands.

Groundwater Status
Negative Balance
 -81,774 AF / year
 Stored: 70.0 MAF



The distribution of supply (surface water vs. groundwater and other sources) in the basin is unknown. The greatest demand in this basin is industrial.



Projected Groundwater Stored, 2050 - 2075

