

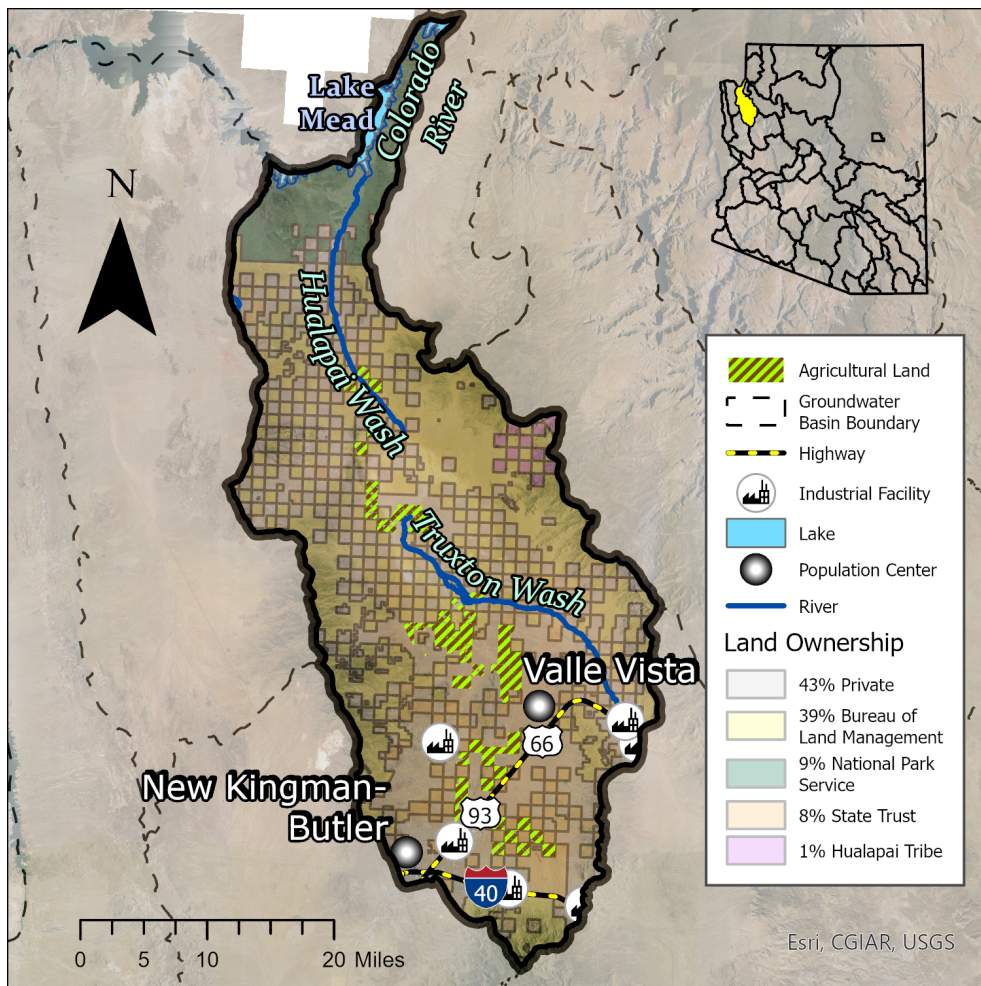
# Hualapai Valley Basin (2025)

## Quick Facts

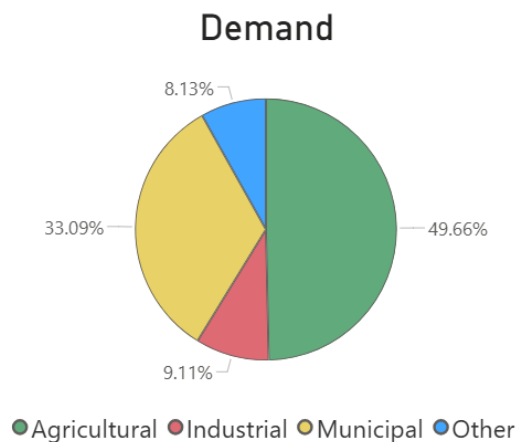
- The Hualapai Valley Basin encompasses 1,212 square miles within Mohave County.
- Groundwater typically flows south to north in the basin.
- The southern portion of the basin is drained by an ephemeral watercourse, Truxton Wash, which flows north and debouches after heavy precipitation into the normally dry Red Lake Playa, underneath which exists a large salt body.
- The basin has an estimated population of 46,492. The largest population center is the city of Kingman, which is centered in the Sacramento Valley Basin but extends into the Hualapai Valley Basin. A small portion of Hualapai Valley residents live on the federally recognized Hualapai Indian Reservation.

**Groundwater Status**

**Negative Balance**  
-41,992 AF / year  
Stored: 2.1 MAF



The distribution of supply (surface water vs. groundwater and other sources) in the basin is unknown. The greatest demand in the basin is agricultural.



## Projected Groundwater Stored, 2050 - 2075

