



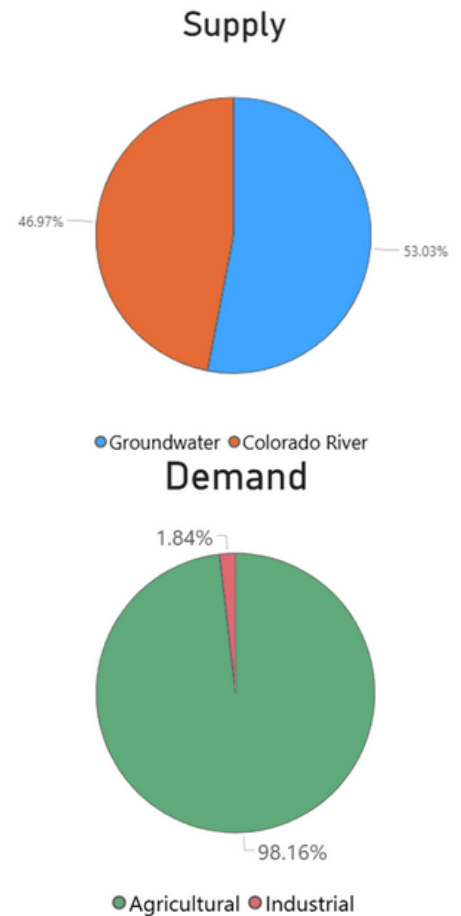
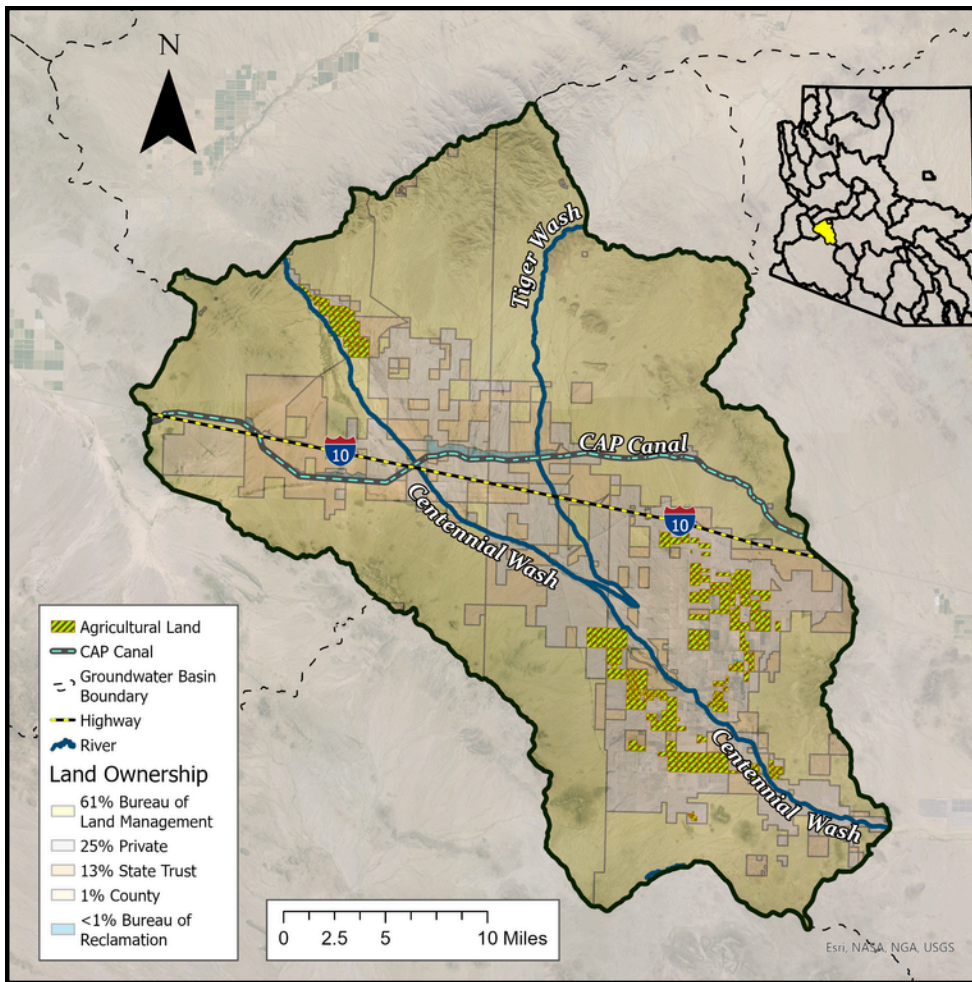
Harquahala INA Basin (2023)

Quick Facts

- The Harquahala basin lies within La Paz and Maricopa Counties in west-central Arizona, in an area of approximately 766 square miles.
- The basin is bounded by the Harquahala Mountains to the north, the Big Horn Mountains to the east, the Eagletail Mountains to the south, and the Little Harquahala Mountains to the west.
- Groundwater flow in the northern part of the basin is generally from northwest to southeast. In the southeastern region, the flow is northwest toward a very large cone of depression.
- Centennial Wash, a tributary of the Gila River, drains the basin.
- The basin is sparsely populated with an estimated 561 residents.

Groundwater Status
Negative Balance
 -93,655 AF / year
Stored: 4.8 MAF

The main source of supply in the basin is groundwater. The greatest demand in this basin is agricultural.



Projected Groundwater Stored, 2050 - 2075

