

Gila Bend Basin (2024)

Quick Facts

- The Gila Bend Basin is located in west central Arizona about 50 miles southwest of Phoenix. The basin comprises 1,284 square miles within Maricopa County.
- Groundwater regionally flows away from the mountainous regions in a southwesterly direction, exiting the basin south of the Painted Rock Mountains.
- The basin had a population of 4,256 people in 2000, about half of whom resided in the Town of Gila Bend.
- Effluent from the City of Phoenix, irrigation return water, and sporadic releases from dams further upstream flow into the Gila River.

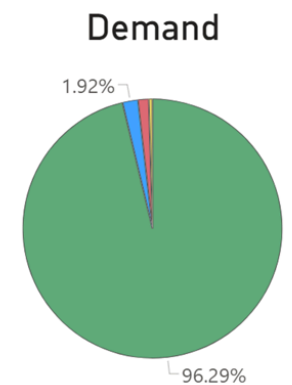
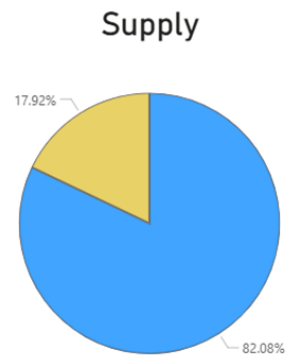
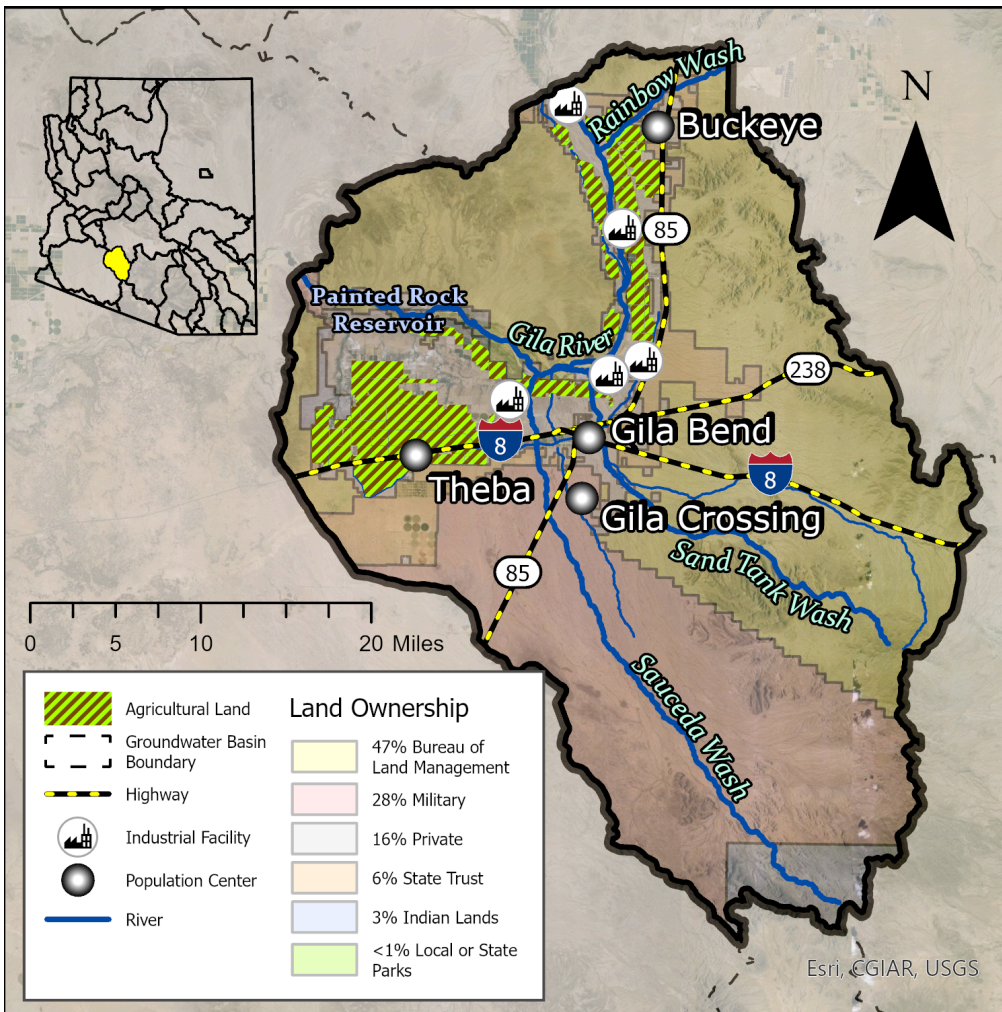
Groundwater Status

Negative Balance

-173,493 AF / year

Stored: 8.8 MAF

The main source of supply in the basin is groundwater. The greatest demand in this basin is agricultural.



● Agricultural ● Other ● Industrial ● Municipal

Projected Groundwater Stored, 2050 - 2075

