

# Duncan Valley Basin (2025)



## Quick Facts

- The Duncan Valley Basin encompasses 550 square miles, mostly within Greenlee County.
- Groundwater typically flows north to west.
- The Gila River is the only perennial stream located in the northern portion of the basin. It flows north from the New Mexico border through Duncan, later exiting the Basin west of York.
- The basin has an estimated population of 3,272. The largest population centers are the Town of Duncan and the unincorporated community of Sheldon.

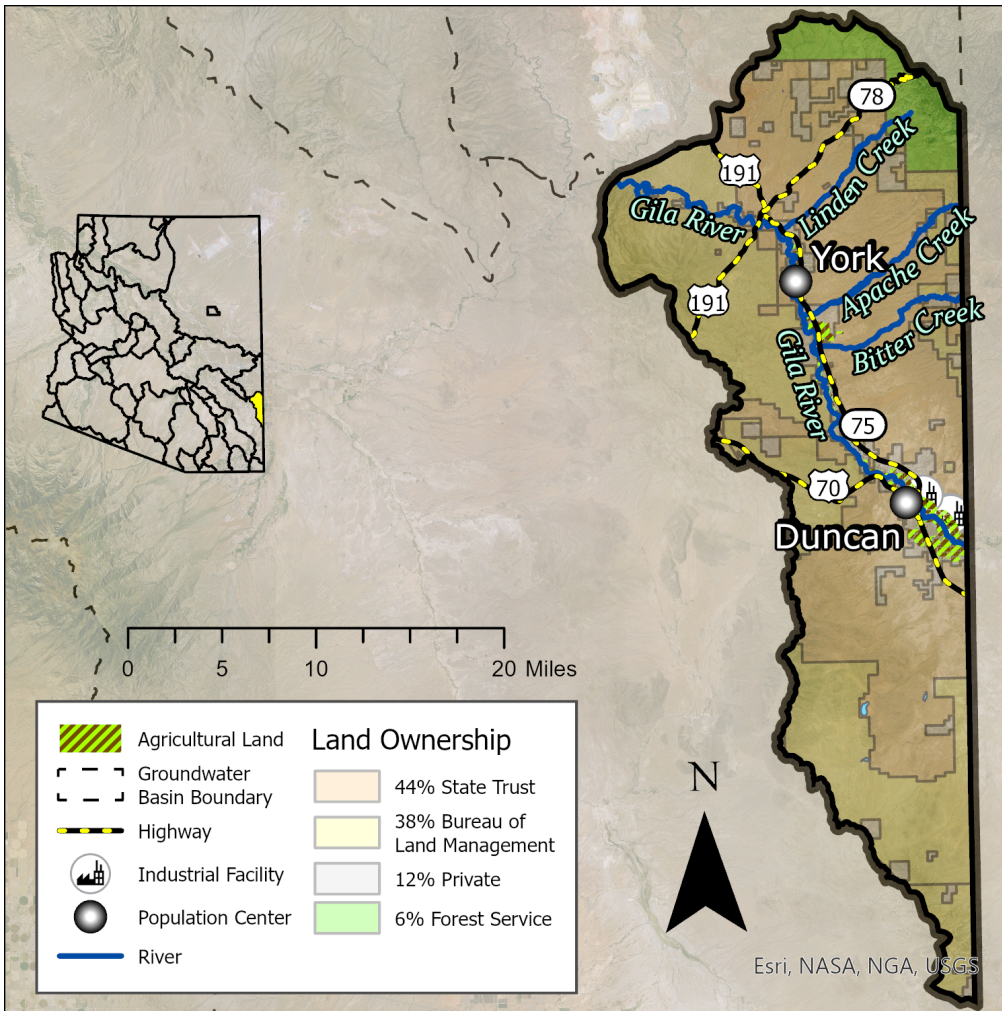
## Groundwater Status

**Positive Balance**

**+68,742 AF / year**

**Stored: 690,000 AF**

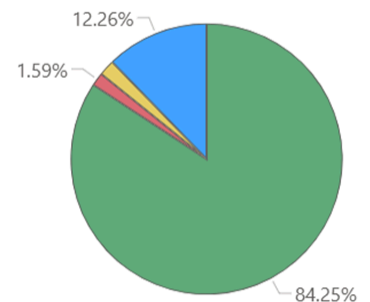
Supply in this basin is evenly split between surface water and groundwater. The greatest demand in this basin is agricultural.



## Supply



## Demand



## Projected Groundwater Stored, 2050 - 2075

