

Dripping Springs Wash Basin (2025)



Quick Facts

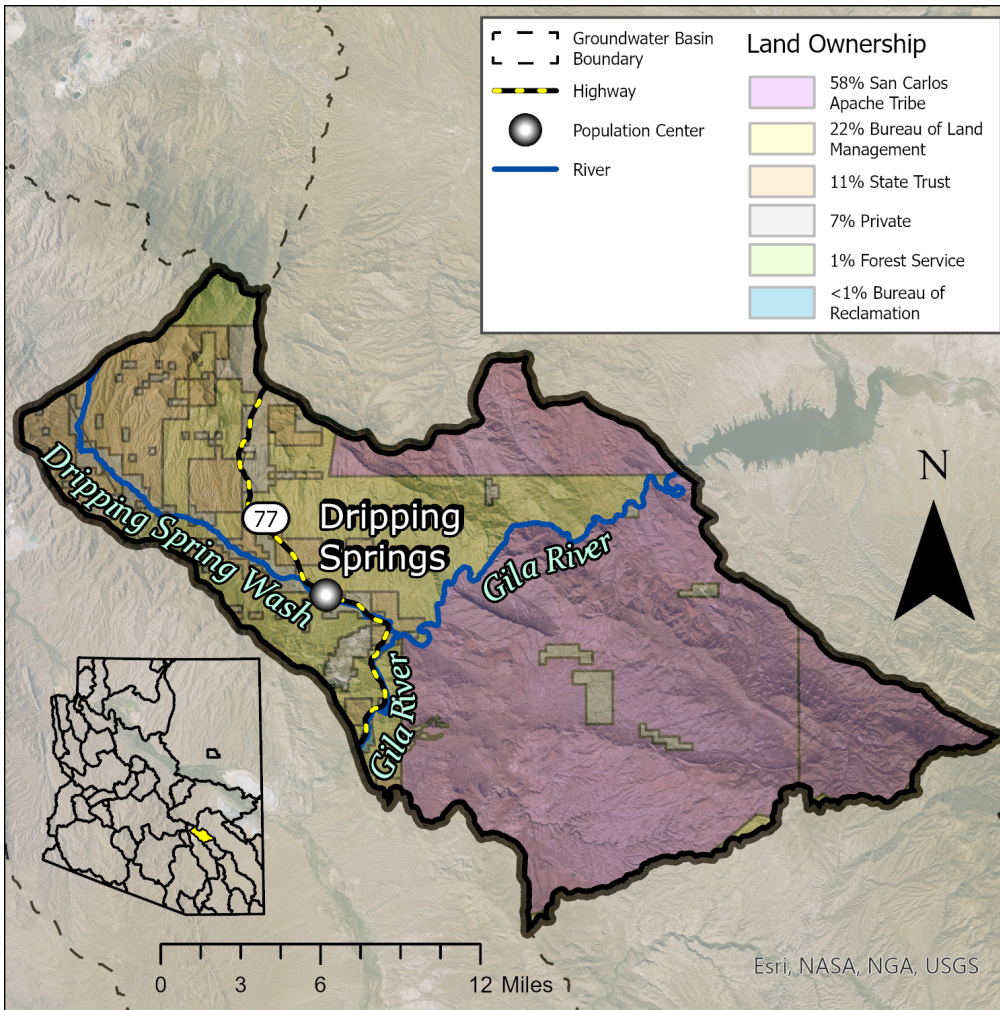
- The Dripping Springs Wash Basin encompasses 378 square miles in Pinal, Gila and Graham Counties.
- Groundwater flows toward the center of the basin, where outflow occurs along the Gila River.
- The two perennial streams in the Dripping Springs Wash Basin are the Gila River and Mescal Creek.
- The basin has an estimated population of 328, with no major population centers.

Groundwater Status

Negative Balance

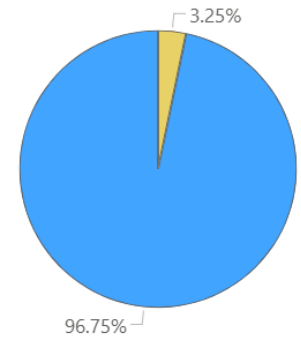
-2,318 AF / year

Stored: 209,000 AF

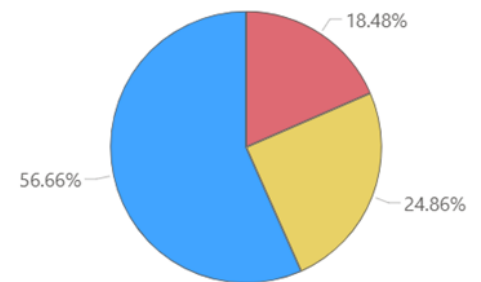


The main source of supply in the basin is groundwater. The greatest demand in this basin is from riparian evapotranspiration in the Other category.

Supply



Demand



Projected Groundwater Stored, 2050 - 2075

