

Douglas AMA (2023)



Quick Facts

- The Douglas Active Management Area (AMA) spans approximately 950 square miles and lies within Cochise County.
- The Douglas AMA is bounded on the east by the Swisshelm, Pedregosa, and Perilla Mountains and on the west by the Mule and Dagoon Mountains.
- Groundwater flows towards areas of the basin where pumping is concentrated and south towards Mexico.
- An estimated 23,852 people live within the Douglas AMA, with the majority residing within the city of Douglas.
- The former Douglas Irrigation Non-expansion Area (INA) was fully contained in the Douglas AMA but did not cover the entire area. In 2022, when the Douglas Active Management Area (AMA) was established by local election, the boundaries of the regulated area were expanded to encompass the entire basin.

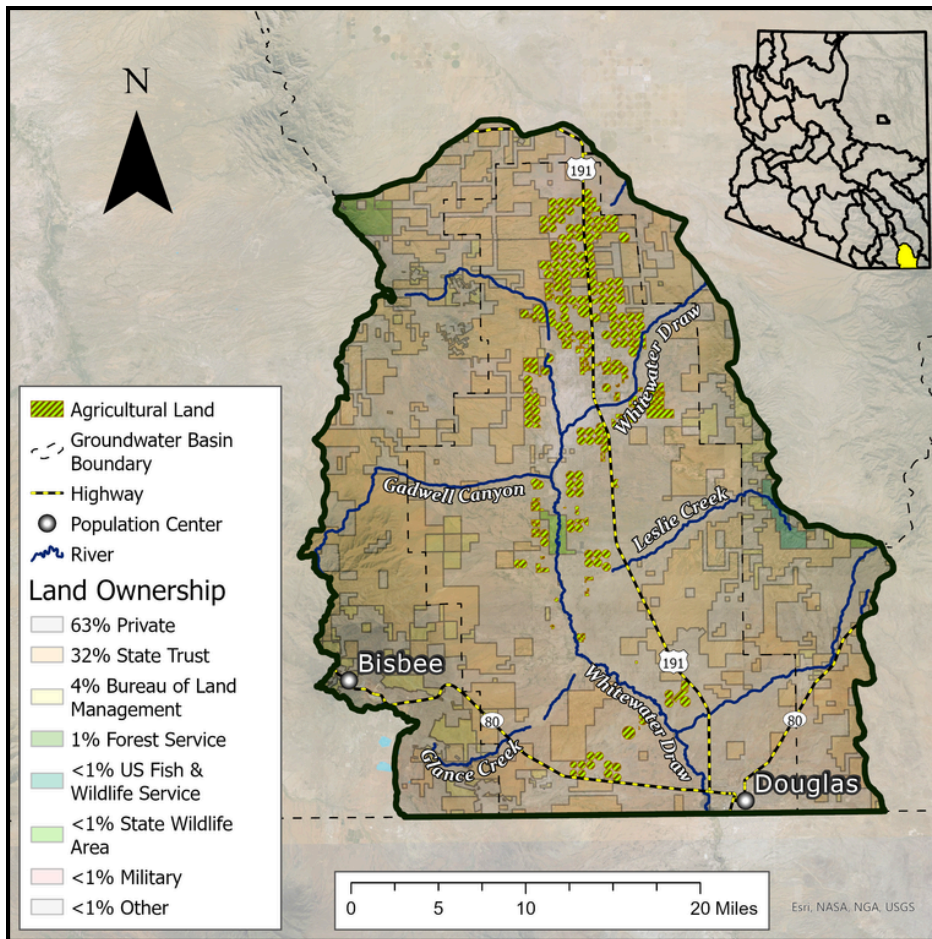
Groundwater Status

Negative Balance

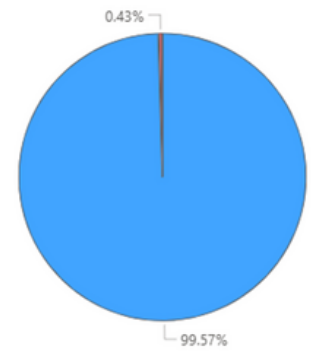
-45,324 AF / year

Stored: 7.8 MAF

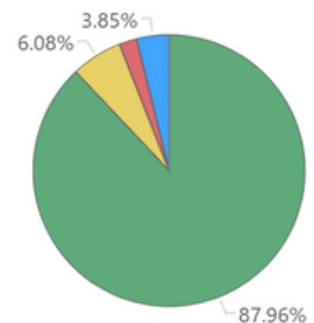
The main source of supply in the basin is groundwater. The greatest demand in this basin is agricultural.



Supply



Demand



● Agricultural ● Municipal ● Industrial ● Other

Projected Groundwater Stored, 2050 - 2075

