

Donnelly Wash Basin (2024)

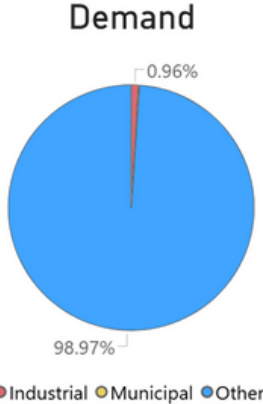
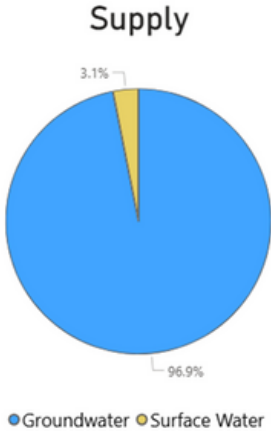
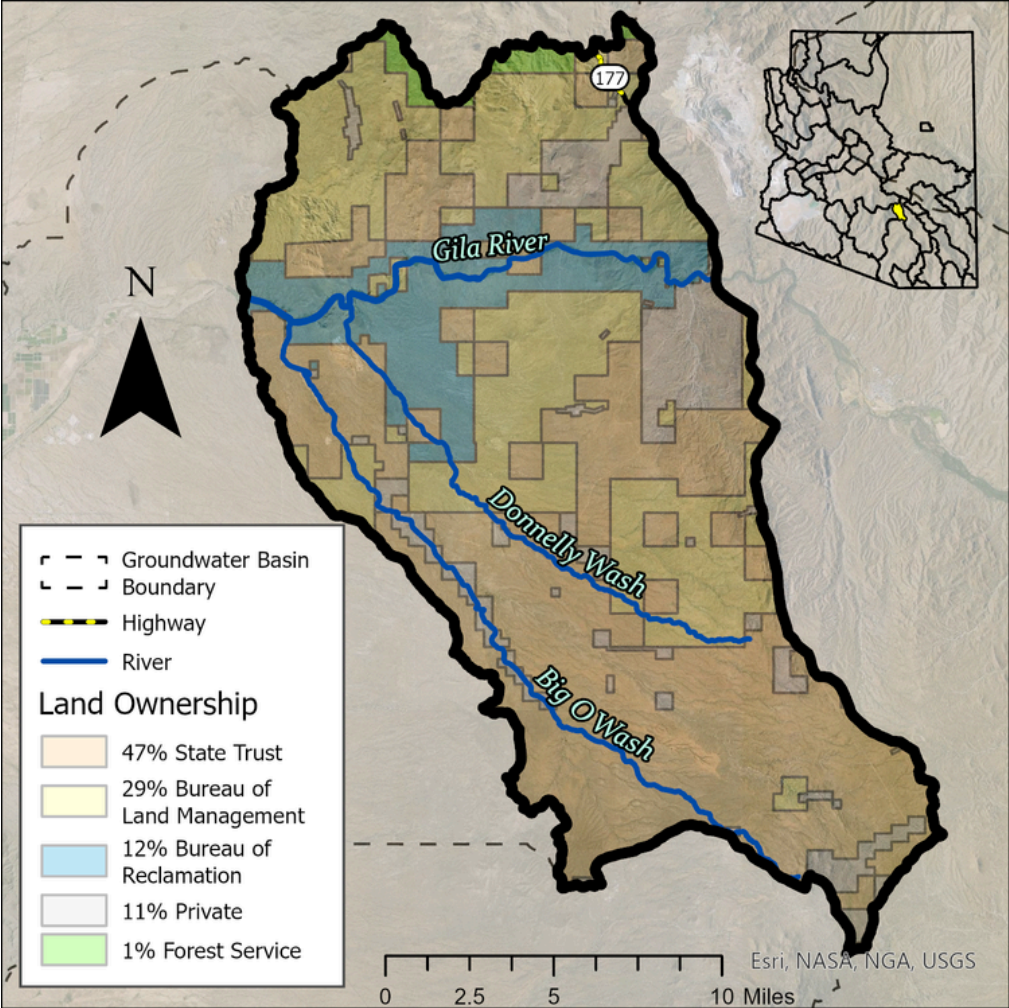


Quick Facts

- The Donnelly Wash Basin encompasses 293 square miles in Pinal County.
- The Gila River runs through the basin and Cochran, Arizona. The Gila River is a perennial stream flowing east to west, regulated by the Coolidge Dam.
- The basin has no current population centers and approximately 145 residents.

Groundwater Status
Undetermined*

The main source of supply in the basin is groundwater. The greatest demand in this basin is evapotranspiration from the other category.



*ADWR has assessed various water supply components in the Donnelly Wash Basin, including streamflow, streamflow infiltration, groundwater outflow, and mountain front recharge. However, the basin's complex geological nature has prevented the estimation of groundwater storage, which limits the ability to thoroughly combine supply and demand results into a comprehensive water budget.