

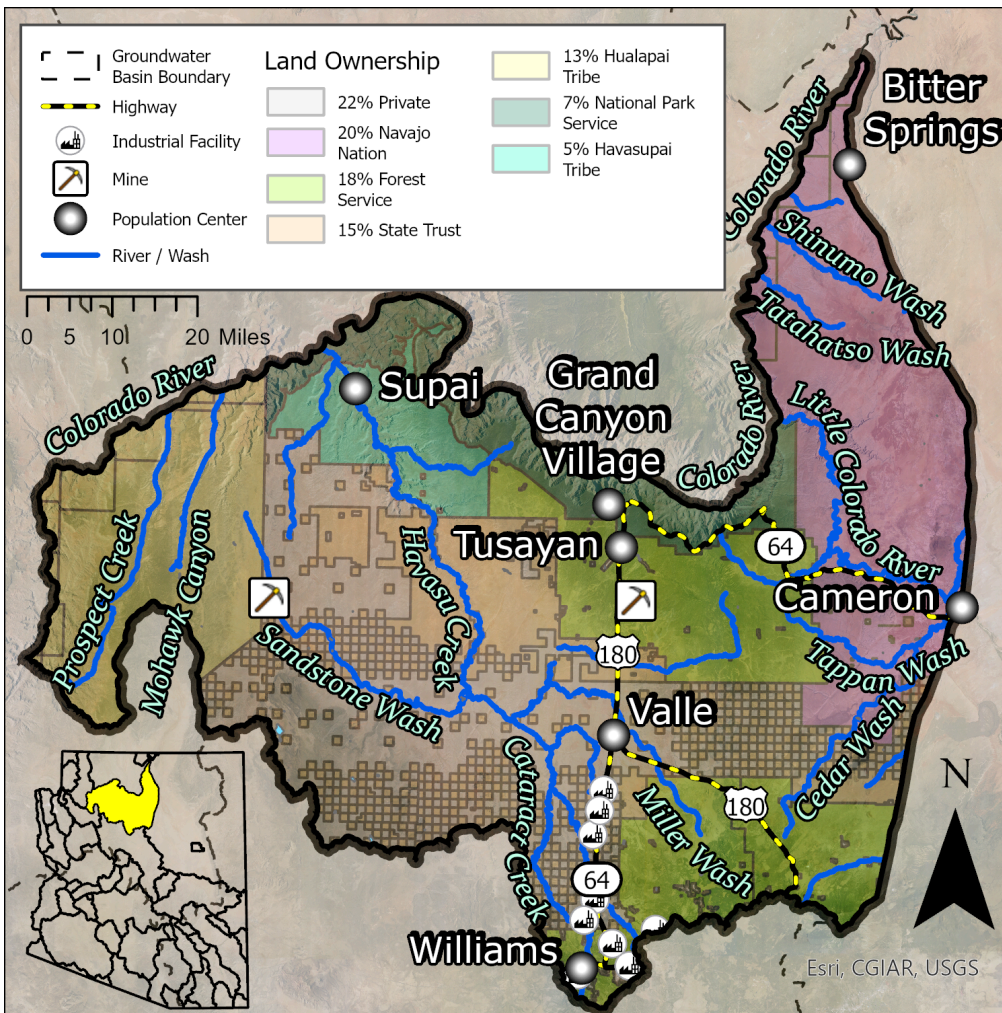
Coconino Plateau Basin (2025)



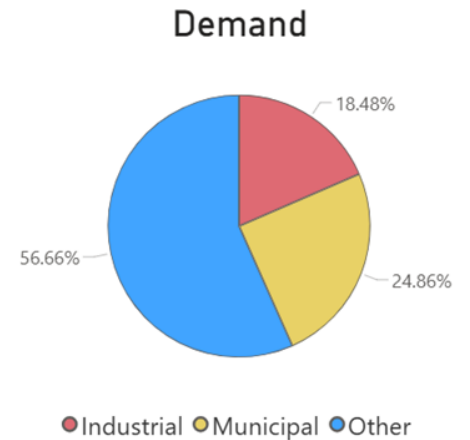
Quick Facts

- The Coconino Plateau Basin encompasses 5,812 square miles within Coconino County.
- Groundwater typically flows south to north.
- The basin has numerous streams that flow south to north, eventually reaching the Grand Canyon and Colorado River. Major streams in the basin include Havasu Creek and the Little Colorado River.
- The basin has an estimated population of 8,060. Williams and Grand Canyon Village are the largest population centers in the Basin.

**Groundwater Status
Undetermined***



The distribution of supply (surface water vs. groundwater and other sources) in the basin is unknown. The greatest demand in this basin is from riparian evapotranspiration in the Other category.



*ADWR has assessed various water supply components in the Coconino Plateau Basin, including streamflow, streamflow infiltration, and groundwater inflow, as well as various demand sectors. However, ADWR has not estimated the amount of groundwater in storage due to a lack of available water level measurements. The lack of groundwater storage data prevents the complete combination of supply and demand results into a comprehensive picture of the basin's overall water budget.