

Cienega Creek Basin (2024)



Quick Facts

- The Cienega Creek Basin encompasses 606 square miles in southeastern Arizona within Cochise, Pima, and Santa Cruz Counties.
- A groundwater divide separates the Sonoita Creek and Upper Cienega Creek drainages. North of the town of Sonoita, groundwater generally flows towards the northeast. South of Sonoita, groundwater flows south.
- The basin has an estimated population of 4,983. The largest population centers are the Town of Patagonia and the census-designated place of Sonoita in Santa Cruz County.
- In addition to with several intermittent streams, eight major springs are located in the basin.

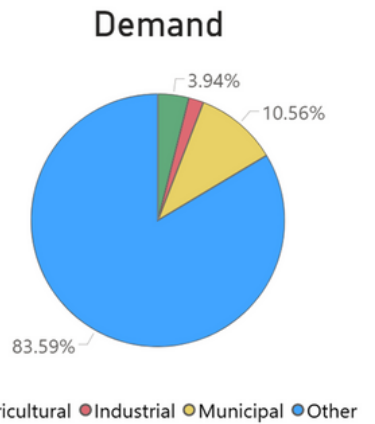
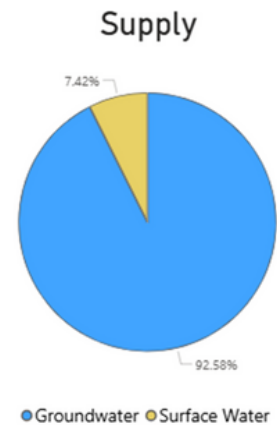
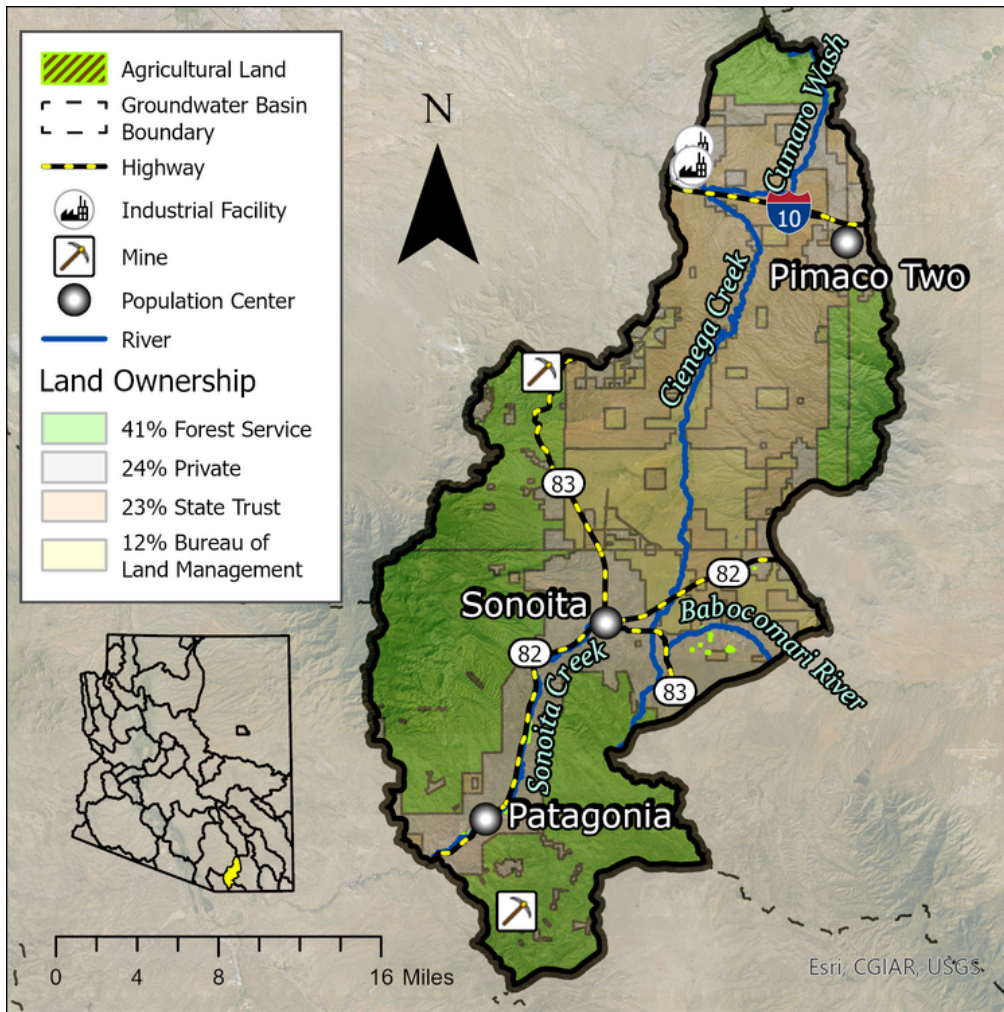
Groundwater Status

Positive Balance

+43 AF / yr

Stored: 2.6 MAF

The main source of supply in the basin is groundwater. The greatest demand in this basin is evapotranspiration from the other category.



Projected Groundwater Stored, 2050 - 2075

