

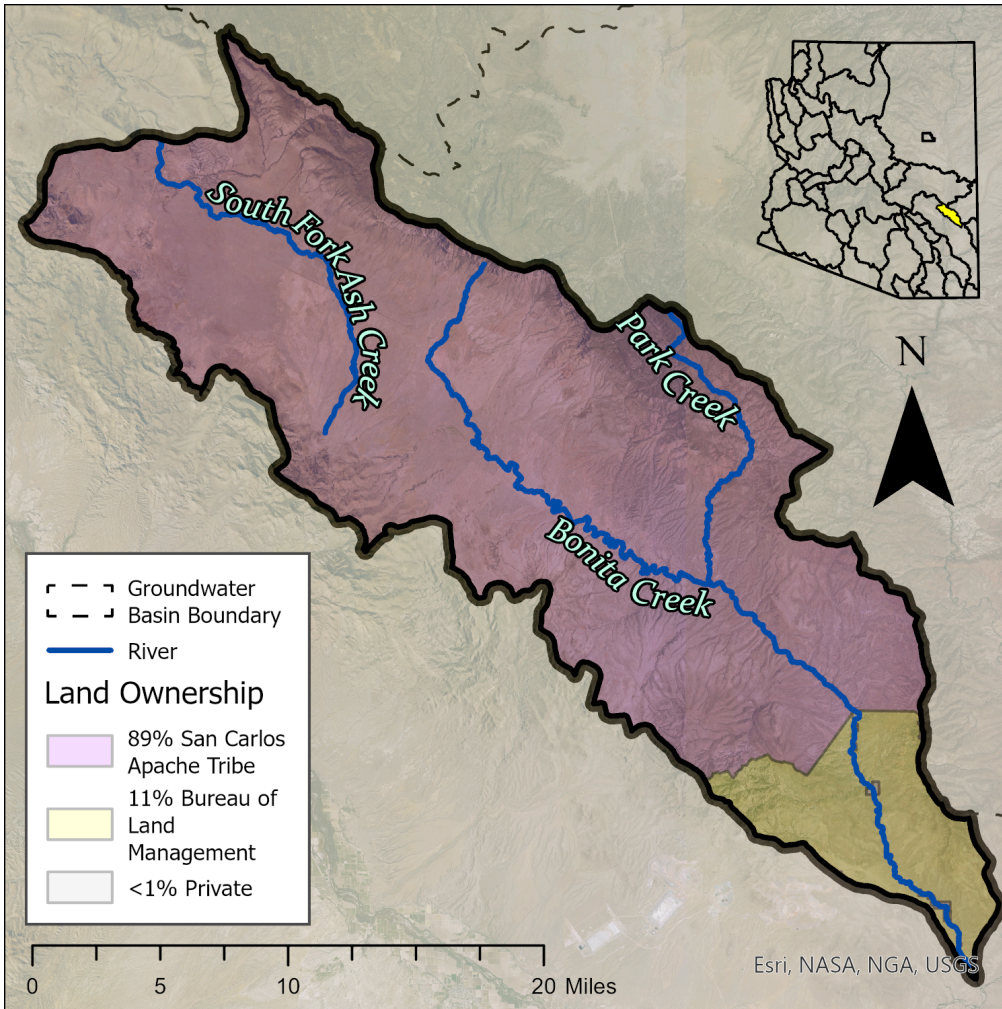
# Bonita Creek Basin (2025)



## Quick Facts

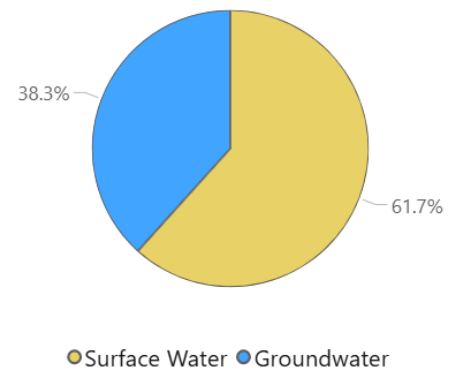
- The Bonita Creek Basin encompasses 457 square miles of Graham County.
- Groundwater typically flows from the northeastern elevated mountain ranges to the southwestern margins of the Gila River.
- Bonita Creek runs from north to south through Bonita Camp, the Gila Mountains, and the Nantac Rim.
- The basin has an estimated population of 41 people, with no major population centers.

**Groundwater Status**  
**Undetermined\***

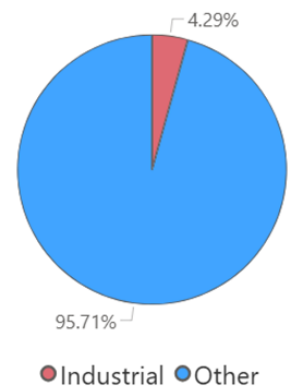


The main source of supply in the basin is surface water. The greatest demand in this basin is from riparian evapotranspiration in the Other category.

## Supply



## Demand



\*ADWR has assessed various water supply components in the Bonita Creek Basin, including streamflow, streamflow infiltration, and groundwater inflow, as well as various demand sectors. However, ADWR has not estimated the amount of groundwater in storage due to a lack of available water level measurements. The lack of groundwater storage data prevents the complete combination of supply and demand results into a comprehensive picture of the basin's overall water budget.