

Bill Williams Basin (2025)



Quick Facts

- The Bill Williams basin encompasses 3,350 square miles within Mohave, La Paz, and Yavapai Counties.
- Groundwater typically flows toward the center of the basin.
- The Bill Williams River flows east to west along the La Paz County/Mohave County boundary.
- The total population of the basin is 4,805. Communities within the basin include Bagdad, Hillside, Kirkland, Kirkland Junction, Peoples Valley, Skull Valley, Wilhoit, and Yarnell.

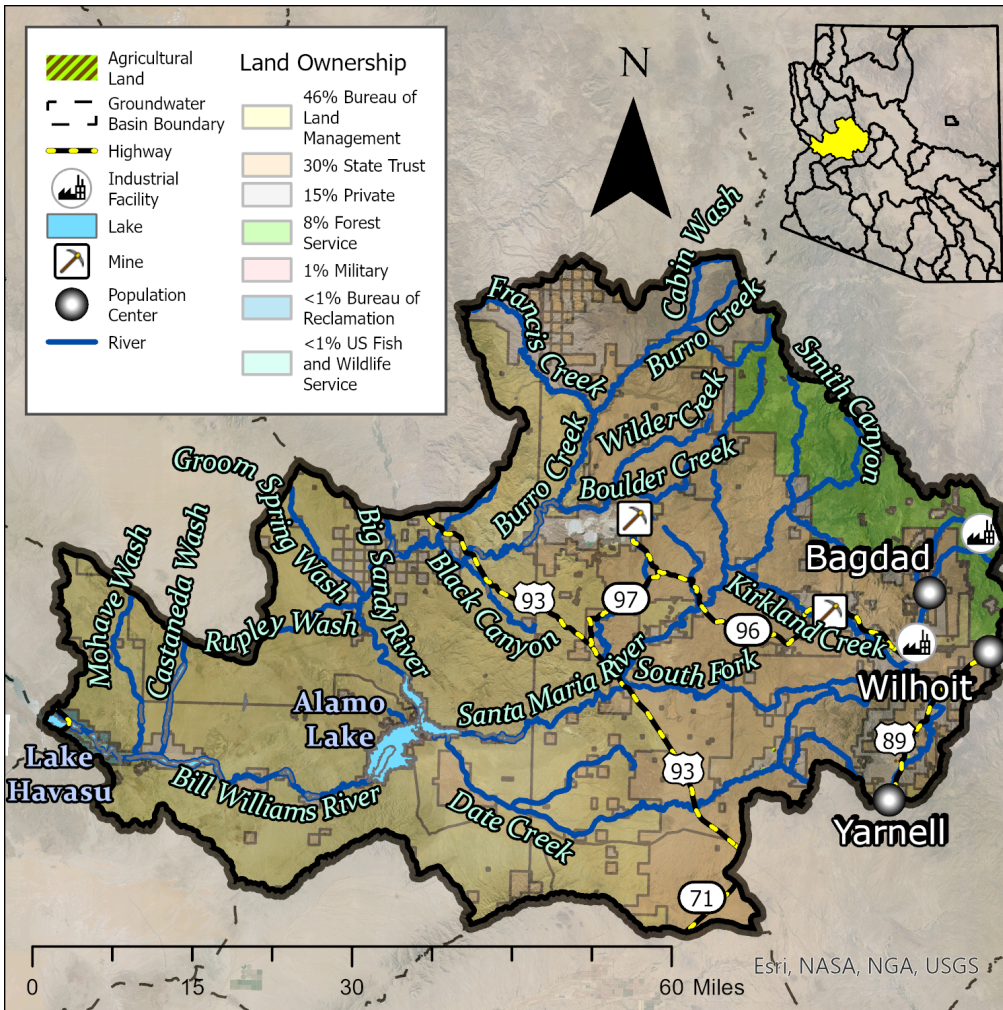
Groundwater Status

Positive Balance

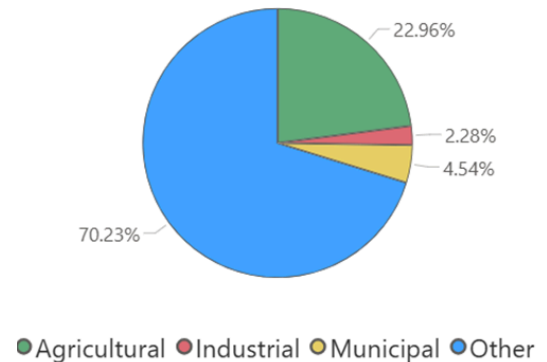
+418 AF / year

Stored: 221,000 AF

The distribution of supply (surface water vs. groundwater and other sources) in the basin is unknown. The greatest demand in this basin is from riparian evapotranspiration in the Other category.



Demand



Projected Groundwater Stored, 2050 - 2075

