

Big Sandy Basin (2024)

Quick Facts

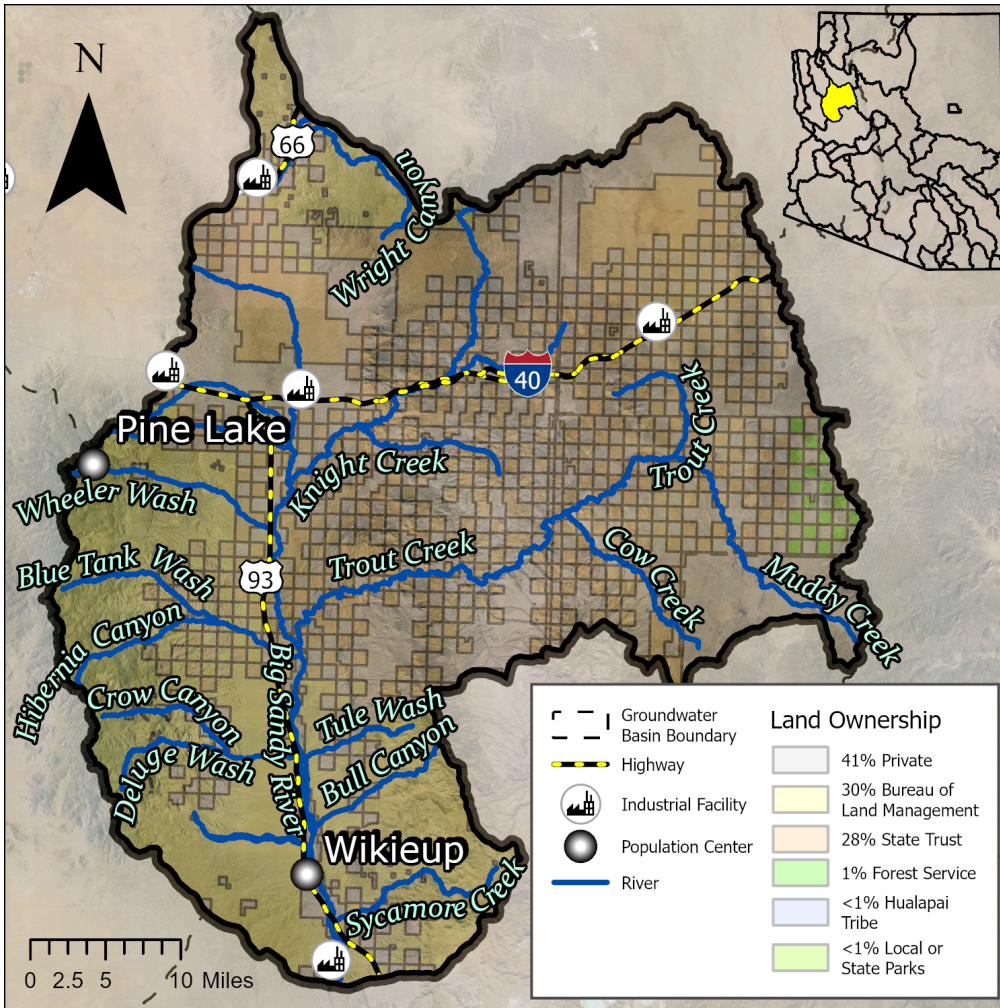
- The Big Sandy Basin covers 1,988 square miles in Mohave and Yavapai Counties.
- The Big Sandy Basin stretches from north of Route 66 to south of the town of Wikieup along U.S. Highway 93.
- Groundwater generally flows from north to south in the basin following the direction of the Big Sandy River.
- The basin has an estimated population of 1,174, with the unincorporated community of Wikieup being the largest population center in the basin.
- Groundwater is pumped from the Big Sandy Basin and transported via pipeline to the Bill Williams Basin for the Phelps Dodge Bagdad Mine.

Groundwater Status

Negative Balance

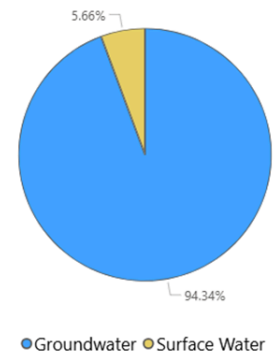
-18,075 AF / year

Stored: Undetermined*

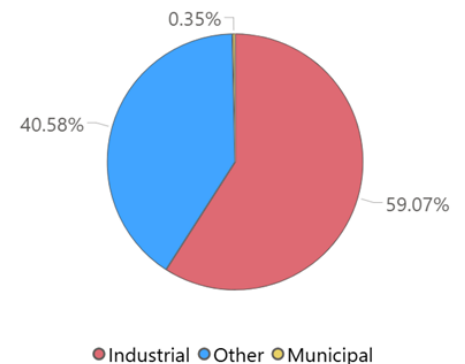


The main source of supply in the basin is groundwater. The greatest demand in this basin is industrial.

Supply



Demand



*The Big Sandy Basin comprises the Wikieup subbasin and the Fort Rock subbasin. ADWR has not estimated the amount of groundwater in storage in the Fort Rock subbasin due to its complex geology. Groundwater storage has been assessed for the Wikieup subbasin, where the total storage has decreased from 3.3 million AF in 1990 to 2.7 million AF in 2023.