

# Aravaipa Canyon Basin (2025)

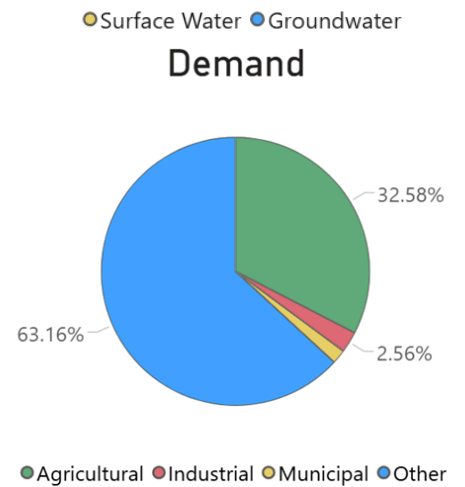
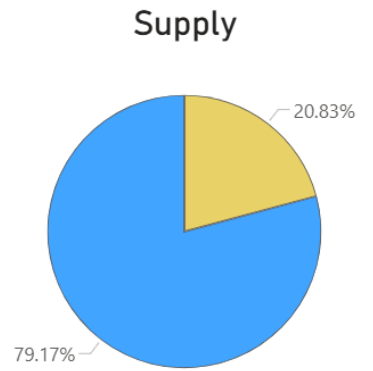
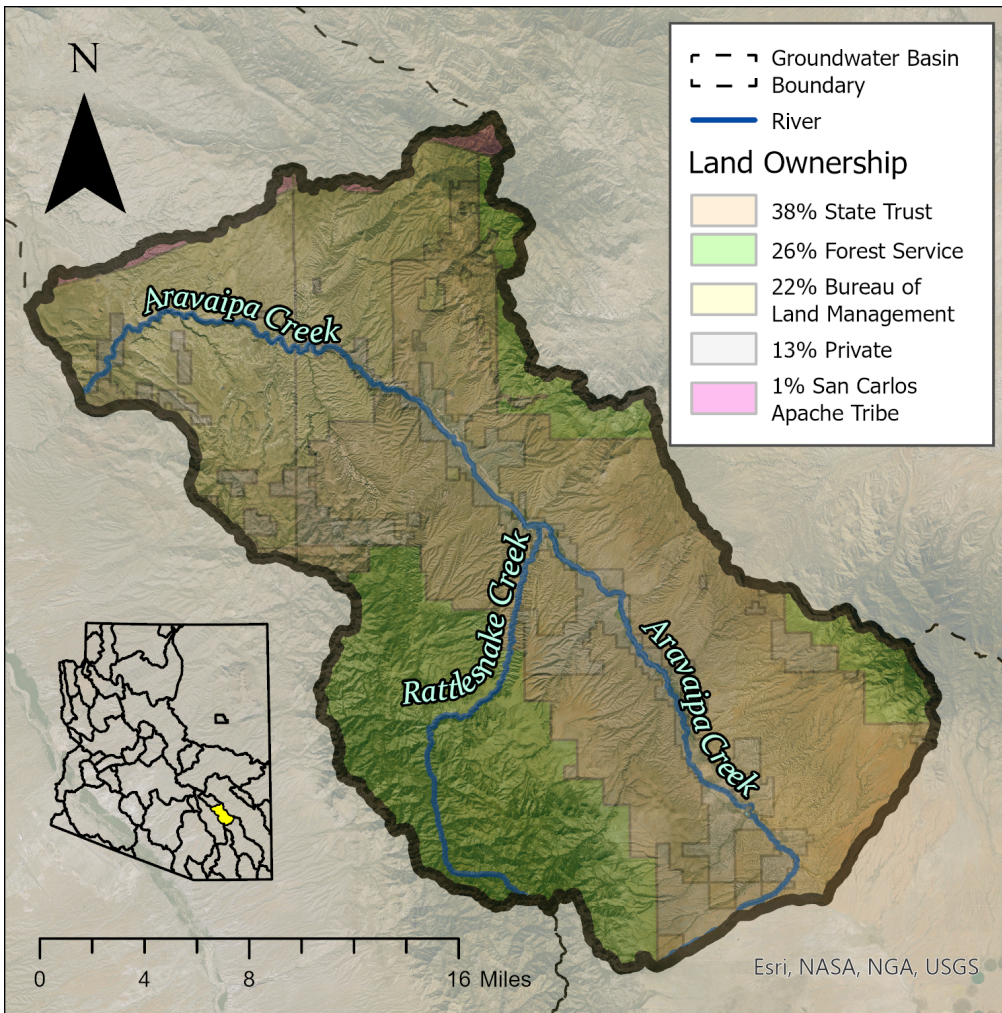


## Quick Facts

- The Aravaipa Canyon basin comprises 517 square miles within Graham and Pinal Counties.
- Groundwater tends to flow North-South through the basin, following the Aravaipa Canyon.
- The basin's major stream reach, Aravaipa Creek, runs north-south through and curves west into Aravaipa Canyon. Perennial reaches are located along Aravaipa Creek, Parsons Creek, Turkey Creek, and Virgus Canyon.
- The basin has a small population of 764 people. The only population center in the basin is the historic community of Klondyke.

**Groundwater Status**  
**Negative Balance**  
 -1,915 AF / year  
 Stored: 543,000 AF

The main source of supply in the basin is groundwater. The greatest demand in this basin is from riparian evapotranspiration in the Other category.



## Projected Groundwater Stored, 2050 - 2075

