

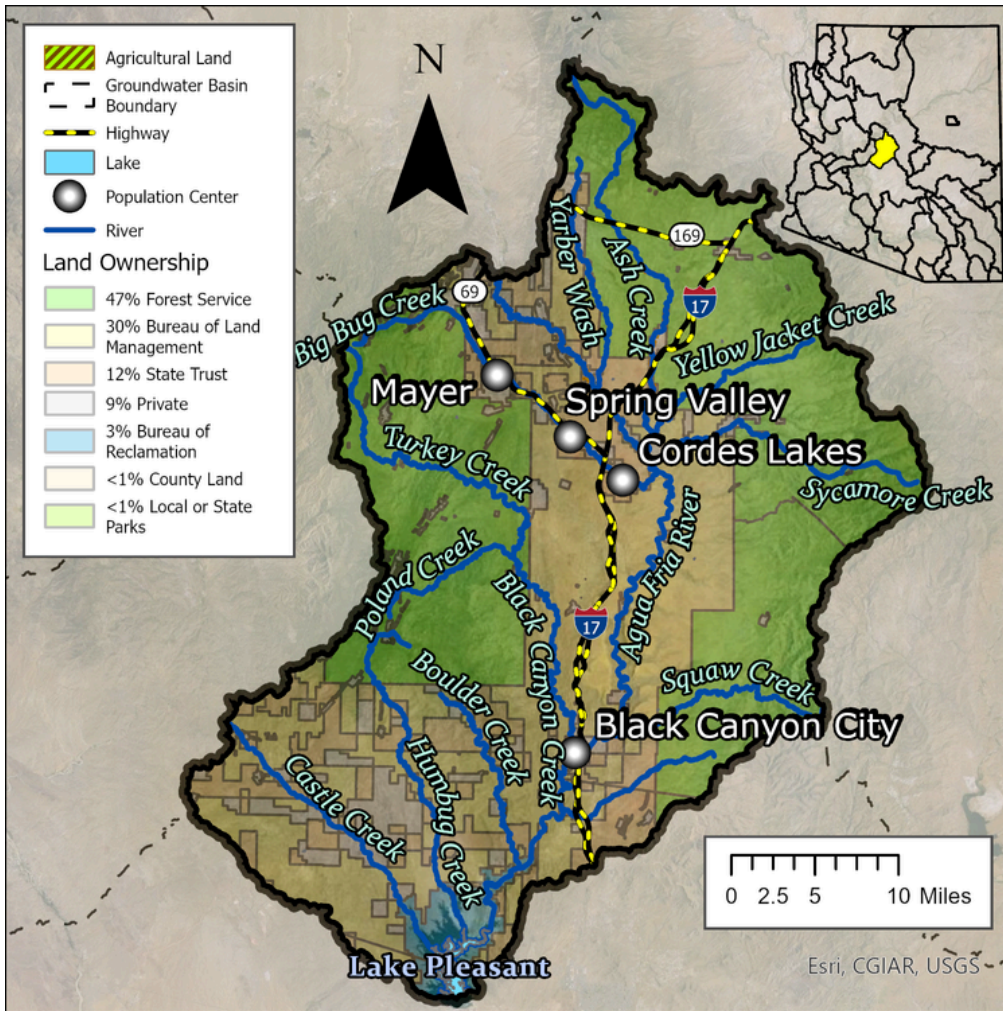
Agua Fria Basin (2024)



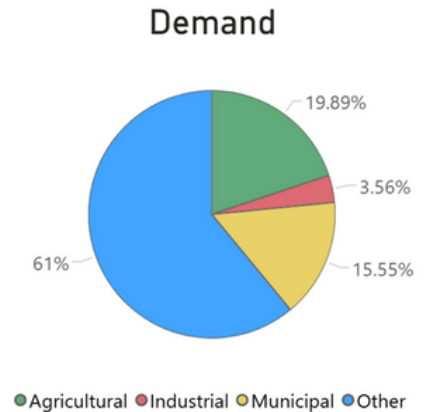
Quick Facts

- The Agua Fria Basin covers 1,263 square miles within Maricopa County and Yavapai County.
- The Agua Fria River runs north to south through the basin's center, eventually flowing into Lake Pleasant.
- The basin is located between the metropolitan areas of Phoenix and Prescott in central Arizona and encompasses the drainage of the Agua Fria River from below the Prescott Active Management Area to Lake Pleasant.
- The basin had a population of 8,210 in 2000.

Groundwater Status Undetermined*



The main source of supply in the basin is groundwater. The greatest demand in this basin is evapotranspiration in the Other category.



*ADWR has assessed various water supply components in the Agua Fria Basin, including surface water, streamflow infiltration, groundwater inflow and outflow, and mountain front recharge. However, the basin's complex geology has prevented the estimation of groundwater storage, which limits the ability to thoroughly combine supply and demand results into a comprehensive water budget. Further geological analysis and groundwater storage estimation is needed.