

North American Datum 1983

For data go to: <https://app.azwater.gov/gwsi/SearchGWSL.aspx>

CHANGE IN WATER LEVEL 1993 to 2022

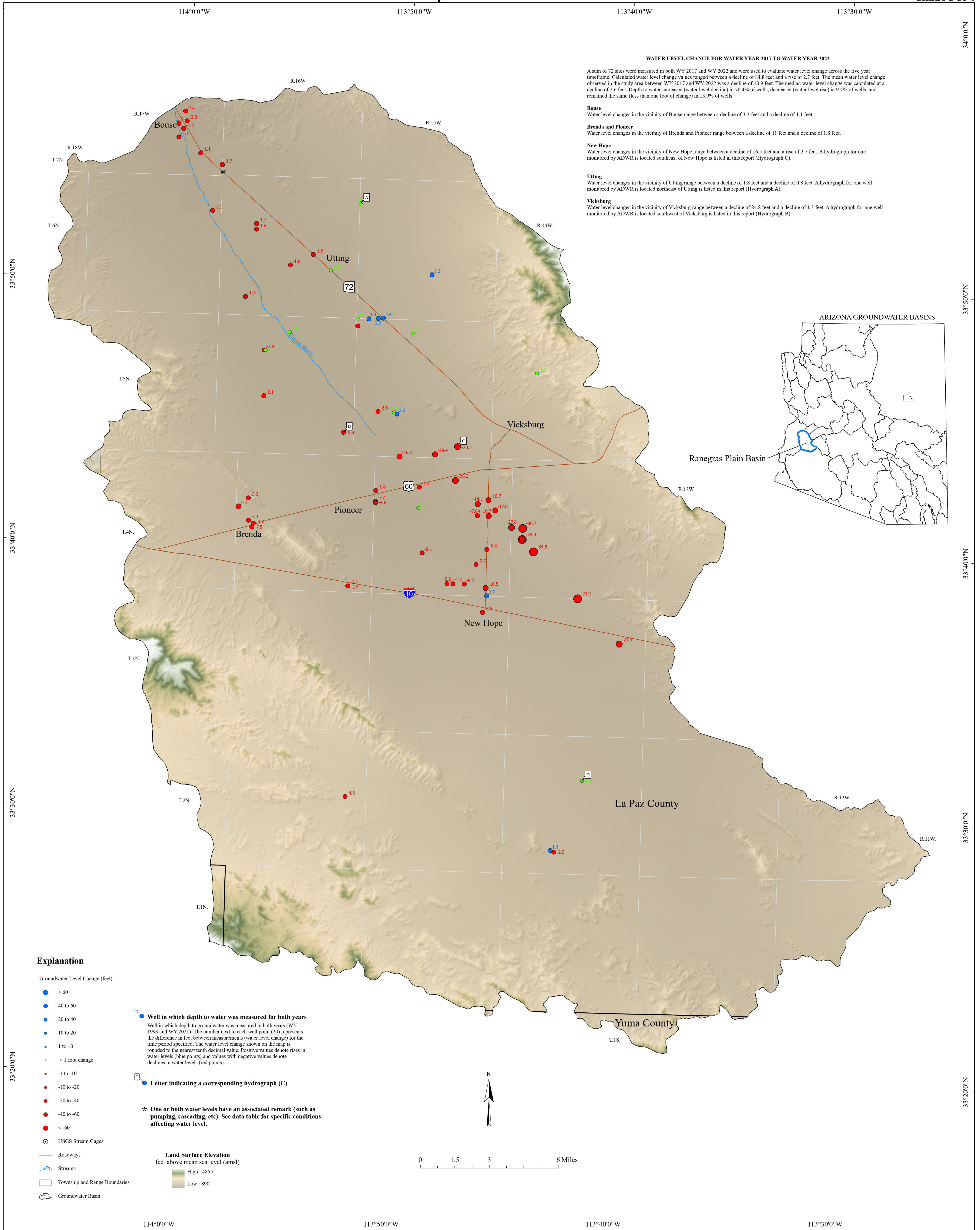
WATER LEVEL CONDITIONS IN RANEGRAS PLAIN GROUNDWATER BASIN, ARIZONA, 1993-2022, 2017-2022

August 2025



HYDROLOGY DIVISION

For more information or copies contact: ADWR Information Services 1110 W Washington St Phoenix, AZ 85007 (602) 771-8500 www.azwater.gov



WATER LEVEL CHANGE FOR WATER YEAR 2017 TO WATER YEAR 2022

A sum of 72 sites were measured in both WY 2017 and WY 2022 and were used to evaluate water level change across the five year timeframe. Calculated water level change values ranged between a decline of 84.8 feet and a rise of 2.7 feet. The mean water level change observed in the study area between WY 2017 and WY 2022 was a decline of 10.9 feet. The median water level change was calculated at a decline of 2.6 feet. Depth to water increased (water level decline) in 76.4% of wells, decreased (water level rise) in 9.7% of wells, and remained the same (less than one foot of change) in 13.9% of wells.

Bouse
Water level changes in the vicinity of Bouse range between a decline of 3.3 feet and a decline of 1.1 feet.

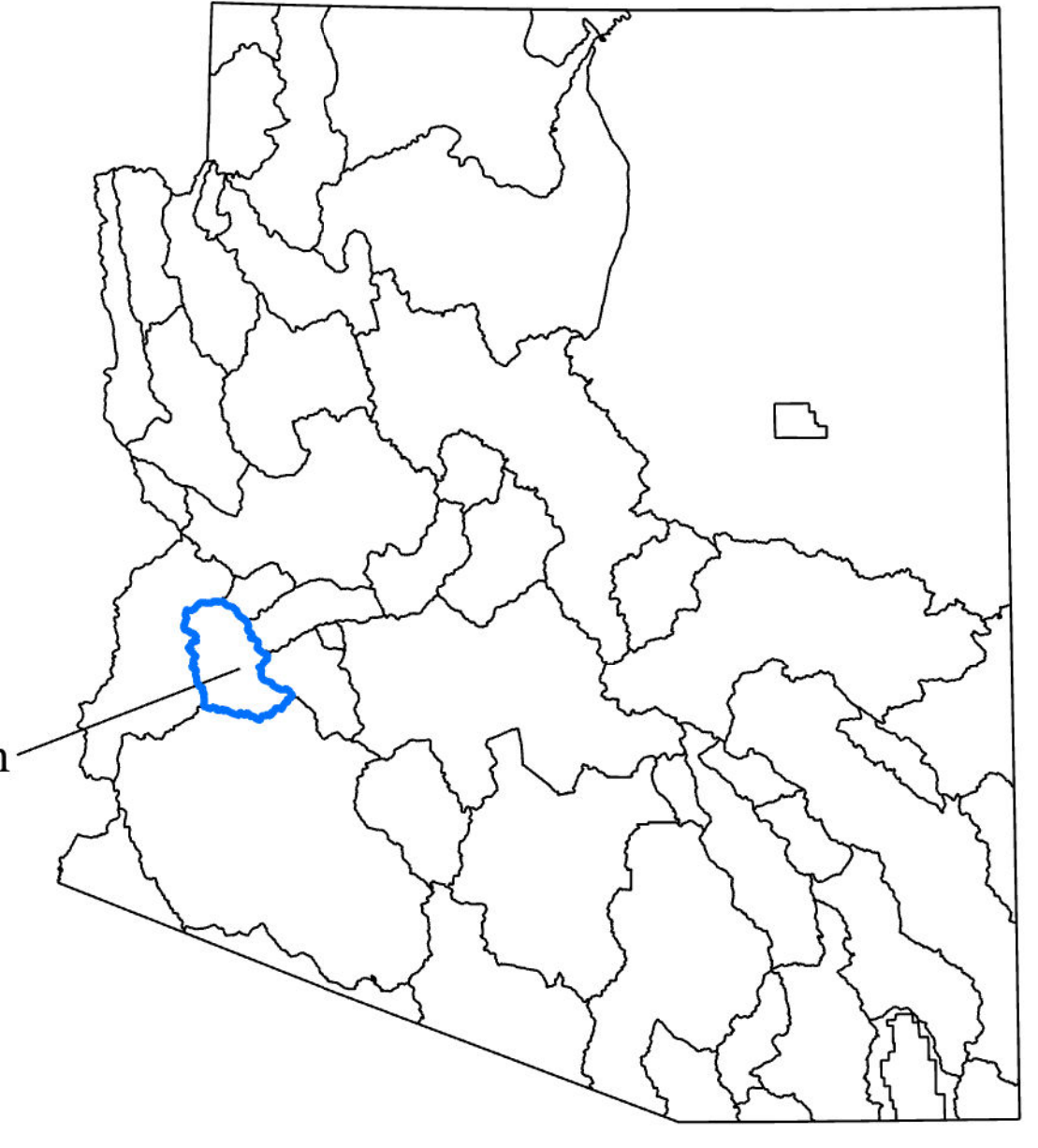
Brenda and Pioneer
Water level changes in the vicinity of Brenda and Pioneer range between a decline of 11 feet and a decline of 1.8 feet.

New Hope
Water level changes in the vicinity of New Hope range between a decline of 16.5 feet and a rise of 2.7 feet. A hydrograph for one monitored by ADWR is located southeast of New Hope is listed in this report (Hydrograph C).

Utting
Water level changes in the vicinity of Utting range between a decline of 1.8 feet and a decline of 0.8 feet. A hydrograph for one well monitored by ADWR is located northeast of Utting is listed in this report (Hydrograph A).

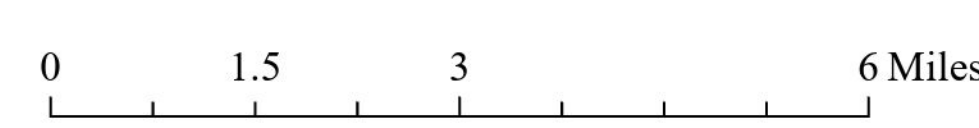
Vicksburg
Water level changes in the vicinity of Vicksburg range between a decline of 84.8 feet and a decline of 1.3 feet. A hydrograph for one well monitored by ADWR is located southwest of Vicksburg is listed in this report (Hydrograph B).

ARIZONA GROUNDWATER BASINS



Explanation

- Groundwater Level Change (feet)
 - > 60
 - 40 to 60
 - 20 to 40
 - 10 to 20
 - 1 to 10
 - < 1 foot change
 - 1 to -10
 - 10 to -20
 - 20 to -40
 - 40 to -60
 - < -60
- 20 Well in which depth to water was measured for both years
Well in which depth to groundwater was measured in both years (WY 1993 and WY 2021). The number next to each well point (20) represents the difference in feet between measurements (water level change) for the time period specified. The water level change shown on the map is rounded to the nearest tenth decimal value. Positive values denote rises in water levels (blue points) and values with negative values denote declines in water levels (red points).
- C Letter indicating a corresponding hydrograph (C)
- * One or both water levels have an associated remark (such as pumping, cascading, etc). See data table for specific conditions affecting water level.
- Land Surface Elevation
feet above mean sea level (amsl)
High : 4855
Low : 890
- USGS Stream Gages
- Roadways
- Streams
- Township and Range Boundaries
- Groundwater Basin



North American Datum 1983

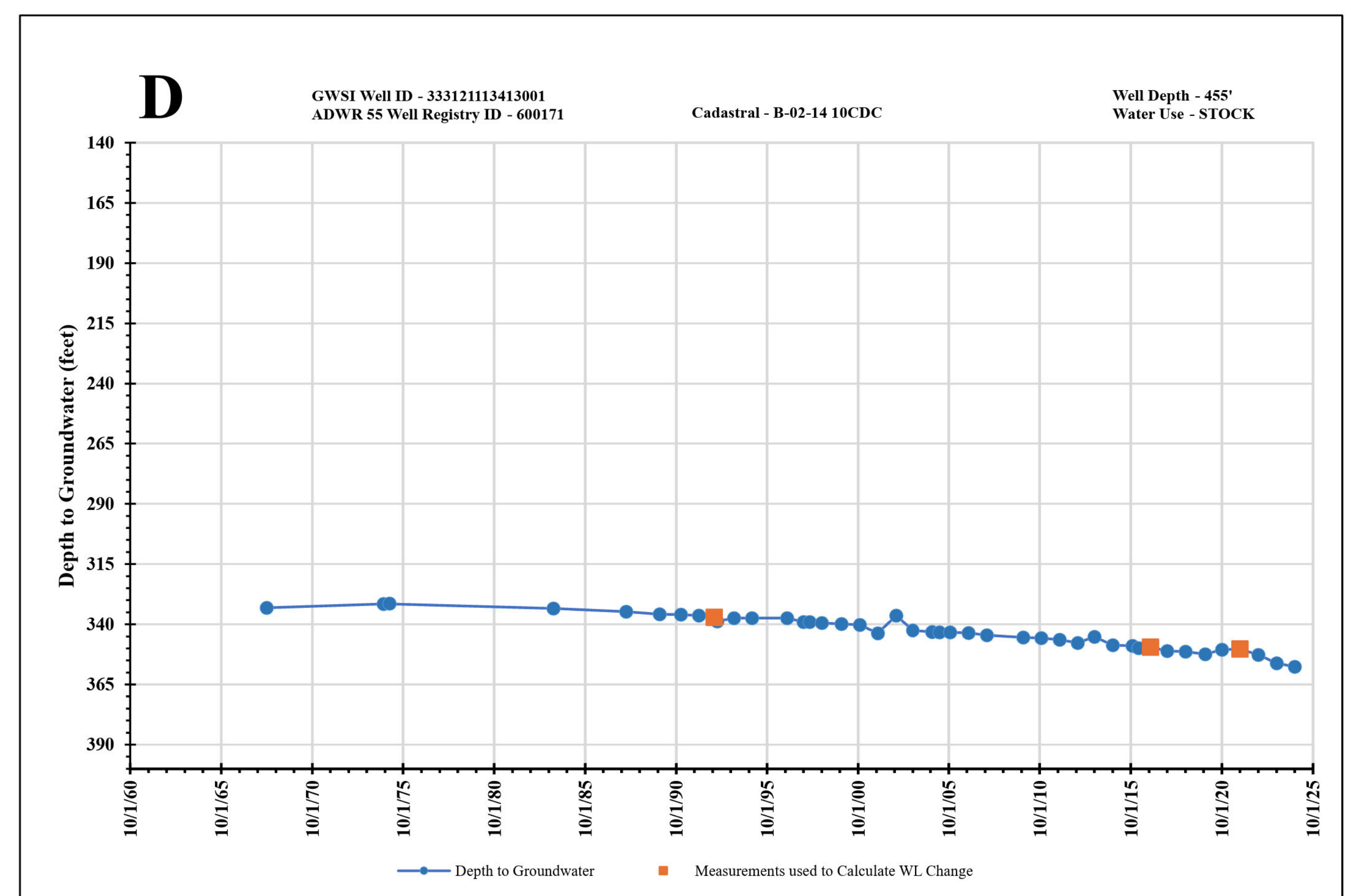
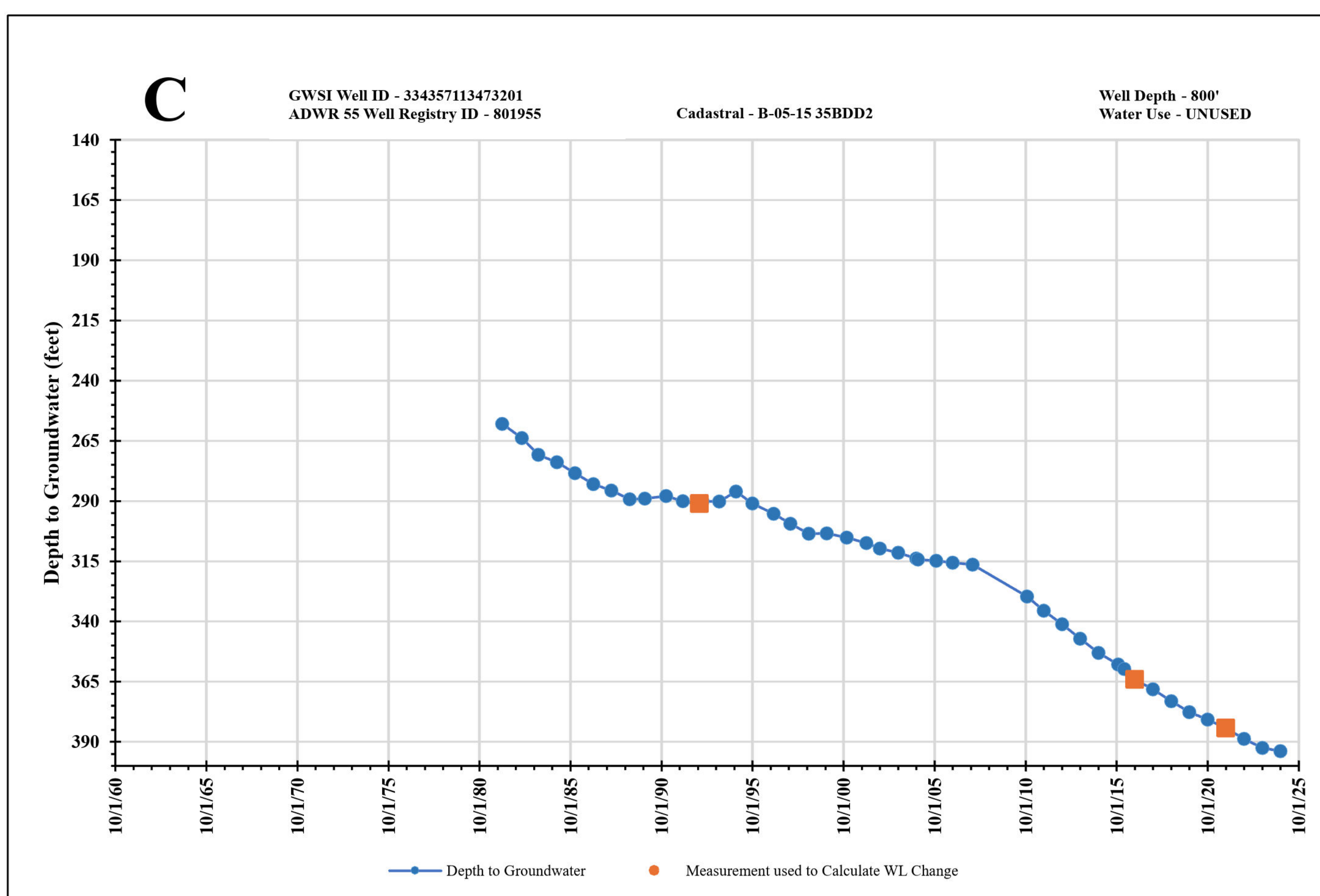
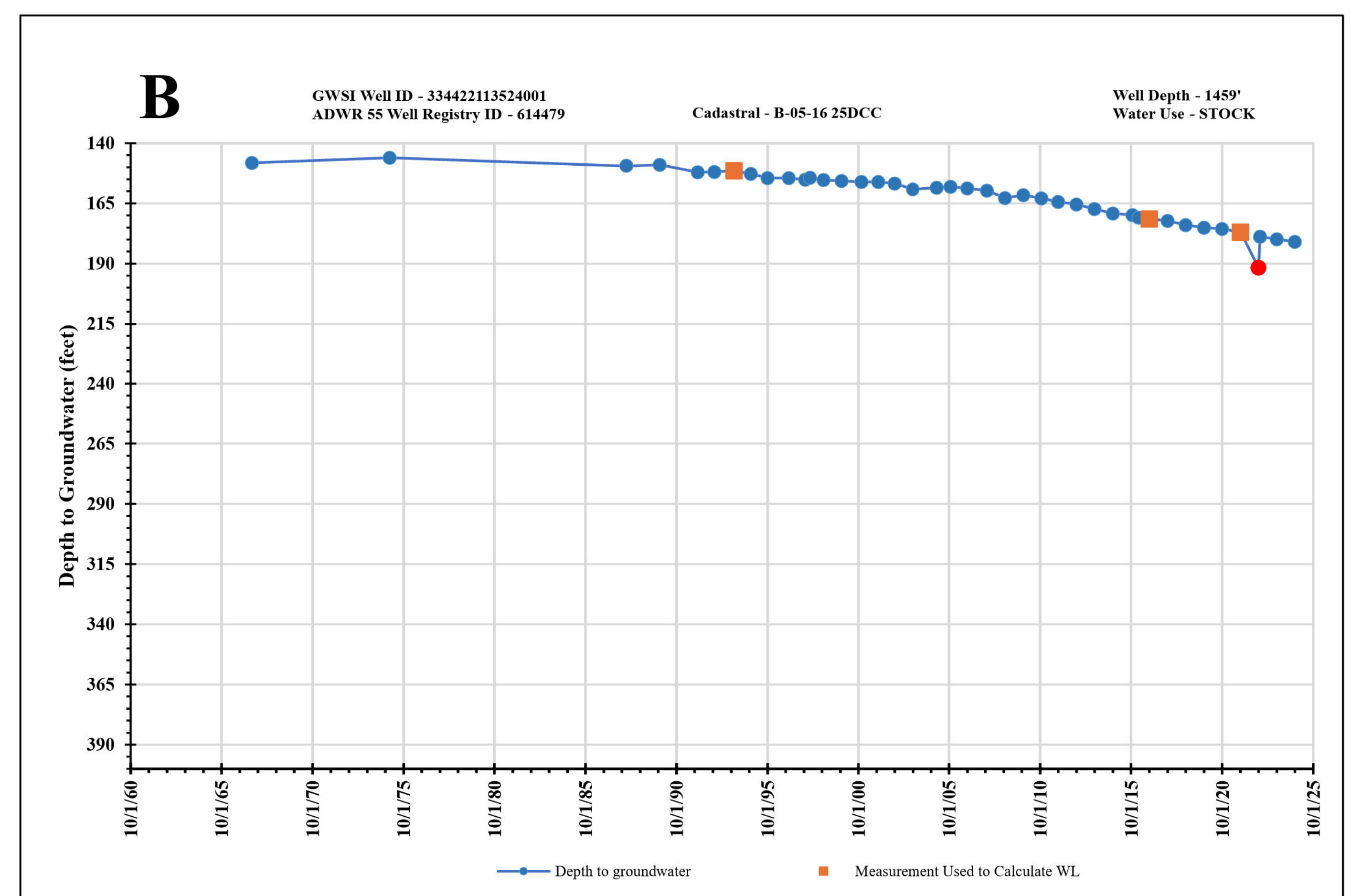
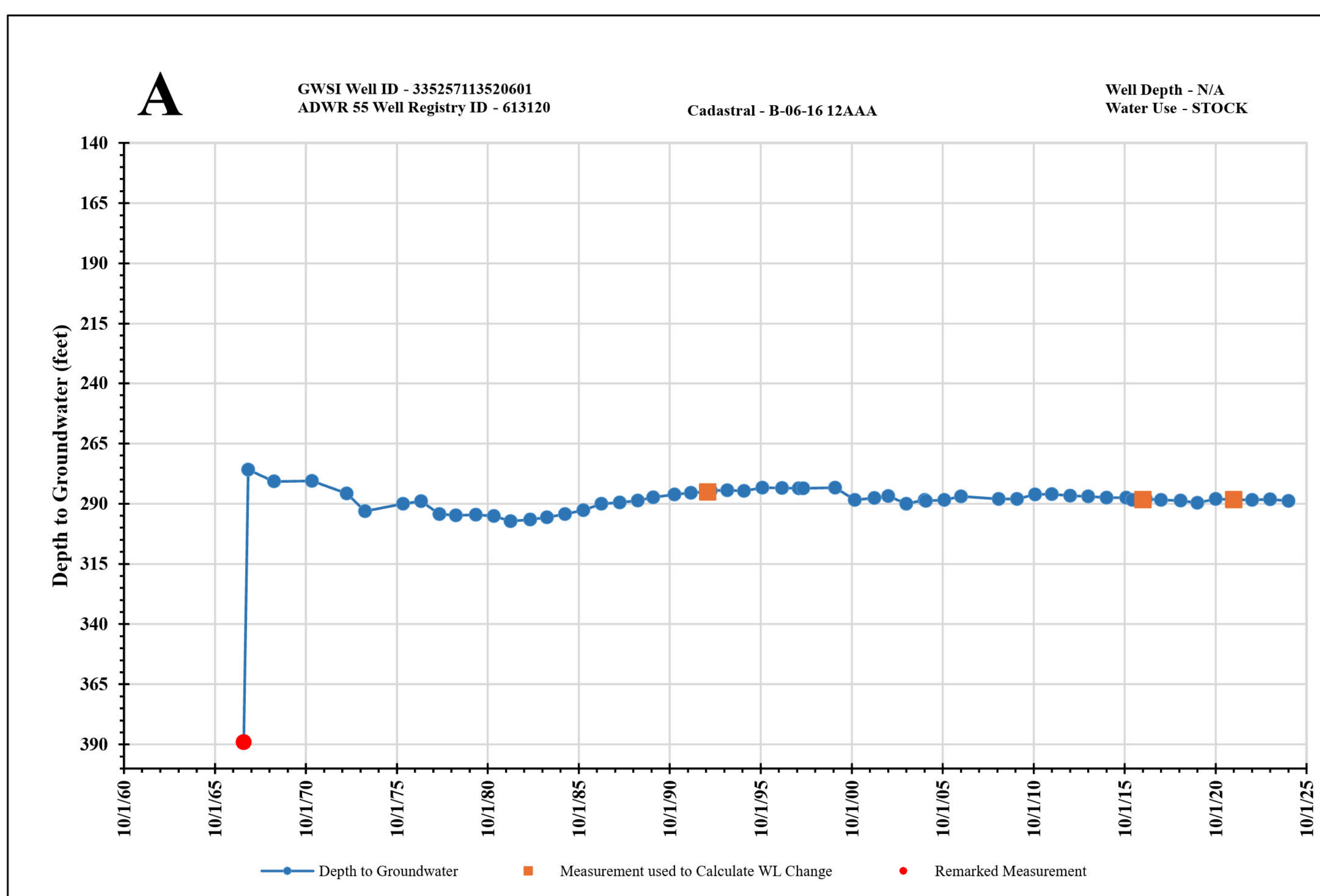
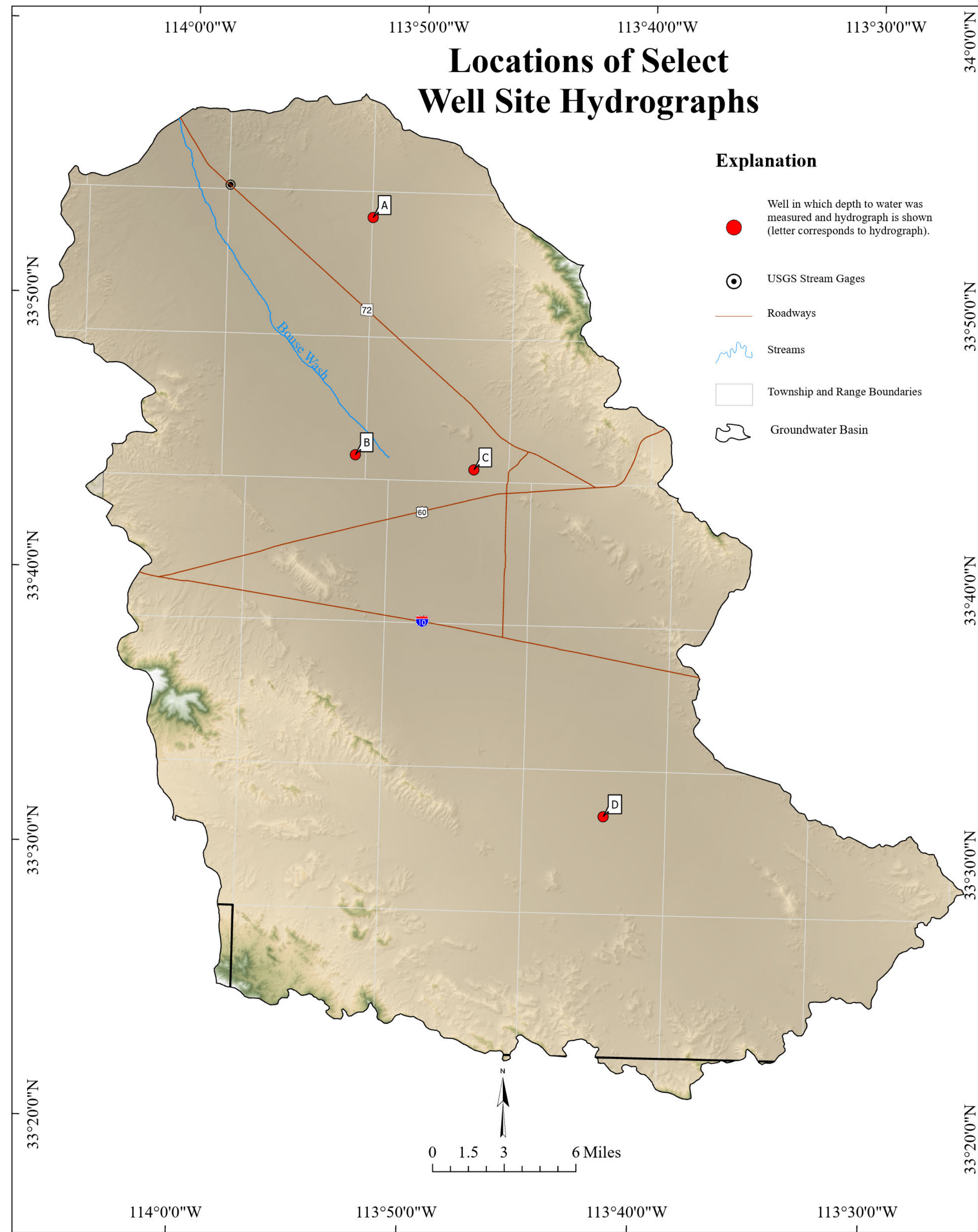
For data go to:
<https://app.azwater.gov/gwsi/SearchGWSL.aspx>



CHANGE IN WATER LEVEL 2017 to 2022
WATER LEVEL CONDITIONS IN THE RANEGRAS PLAIN GROUNDWATER BASIN, ARIZONA, 1993-2022, 2017-2022

For more information or copies contact:
ADWR Information Services
1110 W Washington St
Phoenix, AZ 85007
(602) 771-8500
www.azwater.gov

August 2025



North American Datum 1983

For data go to:
<https://app.azwater.gov/gwsi/Hydrograph.aspx?SiteID=335257113520601&ObjectID=1596114>

HYDROGRAPHS OF SELECTED WELLS & DATA FOR WATER LEVEL CHANGE CONDITIONS IN THE RANEGRAS PLAIN GROUNDWATER BASIN, ARIZONA

WATER LEVEL CONDITIONS IN THE RANEGRAS PLAIN GROUNDWATER BASIN, ARIZONA, 1993-2022, 2017-2022

August 2025

For more information or copies contact:
ADWR Information Services
1110 W Washington St
Phoenix, AZ 85007
(602) 771-8500
www.azwater.gov



HYDROLOGY DIVISION

Table 1 - Depth to Water (DTW), Water Level Elevation (WLE), and Water Level Change (in feet) for wells located in the Ranegras Plain Groundwater Basin measured in 1993, 2017 and 2022. Data obtained from ADWR GWSI database (<https://app.azwater.gov/gwsi/SearchGWSI.aspx>)

All Data for Water Level Change Maps

Cadastral	Site ID	Hydrograph	WY 1993			WY 2017			WY 2022			Water Level Change (feet)	
			Date	DTW (feet bls)	WLE (feet amsl)	Date	DTW (feet bls)	WLE (feet amsl)	Date	DTW (feet bls)	WLE (feet amsl)	WY 1993-WY 2022	WY 2017-WY 2022
B-02-14 10CDC	333121113413001	D	11/18/1992	337.1	1350	11/1/2016	349.5	1350	10/25/2021	350.3	1350	-13.2	-0.8
B-02-14 28CCC	332848113425101					12/12/2016	226.1	1438	1/20/2022	224.7	1438		1.4
B-02-14 28CCC	332848113425101		1/4/1993	233.1	1438							8.4	
B-02-14 28CCD	332847113423701					12/12/2016	309.8	1430	1/20/2022	312.3	1430		-2.5
B-02-16 13CCC	333035113521001		1/4/1993	49.8	1738	12/16/2016	49.7	1738	1/20/2022	54.3	1738	-4.5	-4.6
B-03-14 11DDC	333637113394001		1/4/1993	264.3	1255	12/12/2016	295.9	1255	1/13/2022	317.8	1255	-53.5	-21.9
B-03-15 02DAC	333737113460801		11/18/1992	201.8	1205	11/1/2016	220.2	1205	10/25/2021	228.7	1205	-26.9	-8.5
B-04-14 19BAA	334054113442901		1/5/1993	272.8	1225	12/14/2016	360.3	1225	1/18/2022	441	1225	-168.2	-80.7
B-04-14 19BDD1	334029113443301		1/5/1993	266.3	1221	12/14/2016	358.6	1221	1/18/2022	437.5	1221	-171.2	-78.9
B-04-14 19BDD2	334030113442901					12/14/2016	358.3	1221	1/18/2022	373.9	1221		-15.6
B-04-14 19DAA	334026113435901		1/5/1993	291.6	1247							-175.1	
B-04-14 29CAA	333936113432701		1/5/1993	294.6	1251							-188.3	
B-04-14 30AAA	334000113440001		1/5/1993	282	1239	12/14/2016	377.1	1239	1/18/2022	461.9	1239	-179.9	-84.8
B-04-14 33DDD	333818113415301					12/14/2016	373.9	1265	1/18/2022	445	1265		-71.1
B-04-15 02DDD3	334242113460101		1/5/1993	331	1241							-175.5	
B-04-15 07CBB	334216113510601					12/15/2016	132	1130	2/7/2022	133.8	1130		-1.8
B-04-15 08ADA4	334221113491101					12/15/2016	156.1	1130	1/19/2022	157.4	1130		-1.3
B-04-15 09BAD	334228113483801		1/4/1993	198.3	1140							10.7	
B-04-15 10AAA	334239113470301		1/4/1993	283.3	1197							-139.7	
B-04-15 10BAA	334237113473601		1/4/1993	216.4	1175	12/13/2016	371.8	1175	1/13/2022	398.1	1175	-181.7	-26.3
B-04-15 11BAA	334239113463401		1/4/1993	305.9	1218							-167	
B-04-15 11CAA	334214113463601		1/4/1993	294.1	1201							-151.9	
B-04-15 11DDA	334156113460201					12/13/2016	455.7	1215	1/13/2022	472.4	1215		-16.7
B-04-15 13BDA	334122113453802		1/4/1993	312.1	1220							-174.8	
B-04-15 13BDB	334120113453101		1/4/1993	303.5	1205	12/16/2016	454	1205	1/18/2022	471.8	1205	-168.3	-17.8
B-04-15 13DDD	334056113445701					12/14/2016	283.6	1213	1/18/2022	311.4	1213		-27.8
B-04-15 14BAA	334148113463601		1/4/1993	277.2	1190	12/13/2016	424.7	1190	1/19/2022	438.8	1190	-161.6	-14.1
B-04-15 14CAA	334118113463501					2/2/2017	315.61	1181.1	2/16/2022	322.65	1181.1		-7.04
B-04-15 14DAA	334121113460001					12/13/2016	446.7	1195	1/19/2022	457.4	1195		-10.7
B-04-15 17ADA	334137113491101					12/13/2016	131.8	1130	1/19/2022	131.7	1130		0.1
B-04-15 18BBB1	334144113510601		1/5/1993	132.1	1129	12/15/2016	139.5	1129	2/7/2022	144.3	1129	-12.2	-4.8
B-04-15 18BBB2	334138113510601		1/5/1993	132	1129	12/15/2016	142.8	1129	2/7/2022	150.5	1129	-18.5	-7.7
B-04-15 18BCC	334122113510901		11/17/1992	136.4	1133							-22.6	
B-04-15 23DDD2	334005113460401		1/5/1993	112	1169	12/13/2016	28.3	1169	1/12/2022	34.6	1169	77.4	-6.3
B-04-15 26CAD	333930113463101					12/12/2016	48.4	1168	1/12/2022	58.1	1168		-9.7
B-04-15 28BBD	333952113490101					12/13/2016	159.6	1158	1/19/2022	167.7	1158		-8.1
B-04-15 34ACC	333846113473001		1/5/1993	178.5	1175	12/12/2016	187	1175	1/19/2022	188.7	1175	-10.2	-1.7
B-04-15 34ADD	333846113470601					12/12/2016	182.3	1175	1/19/2022	190.5	1175		-8.2
B-04-15 34BCD	333845113474901		1/5/1993	176.5	1175	12/12/2016	182	1175	1/19/2022	187.2	1175	-10.7	-5.2
B-04-15 35DAD	333837113460301					12/12/2016	212	1180	1/12/2022	228.5	1180		-16.5
B-04-15 35DDD	333820113460001					12/12/2016	219.9	1181	1/12/2022	217.2	1181		2.7
B-04-16 09BDA	334219113545001		1/5/1993	239.8	1235							-6.2	
B-04-16 15ACB	334138113534201		1/5/1993	216.7	1216							-20.2	
B-04-16 18BAA	334147113565401					12/28/2016	348.3	1325	2/1/2022	351.6	1325		-3.3
B-04-16 18BCC1	334127113572001					12/28/2016	347.8	1340	2/1/2022	358.8	1340		-11
B-04-16 18DCC	334106113564601					12/29/2016	359.3	1345	2/2/2022	364.4	1345		-5.1
B-04-16 19ABA	334053113564001					12/29/2016	365.3	1353	2/2/2022	370	1353		-4.7
B-04-16 19ACB3	334041113564501					12/29/2016	372.8	1355	2/2/2022	380.6	1355		-7.8
B-04-16 35DAD1	333835113521801		1/5/1993	256.3	1260	12/16/2016	267.1	1260	2/7/2022	269.6	1260	-13.3	-2.5
B-04-16 35DAD2	333834113521801					12/16/2016	267.1	1260	2/7/2022	272.4	1260		-5.3
B-04-16 35DAD2	333834113521801		1/5/1993	255.9	1260							-16.5	
B-05-14 17AAC	334648113440001					12/15/2016	38.5	1690	1/19/2022	39	1690		-0.5
B-05-15 04CAA	334811113493801					12/12/2016	327.3	1238	1/11/2022	327.1	1238		0.2
B-05-15 06BAA1	334840113514101		1/5/1993	229.5	1156	10/25/2016	245.1	1156	10/25/2021	243.7	1156	-14.2	1.4
B-05-15 06BCB	334824113520901					12/13/2016	213.2	1131	1/10/2022	214.2	1131		-1
B-05-15 06BCB	334824113520901		1/5/1993	195.6	1131							-18.6	
B-05-15 29AAC	334507113501501					12/12/2016	225.2	1130	1/10/2022	223	1130		2.2
B-05-15 29AAC	334507113501501		1/5/1993	190.2	1130							-32.8	
B-05-15 29ABA	334510113502701					12/12/2016	221.3	1126	1/10/2022	221	1126		0.3
B-05-15 29ABA	334510113502701		1/5/1993	177.7	1126							-43.3	
B-05-15 29DAA	334446113500601		1/14/1993	184.6	1121							-50.6	
B-05-15 30AAA	334512113451101					12/12/2016	121.8	1105	1/10/2022	124.4	1105		-2.6
B-05-15 32DDD	334330113500601					12/15/2016	218.8	1115	2/7/2022	235.5	1115		-16.7
B-05-15 32DDD	334330113500601		1/5/1993	173	1115							-62.5	
B-05-15 34DCB	334340113482701					12/15/2016	309.3	1162	1/19/2022	328.7	1162		-19.4
B-05-15 35BDD2	334357113473201	C	11/17/1992	291.1	1208	10/24/2016	364.1	1208	10/25/2021	384.3	1208	-93.2	-20.2
B-05-16 01AAA	334839113521301					12/13/2016	210.4	1136	1/10/2022	211.1	1136		-0.7
B-05-16 01AAA	334839113521301		1/5/1993	198.9	1136							-12.2	
B-05-16 03CBC	334806113551401					12/21/2016	127	1059	1/7/2022	126.9	1059		0.1
B-05-16 08DAA	334723113562601					12/14/2016	145.5	1085	1/7/2022	147.4	1085		-1.9
B-05-16 08DAA	334723113562601		1/5/1993	139.8	1085							-7.6	
B-05-16 09BCC	334722113562001					10/24/2016	145.9	1083	10/25/2021	146.6	1083		-0.7
B-05-16 09BCC	334722113562001		11/17/1992	140.7	1083							-5.9	
B-05-16 21BCC3	334538113561901		1/5/1993	188.9	1135	12/21/2016	192.7	1135	1/6/2022	194.8	1135		-2.1
B-05-16 25DCC	334422113524001	B	11/17/1992	151.9	1123	10/24/2016	171.5	1123	10/25/2021	176.9	1123	-25	-5.4
B-06-15 27BBA	335024113485701		11/17/1992	430.4	1352	10/25/2016	439.8	1352	10/25/2021	438.5	1352	-8.1	1.3
B-06-15 30AAA	335025113510701		1/4/1993	294.2	1217							-4.5	
B-06-15 31DDD	334842113511401		1/5/1993	246.8	1175	12/12/2016							