

For data go to:  
<https://app.azwater.gov/gwsi/SearchGWSI.aspx>

For more information or copies contact:  
ADWR Information Services  
1110 W Washington Street, Suite 310  
Phoenix, AZ 85007  
(602) 771-8500  
www.azwater.gov

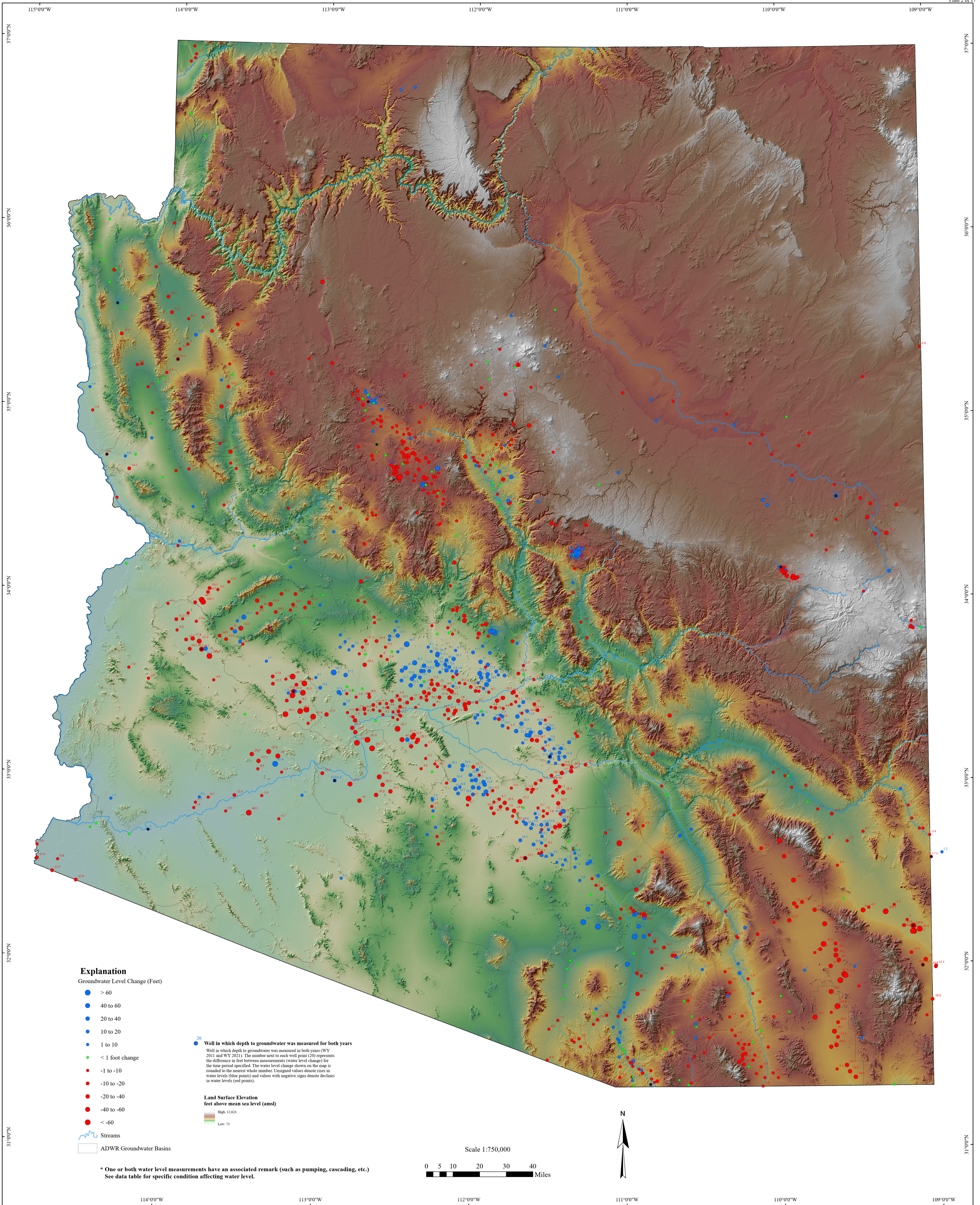
## GROUNDWATER LEVEL CHANGES IN ARIZONA WATER YEARS 2001 - 2021 (PLATE 1)

September 2025

North American Datum 1983  
N:\Basic Data Reports\  
Water Level Change Reports\  
Water Level Change Report 2021 Maps



Hydrology Division



For data go to:  
<https://app.azwater.gov/gwsi/SearchGWSL.aspx>

For more information or copies contact:  
ADWR Information Services  
1110 W Washington Street, Suite 310  
Phoenix, AZ 85007  
(602) 771-8500  
www.azwater.gov

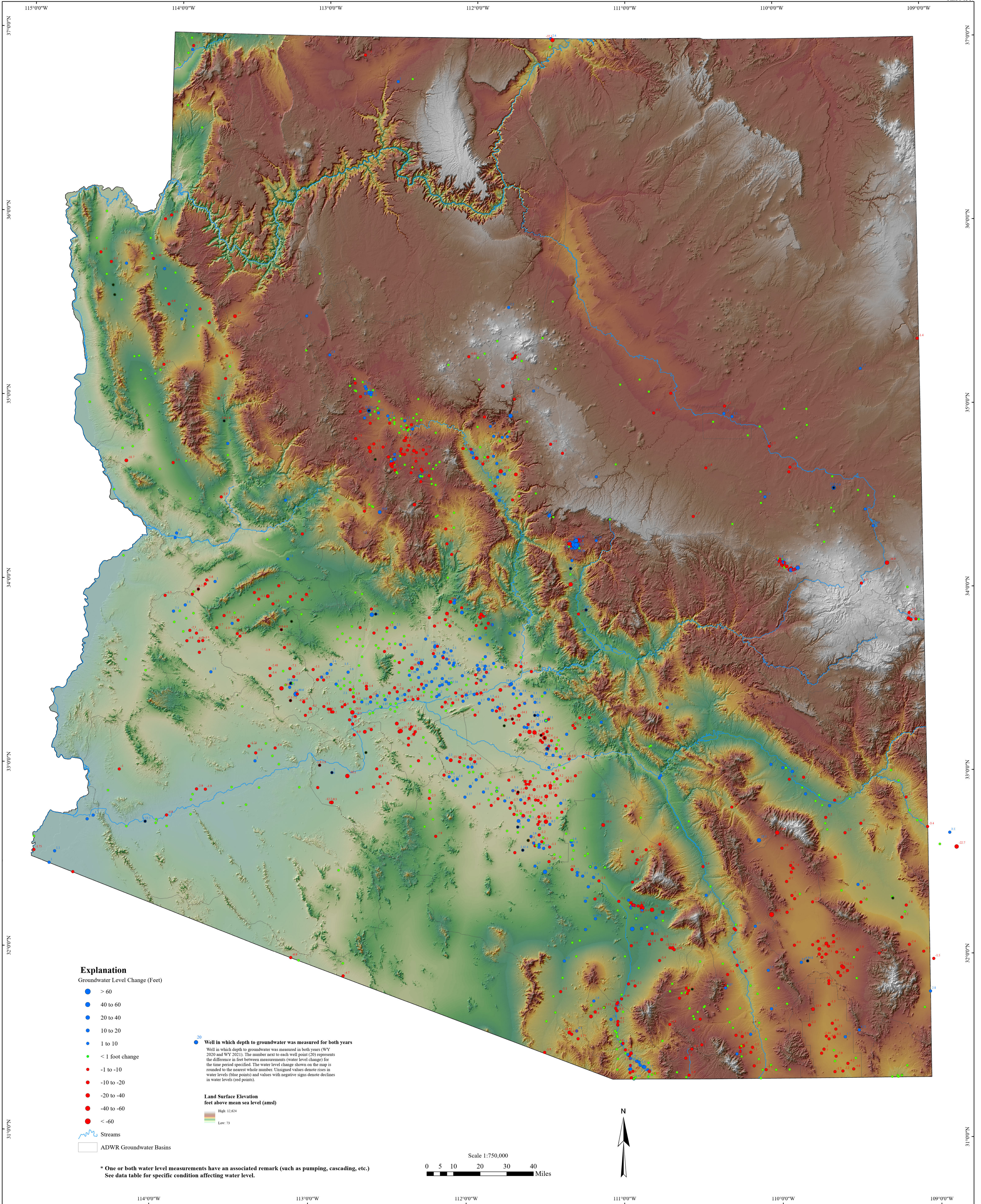
## GROUNDWATER LEVEL CHANGES IN ARIZONA WATER YEARS 2011 - 2021 (PLATE 2)

September 2025

North American Datum 1983  
N:\Basic Data\Reports\  
Water Level Change Reports\  
Water Level Change Report 2021\Maps



Hydrology Division



For data go to:  
<https://app.azwater.gov/gwsi/SearchGWSI.aspx>

For more information or copies contact:  
ADWR Information Services  
1110 W Washington Street, Suite 310  
Phoenix, AZ 85007  
(602) 771-8500  
www.azwater.gov

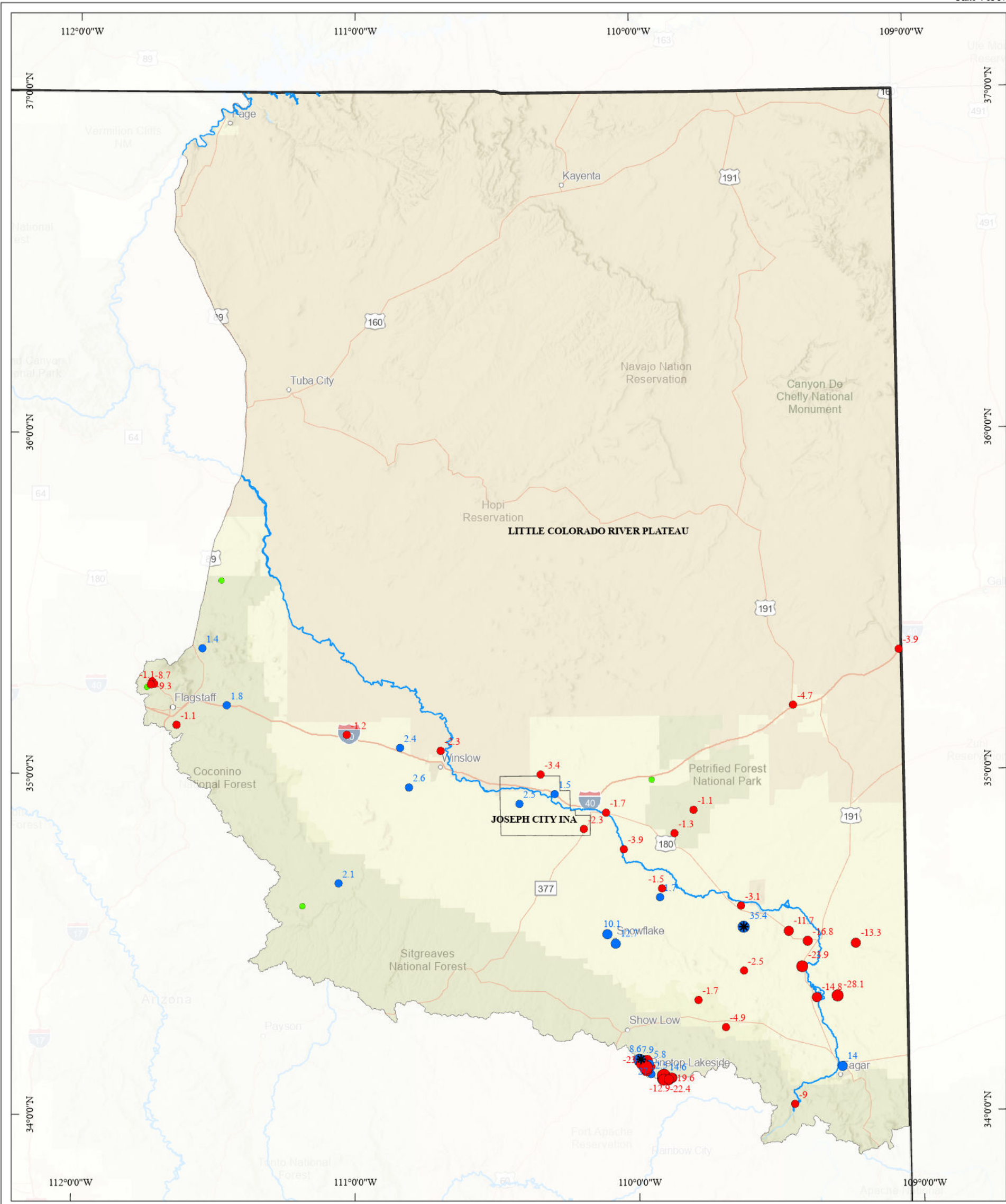
### GROUNDWATER LEVEL CHANGES IN ARIZONA WATER YEARS 2020 - 2021 (PLATE 3)

September 2025

North American Datum 1983  
N:\Basic Data\Reports\  
Water Level Change Reports\  
Water Level Change Report 2021\Maps



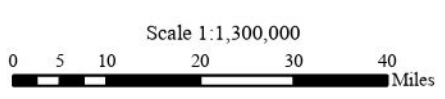
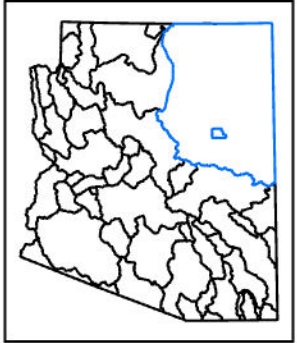
Hydrology Division



**Explanation**

- Groundwater Level Change (Feet)**
- > 60
  - 40 to 60
  - 20 to 40
  - 10 to 20
  - 1 to 10
  - < 1 foot change
  - -1 to -10
  - -10 to -20
  - -20 to -40
  - -40 to -60
  - < -60
- Roadways
  - Streams
  - ADWR Groundwater Sub-basins
  - State Boundary

**ARIZONA GROUNDWATER BASINS**



- 20 Well in which depth to groundwater was measured for both years
- Well in which depth to groundwater was measured in both years (WY 2011 and WY 2021). The number next to each well point (20) represents the difference in feet between measurements (water level change) for the time period specified. The water level change shown on the map is rounded to the nearest whole number. Unsigned values denote rises in water levels (blue points) and values with negative signs denote declines in water levels (red points).
- \* One or both water level measurements have an associated remark (such as pumping, cascading, etc.). See data table for specific condition affecting water level.



For data go to:  
<https://app.azwater.gov/gwsi/SearchGWSI.aspx>

For more information or copies contact:  
ADWR Information Services  
1110 W Washington Street, Suite 310  
Phoenix, AZ 85007  
(602) 771-8500  
[www.azwater.gov](http://www.azwater.gov)

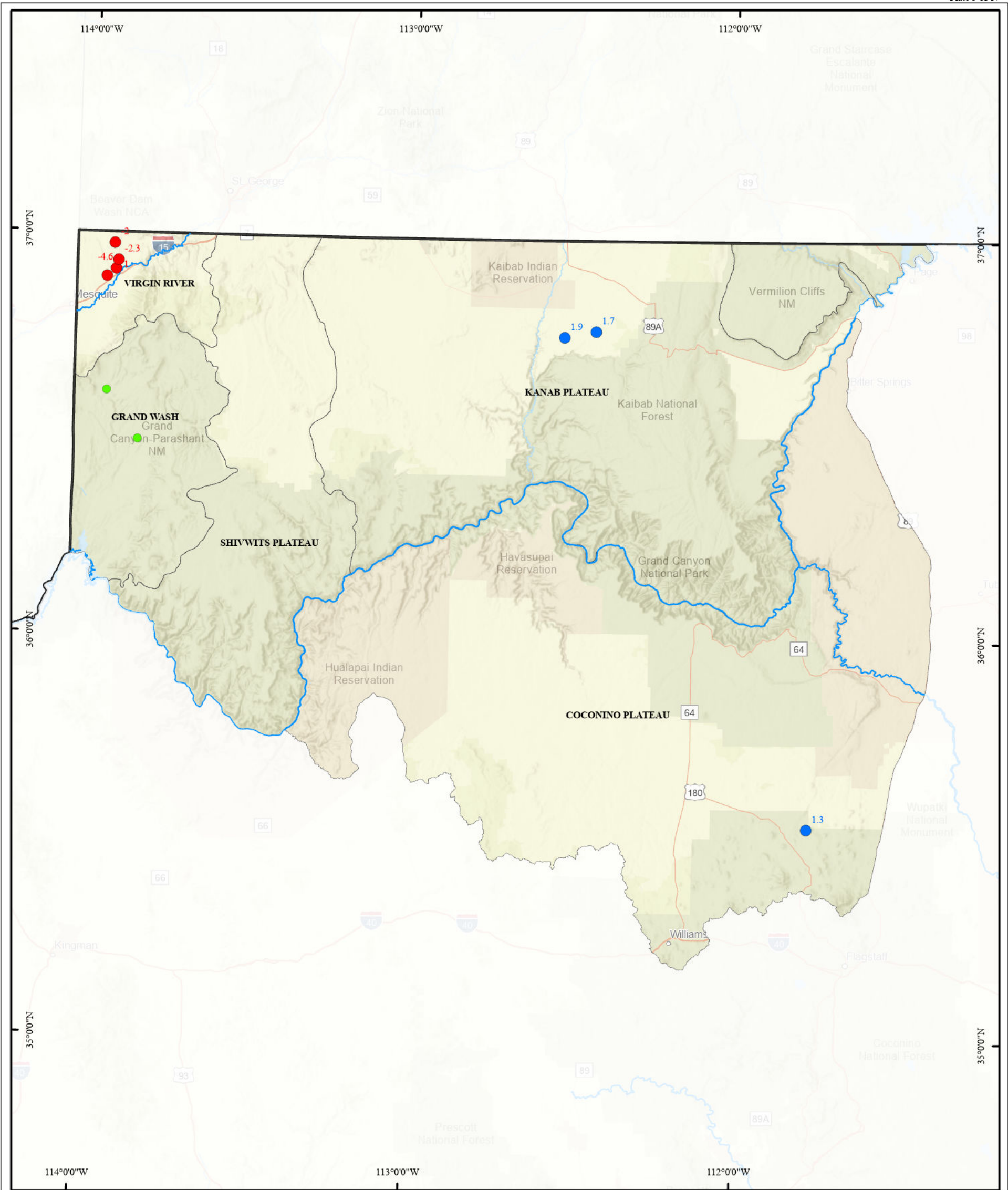
**GROUNDWATER LEVEL CHANGES IN ARIZONA  
WATER YEARS 2011 - 2021 (PLATE 4)**

September 2025

North American Datum 1983  
N:\Basic Data\Reports\  
Water Level Change Reports\  
Water Level Change Report 2021\Maps



Hydrology Division



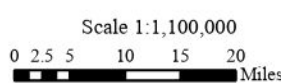
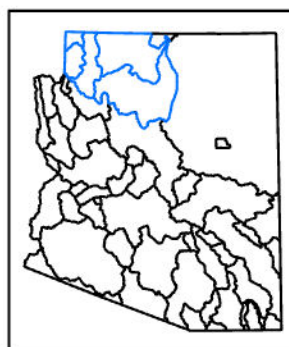
### Explanation

Groundwater Level Change (Feet)

- > 60
- 40 to 60
- 20 to 40
- 10 to 20
- 1 to 10
- < 1 foot change
- -1 to -10
- -10 to -20
- -20 to -40
- -40 to -60
- < -60

- Roadways
- Streams
- ADWR Groundwater Sub-basins
- State Boundary

### ARIZONA GROUNDWATER BASINS



- <sup>20</sup> Well in which depth to groundwater was measured for both years

Well in which depth to groundwater was measured in both years (WY 2011 and WY 2021). The number next to each well point (20) represents the difference in feet between measurements (water level change) for the time period specified. The water level change shown on the map is rounded to the nearest whole number. Unsigned values denote rises in water levels (blue points) and values with negative signs denote declines in water levels (red points).

\* One or both water level measurements have an associated remark (such as pumping, cascading, etc.). See data table for specific condition affecting water level.



For data go to:  
<https://app.azwater.gov/gwsi/SearchGWSI.aspx>

For more information or copies contact:  
ADWR Information Services  
1110 W Washington Street, Suite 310  
Phoenix, AZ 85007  
(602) 771-8500  
[www.azwater.gov](http://www.azwater.gov)

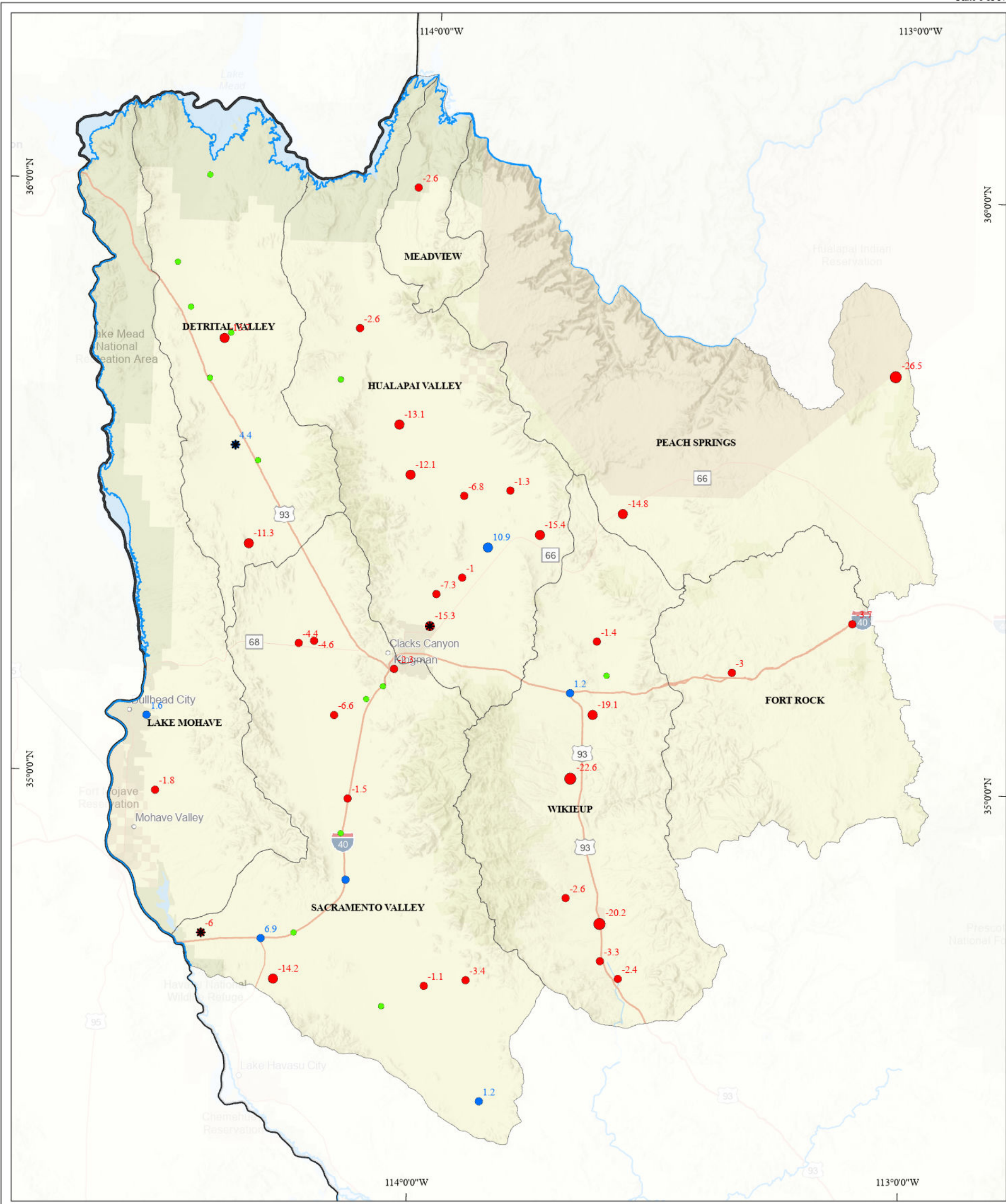
## GROUNDWATER LEVEL CHANGES IN ARIZONA WATER YEARS 2011 - 2021 (PLATE 5)

September 2025

North American Datum 1983  
N:\Basic Data\Reports\  
Water Level Change Reports\  
Water Level Change Report 2021\Maps



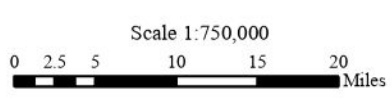
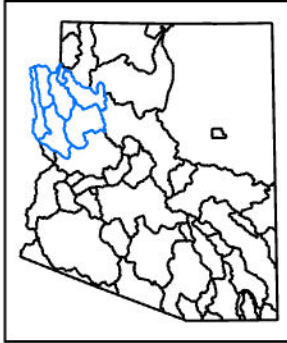
Hydrology Division



**Explanation**

- Groundwater Level Change (Feet)**
- > 60
  - 40 to 60
  - 20 to 40
  - 10 to 20
  - 1 to 10
  - < 1 foot change
  - -1 to -10
  - -10 to -20
  - -20 to -40
  - -40 to -60
  - < -60
- Roadways
  - Streams
  - ADWR Groundwater Sub-basins
  - State Boundary

ARIZONA GROUNDWATER BASINS



- 20 Well in which depth to groundwater was measured for both years
- Well in which depth to groundwater was measured in both years (WY 2011 and WY 2021). The number next to each well point (20) represents the difference in feet between measurements (water level change) for the time period specified. The water level change shown on the map is rounded to the nearest whole number. Unsigned values denote rises in water levels (blue points) and values with negative signs denote declines in water levels (red points).
- \* One or both water level measurements have an associated remark (such as pumping, cascading, etc.). See data table for specific condition affecting water level.



For data go to:  
<https://app.azwater.gov/gwsi/SearchGWSI.aspx/>

For more information or copies contact:  
ADWR Information Services  
1110 W Washington Street, Suite 310  
Phoenix, AZ 85007  
(602) 771-8500  
[www.azwater.gov](http://www.azwater.gov)

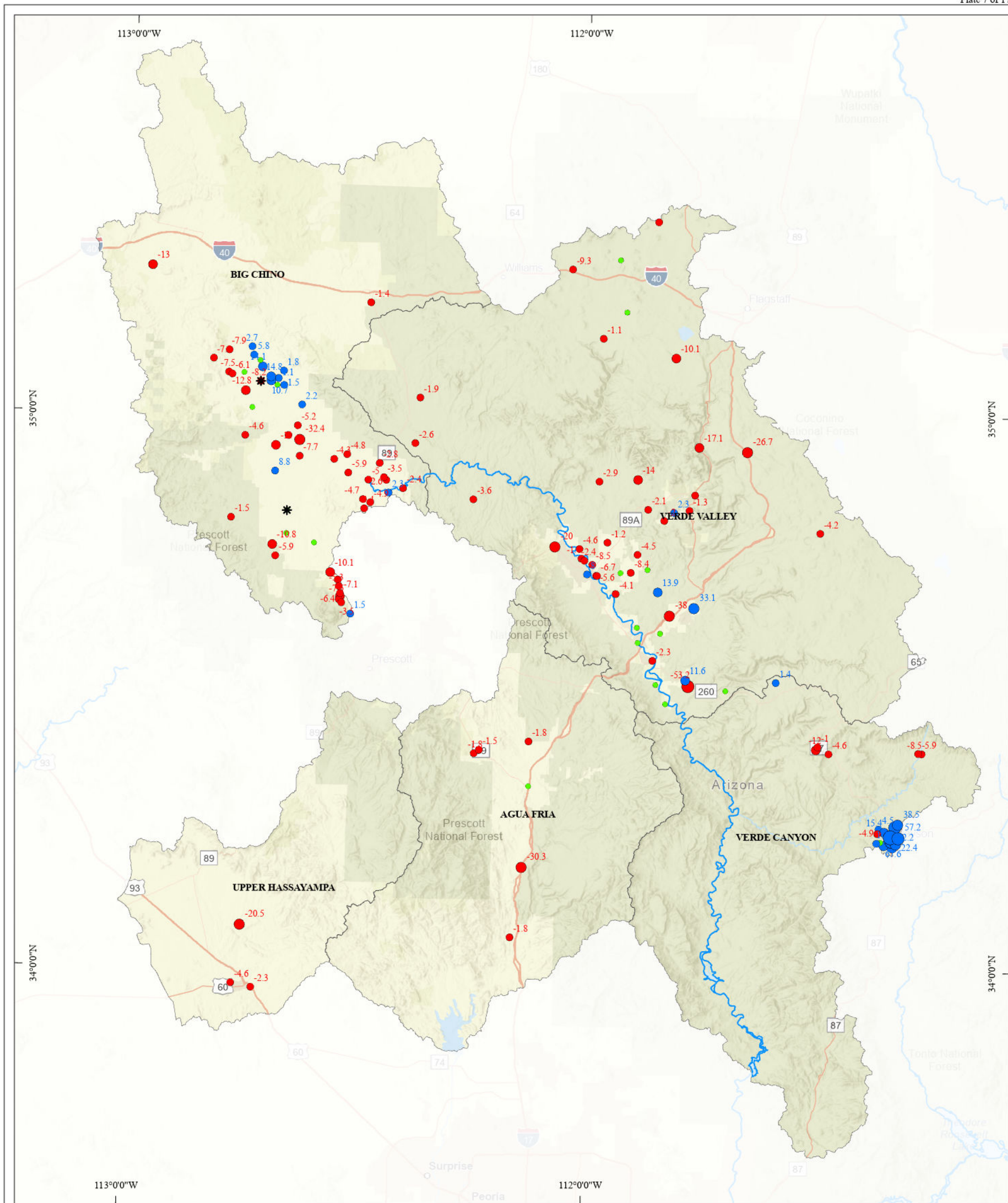
**GROUNDWATER LEVEL CHANGES IN ARIZONA  
WATER YEARS 2011 - 2021 (PLATE 6)**

September 2025

North American Datum 1983  
N:\Basic Data\Reports\  
Water Level Change Reports\  
Water Level Change Report 2021\Maps



Hydrology Division



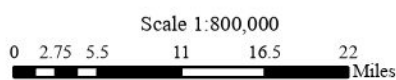
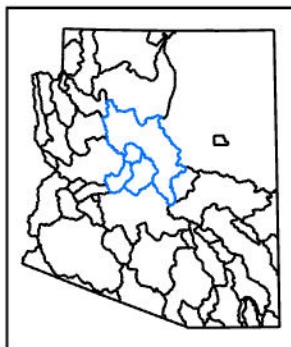
**Explanation**

Groundwater Level Change (Feet)

- > 60
- 40 to 60
- 20 to 40
- 10 to 20
- 1 to 10
- < 1 foot change
- -1 to -10
- -10 to -20
- -20 to -40
- -40 to -60
- < -60

- Roadways
- Streams
- ADWR Groundwater Sub-basins

ARIZONA GROUNDWATER BASINS



● 20 Well in which depth to groundwater was measured for both years

Well in which depth to groundwater was measured in both years (WY 2011 and WY 2021). The number next to each well point (20) represents the difference in feet between measurements (water level change) for the time period specified. The water level change shown on the map is rounded to the nearest whole number. Unsigned values denote rises in water levels (blue points) and values with negative signs denote declines in water levels (red points).

\* One or both water level measurements have an associated remark (such as pumping, cascading, etc.). See data table for specific condition affecting water level.



For data go to:  
<https://app.azwater.gov/gwsi/SearchGWSI.aspx>

For more information or copies contact:  
ADWR Information Services  
1110 W Washington Street, Suite 310  
Phoenix, AZ 85007  
(602) 771-8500  
[www.azwater.gov](http://www.azwater.gov)

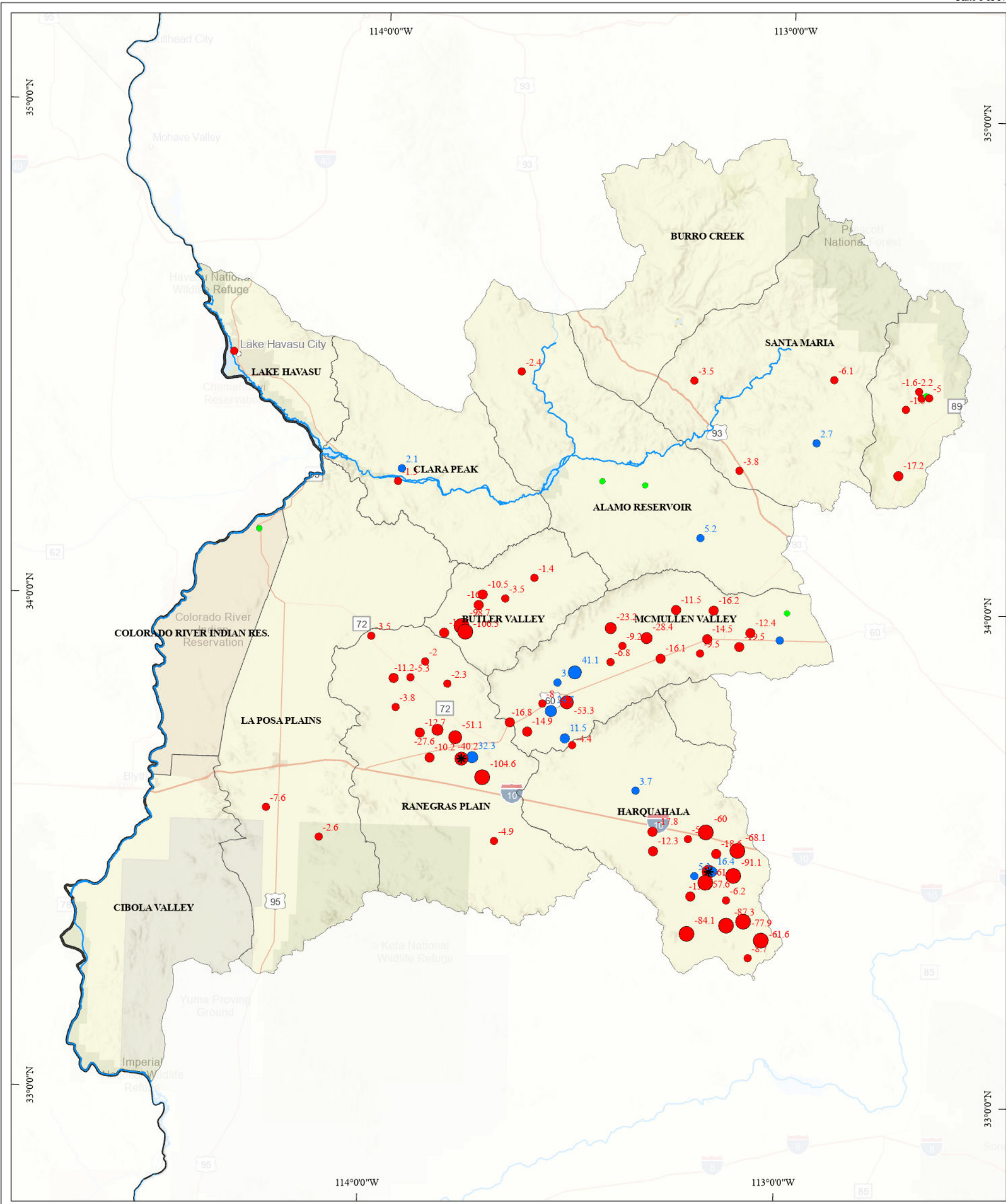
**GROUNDWATER LEVEL CHANGES IN ARIZONA  
WATER YEARS 2011 - 2021 (PLATE 7)**

September 2025

North American Datum 1983  
N: Basic Data/Reports/  
Water Level Change Reports/  
Water Level Change Report 2021/Maps



Hydrology Division



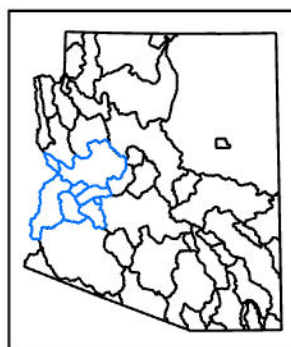
**Explanation**

Groundwater Level Change (Feet)

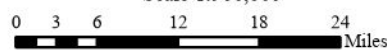
- > 60
- 40 to 60
- 20 to 40
- 10 to 20
- 1 to 10
- < 1 foot change
- -1 to -10
- -10 to -20
- -20 to -40
- -40 to -60
- < -60

- Roadways
- Streams
- ADWR Groundwater Sub-basins
- State Boundary

ARIZONA GROUNDWATER BASINS



Scale 1:900,000



- 20 Well in which depth to groundwater was measured for both years

Well in which depth to groundwater was measured in both years (WY 2011 and WY 2021). The number next to each well point (20) represents the difference in feet between measurements (water level change) for the time period specified. The water level change shown on the map is rounded to the nearest whole number. Unsigned values denote rises in water levels (blue points) and values with negative signs denote declines in water levels (red points).

\* One or both water level measurements have an associated remark (such as pumping, cascading, etc.). See data table for specific condition affecting water level.



For data go to:  
<https://app.azwater.gov/gwsi/SearchGWSI.aspx>

For more information or copies contact:  
ADWR Information Services  
1110 W Washington Street, Suite 310  
Phoenix, AZ 85007  
(602) 771-8500  
[www.azwater.gov](http://www.azwater.gov)

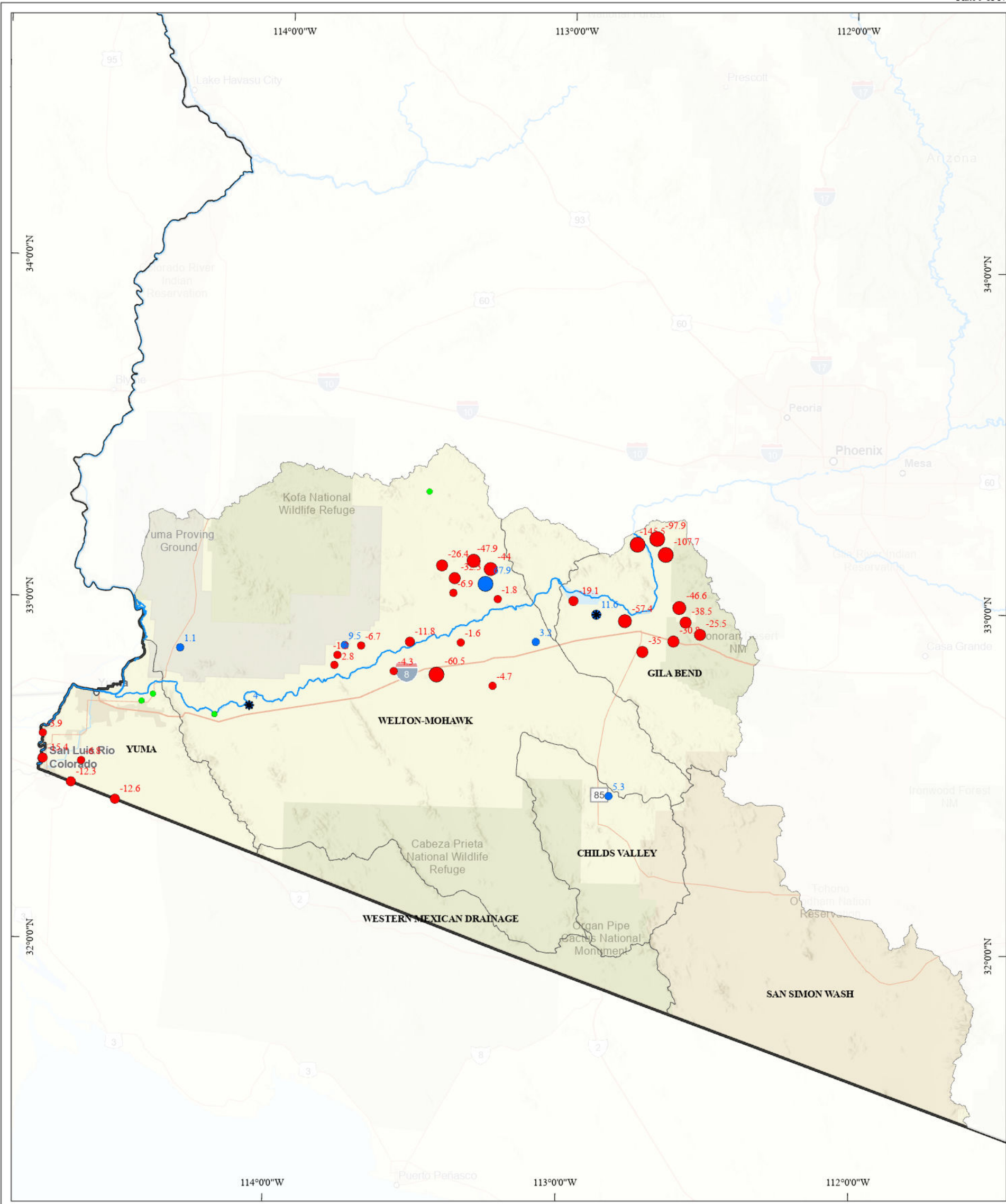
**GROUNDWATER LEVEL CHANGES IN ARIZONA  
WATER YEARS 2011 - 2021 (PLATE 8)**

September 2025

North American Datum 1983  
N:\Basic Data\Reports\  
Water Level Change Reports\  
Water Level Change Report 2021\Maps



Hydrology Division



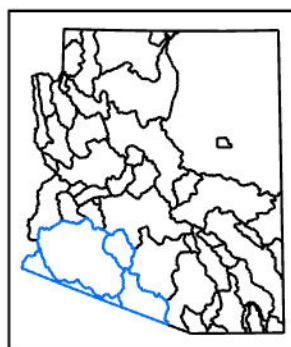
**Explanation**

Groundwater Level Change (Feet)

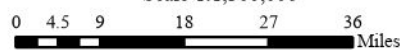
- > 60
- 40 to 60
- 20 to 40
- 10 to 20
- 1 to 10
- < 1 foot change
- -1 to -10
- -10 to -20
- -20 to -40
- -40 to -60
- < -60

- Roadways
- Streams
- ADWR Groundwater Sub-basins
- State Boundary

ARIZONA GROUNDWATER BASINS



Scale 1:1,300,000



● 20 Well in which depth to groundwater was measured for both years

Well in which depth to groundwater was measured in both years (WY 2011 and WY 2021). The number next to each well point (20) represents the difference in feet between measurements (water level change) for the time period specified. The water level change shown on the map is rounded to the nearest whole number. Unsigned values denote rises in water levels (blue points) and values with negative signs denote declines in water levels (red points).

\* One or both water level measurements have an associated remark (such as pumping, cascading, etc.). See data table for specific condition affecting water level.



For data go to:  
<https://app.azwater.gov/gwsi/SearchGWSI.aspx>

For more information or copies contact:  
ADWR Information Services  
1110 W Washington Street, Suite 310  
Phoenix, AZ 85007  
(602) 771-8500  
[www.azwater.gov](http://www.azwater.gov)

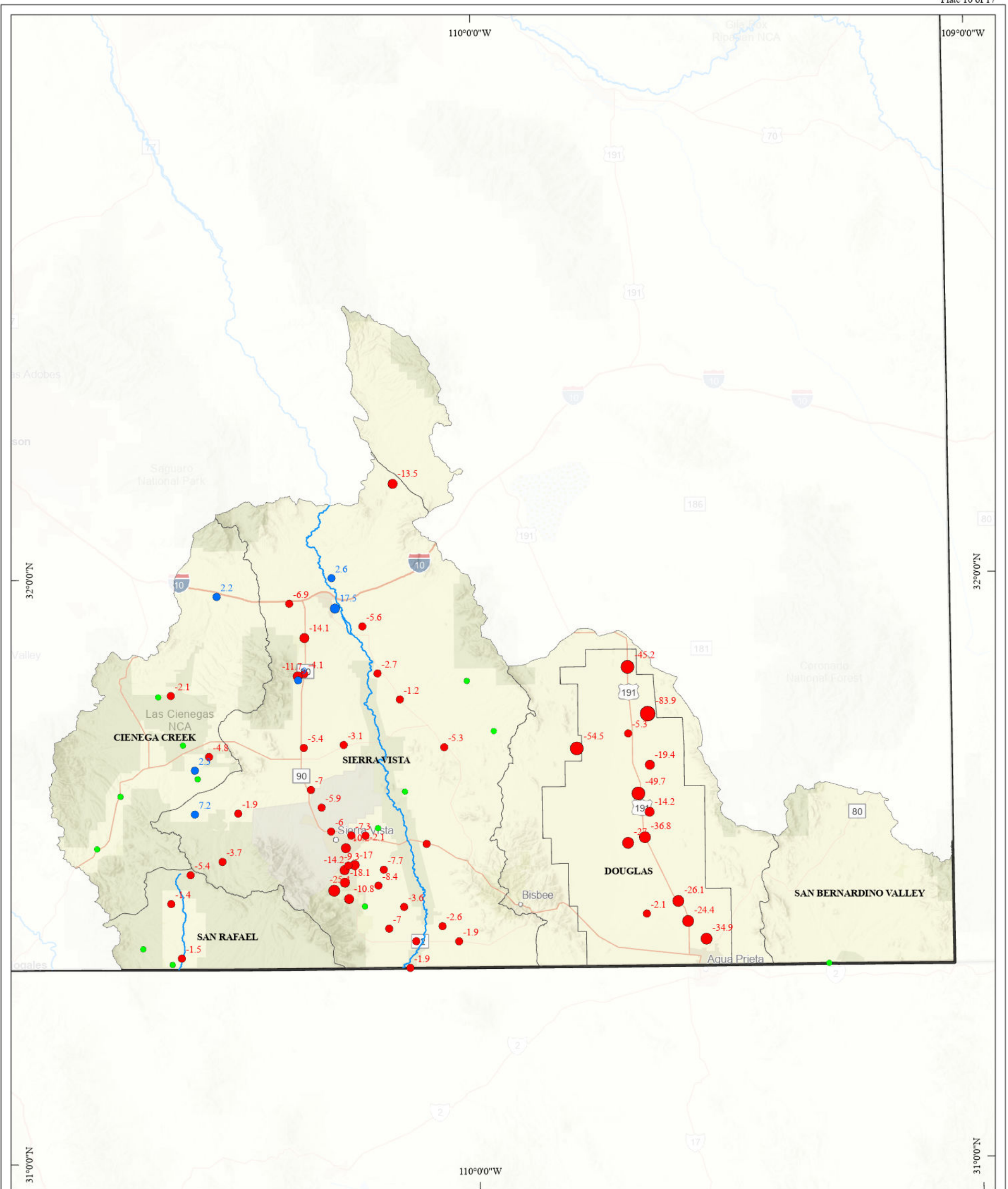
**GROUNDWATER LEVEL CHANGES IN ARIZONA  
WATER YEARS 2011 - 2021 (PLATE 9)**

September 2025

North American Datum 1983  
N:\Basic Data\Reports\  
Water Level Change Reports\  
Water Level Change Report 2021\Maps



Hydrology Division



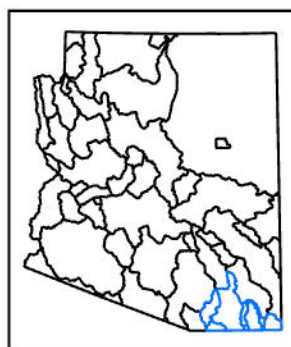
**Explanation**

Groundwater Level Change (Feet)

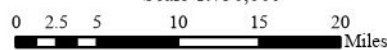
- > 60
- 40 to 60
- 20 to 40
- 10 to 20
- 1 to 10
- < 1 foot change
- -1 to -10
- -10 to -20
- -20 to -40
- -40 to -60
- < -60

- Roadways
- Streams
- ADWR Groundwater Sub-basins
- State Boundary

ARIZONA GROUNDWATER BASINS



Scale 1:750,000



- <sup>20</sup> Well in which depth to groundwater was measured for both years

Well in which depth to groundwater was measured in both years (WY 2011 and WY 2021). The number next to each well point (20) represents the difference in feet between measurements (water level change) for the time period specified. The water level change shown on the map is rounded to the nearest whole number. Unsigned values denote rises in water levels (blue points) and values with negative signs denote declines in water levels (red points).

\* One or both water level measurements have an associated remark (such as pumping, cascading, etc.). See data table for specific condition affecting water level.



For data go to:  
<https://app.azwater.gov/gwsi/SearchGWSI.aspx>

For more information or copies contact:  
ADWR Information Services  
1110 W Washington Street, Suite 310  
Phoenix, AZ 85007  
(602) 771-8500  
[www.azwater.gov](http://www.azwater.gov)

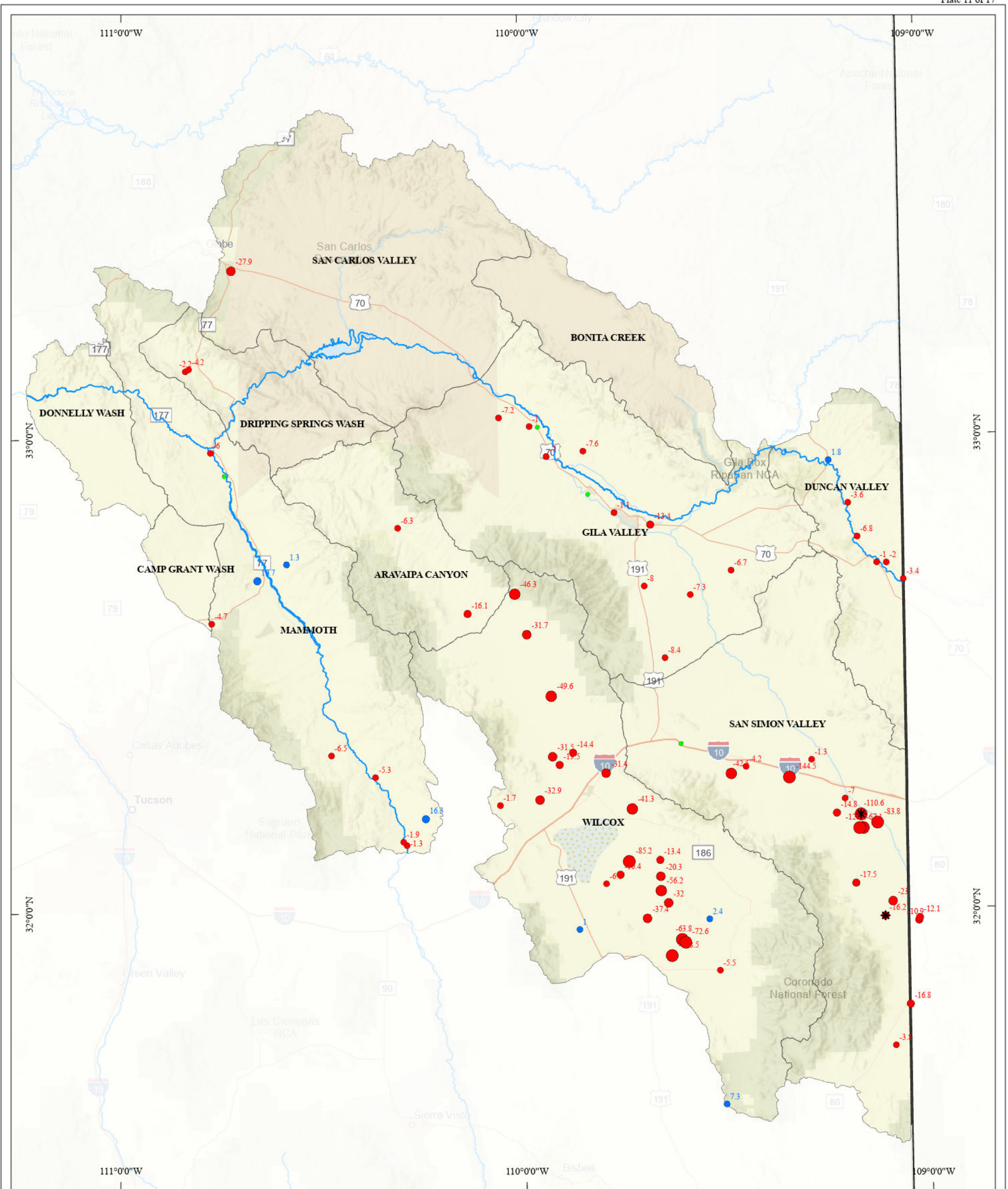
**GROUNDWATER LEVEL CHANGES IN ARIZONA  
WATER YEARS 2011 - 2021 (PLATE 10)**

September 2025

North American Datum 1983  
N:\Basic Data\Reports\  
Water Level Change Reports\  
Water Level Change Report 2021\Maps



Hydrology Division



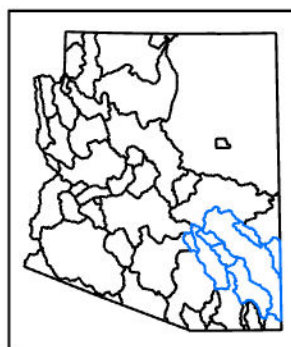
**Explanation**

Groundwater Level Change (Feet)

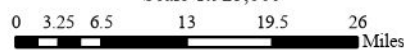
- > 60
- 40 to 60
- 20 to 40
- 10 to 20
- 1 to 10
- < 1 foot change
- -1 to -10
- -10 to -20
- -20 to -40
- -40 to -60
- < -60

- Roadways
- Streams
- ADWR Groundwater Sub-basins
- State Boundary

ARIZONA GROUNDWATER BASINS



Scale 1:925,000



● 20 Well in which depth to groundwater was measured for both years

Well in which depth to groundwater was measured in both years (WY 2011 and WY 2021). The number next to each well point (20) represents the difference in feet between measurements (water level change) for the time period specified. The water level change shown on the map is rounded to the nearest whole number. Unsigned values denote rises in water levels (blue points) and values with negative signs denote declines in water levels (red points).

\* One or both water level measurements have an associated remark (such as pumping, cascading, etc.). See data table for specific condition affecting water level.



For data go to:  
<https://app.azwater.gov/gwsi/SearchGWSI.aspx>

For more information or copies contact:  
ADWR Information Services  
1110 W Washington Street, Suite 310  
Phoenix, AZ 85007  
(602) 771-8500  
[www.azwater.gov](http://www.azwater.gov)

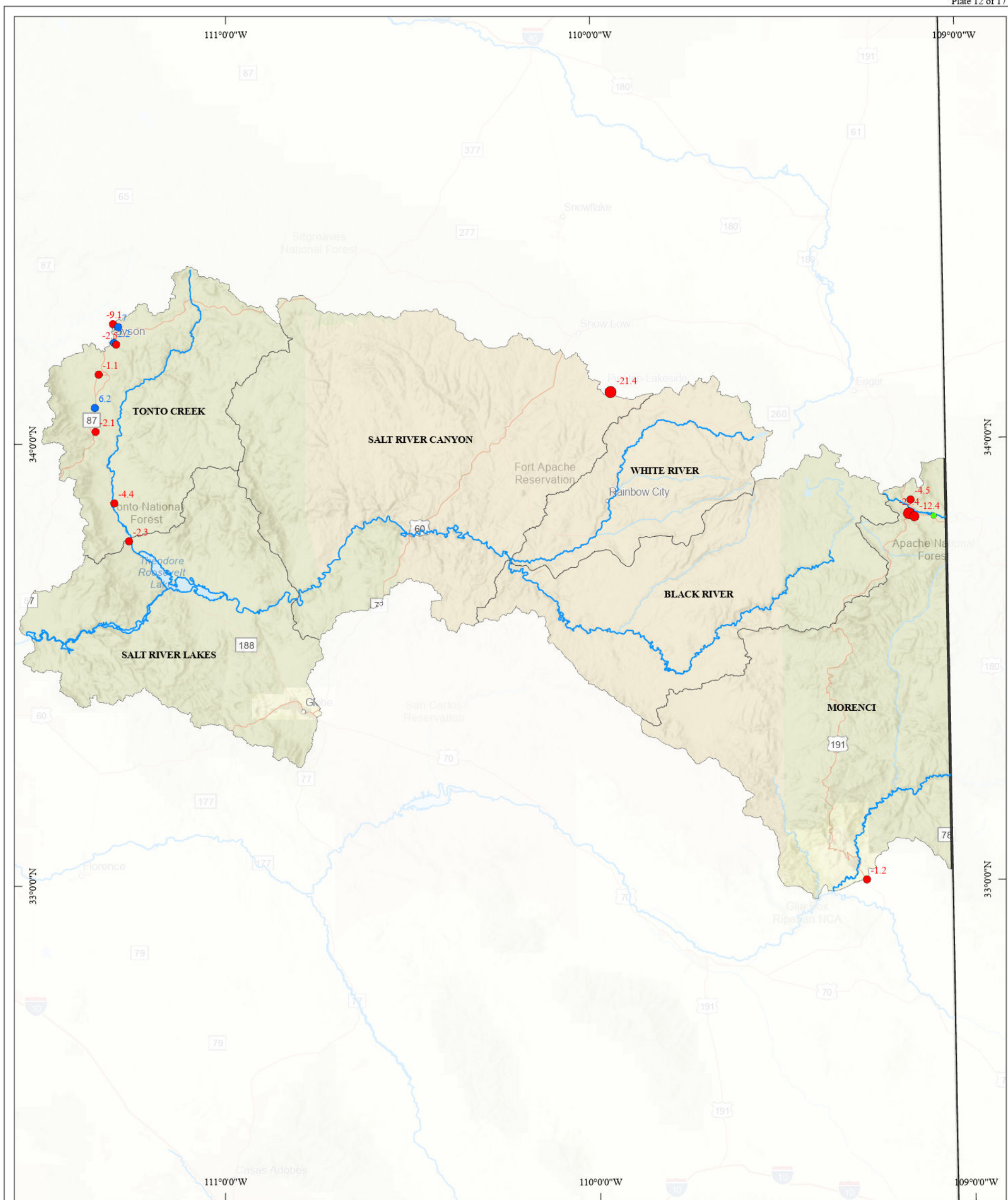
**GROUNDWATER LEVEL CHANGES IN ARIZONA  
WATER YEARS 2011 - 2021 (PLATE 11)**

September 2025

North American Datum 1983  
N: Basic Data/Reports/  
Water Level Change Reports/  
Water Level Change Report 2021/Maps



Hydrology Division



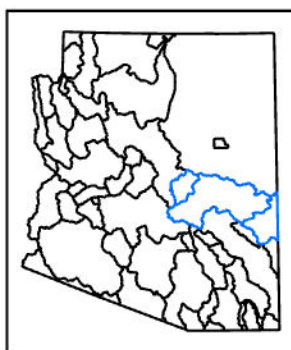
**Explanation**

Groundwater Level Change (Feet)

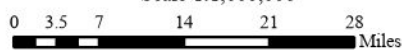
- > 60
- 40 to 60
- 20 to 40
- 10 to 20
- 1 to 10
- < 1 foot change
- -1 to -10
- -10 to -20
- -20 to -40
- -40 to -60
- < -60

- Roadways
- Streams
- ADWR Groundwater Sub-basins
- State Boundary

ARIZONA GROUNDWATER BASINS



Scale 1:1,000,000



● 20 Well in which depth to groundwater was measured for both years

Well in which depth to groundwater was measured in both years (WY 2011 and WY 2021). The number next to each well point (20) represents the difference in feet between measurements (water level change) for the time period specified. The water level change shown on the map is rounded to the nearest whole number. Unsigned values denote rises in water levels (blue points) and values with negative signs denote declines in water levels (red points).

\* One or both water level measurements have an associated remark (such as pumping, cascading, etc.). See data table for specific condition affecting water level.



For data go to:  
<https://app.azwater.gov/gwsi/SearchGWSI.aspx>

For more information or copies contact:  
ADWR Information Services  
1110 W Washington Street, Suite 310  
Phoenix, AZ 85007  
(602) 771-8500  
[www.azwater.gov](http://www.azwater.gov)

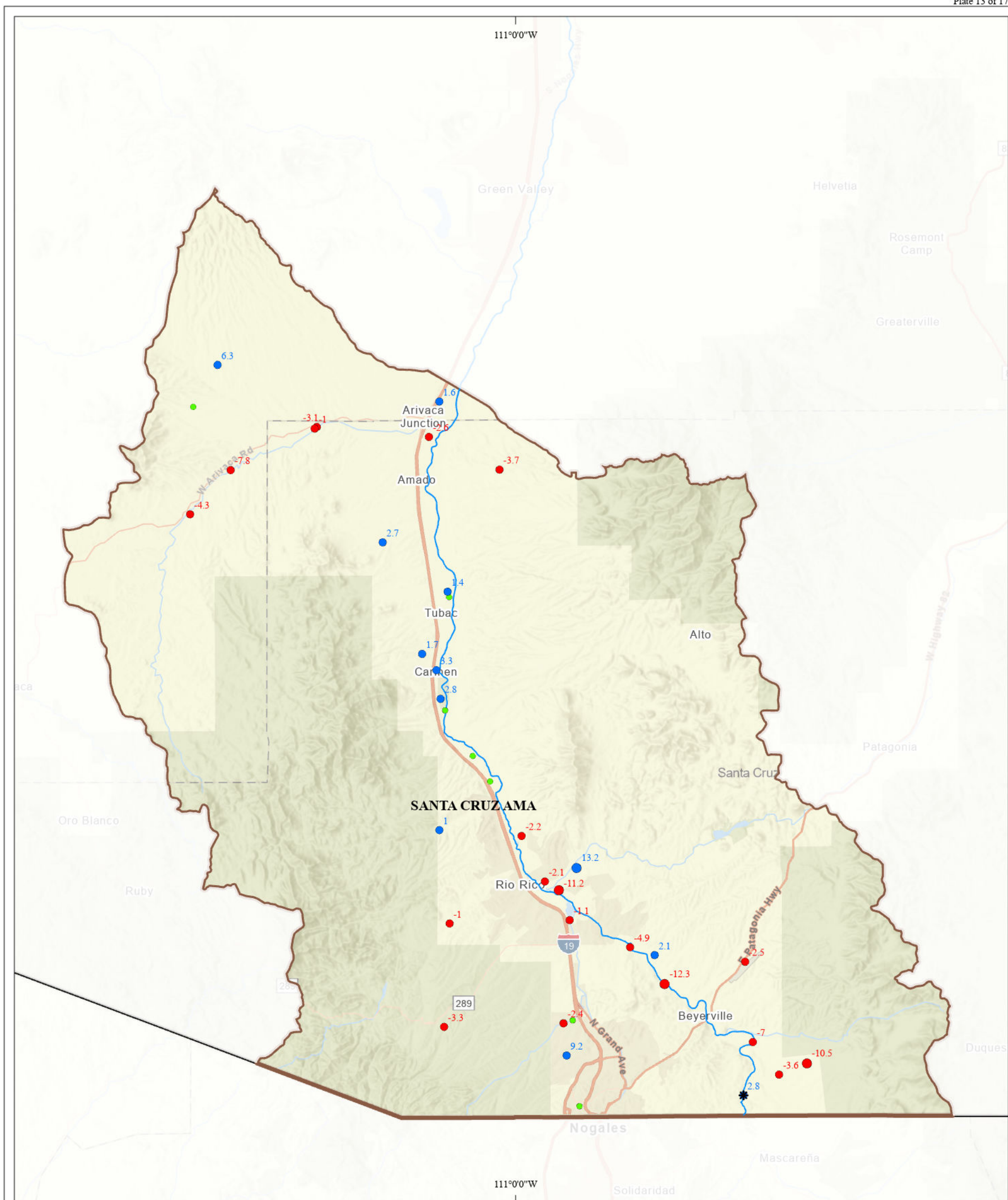
**GROUNDWATER LEVEL CHANGES IN ARIZONA  
WATER YEARS 2011 - 2021 (PLATE 12)**

September 2025

North American Datum 1983  
N:\Basic Data\Reports\  
Water Level Change Reports\  
Water Level Change Report 2021\Maps



Hydrology Division

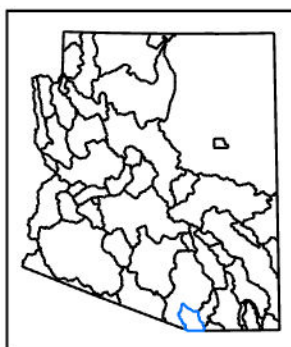


### Explanation

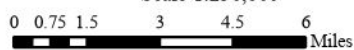
Groundwater Level Change (Feet)

- > 60
  - 40 to 60
  - 20 to 40
  - 10 to 20
  - 1 to 10
  - < 1 foot change
  - -1 to -10
  - -10 to -20
  - -20 to -40
  - -40 to -60
  - < -60
- Roadways
  - Streams
  - ADWR Groundwater Sub-basins
  - Santa Cruz AMA
  - State Boundary

### ARIZONA GROUNDWATER BASINS



Scale 1:250,000



● 20 Well in which depth to groundwater was measured for both years

Well in which depth to groundwater was measured in both years (WY 2011 and WY 2021). The number next to each well point (20) represents the difference in feet between measurements (water level change) for the time period specified. The water level change shown on the map is rounded to the nearest whole number. Unsigned values denote rises in water levels (blue points) and values with negative signs denote declines in water levels (red points).

\* One or both water level measurements have an associated remark (such as pumping, cascading, etc.). See data table for specific condition affecting water level.



For data go to:  
<https://app.azwater.gov/gwsi/SearchGWSI.aspx>

For more information or copies contact:  
ADWR Information Services  
1110 W Washington Street, Suite 310  
Phoenix, AZ 85007  
(602) 771-8500  
[www.azwater.gov](http://www.azwater.gov)

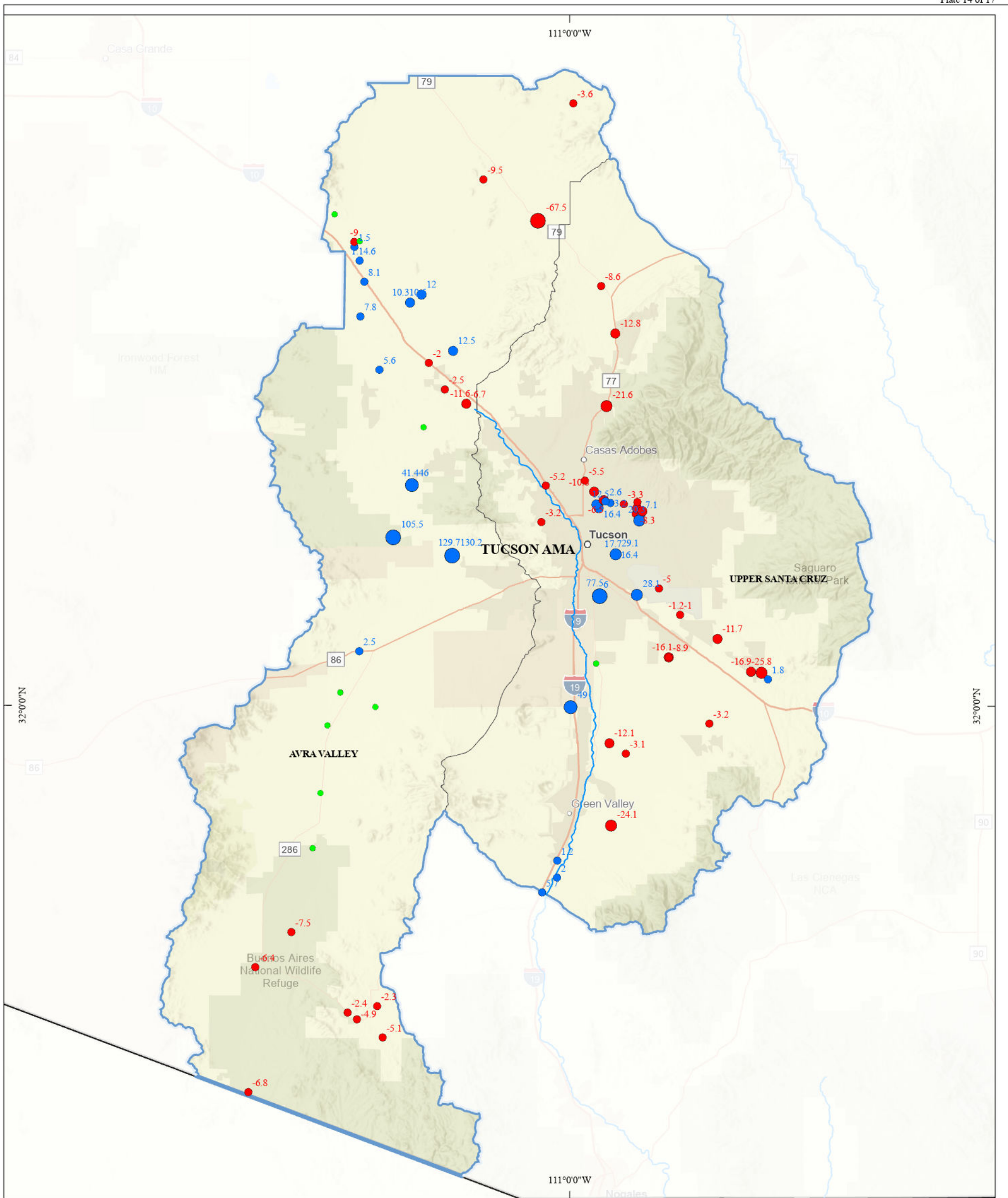
## GROUNDWATER LEVEL CHANGES IN ARIZONA WATER YEARS 2011 - 2021 (PLATE 13)

September 2025

North American Datum 1983  
N:\Basic Data\Reports\  
Water Level Change Reports\  
Water Level Change Report 2021\Maps



Hydrology Division



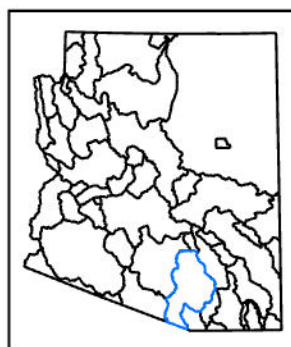
**Explanation**

Groundwater Level Change (Feet)

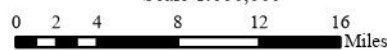
- > 60
- 40 to 60
- 20 to 40
- 10 to 20
- 1 to 10
- < 1 foot change
- -1 to -10
- -10 to -20
- -20 to -40
- -40 to -60
- < -60

- Roadways
- Streams
- ADWR Groundwater Sub-basins
- Tucson AMA
- State Boundary

ARIZONA GROUNDWATER BASINS



Scale 1:600,000



- 20 Well in which depth to groundwater was measured for both years

Well in which depth to groundwater was measured in both years (WY 2011 and WY 2021). The number next to each well point (20) represents the difference in feet between measurements (water level change) for the time period specified. The water level change shown on the map is rounded to the nearest whole number. Unsigned values denote rises in water levels (blue points) and values with negative signs denote declines in water levels (red points).

\* One or both water level measurements have an associated remark (such as pumping, cascading, etc.). See data table for specific condition affecting water level.



For data go to:  
<https://app.azwater.gov/gwsi/SearchGWSL.aspx>

For more information or copies contact:  
ADWR Information Services  
1110 W Washington Street, Suite 310  
Phoenix, AZ 85007  
(602) 771-8500  
[www.azwater.gov](http://www.azwater.gov)

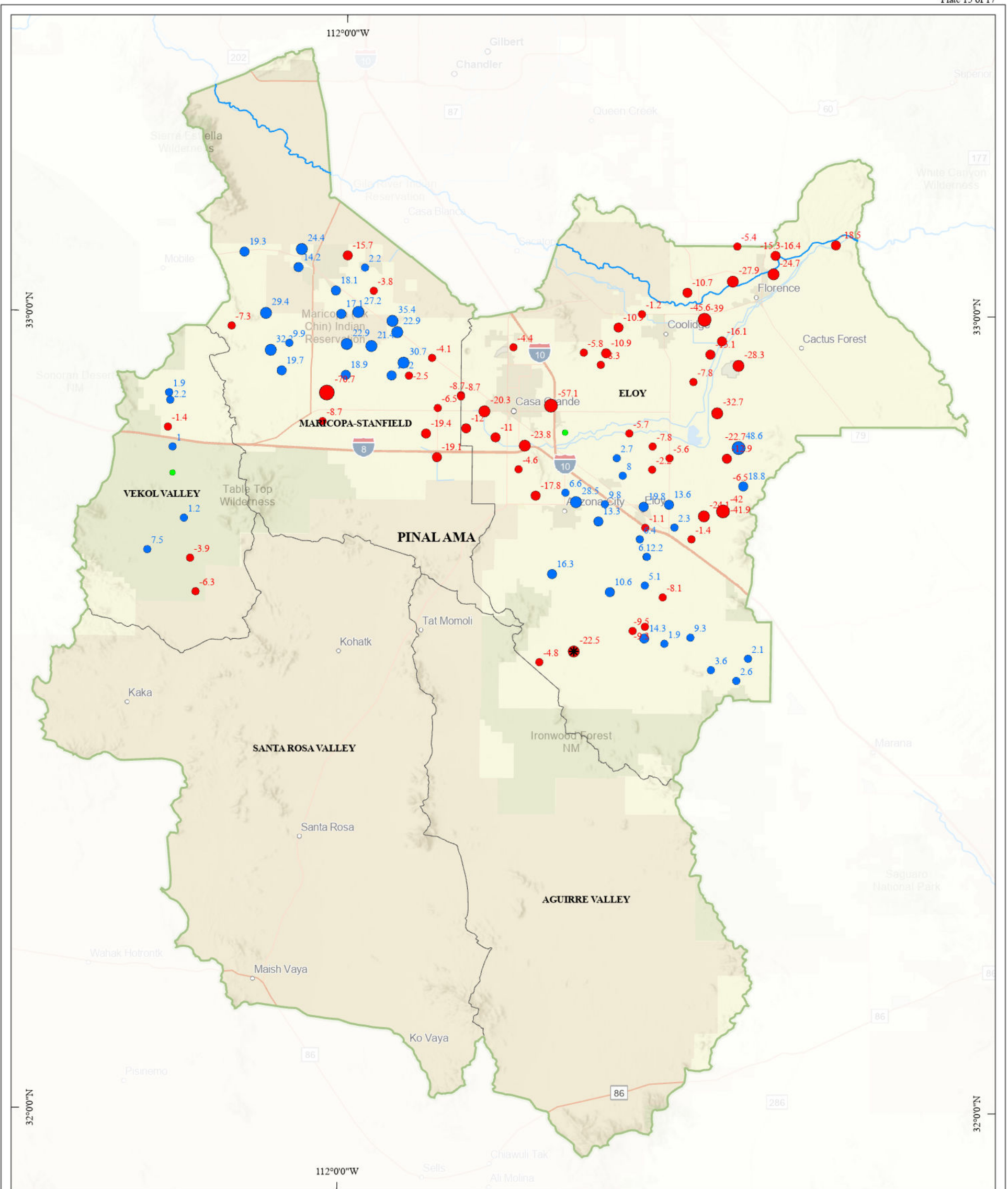
**GROUNDWATER LEVEL CHANGES IN ARIZONA  
WATER YEARS 2011 - 2021 (PLATE 14)**

September 2025

North American Datum 1983  
N:\Basic Data\Reports\  
Water Level Change Reports\  
Water Level Change Report 2021\Maps



Hydrology Division



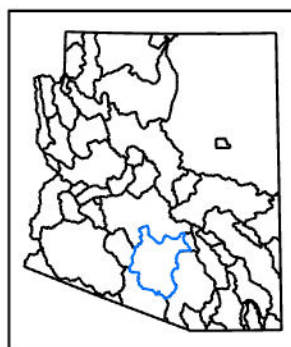
**Explanation**

Groundwater Level Change (Feet)

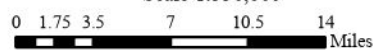
- > 60
- 40 to 60
- 20 to 40
- 10 to 20
- 1 to 10
- < 1 foot change
- -1 to -10
- -10 to -20
- -20 to -40
- -40 to -60
- < -60

- Roadways
- Streams
- ADWR Groundwater Sub-basins
- Pinal AMA

ARIZONA GROUNDWATER BASINS



Scale 1:550,000



- 20 Well in which depth to groundwater was measured for both years

Well in which depth to groundwater was measured in both years (WY 2011 and WY 2021). The number next to each well point (20) represents the difference in feet between measurements (water level change) for the time period specified. The water level change shown on the map is rounded to the nearest whole number. Unsigned values denote rises in water levels (blue points) and values with negative signs denote declines in water levels (red points).

\* One or both water level measurements have an associated remark (such as pumping, cascading, etc.). See data table for specific condition affecting water level.



For data go to:  
<https://app.azwater.gov/gwsi/SearchGWSI.aspx>

For more information or copies contact:  
ADWR Information Services  
1110 W Washington Street, Suite 310  
Phoenix, AZ 85007  
(602) 771-8500  
[www.azwater.gov](http://www.azwater.gov)

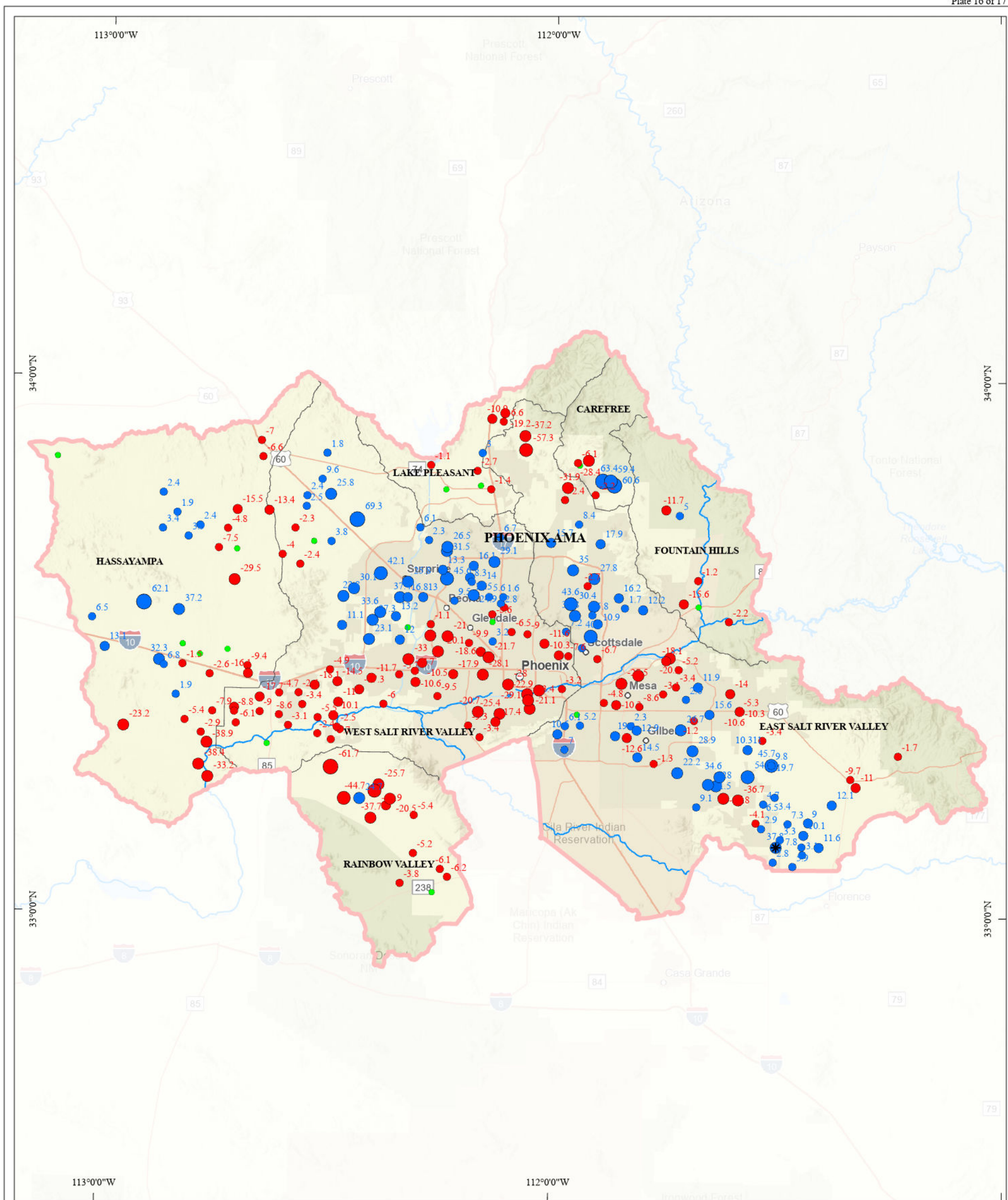
**GROUNDWATER LEVEL CHANGES IN ARIZONA  
WATER YEARS 2011 - 2021 (PLATE 15)**

September 2025

North American Datum 1983  
NAD83 Basic Data Reports  
Water Level Change Reports  
Water Level Change Report 2021/Maps



Hydrology Division



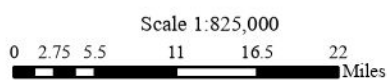
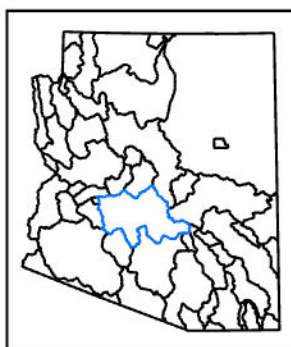
**Explanation**

Groundwater Level Change (Feet)

- > 60
- 40 to 60
- 20 to 40
- 10 to 20
- 1 to 10
- < 1 foot change
- -1 to -10
- -10 to -20
- -20 to -40
- -40 to -60
- < -60

- Roadways
- Streams
- ADWR Groundwater Sub-basins
- Phoenix AMA

ARIZONA GROUNDWATER BASINS



● 20 Well in which depth to groundwater was measured for both years

Well in which depth to groundwater was measured in both years (WY 2011 and WY 2021). The number next to each well point (20) represents the difference in feet between measurements (water level change) for the time period specified. The water level change shown on the map is rounded to the nearest whole number. Unsigned values denote rises in water levels (blue points) and values with negative signs denote declines in water levels (red points).

\* One or both water level measurements have an associated remark (such as pumping, cascading, etc.). See data table for specific condition affecting water level.



For data go to:  
<https://app.azwater.gov/gwsi/SearchGWSL.aspx>

For more information or copies contact:  
ADWR Information Services  
1110 W Washington Street, Suite 310  
Phoenix, AZ 85007  
(602) 771-8500  
[www.azwater.gov](http://www.azwater.gov)

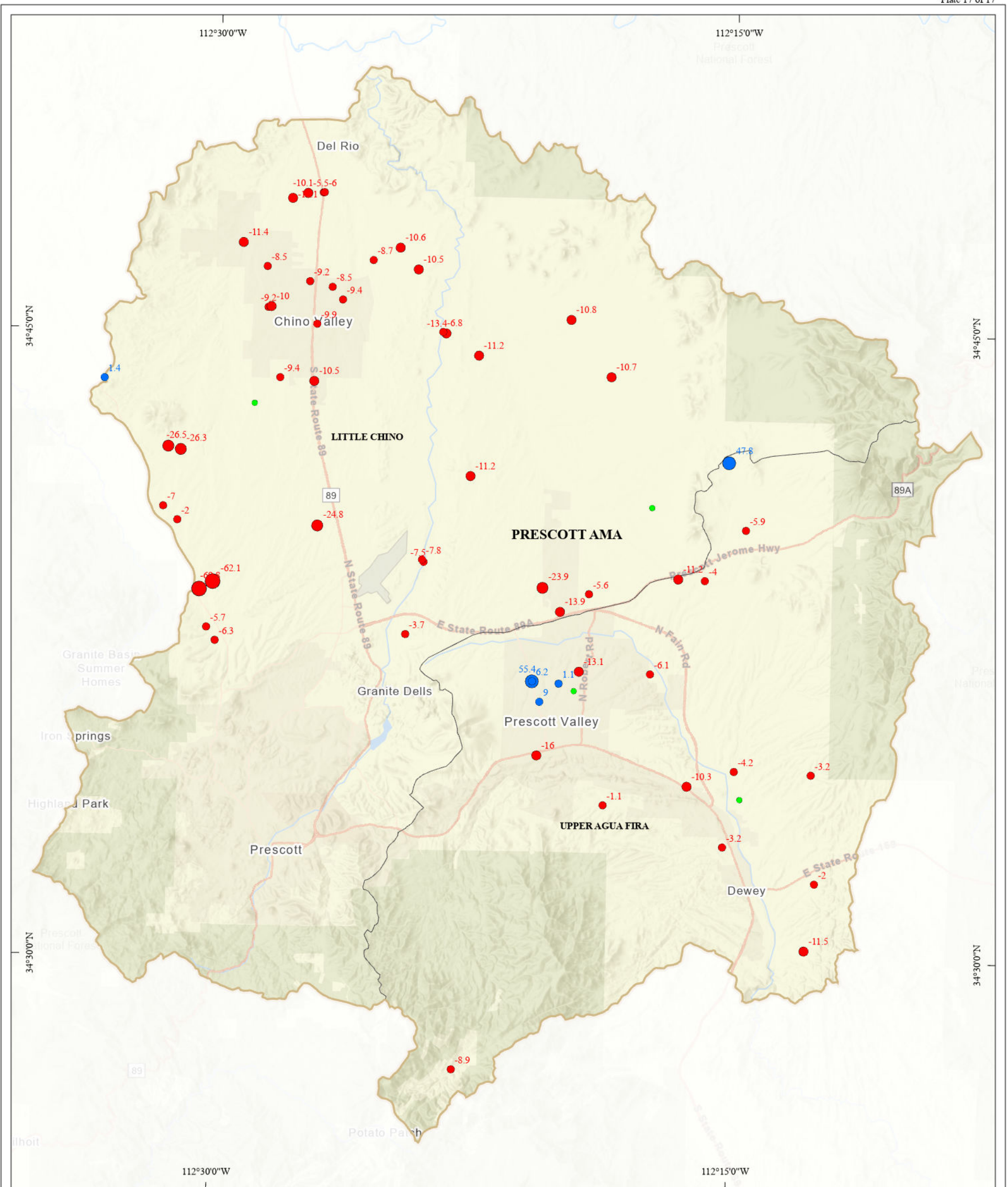
**GROUNDWATER LEVEL CHANGES IN ARIZONA  
WATER YEARS 2011 - 2021 (PLATE 16)**

September 2025

North American Datum 1983  
N:\Basic Data\Reports\Water Level Change Reports\Water Level Change Report 2021\Maps



Hydrology Division



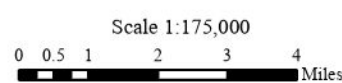
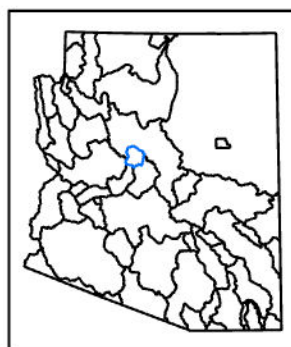
### Explanation

Groundwater Level Change (Feet)

- > 60
- 40 to 60
- 20 to 40
- 10 to 20
- 1 to 10
- < 1 foot change
- -1 to -10
- -10 to -20
- -20 to -40
- -40 to -60
- < -60

- Roadways
- Streams
- ADWR Groundwater Sub-basins
- Prescott AMA

#### ARIZONA GROUNDWATER BASINS



- 20 Well in which depth to groundwater was measured for both years

Well in which depth to groundwater was measured in both years (WY 2011 and WY 2021). The number next to each well point (20) represents the difference in feet between measurements (water level change) for the time period specified. The water level change shown on the map is rounded to the nearest whole number. Unsigned values denote rises in water levels (blue points) and values with negative signs denote declines in water levels (red points).

\* One or both water level measurements have an associated remark (such as pumping, cascading, etc.). See data table for specific condition affecting water level.



For data go to:  
<https://app.azwater.gov/gwsi/SearchGWSI.aspx>

For more information or copies contact:  
ADWR Information Services  
1110 W Washington Street, Suite 310  
Phoenix, AZ 85007  
(602) 771-8500  
[www.azwater.gov](http://www.azwater.gov)

## GROUNDWATER LEVEL CHANGES IN ARIZONA WATER YEARS 2011 - 2021 (PLATE 17)

September 2025

Created By: Carl Job  
North American Datum 1983  
N:\Basic Data\Reports\  
Water Level Change Reports\  
Water Level Change Report 2021\Maps



Hydrology Division