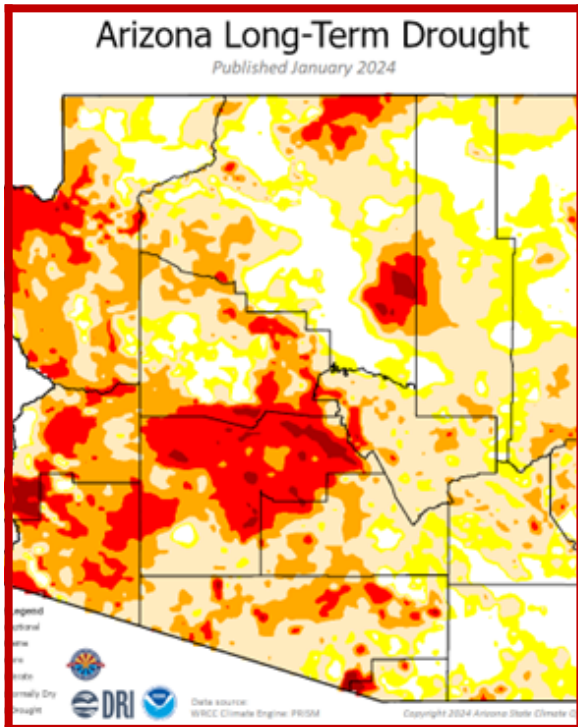
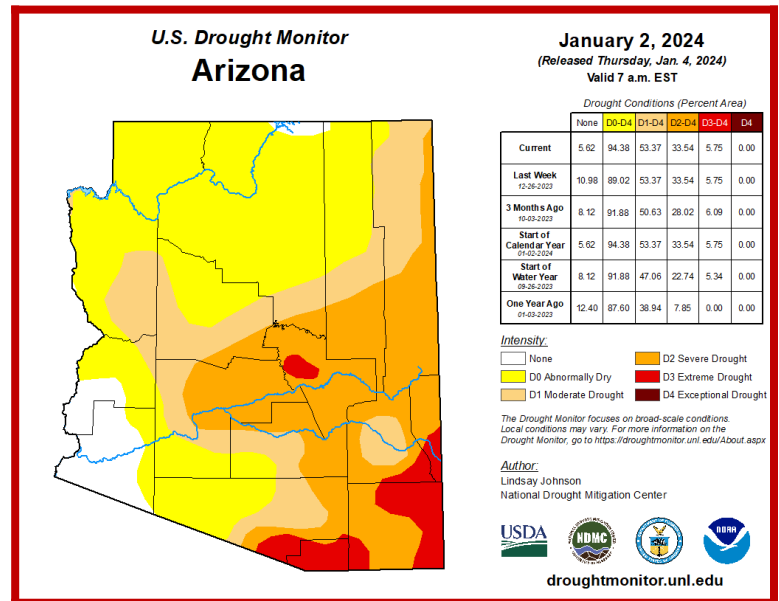


DROUGHT STATUS REPORT

December 2023 Short-Term Drought Status

Central and southern counties received above average amounts of precipitation in December, while Mohave and Coconino counties were below average precipitation. December was the 9th warmest December, statewide, since 1895. At the end of the month, only the Upper Gila basin had reached median levels of snow water equivalent (SWE). All other basins in Arizona were well below median levels of SWE at the end of December.

Yuma and La Paz counties saw slight expansion of areas without short-term drought in December, while Mohave and Coconino counties expanded Abnormally Dry (D0) conditions. Abnormally Dry (D0) conditions also advanced slightly in Maricopa, Pinal, and Pima counties (41% of state), decreasing Moderate (D1) short-term drought to 20% of state. Severe (D2) short-term drought decreased a bit in Maricopa and Pinal counties (28% of state). Extreme (D3) short-term drought remained at 6% of the state, largely in Santa Cruz and portions of Gila, Pima, Cochise, Graham, and Greenlee counties.



October-December 2023 Long-Term Drought Status

Arizona experienced its 5th warmest and 26th driest October to December (since 1895). Exceptional (D4) long-term drought expanded in Maricopa and east-central Coconino counties, while continuing in areas of La Paz and Pima counties. Extreme (D3) long-term drought increased in Mohave, Maricopa, and portions of Coconino, Yavapai, Pinal, and Pima counties. Severe (D2) long-term drought escalated in Mohave, La Paz, Pinal, Pima, and Coconino counties, as well as portions along the Mogollon Rim to the White Mountains. Moderate (D1) long-term drought developed in Gila, Graham, Greenlee, Apache, and Cochise counties. Portions of northern and southeastern counties continued supporting small areas of Abnormally Dry (D0) conditions or no long-term drought.

A strong El Nino is currently reaching its peak with better than a 70% chance of neutral conditions developing by the middle of the spring. As a result, there is only a slight chance precipitation amounts will be in an above normal category over the next couple of months with no tilt in odds beyond that time.