

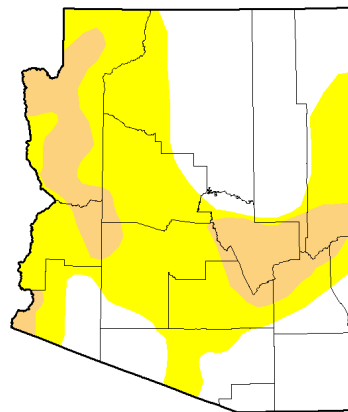
Drought Status Report

January 2016 Short-term Drought Status

Rain and snowfall due to a strong storm system that moved through the state from January 4th through the 10th brought short term drought relief to some parts of the state, although precipitation was not uniformly distributed. This has led to improvement in southern Gila County and across northern Arizona, primarily in Navajo, eastern Coconino and northern Apache counties. In some rangeland areas, precipitation filled stock ponds and saturated the soils, however, some areas in the north-western part of the state have been consistently missed by both rainfall and snowfall for quite some time.

We anticipate that the precipitation will continue over the next few months as El Niño remains strong. If the precipitation continues as expected through March, there will be more short-term drought improvement.

U.S. Drought Monitor Arizona



January 26, 2016
(Released Thursday, Jan. 28, 2016)
Valid 7 a.m. EST

	Drought Conditions (Percent Area)					
	None	D0-D4	D1-D4	D2-D4	D3-D4	D4
Current	42.94	57.06	15.94	0.00	0.00	0.00
Last Week	42.94	57.06	16.33	0.00	0.00	0.00
3 Months Ago	15.73	84.27	50.14	2.14	0.00	0.00
Start of Calendar Year	14.25	85.75	29.87	1.27	0.00	0.00
Start of Water Year	10.48	89.52	62.60	3.28	0.00	0.00
One Year Ago	0.00	100.00	82.64	38.19	2.77	0.00

Intensity:

- D0 Abnormally Dry
- D1 Moderate Drought
- D2 Severe Drought
- D3 Extreme Drought
- D4 Exceptional Drought

The Drought Monitor focuses on broad-scale conditions. Local conditions may vary. See accompanying text summary for forecast statements.

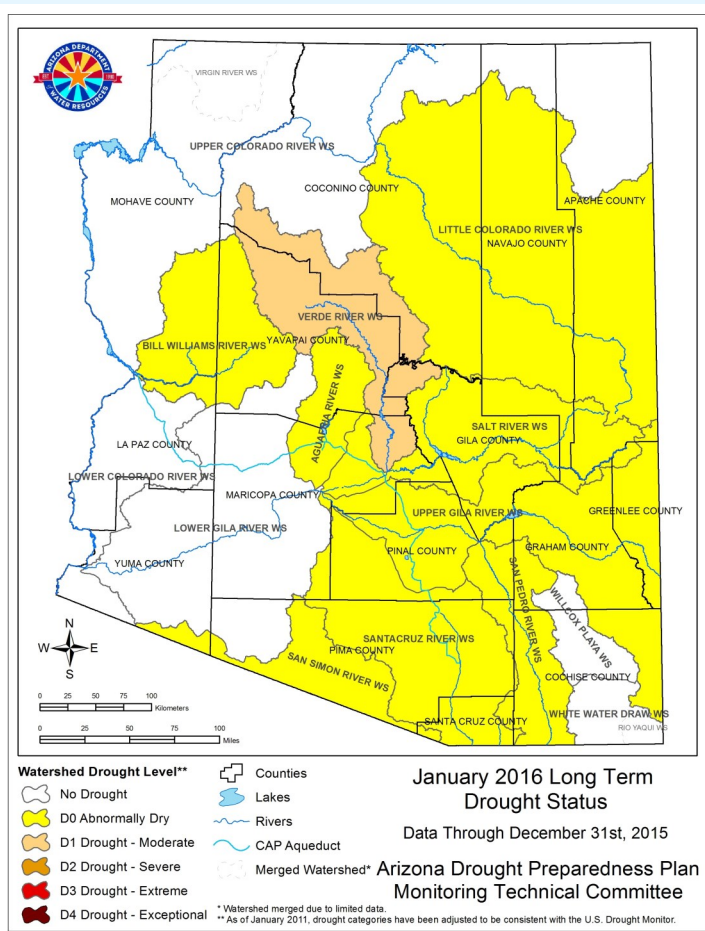
Author:
Mark Svoboda
National Drought Mitigation Center

<http://droughtmonitor.unl.edu/>

October–December 2015 Long-term Drought Status

Early winter precipitation occurred in some parts of the state, but has not resulted in sufficient accumulation to warrant long-term drought improvement. While streamflow is near normal in some areas, it is below average in many parts of the state, and snow pack is not sufficient to indicate improvement in water resources.

Aquifer recharge is slow across much of Arizona and groundwater resources will be reassessed in spring after the snow-melt has begun.



Summaries produced by the State Drought Monitoring Technical Committee, February 2, 2016.