

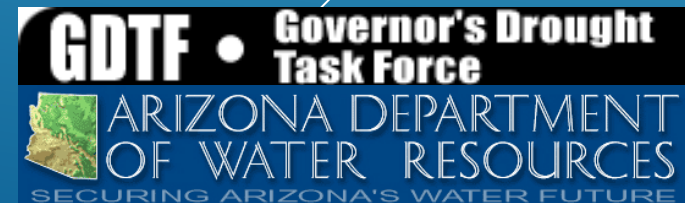
Drought Monitoring Technical Committee Update

to the

Arizona Interagency Coordinating Group

November 10, 2020

Nancy J. Selover
Arizona State Climate Office



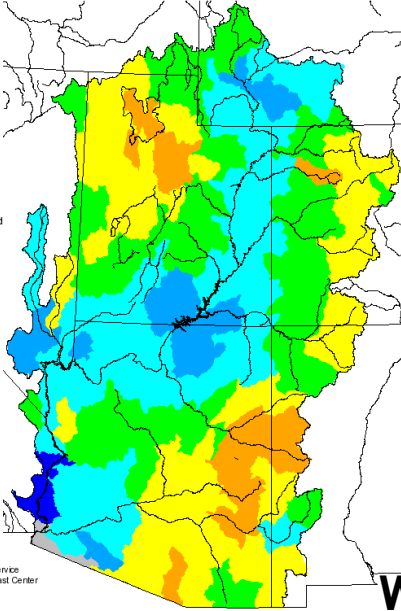
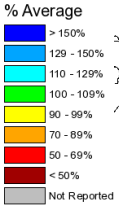
WY Precipitation Comparison Colorado River Basin

WY 2016

WY 2017

WY 2018

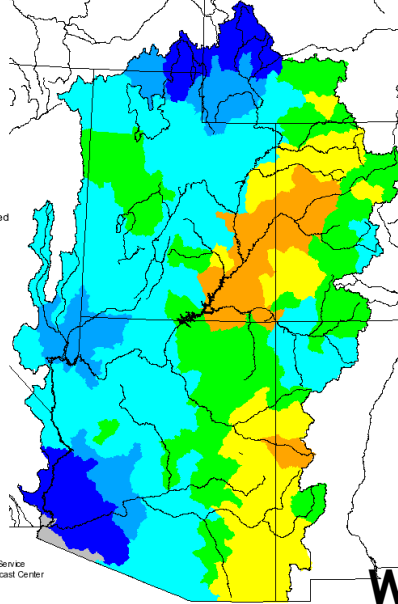
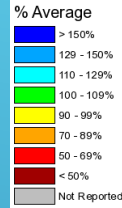
Seasonal Precipitation, October 2015 - September 2016
(Averaged by Hydrologic Unit)



Prepared by
NOAA, National Weather Service
Colorado Basin River Forecast Center
Salt Lake City, Utah
www.cbtrc.noaa.gov

WY 2019

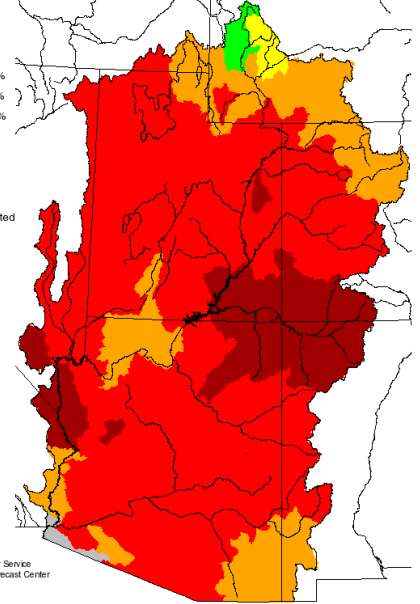
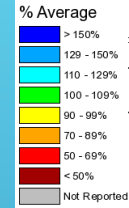
Seasonal Precipitation, October 2016 - September 2017
(Averaged by Hydrologic Unit)



Prepared by
NOAA, National Weather Service
Colorado Basin River Forecast Center
Salt Lake City, Utah
www.cbtrc.noaa.gov

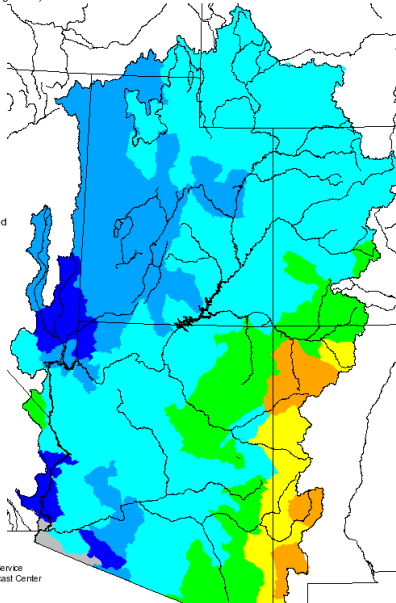
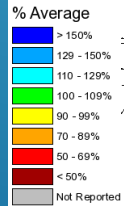
WY 2020

Seasonal Precipitation, October 2017 - September 2018
(Averaged by Hydrologic Unit)



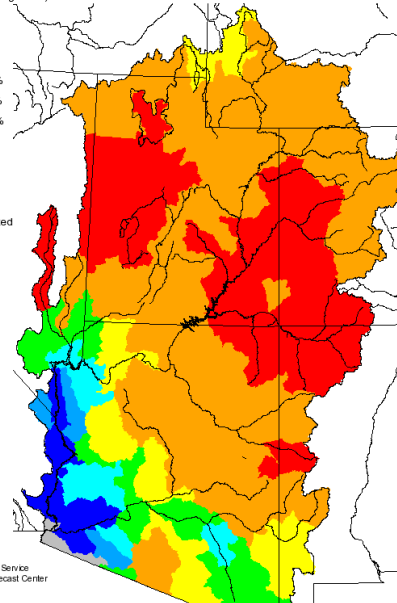
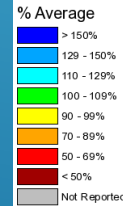
Prepared by
NOAA, National Weather Service
Colorado Basin River Forecast Center
Salt Lake City, Utah
www.cbtrc.noaa.gov

Seasonal Precipitation, October 2018 - September 2019
(Averaged by Hydrologic Unit)



Prepared by
NOAA, National Weather Service
Colorado Basin River Forecast Center
Salt Lake City, Utah
www.cbtrc.noaa.gov

Seasonal Precipitation, October 2019 - September 2020
(Averaged by Hydrologic Unit)

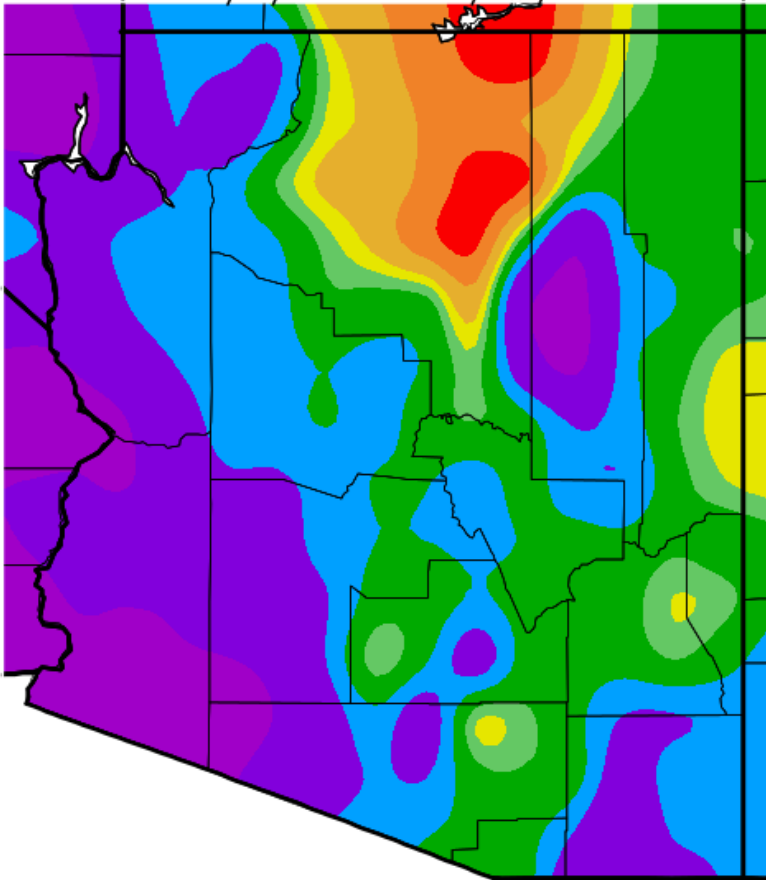


Prepared by
NOAA, National Weather Service
Colorado Basin River Forecast Center
Salt Lake City, Utah
www.cbtrc.noaa.gov

Water Year Precipitation Percent of Average

Oct-Apr 2020

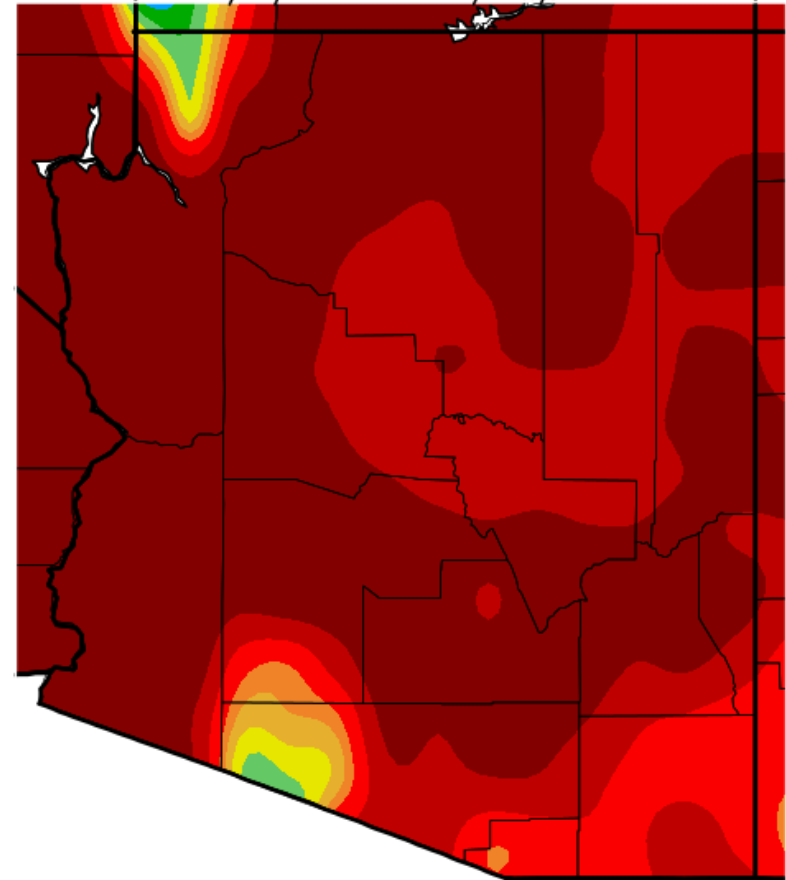
Percent of Average Precipitation (%)
10/1/2019 – 4/30/2020



Generated 5/ 1/2020 at WRCC using provisional data.
NOAA Regional Climate Centers

Jul-Sep 2020

Percent of Average Precipitation (%)
7/1/2020 – 9/30/2020

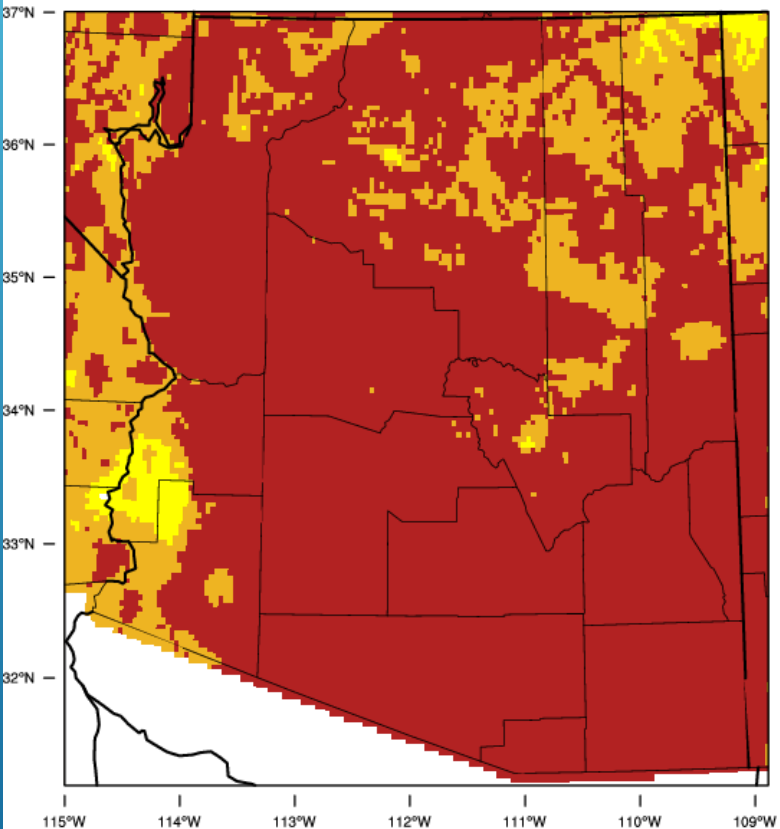


Generated 10/ 1/2020 at WRCC using provisional data.
NOAA Regional Climate Centers

Hottest and Driest Monsoon

Temperature

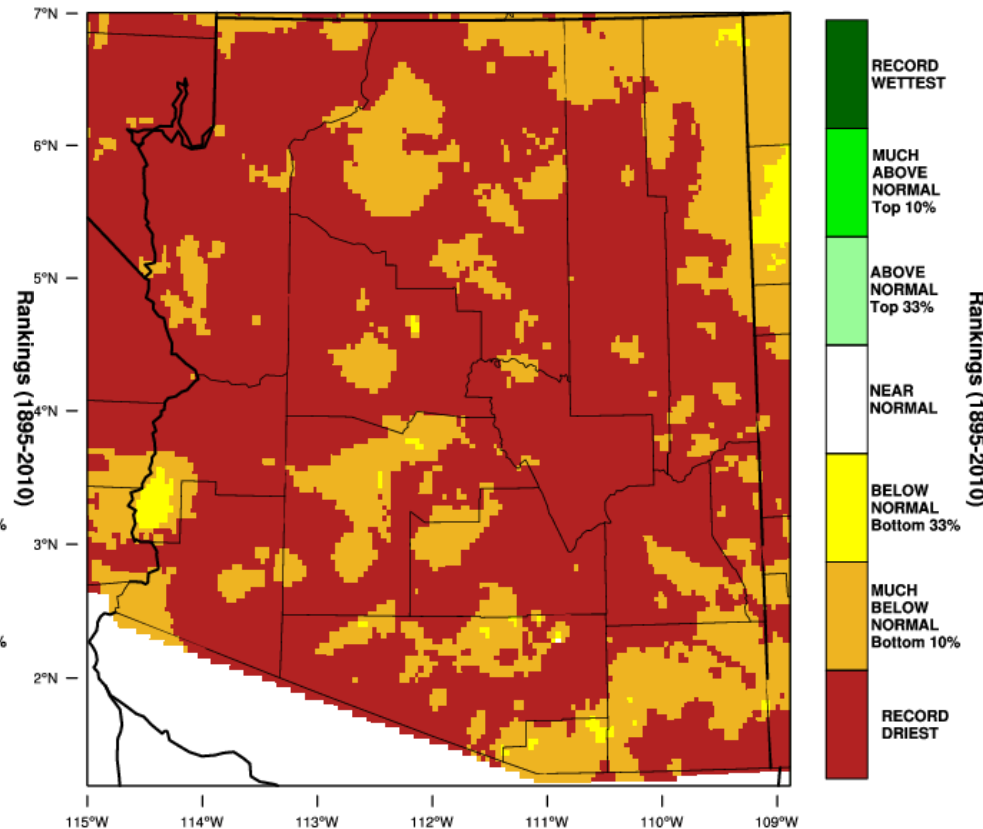
Arizona - Mean Temperature
July-September 2020 Percentile



WestWide Drought Tracker, U Idaho/WRCC Data Source: PRISM (Prelim), created 5 OCT 2020

Precipitation

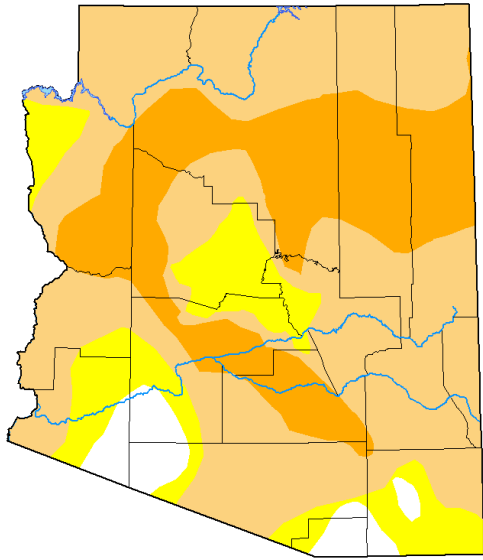
Arizona - Precipitation
July-September 2020 Percentile



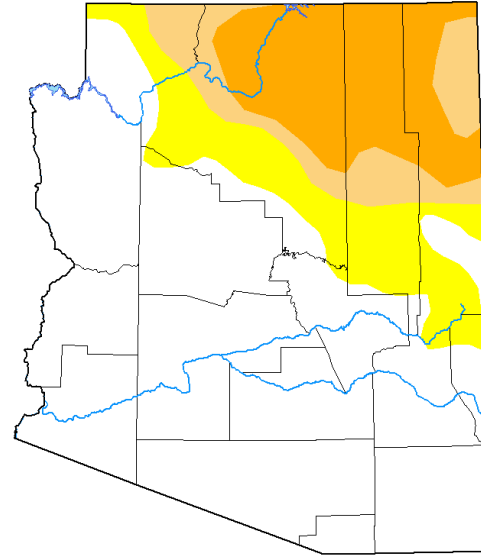
WestWide Drought Tracker, U Idaho/WRCC Data Source: PRISM (Prelim), created 5 OCT 2020

National Drought Monitor Comparison (Short-Term)

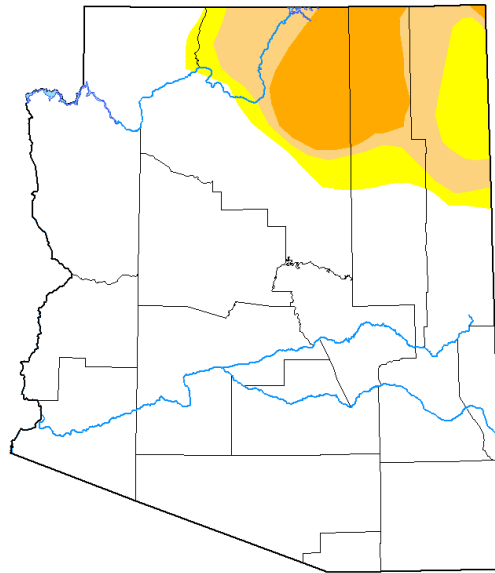
Oct 1, 2019



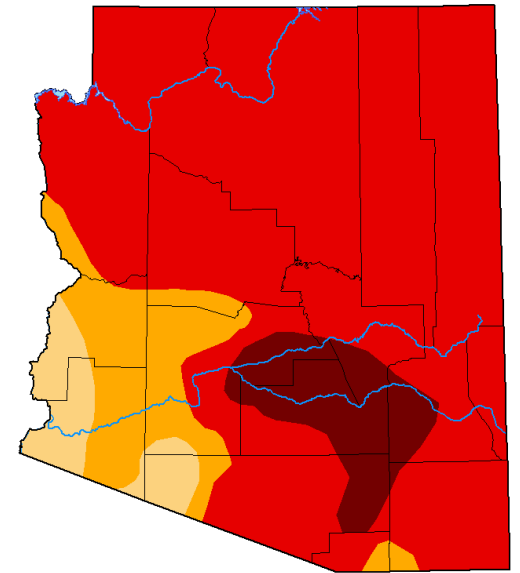
Feb 18, 2020



Apr 28, 2020

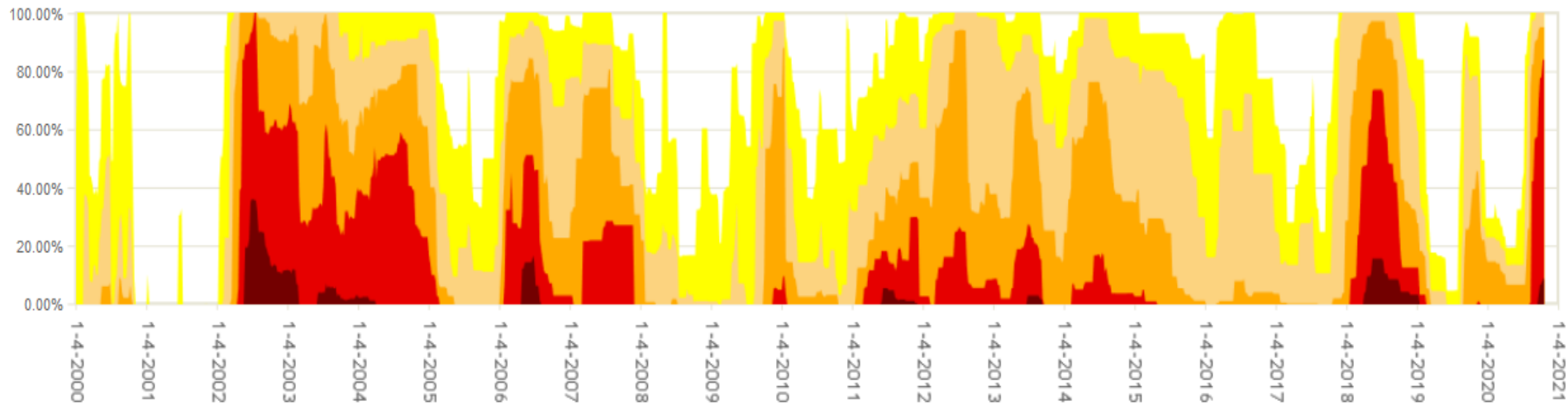


Nov 3, 2020



Drought in Arizona 2000-2020

Arizona Percent Area



Abnormally Dry
Moderate Drought
Severe Drought
Extreme Drought
Exceptional Drought

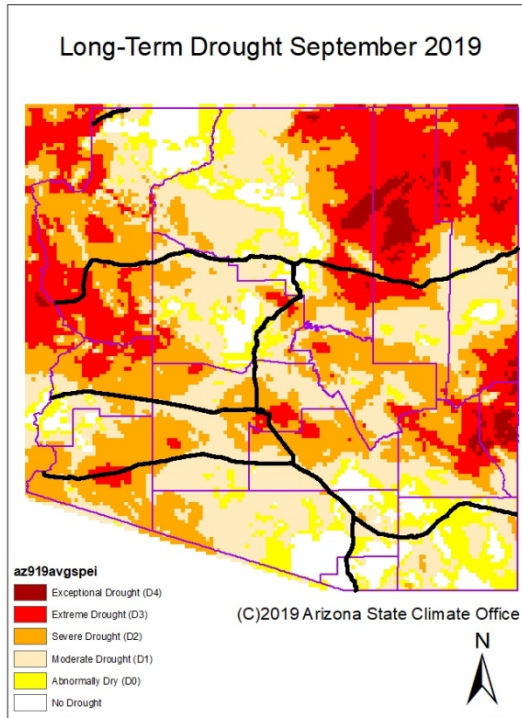
National Drought Monitor Comparison (Short-Term)

Percent of State in Drought

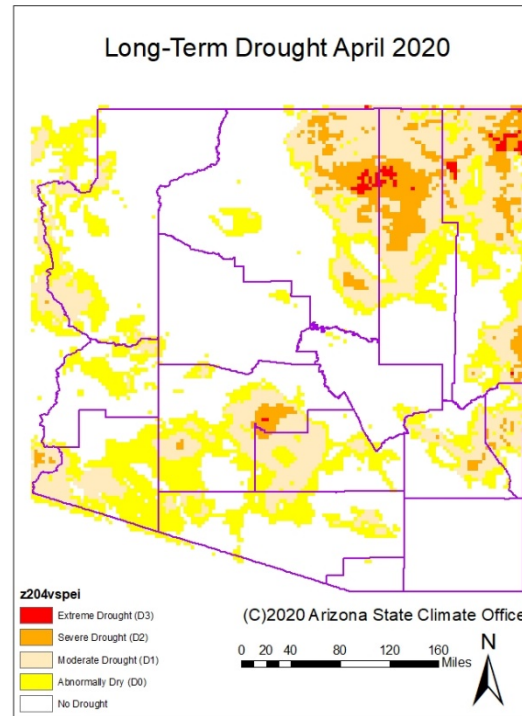
Category	Oct 1, 2019	Apr 30, 2020	Oct 1, 2020
No Drought	5%	81%	0%
Abnormally Dry	14%	6%	0%
Moderate Drought	55%	7%	6%
Severe Drought	26%	7%	24%
Extreme Drought	0%	0%	67%
Exceptional Drought	0%	0%	3%

Long Term Drought Status – Gridded

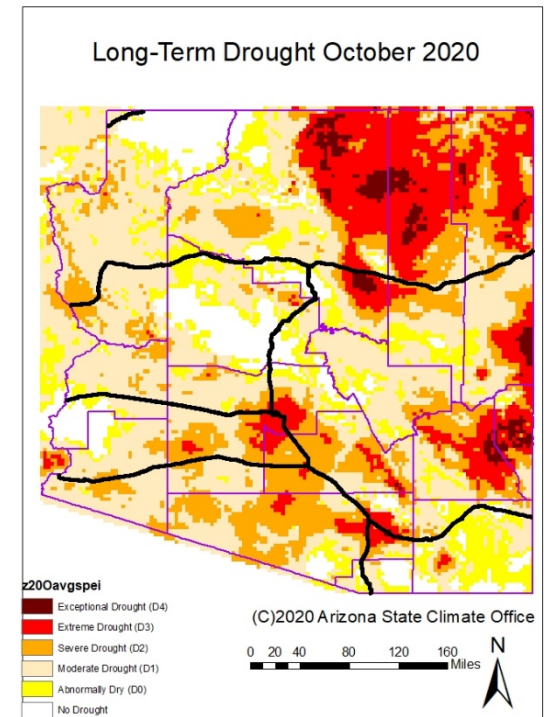
September 2019



April 2020



October 2019



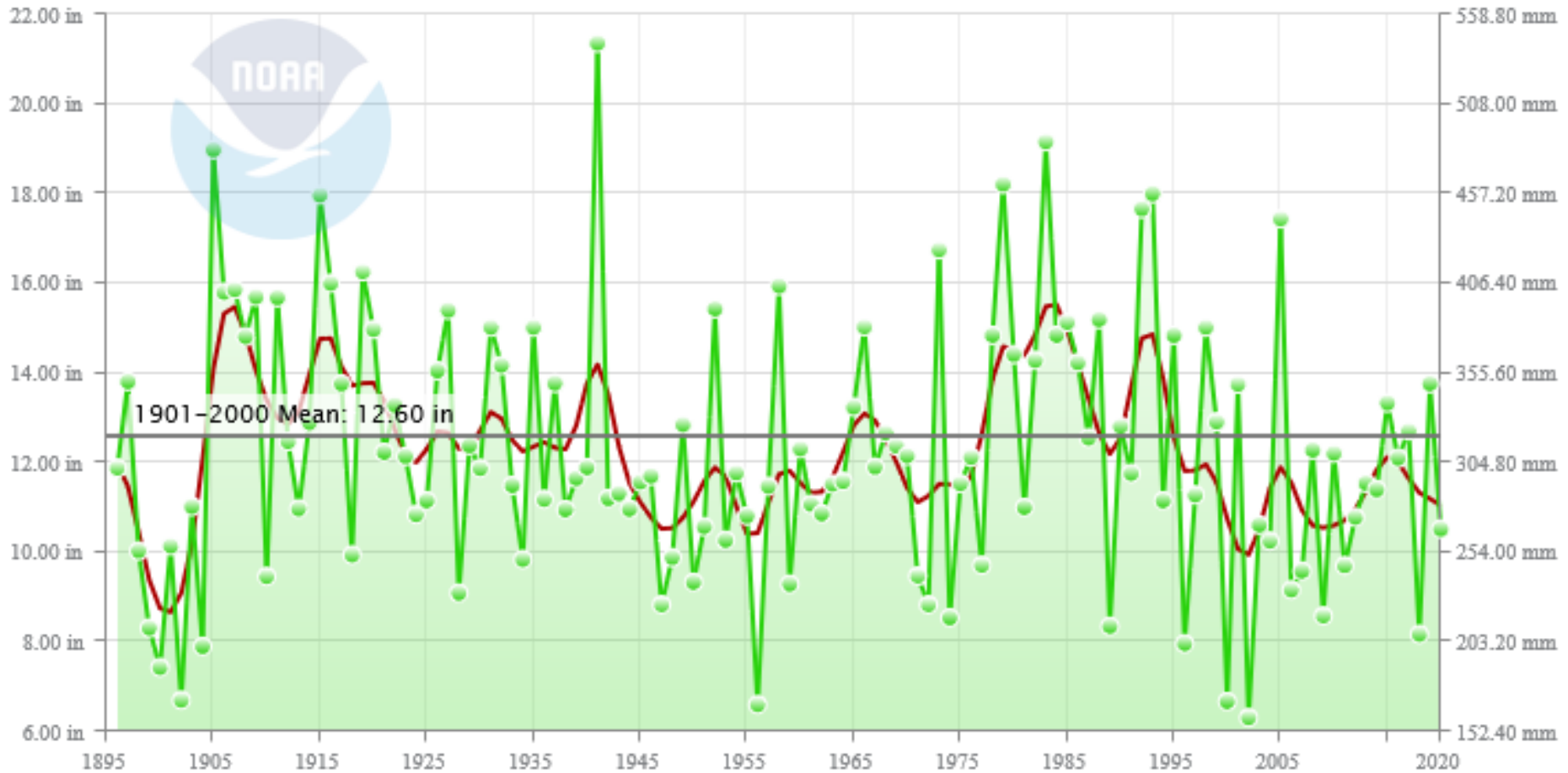
Based on average of 24-, 36-, and 48-month
SPI & SPEI

Long-Term WY Statewide Precipitation

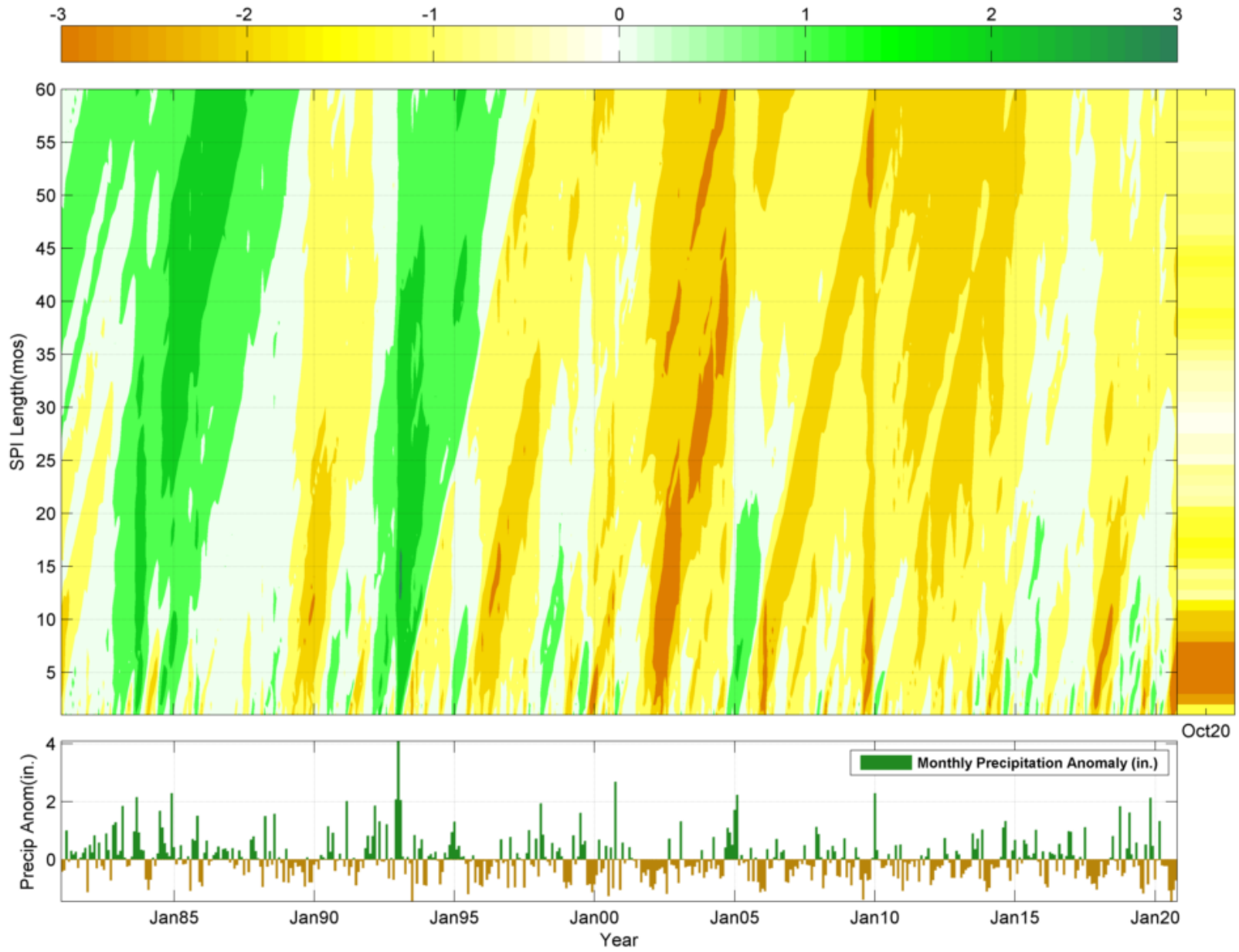
Arizona Precipitation

October–September

— Binomial Filter

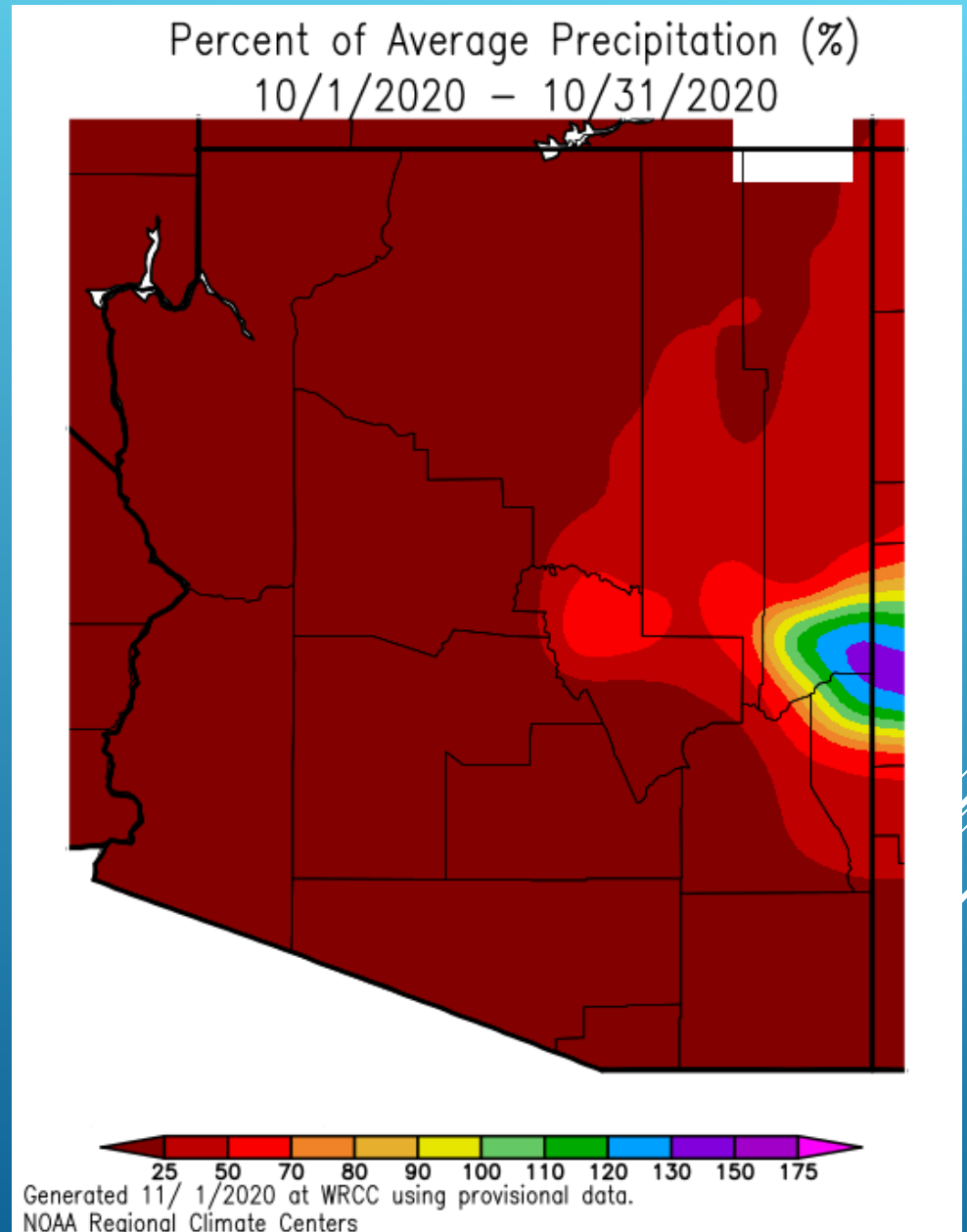


Arizona - Standardized Precipitation Index - (1-60 mos, Jan1981 - Oct2020)



Water Year Precipitation Percent of Average

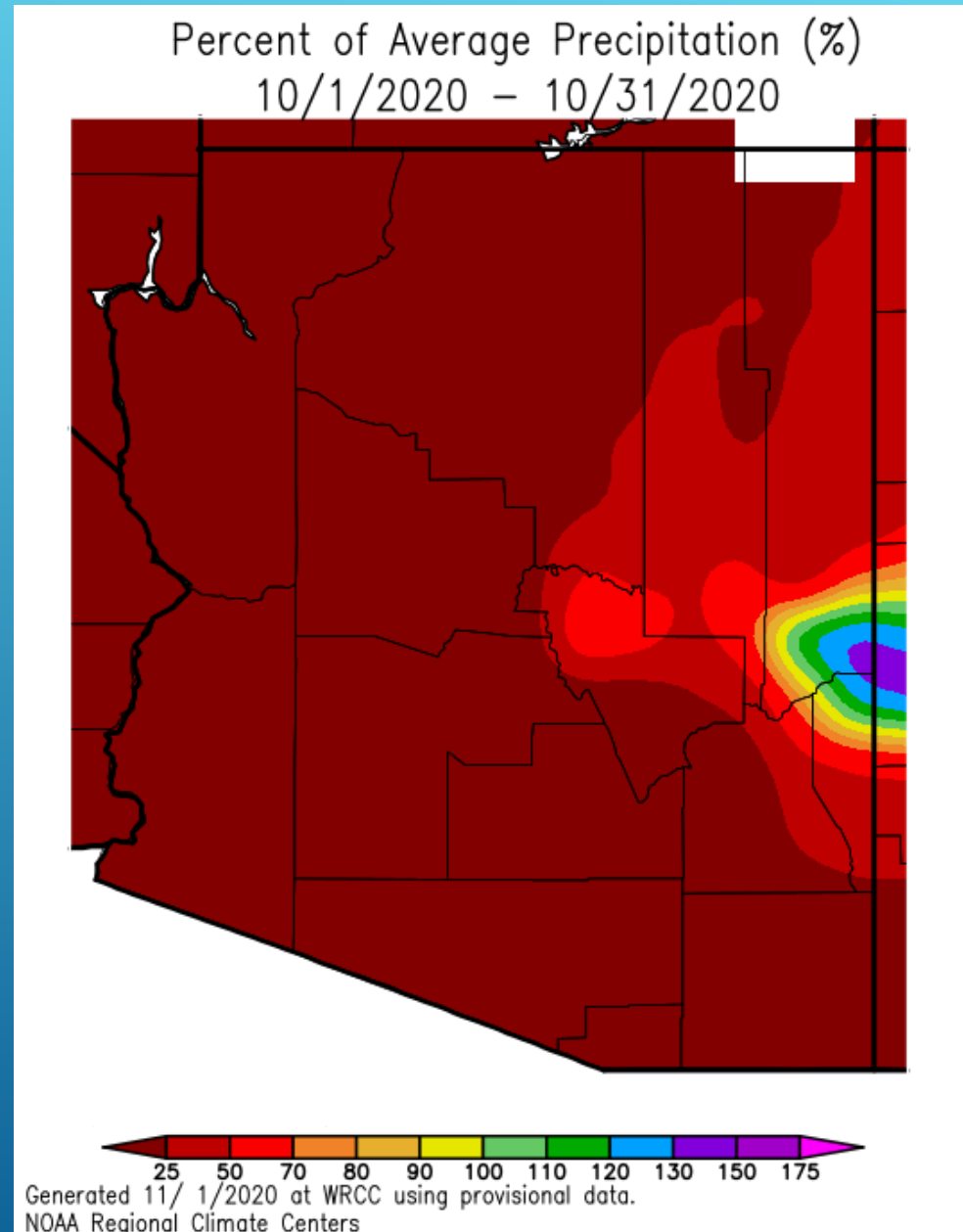
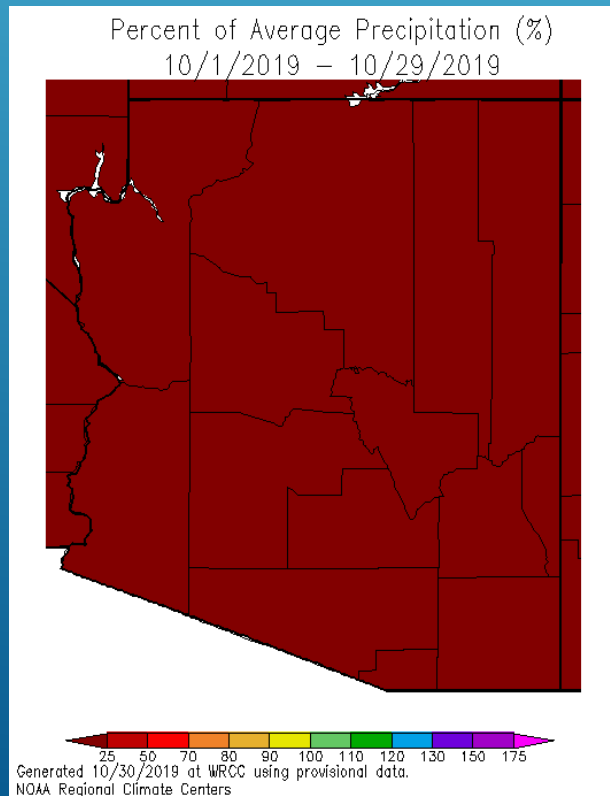
WY 2021 so far



Water Year Precipitation Percent of Average

WY 2021 so far

A Year Ago ...



Questions ?

Nancy J. Selover
Arizona State Climate Office
Arizona State University

480-965-0580
selover@asu.edu

<http://azclimate.asu.edu>

A decorative graphic consisting of several parallel white lines of varying lengths, slanted diagonally from the bottom right towards the top right, located in the lower right quadrant of the slide.