

Potential Water Storage Sites on Arizona State Trust Land

POTENTIAL SITES IDENTIFIED BY THE ARIZONA DEPARTMENT OF WATER RESOURCES AND THE ARIZONA STATE LAND DEPARTMENT, 2021



I. BACKGROUND

In 2016, the Arizona State Legislature passed [SB 1399](#), directing the State Land Commissioner and the Director of the Department of Water Resources to work together to develop a report that identifies potential water storage sites on State Trust land by December 31, 2017. Specifically, the legislation required the agencies to “[d]evelop a plan to create additional water storage in this state that includes a preliminary investigation of acceptable sites to construct new water storage facilities on State Trust land and the identification of the six most potentially acceptable sites.” In addition, the legislation stated that the potential water storage sites identified “may be water storage facilities on the earth’s surface or underground storage facilities as defined in section 45-802.01, Arizona Revised Statutes.”

Subsequent to the passage of SB 1399 and approval by the Governor on May 11, 2016, staff from the Arizona State Land Department (ASLD) and the Arizona Department of Water Resources (ADWR) began a series of meetings for the purpose of completing the required evaluation.

ADWR began the initial identification of potential storage sites, which were further refined and prioritized by ASLD. The initial site identification netted sites in nearly every groundwater basin and watershed in the State, including the Salt and Verde River system, Little Colorado River, Gila River, San Pedro River and the Santa Cruz River. More than 21 surface storage sites and 331 underground storage sites were initially identified by ADWR. To meet the criteria in the legislation, ASLD selected and prioritized six sites—four potential surface water dam/reservoir sites and two potential underground storage facility sites—for the final report. That report was issued in 2017.

This report, issued in response to [HB 2249 state lands; leases; renewal applications](#), enacted in 2021 (laws 2021, chapter 33), focuses specifically on underground storage sites and provides the full complement of potential underground storage sites originally identified in the preliminary analysis completed by ADWR in 2017. The analysis does not prioritize the potential sites or limit them.

II. POTENTIAL UNDERGROUND STORAGE SITES

A. METHODOLOGY

For this report and the report issued in 2017, the methodology was the same. Potential underground storage sites located along streams that cross State Land parcels that overlie basin-fill or local alluvial stream deposits were evaluated on a statewide basis. In some cases, factors such as proximity of potential sites to potential places of recovery and use and/or multiplicity of potential sites located on the same stream were used to eliminate isolated or potentially redundant sites. Sites located along canals, near the Colorado River, and in areas with many existing USF sites were also eliminated.

B. IDENTIFICATION OF POTENTIALLY ACCEPTABLE UNDERGROUND STORAGE SITES

ADWR identified 331 potential underground storage sites (Figure 1). ADWR made no prioritization of potential storage sites regarding locations within or outside Active Management Areas (AMAs) or Irrigation Non-Expansion Areas (INAs), as protections for such stored water is limited in either location. ADWR did not attempt to further refine the list of potential options or prioritize sites, recognizing that local stakeholders are far better positioned to evaluate the opportunities available to them. The full list of potential sites is detailed in Table 1.

III. CHALLENGES

1. Consistency with Arizona Enabling Act, Constitution, and Statutes

Any use of State Trust land for water storage purposes must be done consistent with Arizona laws requiring that the Trust be compensated adequately for that use, whether via a land sale (by auction), a short-term lease (< 10 years), or long-term lease (>10 years).

2. Ownership and Land Use

This study assumes that any potential facility identified in this preliminary study would be owned and operated by an entity that is not ADWR or ASLD. Neither ADWR nor ASLD is capable of owning, operating, or maintaining a water storage facility. Also, any existing land use or leases with ASLD which could impact underground storage activities should be considered.

3. Construction costs

It is likely that the cost of building any type of storage facility would be significant. ADWR is not engaged in the practice of constructing water storage projects and therefore is unable to accurately estimate the cost of building any of the potential facilities identified herein.

4. Surface Water Rights

Locating a surface water impoundment on or adjacent to an existing watercourse in Arizona is likely to encounter significant questions or conflict regarding the potential impacts to existing water rights or water right claims.

5. Access

This preliminary analysis did not include an examination of any access issues that might pertain to the identified potential sites, nor did it examine any potential surrounding landowner conflicts. In most instances, legal access would need to be obtained, roads built, power provided, etc.

6. Recovery

This preliminary analysis did not include an examination of how recovery of stored water might occur.

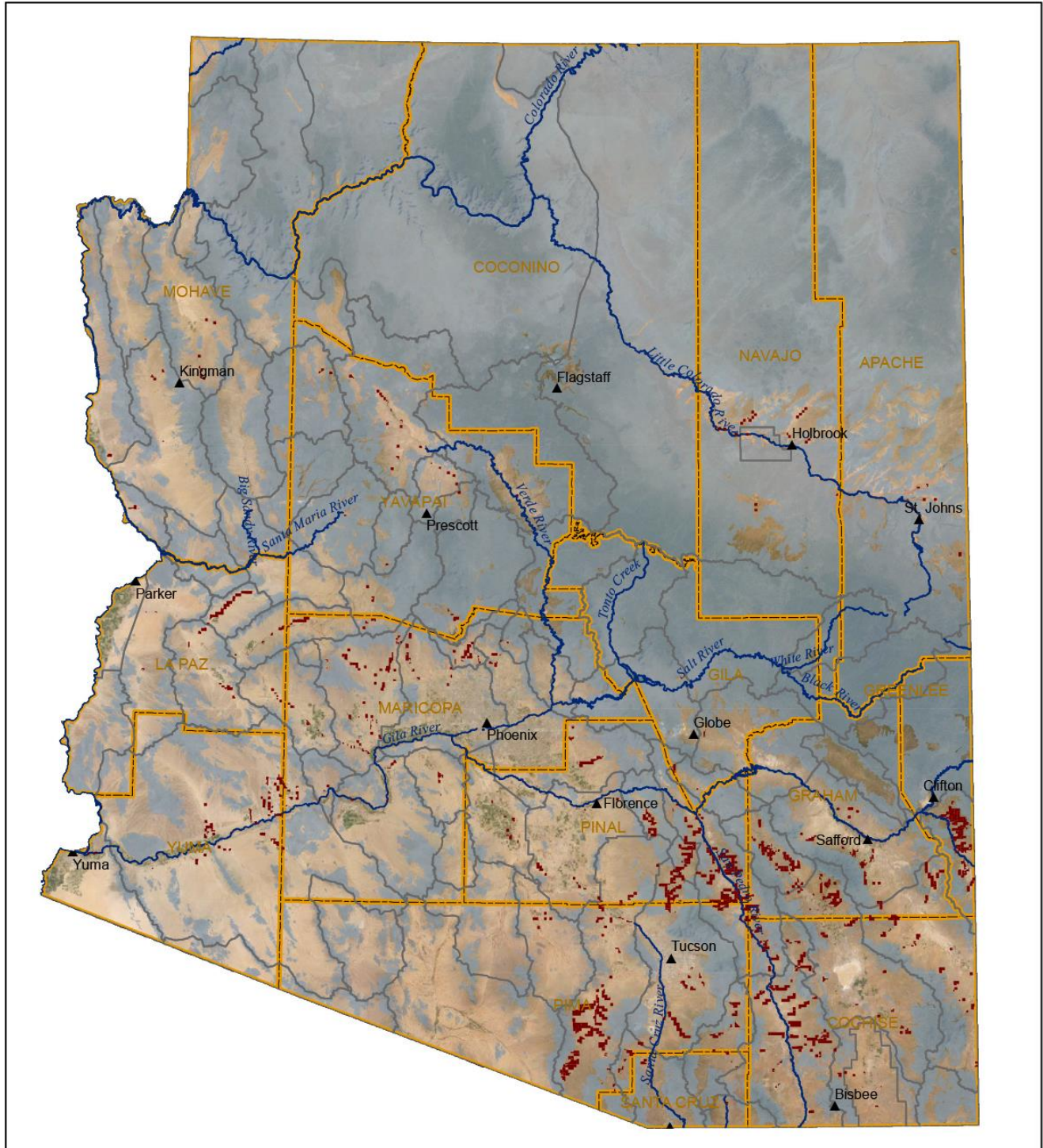
7. Federal and other permitting

Constructing, operating, and maintaining a water storage facility of any kind will require permits and approvals that are beyond the scope of this document.

IV. CONCLUSION

ADWR has provided this preliminary analysis of potential sites for water storage facilities, as required by laws 2021, chapter 33. As noted throughout, this analysis is a preliminary identification of potentially acceptable sites. It is not a recommendation or endorsement of any of the identified potentially acceptable sites, as there are numerous challenges that require further contemplation, many of which have yet to be identified, as well as engineering studies, environmental analyses, cultural resource analyses, and other examinations that will need to be carefully considered prior to moving forward.

Figure 1: Potential Underground Water Storage Sites



- ▲ City
- Potential Underground Water Storage Site
- Rivers
- Groundwater Subbasin
- ▭ County
- Hardrock

HB 2249 Potential Underground Water Storage Site Analysis

0 12.5 25 50 75 100 Miles



Created on: March 4, 2021
 Arizona Department of Water Resources
 Geographic Information System Unit
 1110 W. Washington St., Ste 310
 Phoenix, AZ 85007
 602-771-8500

Table 1: Potential Underground Water Storage Sites

ID	Name	Subbasin	County	Notes
3	Agua Fria River	Upper Agua Fria	Maricopa	
4	Aguirre Wash	Aguirre Valley	Pima	
5	Alambre Wash	Avra Valley	Pima	Altar Wash various
6	Alder Wash	Mammoth	Pima, Pinal	San Pedro - south of Manuel
8	Altar Wash	Avra Valley	Pima	Altar Wash various
11	Apache Canyon Stream	Cienega Creek	Pima	
12	Apache Creek	Duncan Valley	Greenlee	York
13	Apache Wash	East Salt River Valley	Maricopa	
14	Aravaipa Creek	Aravaipa Canyon	Graham	Aravapai
16	Aros Wash	Avra Valley	Pima	
17	Ash Creek	Gila Valley	Graham	
18	Ash Creek Canyon	Allen Flat	Cochise	
19	Ash Wash	Avra Valley	Pima	Altar Wash various
20	Asolido Wash	Avra Valley	Pima	
22	Babocomari River	Sierra Vista	Cochise, Santa Cruz	
23	Banner Wash	Avra Valley	Pima	Altar Wash various
24	Bar-X Wash	Willcox	Graham	Willcox North
25	Baragan Wash	Wellton-Mohawk	Yuma	
26	Batamote Wash	Santa Cruz AMA	Pima	
28	Bee Canyon Wash	Willcox	Cochise	
31	Big Bertha Wash	Camp Grant Wash	Pinal	
32	Big Chino Wash	Big Chino	Yavapai	
33	Big Creek	Willcox	Graham	Willcox North
34	Big O Wash	Donnelly Wash	Pinal	
36	Big Wash	Camp Grant Wash	Pima, Pinal	Big Wash - Oracle Junction
37	Bitter Creek	Duncan Valley	Greenlee	York
40	Blanco Wash	Avra Valley	Pima	Los Robles Wash near Marana
41	Bloodsucker Wash	Camp Grant Wash	Pinal	North of Oracle
43	Bogart Wash	Eloy	Pinal	
44	Bolas Blancas Wash	Avra Valley	Pima	
45	Bollen Wash	Mammoth	Graham, Pima	San Pedro - south of Manuel
47	Bouse Wash	La Posa Plains	La Paz	
48	Box Canyon Wash	Upper Santa Cruz	Pima	
49	Box O Wash	Donnelly Wash	Pinal	
50	Brawley Wash	Avra Valley	Pima	Altar Wash various

ID	Name	Subbasin	County	Notes
52	Brown Wash	Avra Valley	Pima	Altar Wash various
54	Buehman Canyon	Mammoth	Pima	San Pedro - south of Manuel
56	Bulldog Wash	East Salt River Valley	Pinal	
58	Burro Wash	Duncan Valley	Greenlee	Franklin
59	Cadillac Wash	Sierra Vista	Cochise	
61	California Wash	Sierra Vista	Cochise	
62	Cammerman Wash	San Carlos Valley	Gila	
63	Camp Grant Wash	Camp Grant Wash	Pinal	North of Oracle
64	Canada del Oro	Upper Santa Cruz	Pima, Pinal	
67	Cabbage Wash	Mammoth	Pinal	San Pedro - Mammoth
68	Carpas Wash	Upper Santa Cruz	Pinal	Big Wash - Oracle Junction
69	Carrizo Wash	Little Colorado River Plateau	Apache	
70	Catalina Wash	Mammoth	Pinal	San Pedro - south of Manuel
71	Cave Creek	San Simon Valley	Cochise, Maricopa	
72	Cedar Creek	Avra Valley	Pima	
73	Centennial Wash	McMullen Valley	LP_MARI	
75	Cerbat Wash	Sacramento Valley	Mohave	
76	Cerro Prieto Wash	Avra Valley	Pima	Altar Wash various
77	Chalk Creek	Upper Santa Cruz	Pima	
78	Champurrado Wash	Avra Valley	Pima	
79	Chiltepinas Wash	Avra Valley	Pima	Altar Wash various
80	China Wash	Eloy	Pinal	
81	Cienega Creek	Cienega Creek	Pima, Santa Cruz	
82	Clanton Wash	Wellton-Mohawk	Yuma	
83	Clark Wash	Mammoth	Pinal	San Pedro - Mammoth
84	Clifford Wash	Sierra Vista	Cochise	
85	Cocio Wash	Avra Valley	Pima	Los Robles Wash near Marana
86	Cold Creek	Duncan Valley	Greenlee	York
88	Columbus Wash	Wellton-Mohawk	Maricopa, Yuma	
89	Connelly Wash	Donnelly Wash	Pinal	
91	Contreras Wash	Avra Valley	Pima	Altar Wash various
93	Copper Creek	Mammoth	Pinal	San Pedro - Mammoth
94	Copper Wash	Wellton-Mohawk	Maricopa	
95	Cottonwood Creek	Duncan Valley	Graham, Yavapai	York
97	Cottonwood Wash	Donnelly Wash	Navajo, Pinal	San Pedro - Mammoth
100	Coyote Spring	Little Chino	Yavapai	
101	Coyote Wash	Duncan Valley	Graham, Yavapai	Franklin

ID	Name	Subbasin	County	Notes
102	Crazy Horse Wash	Aravaipa Canyon	Graham	Willcox North
104	Cronley Wash	Mammoth	Pinal	San Pedro - Mammoth
106	Cruz Wash	Upper Santa Cruz	Pinal	Big Wash - Oracle Junction
107	Cuadro Wash	Avra Valley	Pima	
109	Cunningham Wash	Butler Valley	La Paz	Butler Valley
110	Daggs Wash	Hassayampa	Maricopa	
113	Dead Horse Wash	Hassayampa	Maricopa	
114	Deadman Wash	Lake Pleasant	Maricopa, Yuma	
115	Deer Creek	Aravaipa Canyon	Cochise, Graham	Willcox North
116	Delaney Wash	Hassayampa	Maricopa	
118	Diablo Wash	Santa Cruz AMA	Santa Cruz	
119	Dial Wash	San Simon Valley	Graham, Cochise	
120	Dickey Wash	Hassayampa	Maricopa	
121	Dodson Wash	Camp Grant Wash	Pinal	
122	Donnelly Wash	Donnelly Wash	Pinal	
123	Dragoon Wash	Willcox	Cochise	
125	Drew Wash	Camp Grant Wash	Pinal	North of Oracle
126	Dripping Spring Wash	Dripping Springs Wash	Gila	Only the lower two polygons
127	Dromedary Creek	Duncan Valley	Greenlee	
128	Dry Camp Canyon Stream	Mammoth	Pinal	San Pedro - Mammoth
129	Dry Wash	Agua Fria	Yavapai	
131	East Turkey Creek	San Simon Valley	Cochise	
132	East Whitetail Creek	San Simon Valley	Cochise	
134	El Tiro Wash	Aguirre Valley	Pima	
136	Esperanza Wash	Upper Santa Cruz	Pima	
137	Falls Springs Wash	Lake Havasu	Mohave	
138	Faraway Wash	Upper Santa Cruz	Pinal	Big Wash - Oracle Junction
139	Farmers Canal	Wellton-Mohawk	Yuma	
140	Fivemile Creek	Willcox	Cochise	
141	Fivemile Wash	Lake Mohave	Mohave	
144	Fortynine Wash	Cienega Creek	Pima	
145	Fourmile Creek	Aravaipa Canyon	Graham	Willcox North
146	Fourmile Wash	Hassayampa	Maricopa	
147	Fourth of July Wash	Dendora Valley	Maricopa	
148	Fraquita Wash	Avra Valley	Pima	
149	Frees Wash	Hualapai Valley	Mohave	
150	Fresnal Wash	Aravaipa Canyon	Graham, Pima	Willcox North

ID	Name	Subbasin	County	Notes
151	Fresno Wash	Avra Valley	Pima	Altar Wash various
152	Frye Creek	Gila Valley	Graham	
153	Gadwell Canyon	Douglas	Cochise	
154	Gardner Canyon Stream	Cienega Creek	Pima, Santa Cruz	
155	Gardner Creek	Aravaipa Canyon	Graham	Willcox North
158	Gila River	Dendora Valley	Yuma, Maricopa, Pinal, Graham, Greenlee	York
159	Gold Gulch	San Simon Valley	Graham, Cochise	
160	Goudy Canyon Wash	Willcox	Graham	Willcox North
161	Grandpa Wash	Verde Valley	Yavapai	
162	Granite Creek	Little Chino	Yavapai	
163	Grant Creek	Willcox	Graham	Willcox North
164	Grapevine Canyon Wash	Willcox	Graham	Willcox North
166	Gravel Wash	Wellton-Mohawk	Yuma	
167	Greaser Wash	Duncan Valley	Greenlee	York
169	Greene Wash	Eloy	Pinal	
170	Guild Wash	Avra Valley	Pima, Pinal	
172	Gust James Wash	Mammoth	Pinal	San Pedro - Mammoth
173	Haberstock Wash	Sierra Vista	Cochise	
175	Happy Camp Wash	San Simon Valley	Cochise	
177	Harris Wash	Duncan Valley	Greenlee	Sheldon
179	Hartman Wash	Upper Hassayampa	Maricopa	Furthest east only at confluence of Sols and Hartman
180	Hassayampa River	Hassayampa	Maricopa	
181	Hay Hollow Draw	Little Colorado River Plateau	Navajo	
183	Henderson Wash	Sierra Vista	Cochise	
184	High Creek	Willcox	Graham	Willcox North
185	Hitt Wash	Big Chino	Yavapai	
186	Hog Canyon Wash	Willcox	Graham	Willcox North
187	Hoodoo Wash	Wellton-Mohawk	Yuma	
188	Horse Foot Wash	Camp Grant Wash	Pinal	North of Oracle
189	Horse Wash	Big Chino	Yavapai	
190	Hot Springs Canyon	Allen Flat	Cochise	
191	Hot Springs Wash	Gila Valley	Graham	
192	Hot Well Draw	San Simon Valley	Graham	Franklin
193	Humbug Creek	Agua Fria	Yavapai	
194	Humpy Wash	Little Colorado River Plateau	Navajo	
195	Indian Camp Wash	Mammoth	Pinal	
196	Jackrabbit Wash	Hassayampa	Maricopa	

ID	Name	Subbasin	County	Notes
197	Jacobson Creek	Gila Valley	Graham	
198	Jarvis Wash	Little Colorado River Plateau	Apache	
199	Jesus Canyon Wash	Willcox	Graham	Willcox North
200	Jimmie Wash	Hassayampa	Maricopa	
201	Joseph City Wash	Joseph City	Navajo	
202	Julian Wash	Upper Santa Cruz	Pima	
204	Kaywood Wash	Duncan Valley	Greenlee	York
205	Kennedy Falls Wash	Aravaipa Canyon	Graham	Willcox North
206	Kirkland Creek	Santa Maria	Yavapai	
208	Las Guijas Wash	Avra Valley	Pima	
209	Las Moras Wash	Avra Valley	Pima	
210	Left Branch Long Hollow	Aravaipa Canyon	Graham	Willcox North
212	Legunita Wash	Avra Valley	Pima	
213	Leroux Wash	Little Colorado River Plateau	Navajo	Just the parcels near Holbrook
214	Leslie Creek	Douglas	Cochise	
216	Linden Creek	Duncan Valley	Greenlee	York
217	Little Chino Wash	Little Chino	Yavapai	
218	Little Colorado River	Little Colorado River Plateau	Apache, Navajo	
219	Little Gust James Wash	Mammoth	Pinal	San Pedro - Mammoth
220	Little San Domingo Wash	Hassayampa	Maricopa	
221	Little Sand Wash	Duncan Valley	Greenlee	Sheldon
222	Little Thomas Wash	Avra Valley	Pima	
223	Long Hollow	Aravaipa Canyon	Graham	Willcox North
224	Lop Ear Creek	Duncan Valley	Greenlee	
226	Los Encinos Wash	Avra Valley	Pima	
227	Los Robles Wash	Avra Valley	Pima, Pinal	Los Robles Wash near Marana
228	Loudermilk Wash	Dendora Valley	Maricopa	
229	Low Creek	Aravaipa Canyon	Graham	Willcox North
230	Luke Wash	Hassayampa	Maricopa	
232	Mammoth Wash	Aguirre Valley	Pima, Pinal	San Pedro - Mammoth
233	Marijilda Wash	Gila Valley	Graham	
234	Markham Wash	Gila Valley	Graham, Yavapai	
235	Martin Canyon	Little Chino	Yavapai	
236	Martin Wash	Willcox	Graham	Willcox North
237	Martinez Wash	Upper Hassayampa	Yavapai	Primarily the furthest north by Congress
239	Mendoza Wash	Avra Valley	Pima	Altar Wash various
240	Mescal Arroyo	Cienega Creek	Pima	

ID	Name	Subbasin	County	Notes
241	Mescal Creek	Sierra Vista	Cochise	
243	Middle Canyon Wash	Sierra Vista	Cochise	
249	Mohawk Wash	Wellton-Mohawk	Yuma	
252	Mud Springs Wash	Willcox	Graham	Willcox North
253	Mud Tank Wash	Big Chino	Yavapai	
255	Mulberry Wash	Mammoth	Pinal	San Pedro - Mammoth
256	New River	Lake Pleasant	Maricopa	
258	North Fork Airport Wash	Upper Santa Cruz	Pima	
260	Nottbusch Wash	Wellton-Mohawk	Maricopa, Yuma	
261	Oak Creek	Aravaipa Canyon	Graham	Willcox North
262	Oak Draw	Gila Valley	Graham	
263	Old Julian Wash	Upper Santa Cruz	Pima	
264	Old Junction Wash	Upper Santa Cruz	Pima	
265	Oro Blanco Wash	Avra Valley	Pima	
267	Owl Creek	San Simon Valley	Cochise	
268	Owl Wash	Gila Valley	Graham, Yuma	
269	Ox Wash	Hassayampa	Maricopa	
270	Pacheco Wash	Sierra Vista	Cochise	
271	Paddys River	Aravaipa Canyon	Graham	Willcox North
272	Palmer Wash	Camp Grant Wash	Pinal	
273	Palomas Wash	Mammoth	Cochise	
274	Pantano Wash	Upper Santa Cruz	Pima	
275	Papalote Wash	Santa Cruz AMA	Pima	
276	Partridge Creek	Big Chino	Yavapai	
278	Peck Wash	Gila Valley	Graham	
279	Penitas Wash	Avra Valley	Pima	
280	Peppersauce Wash	Mammoth	Pinal	San Pedro - south of Manuel
281	Peters Wash	Mammoth	Graham, Pinal	San Pedro - south of Manuel
282	Phillips Wash	Hassayampa	Maricopa	
283	Phoenix Park Wash	Little Colorado River Plateau	Navajo	
285	Pine Creek	Big Chino	Yavapai	
286	Piper Springs Wash	Mammoth	Pinal	
287	Pitchfork Canyon Wash	Willcox	Graham	
288	Placeritos Wash	Avra Valley	Pima	
289	Pool Wash	Mammoth	Cochise	
290	Powerline Wash	Hassayampa	Maricopa	
291	Pridham Creek	Willcox	Cochise	

ID	Name	Subbasin	County	Notes
292	Puerco River	Little Colorado River Plateau	Navajo	
293	Putnam Wash	Camp Grant Wash	Pinal	
295	Queen Creek	East Salt River Valley	Pinal	
297	Rainbow Wash	Gila Bend	Maricopa	
298	Rainbows End Wash	Upper Santa Cruz	Pinal	Big Wash - Oracle Junction
299	Rainville Wash	Duncan Valley	Greenlee	Franklin
300	Ramboz Wash	San Carlos Valley	Gila	
301	Rattlesnake Creek	Aravaipa Canyon	Graham	Willcox North
302	Ray Spring Wash	Mammoth	Pinal	San Pedro - south of Manuel
303	Redfield Canyon	Mammoth	Graham, Cochise, Pima	San Pedro - south of Manuel
304	Redrock Creek	Mammoth	Cochise	
305	Reeves Creek	Sierra Vista	Cochise	
306	Ridge	Willcox	Cochise	
307	Right Branch Long Hollow	Aravaipa Canyon	Graham	Willcox North
308	Roach Wash	Mammoth	Pinal	
309	Rodger Creek	Carefree	Maricopa	
310	Romero Wash	Mammoth	Pinal	
312	Sabino Wash	Avra Valley	Pima	Altar Wash various
313	Sacaton Wash	Willcox	Cochise	
315	Sahuarita Wash	Upper Santa Cruz	Pima	Big Wash - Oracle Junction
316	Saint David Ditch	Sierra Vista	Cochise	
317	Salome Wash	McMullen Valley	La Paz	
319	San Cristobal Wash	Wellton-Mohawk	Yuma	
320	San Juan Wash	Avra Valley	Pima	
321	San Pedro River	Sierra Vista	Cochise, Pinal	San Pedro - south of Manuel
322	San Simon River	San Simon Valley	Cochise	
323	Sand Wash	Duncan Valley	Graham, Greenlee	Sheldon
324	Sanders Wash	Duncan Valley	Greenlee	Sheldon
325	Sandia Wash	Duncan Valley	Greenlee	Sheldon
326	Santa Cruz River	Eloy	Pima, Pinal, Santa Cruz	
327	Santa Cruz Wash	Maricopa-Stanfield	Pinal	
328	Santa Margarita Wash	Avra Valley	Pima	
329	Santa Rosa Wash	Maricopa-Stanfield	Pinal	
331	Saucito Wash	Avra Valley	Pima	
332	Scanlon Wash	Mammoth	Pinal	San Pedro - Mammoth
333	Scott Wash	Little Colorado River Plateau	Navajo	
334	Sheep Camp Wash	Mammoth	Graham	San Pedro - south of Manuel

ID	Name	Subbasin	County	Notes
335	Sheep Wash	Aravaipa Canyon	Cochise, Graham	Willcox North
337	Skully Creek	Duncan Valley	Greenlee	York
339	Skunk Creek	Lake Pleasant	Maricopa	
340	Slavin Wash	Sierra Vista	Cochise	
341	Smelter Wash	Mammoth	Pinal	San Pedro - Mammoth
342	Soldier Creek	Sierra Vista	Cochise	
345	Sopori Wash	Santa Cruz AMA	Pima, Santa Cruz	
346	Soto Wash	Avra Valley	Pima	
349	South Fork Airport Wash	Upper Santa Cruz	Pima	
351	South Mendoza Wash	Avra Valley	Pima	
353	South Taylor Wash	Willcox	Graham	Willcox North
354	Soza Wash	Mammoth	Cochise	San Pedro - south of Manuel
355	Spring Creek	Sierra Vista	Cochise	Hereford area
356	Squaw Creek	Aravaipa Canyon	Graham	Willcox North
357	Stanford Creek	Willcox	Cochise	
358	Star Wash	Hassayampa	Maricopa	
359	Stevens Wash	Avra Valley	Pima	
360	Stockton Wash	Gila Valley	Graham	
362	Stove Wash	Duncan Valley	Greenlee	York
363	Stratton Wash	Mammoth	Pima, Pinal	San Pedro - south of Manuel
364	Swingle Wash	Mammoth	Pinal	
365	Tar Wash	Mammoth	Pinal	San Pedro - Mammoth
366	Telegraph Wash	Gila Valley	Graham	
369	Tenmile Wash	Wellton-Mohawk	Maricopa, Yuma	
370	Teran Wash	Mammoth	Cochise	
371	Thirteenmile Wash	Sacramento Valley	Mohave	
372	Thomas Canyon Wash	Avra Valley	Pima	
373	Threeway Wash	Upper Santa Cruz	Pinal	Big Wash - Oracle Junction
375	Tipperary Wash	Avra Valley	Pinal	
378	Tres Alamos Wash	Willcox	Cochise	
379	Trilby Wash	West Salt River Valley	Maricopa	
380	Truxton Wash	Hualapai Valley	Mohave	
381	Tucson Wash	Camp Grant Wash	Pinal	San Pedro - Mammoth
382	Tule Creek	Agua Fria	Yavapai	
383	Turkey Creek	Aravaipa Canyon	Cochise, Graham, Santa Cruz	Willcox North
384	Twentynine Wash	Upper Santa Cruz	Pinal	Big Wash - Oracle Junction
385	Twentyseven Wash	Upper Santa Cruz	Pinal	Big Wash - Oracle Junction

ID	Name	Subbasin	County	Notes
386	Two E Wash	Aravaipa Canyon	Graham	Willcox North
387	Tyson Wash	La Posa Plains	La Paz	
388	Underwood Wash	Gila Valley	Graham	Underwood Wash
389	Upper Bouse Wash	Ranegras Plain	La Paz	
395	WA Wash	Gila Valley	Graham	
396	Wagner Wash	Hassayampa	Maricopa	
398	Walnut Creek	Big Chino	Yavapai	
399	Walnut Gulch	Sierra Vista	Cochise	
400	Walnut Wash	Willcox	Cochise	
401	Wampoo Wash	Duncan Valley	Greenlee	York
403	Waterman Wash	Rainbow Valley	Maricopa	
404	Waters Wash	Duncan Valley	Greenlee	York
405	Weekes Wash	East Salt River Valley	Pinal	
406	Well Canyon Stream	Mammoth	Pinal	San Pedro - Mammoth
409	West Prong Waterman Wash	Rainbow Valley	Maricopa	
412	Whitefield Wash	Duncan Valley	Greenlee	Franklin
413	Whitewater Draw	Douglas	Cochise	
414	Whitlock Wash	Gila Valley	Graham	
416	Williamson Valley Wash	Big Chino	Yavapai	
417	Willow Creek	Duncan Valley	Graham, Mohave	York
418	Willow Spring Wash	Gila Valley	Graham	
419	Willow Springs Wash	Carefree	Maricopa	
420	Willow Wash	Sierra Vista	Cochise	
421	Winters Wash	Hassayampa	Maricopa	
422	Wood Canyon Stream	San Simon Valley	Cochise	
423	Wood Canyon Wash	Willcox	Cochise	
424	Yaqui Wash	Wellton-Mohawk	Yuma	
425	Zapata Wash	Mammoth	Pinal	San Pedro - Mammoth
426	Zuni River	Little Colorado River Plateau	Apache	
427	Turkey Creek 2	Willcox	Cochise	
428	unnamed			San Pedro - south of Manuel
429	unnamed			San Pedro - south of Manuel
430	unnamed	Sierra Vista	Cochise	Sierra Vista area
431	unnamed	Sierra Vista	Cochise	Sierra Vista area
432	unnamed	Sierra Vista	Cochise	Sierra Vista area
433	unnamed			
434	unnamed			

