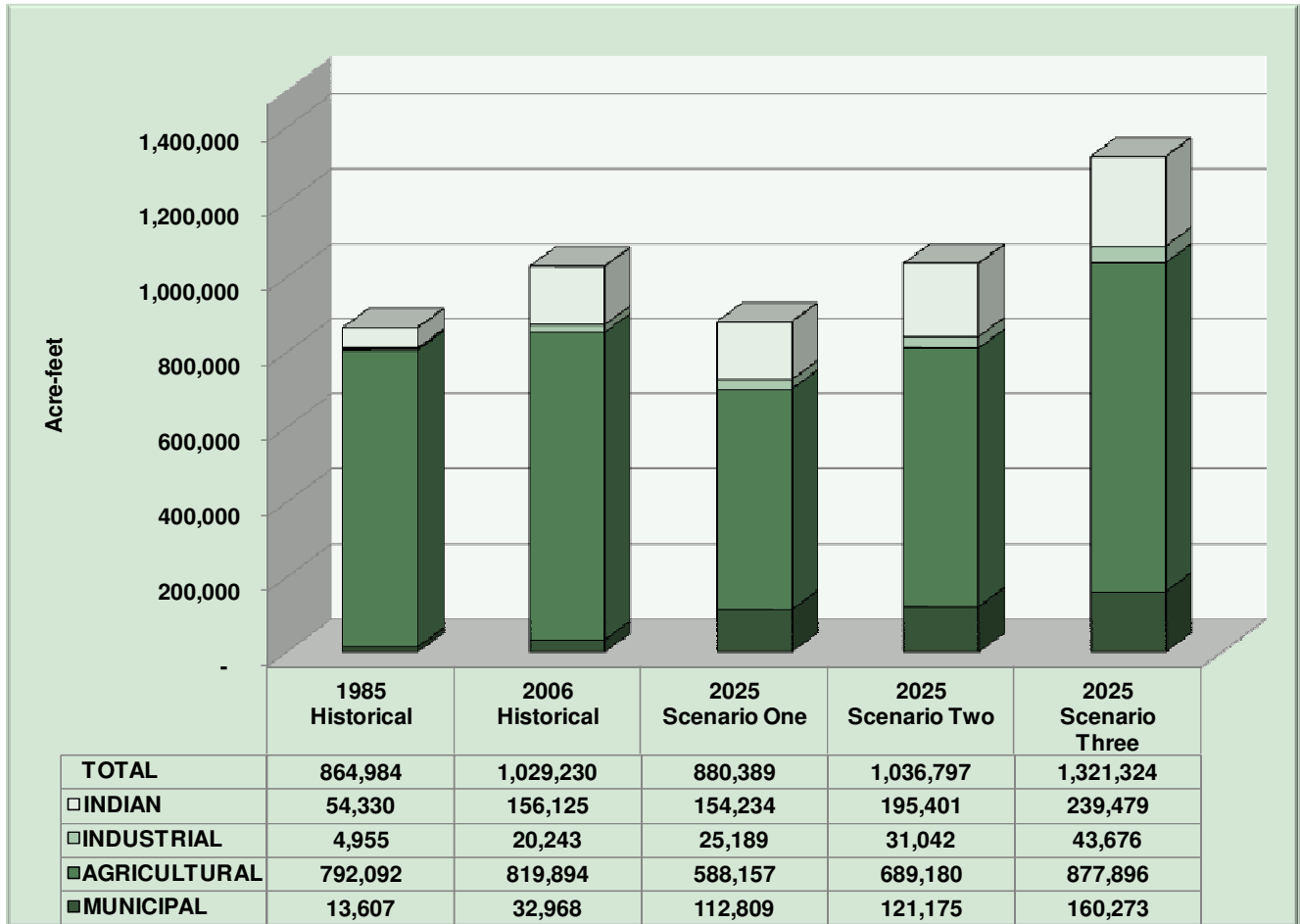
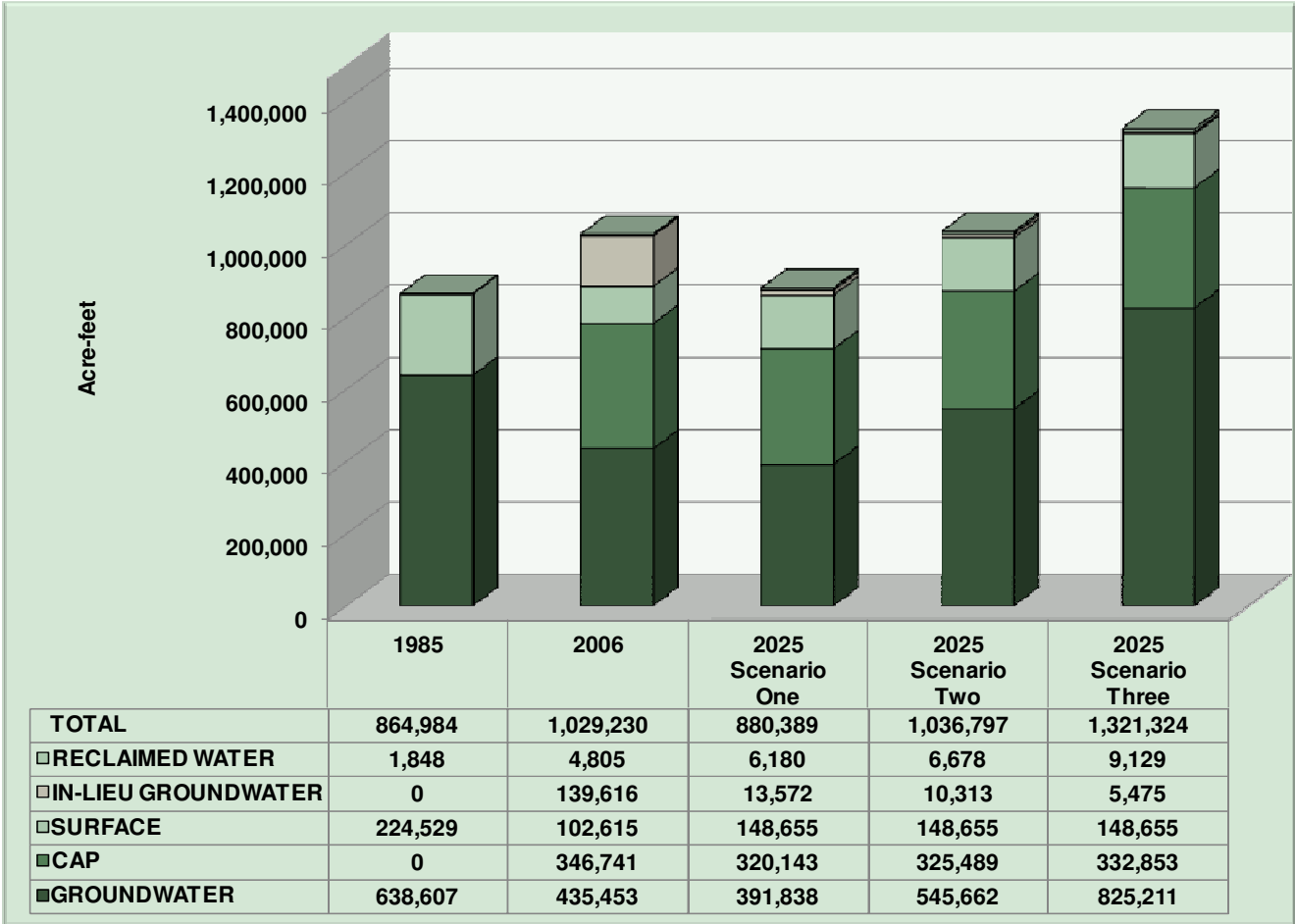


# PINAL AMA WATER USE SUMMARY

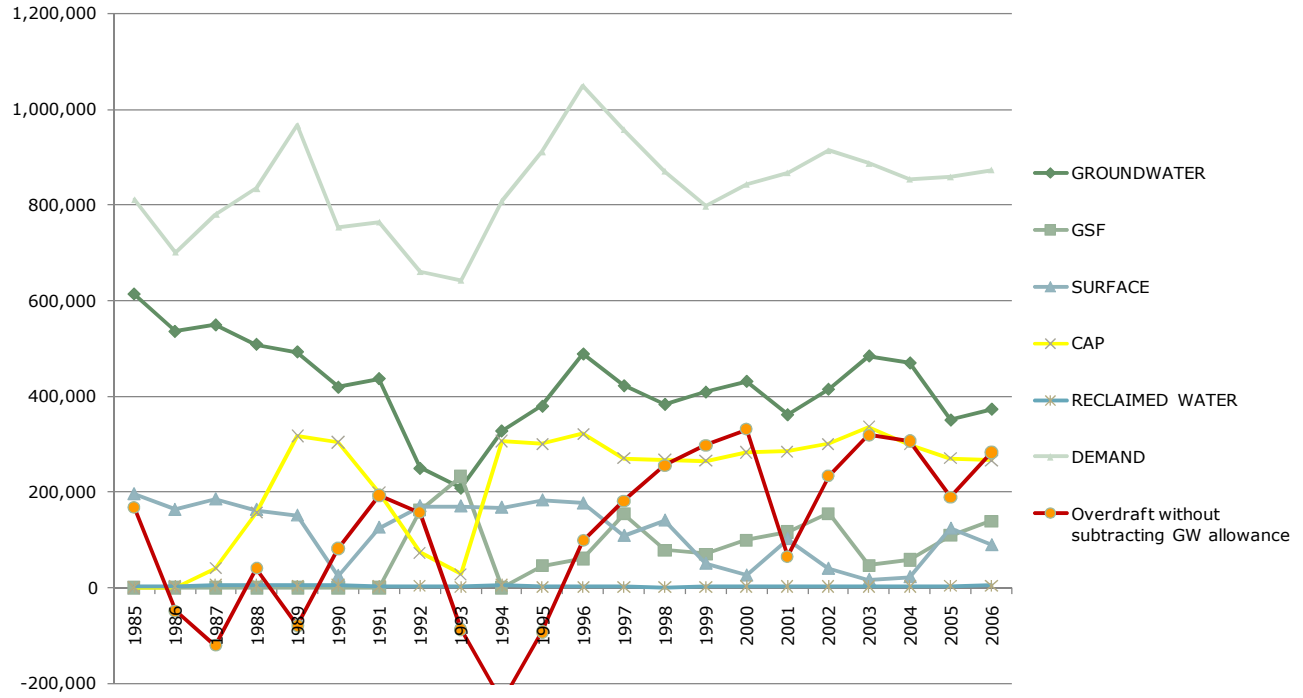
*Historical and 2025 Projected Demand by Sector  
Pinal Active Management Area*



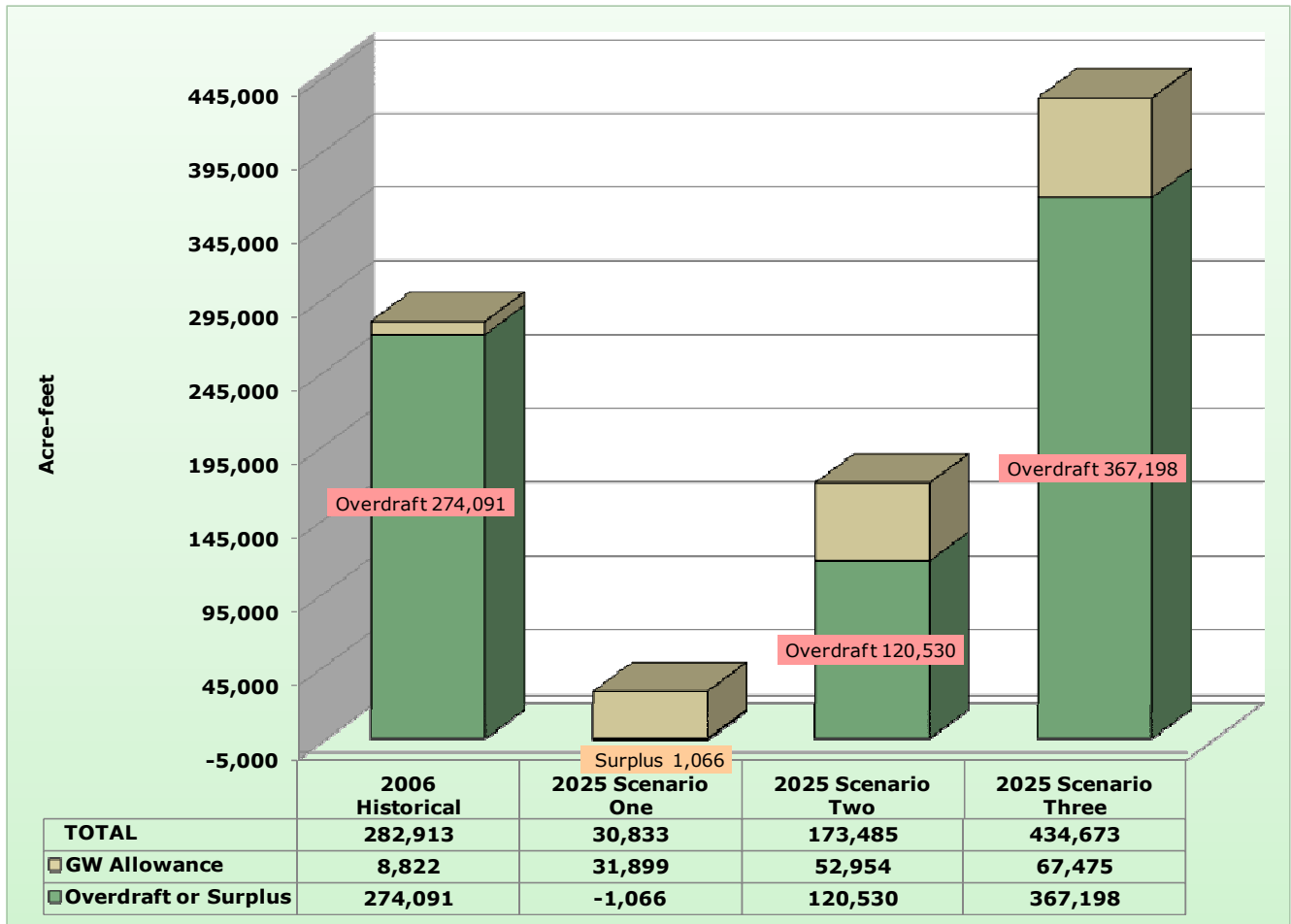
**Historical and 2025 Projected Supplies  
Pinal Active Management Area**



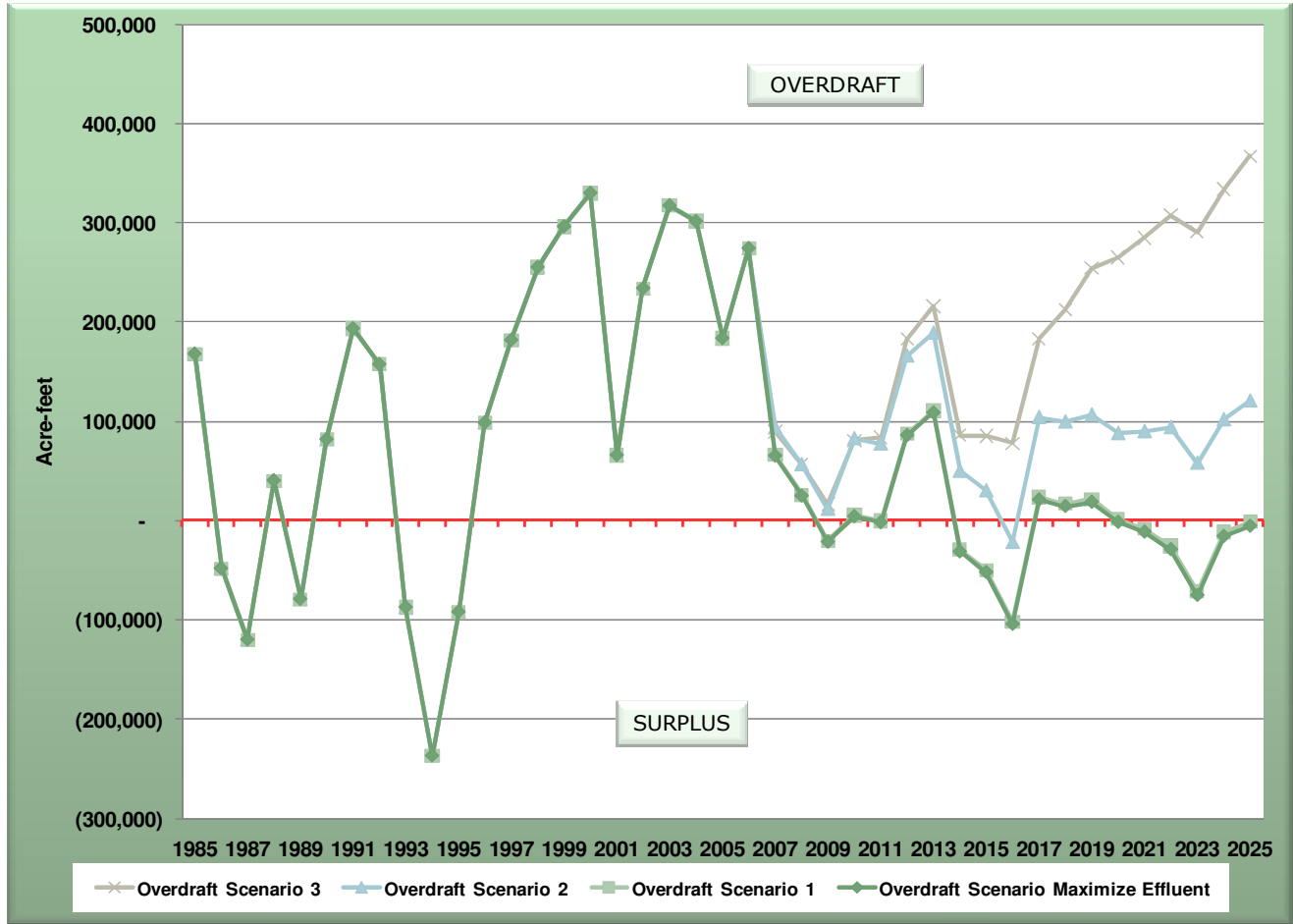
### Historic overdraft vs supply use and demand



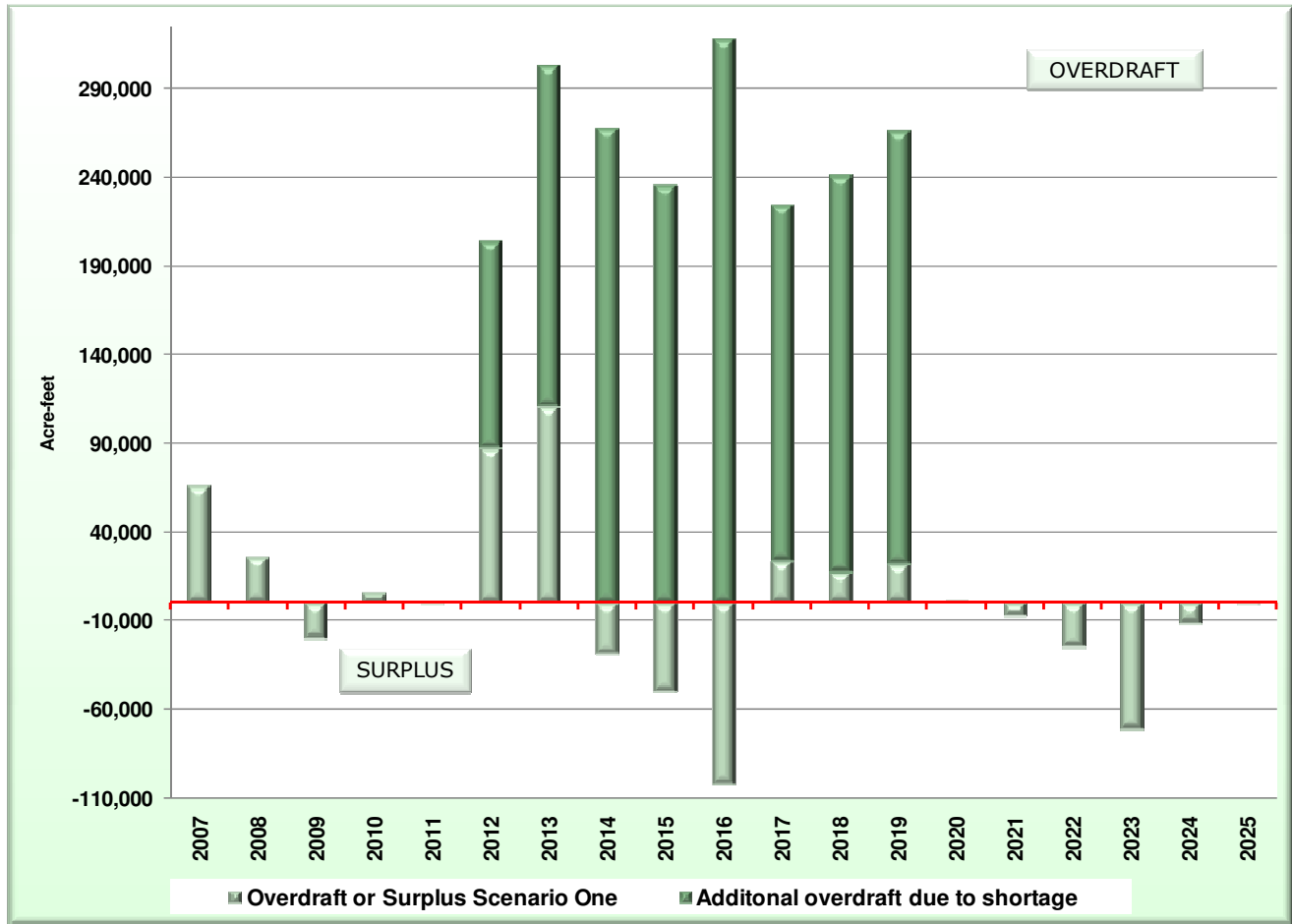
**2025 Projected Overdraft  
Pinal Active Management Area**



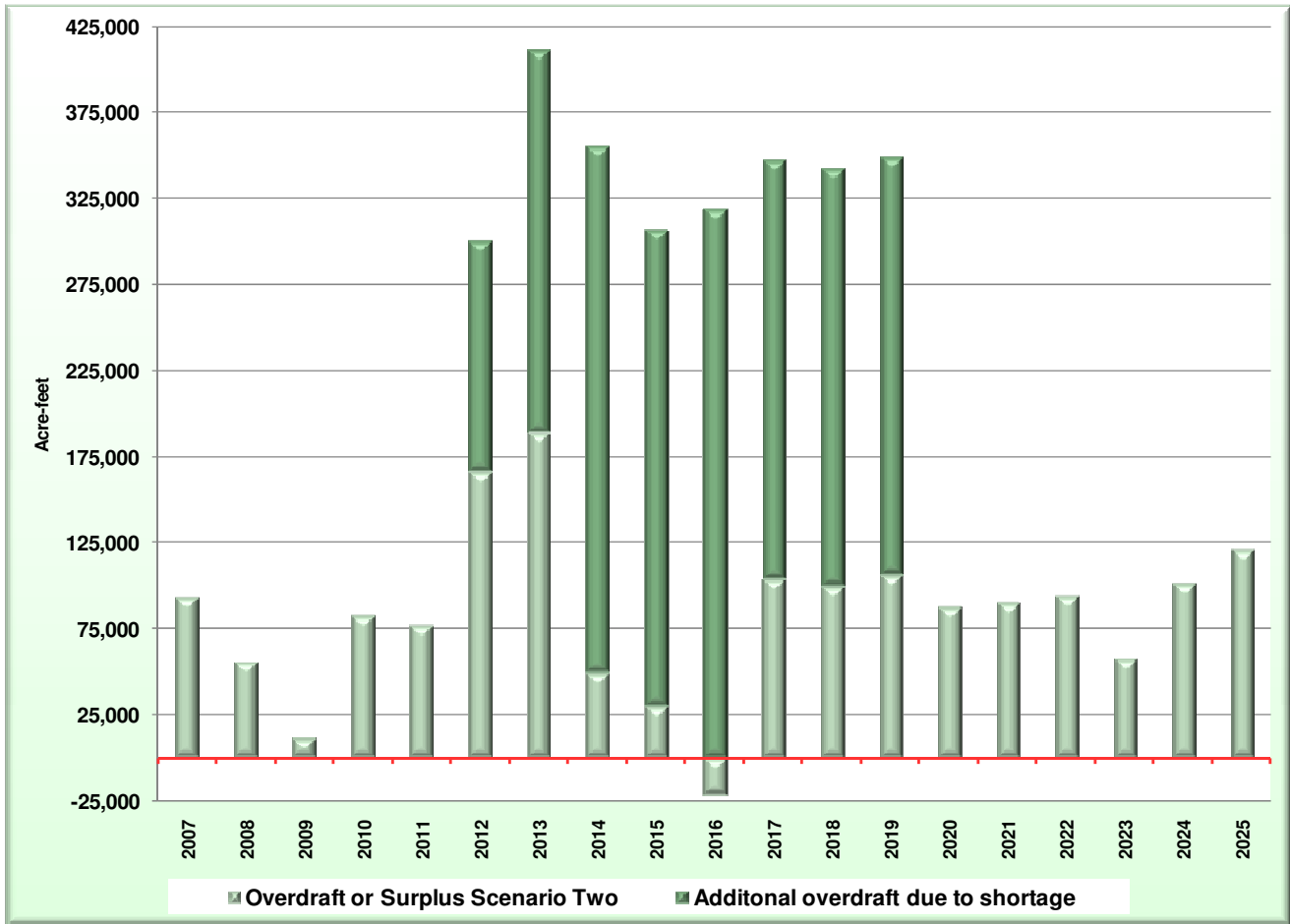
**Projected Overdraft - 2025  
Maximized Reclaimed Water Scenario vs. Baseline Projections  
Pinal Active Management Area**



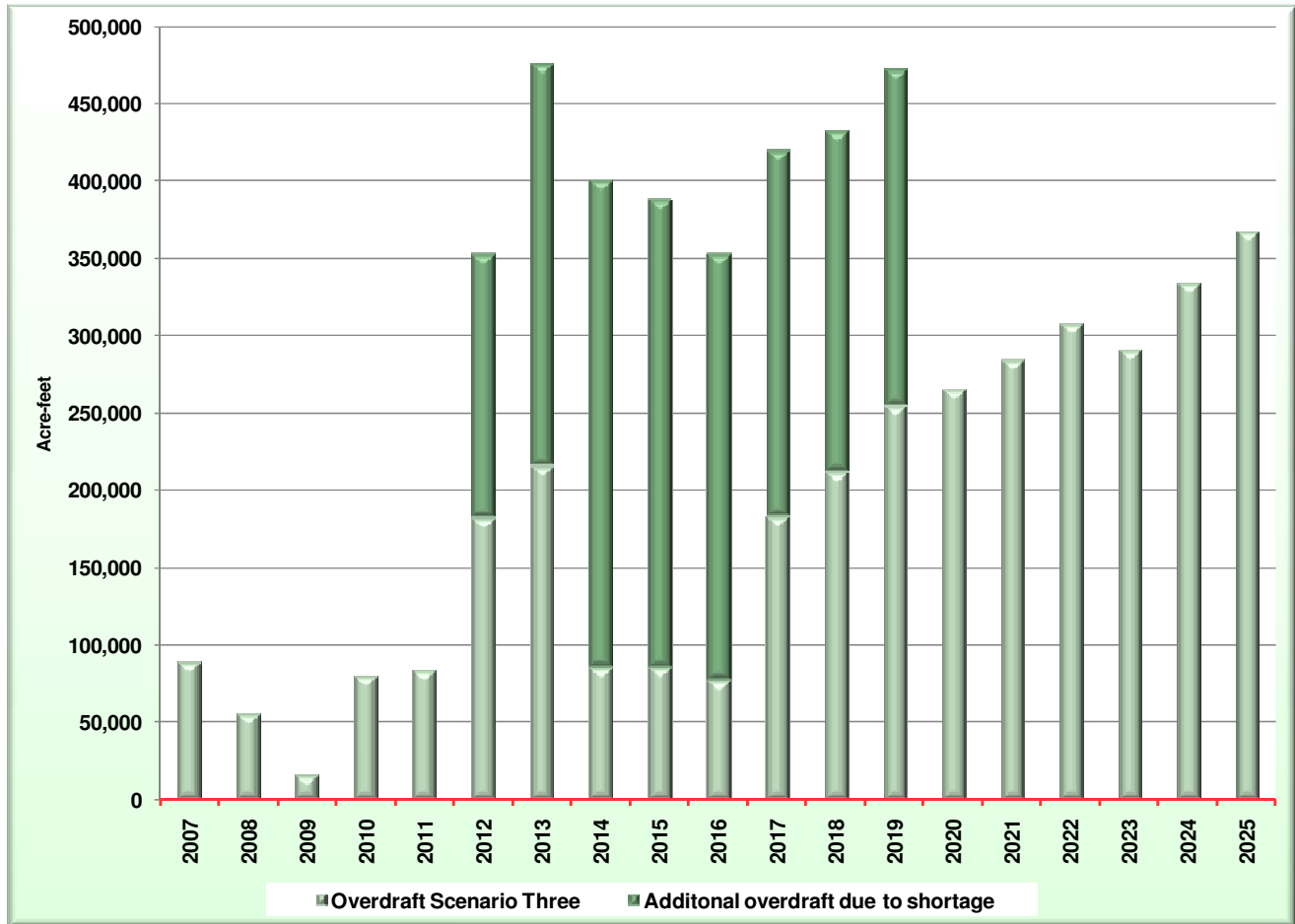
**Shortage Scenario One Projected Annual Overdraft  
With and Without CAP Shortage**



**Shortage Scenario Two Projected Annual Overdraft  
With and Without CAP Shortage**



**Shortage Scenario Three Projected Annual Overdraft  
With and Without CAP Shortage**



Slide Notes

- Numbers are from the May 13, 2011 version of the Pinal AMA Master Data Template; numbers are subject to revision.
- Uses by sector and by source include Municipal, Industrial, Agricultural and Indian uses. Use by source includes water recovered but not stored.
- LTS credits accrued do not include credits that have been used by the CAGR to meet its replenishment obligation and replenishment reserve.
- GSF use consists of CAP.
- For questions or comments, please contact the Annual Reports & Planning Section at [data\\_management@azwater.gov](mailto:data_management@azwater.gov) or by phone at 602-771-8585.